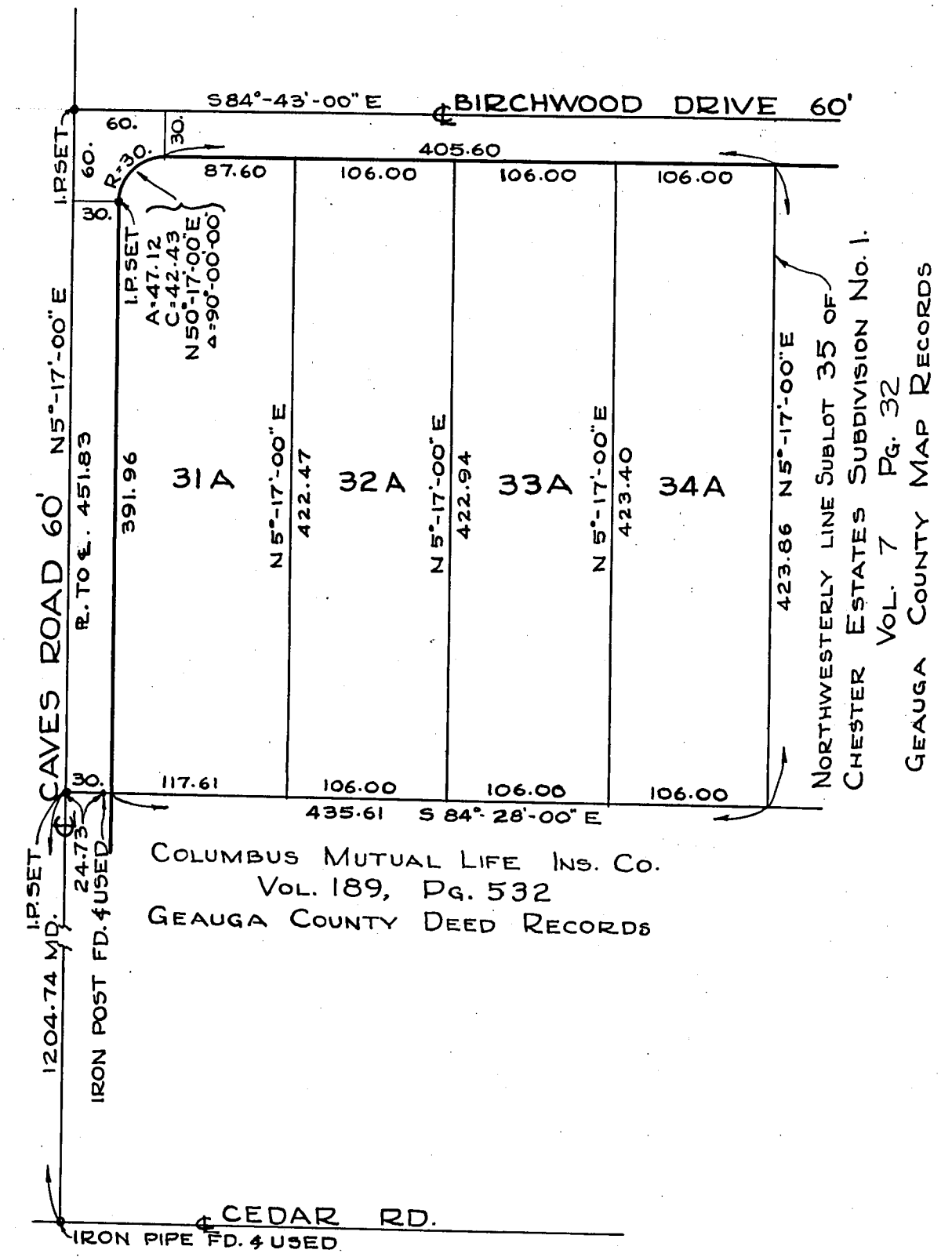


| | |
|-------------------|-----------|
| SUBLOT No. | AREA * 45 |
| 31 A | 1.1354 |
| 32 A | 1.0286 |
| 33 A | 1.0298 |
| 34 A | 1.0309 |
| TOTAL | = 4.2247 |
| * AREA IN ACRES ± | |



CHESTER ESTATES SUBDIVISION NO. 1A

BEING A RESUBDIVISION OF SUBLOTS 31, 32, 33, AND 34 OF THE CHESTER ESTATES SUBDIVISION NO. 1. AS RECORDED IN VOLUME 7, PAGE 32 OF GEauga COUNTY MAP RECORDS, AND BEING A PART OF ORIGINAL CHESTER TOWNSHIP LOTS 14 AND 24 IN TRACT 3 GEauga COUNTY, OHIO.

DIMENSIONS SHOWN ON THIS PLAT ARE EXPRESSED IN FEET AND DECIMAL PARTS THEREOF. PERMANENT MONUMENTS ARE FOUND OR SET AT ALL POINTS INDICATED HEREON. ALL OF WHICH WE CERTIFY TO BE CORRECT.

SCALE 1"=100'
MAY 1956

THE F.A. PEASE ENGINEERING CO.

By H.C. Gallimore
H.C. GALLIMORE
REG. SURVEYOR No. 131

ACCEPTANCE:

WE, THE UNDERSIGNED OWNERS OF LAND SHOWN ON THIS PLAT, HEREBY ACCEPT THIS PLAT AND SUBDIVISION OF THE SAME.

BY Marvin Helf PRES.
MARVIN HELF
BY Simon Zalben SECY
SIMON ZALBEN

COUNTY OF Cuyahoga }
STATE OF OHIO }
BEFORE ME, A NOTARY PUBLIC IN AND FOR SAID COUNTY AND STATE, PERSONALLY APPEARED THE ABOVE SIGNED GARY CONSTRUCTION INC. BY MARVIN HELF, PRESIDENT, AND SIMON ZALBEN, SECRETARY, WHO ACKNOWLEDGED THE SIGNING OF THE FOREGOING INSTRUMENT TO BE THEIR FREE ACT AND DEED PERSONALLY AND AS SUCH OFFICERS THE FREE AND CORPORATE ACT OF SAID CORPORATION.

IN WITNESS WHEREOF I HAVE HEREUNTO SET MY HAND AND OFFICIAL SEAL AT Cleveland, OHIO, THIS 15th DAY OF June 1956



Notary A. Diederich
NOTARY PUBLIC
Commission expires Aug. 30, 1957

APPROVALS:
PLAT APPROVED BY THE TRUSTEES OF CHESTER TOWNSHIP THIS 27th DAY OF JUNE 1956.

PLAT APPROVED BY THE ZONING BOARD OF CHESTER TOWNSHIP THIS 27th DAY OF JUNE 1956.

PLAT APPROVED BY THE BOARD OF COMMISSIONERS OF GEauga COUNTY THIS 9th DAY OF July 1956.

PLAT APPROVED BY THE COUNTY ENGINEER OF GEauga COUNTY THIS ___ DAY OF ___ 1956.

Received: July 9, 1956 at 11:45 A.M.
Recorded: July 16, 1956 Volume 7 Page 45
Transferred July 9-1956
Wilmad J. Kromb
N.D. Hollenbeck, Recorder
M.A.C., Deputy

CHECKED BY:
Clément E. Roth
John H. Watkins
7-45