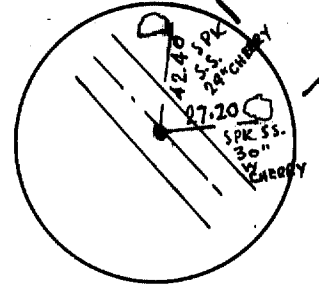
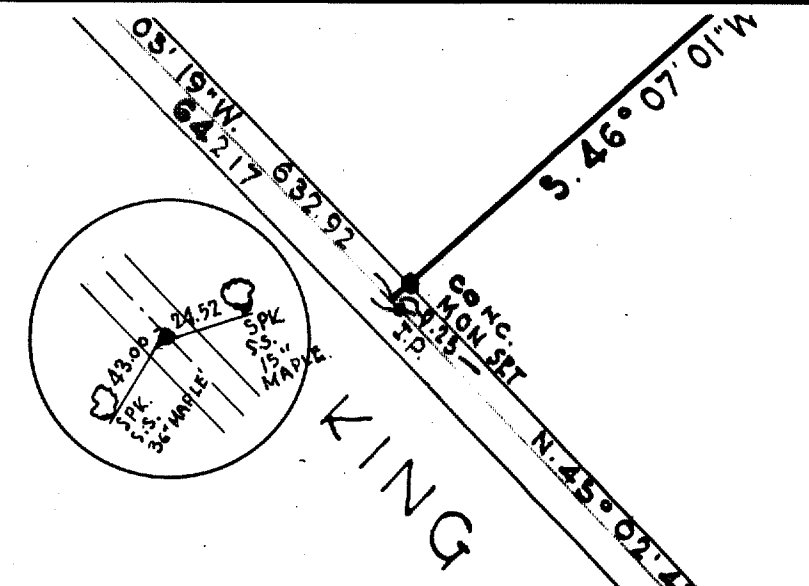
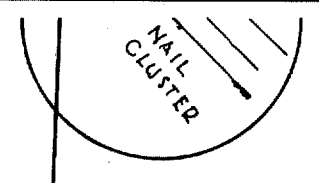


KIRTLAND HILLS VILLAGE

O.L. No 13 TRACT No 1  
KIRTLAND TWP  
LAKE COUNTY  
GEAUGA COUNTY  
CHARDON TWP.



LOUISE BALDWIN KING  
216.6350 AC.

TRACT 4

119  
121  
123  
125

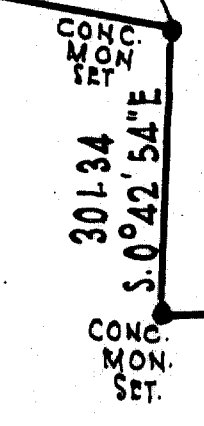
41.253 AC  
IN O.L. 1

96.000 AC  
IN O.L. 2

MEMORIAL HIGHWAY  
(MENTOR-CHARDON DD.)

20.4770 AC  
IN O.L. 1

S. 81° 40' 49\" E. 1889.30



N. 85° 16' 24\" E. 1555.62  
S. 84° 15' 16\" E. 130.26  
N. 84° 32' 29\" E. 584.79

MADY GASKELL KING  
99.4023 AC.  
50.4062 AC.  
IN O.L. 2

OL. 1 : OL. 2  
OL. 4 OL. 3

OL. 2  
OL. 3

# PARTITION SURVEY

OF A PART OF O.L. 1, 2, 3 & 4 IN TRACT 4 CONCORD TOWNSHIP LAKE COUNTY OHIO AND O.L. 1, 2, 3, 4, 5 & 6 IN TRACT 4 CHARDON TOWNSHIP GEAUGA COUNTY OHIO, ALSO A PART OF KIRTLAND TWP. LAKE COUNTY.

FOR

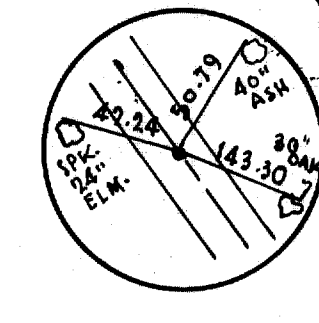
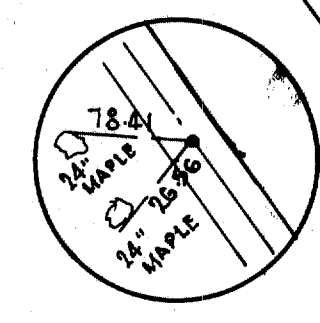
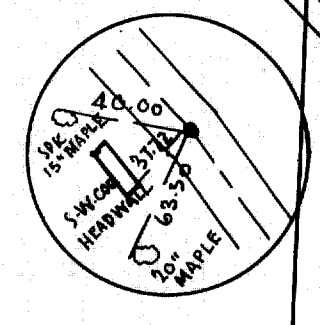
## MARY GASKELL KING LOUISE BALDWIN KING FRANCES KING SCHAFFER

BY

FRANK N. RILEY PROFESSIONAL ENGINEER & SURVEYOR  
WILLOUGHBY OHIO SCALE 1\" = 200 JULY 1, 1954  
REVISED SEPT. 10, 1954

CERTIFICATE OF TRANSFER  
ESTATE OF LAWRENCE HITCHCOCK  
VOL. 196 PG. 135  
OCT. 7, 1935  
PARCEL NO. 1

CHAS. G. KING  
VOL. 221 PG. 127  
JAN. 22, 1946



CERTIFICATION  
I hereby certify that I made the survey herein depicted and that the courses, distances, areas and other data are correct to the best of my knowledge. Monuments are placed as shown.

Frank N. Riley  
FRANK N. RILEY  
Reg. Sur. 3388

Received Oct. 5, 1954  
at 3:25 P.M.

Recorded Oct. 5, 1954 - Pages 119  
H.D. Hollenbeck Recorder  
#2480

OL 7 / OL 8  
OL 1 / OL 2

OL 8 OL 9

N

FRAN

62.033 Ac.  
IN OL 3

CHAS. R. MORLEY  
VOL. 53 PG. 27  
SEPT. 18, 1912  
PARCEL NO. 2

FRANCES KING  
SCHAFFER  
6.9349 AC.

TRACT 4

CHARLES D. MORLEY  
JUNE 30, 1914  
VOL. 58 PG. 158

OTMER O. & BLANCHE  
F. MOORE  
VOL. 205 PG. 116  
SEPT. 8, 1944

2.575 Ac.  
IN O.L. 1

18.633 Ac.  
IN O.L. 2

LITTLE

MOUNTAIN

ROAD

DEED TO LAKE COUNTY  
COMMISSIONERS DEC. 31, 1929.  
VOL. 117 PG. 389

FRANCES KING SCHAFFER  
35.8717 AC.

OL 1 : OL 2  
SECT. No 1

CHARDON TWP.  
GEAUGA COUNTY

SEC. No 1

LOUISE BALDWIN KING  
216.6350 AC.

TRACT 4

41.253 Ac.  
IN O.L. 1

96.000 AC  
IN O.L. 2

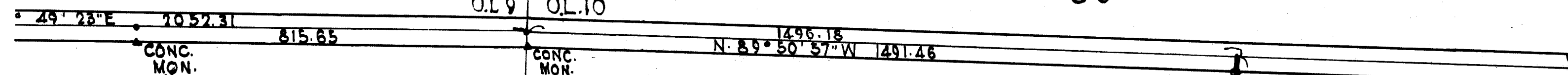
AND HILLS VILLAGE  
O.L. No 13 TRACT No 1  
EDTLAND TWP.  
LAKE COUNTY  
GEAUGA COUNTY  
CHARDON TWP.

KING MEM

PINECREST

ROAD

60°



FRANCES KING SCHAFER

120.2802 Ac.

62.033 Ac.  
IN O.L. 3

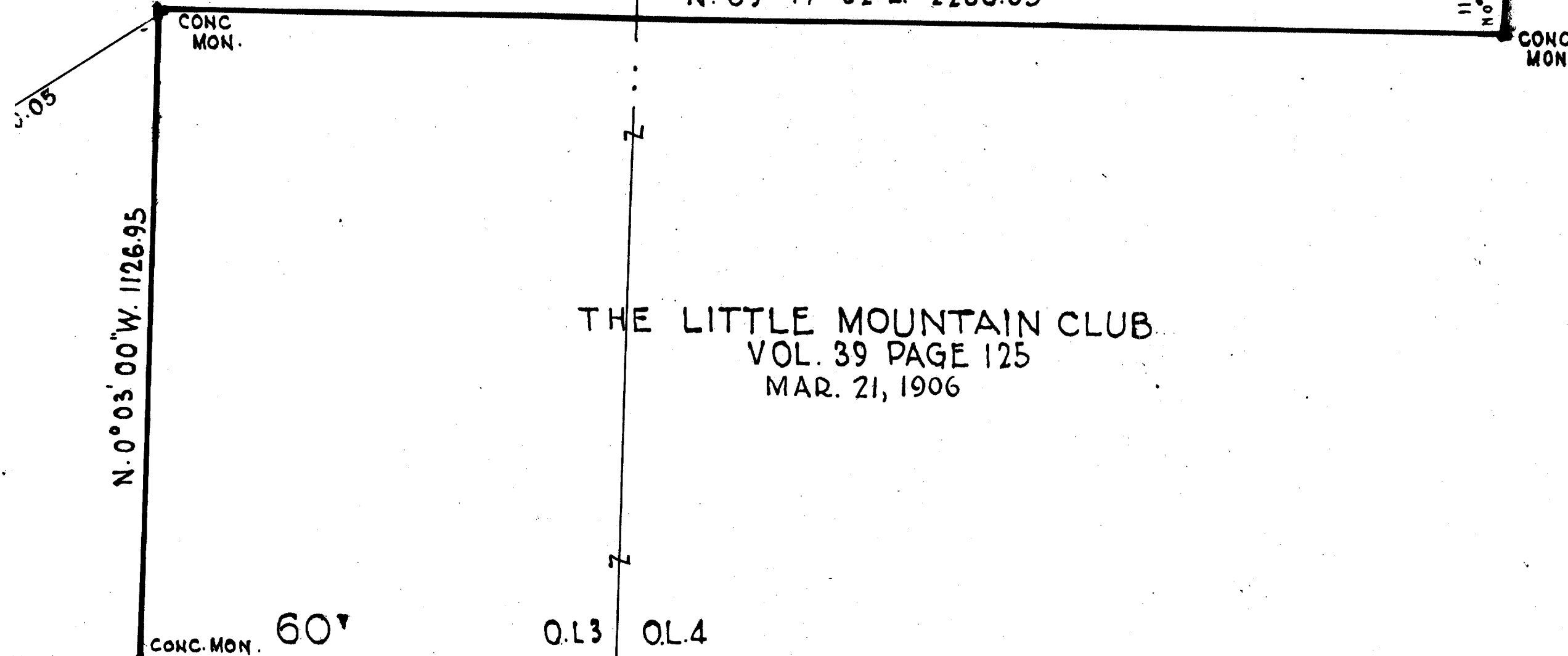
37.039 Ac.  
IN O.L. 4

GEORGE CRILE JR & JANE HALLE CRILE  
VOL. 197 PAGE 333  
JAN. 26, 1944

N. 89° 17' 02" E. 2266.05

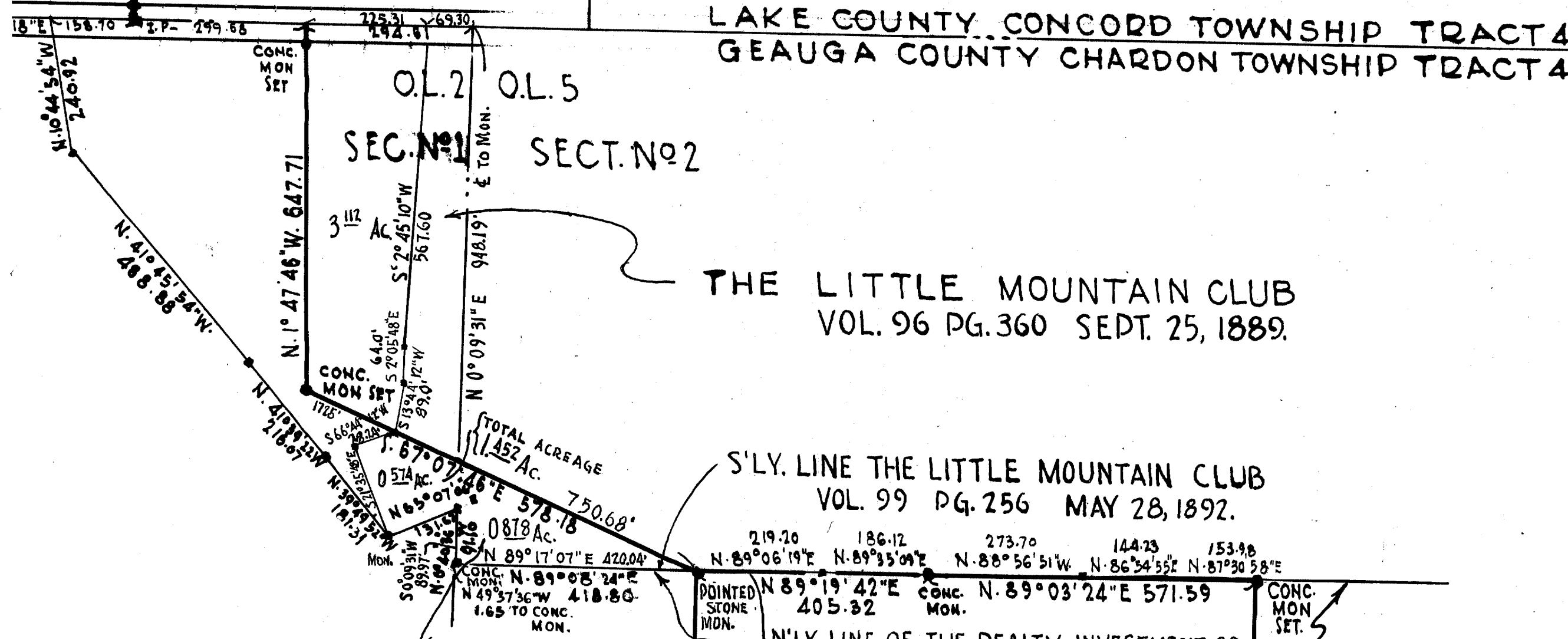
N. 1° 57' 30" E 1081.07  
N. 2° 18' 57" E. 607.85

I.P.P. 356.00  
N. 2° 32' 05" E.



THE LITTLE MOUNTAIN CLUB  
VOL. 39 PAGE 125  
MAR. 21, 1906

LAKE COUNTY CONCORD TOWNSHIP TRACT 4  
GEAUGA COUNTY CHARDON TOWNSHIP TRACT 4



SEC. No 1 SECT. No 2

THE LITTLE MOUNTAIN CLUB  
VOL. 96 PG. 360 SEPT. 25, 1889.

S'LY. LINE THE LITTLE MOUNTAIN CLUB  
VOL. 99 PG. 256 MAY 28, 1892.

LOUISE BALDWIN KING  
VOL. 260 PG. 139 & 140  
APR. 12, 1954

N'LY. LINE OF THE REALTY INVESTMENT CO.  
VOL. 184 PG. 224 MAR. 9, 1929.

FRANCES KING SCHAFER  
12.0452 Ac.

N'LY. LINE RALPH T. KING  
VOL. 131 PG. 324 OCT. 1, 1910

