

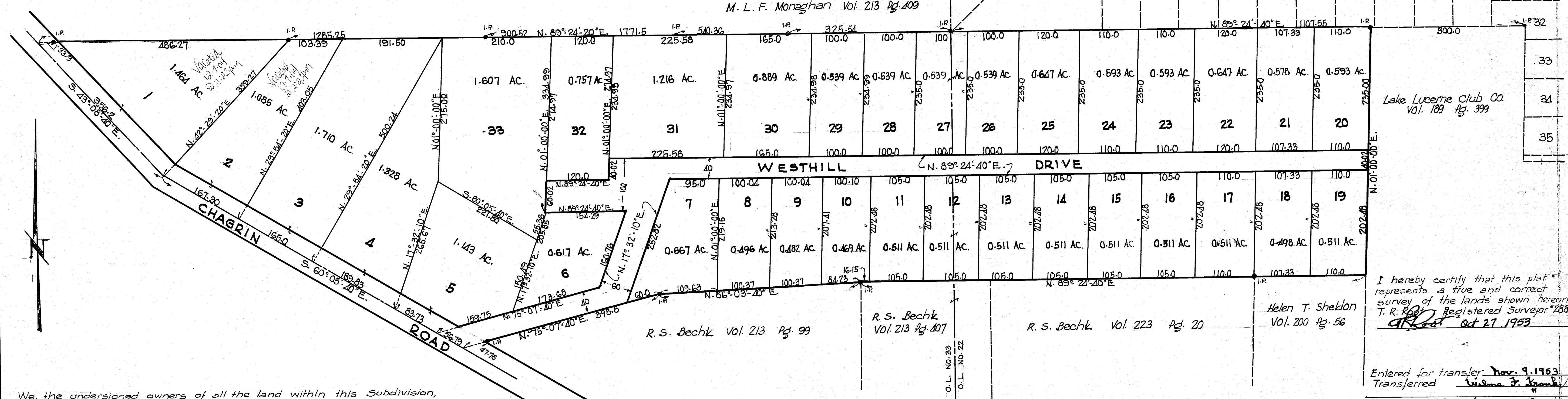
# PLAT OF LAKE LUCERNE SUBDIVISION NO. 4

- IN -  
 ORIG. LOTS NO. 22 AND NO. 33 OF TRACT NO. 1  
 BAINBRIDGE TOWNSHIP-GEAUGA COUNTY-OHIO

SCALE: 1 IN. = 100 FT.

15  
15A

31"



We, the undersigned owners of all the land within this Subdivision, hereby accept and adopt this plat of the same.  
 Signed at Chagrin Falls, Ohio this 27<sup>th</sup> day of October, 1953  
 The Lake Lucerne Land Company (Incorporated) (Deed Record Vol. 225, Pg. 534)  
 by T. M. Sheldon - President  
Helen T. Sheldon - Treas.  
 Helen T. Sheldon (Deed Record Vol. 200 Pg. 56)

State of Ohio ss. Before me, a Notary Public in and for said County of Cuyahoga County and State, personally appeared the above named T. M. Sheldon, President and Helen T. Sheldon, Treasurer who acknowledged that they did sign the foregoing acceptance, and that the same is the free act and deed of themselves and the Lake Lucerne Land Company. In testimony whereof I have hereunto set my hand and official seal at Chagrin Falls, Ohio this 27<sup>th</sup> day of October, 1953  
Kathleen P. Rocket  
 My Commission expires March 18, 1956

I hereby certify that the sub-lots shown on this plat are in compliance with the regulations established by zoning authority and in effect Oct. 27, 1953  
Ed Shelton  
 ZONING INSPECTOR

APPROVED by Geauga County Health Department

APPROVED by the Board of Commissioners of Geauga County  
John A. White Nov 9, 1953  
Alfred G. Riebel

THE ROADS SHOWN HEREON ARE NOT INTENDED FOR DEDICATION PURPOSES.

I hereby certify that this plat represents a true and correct survey of the lands shown hereon.  
 T. R. Root Registered Surveyor 2688  
Oct 27 1953

Entered for transfer Nov. 9, 1953  
 Transferred William F. James  
 Auditor of Geauga County

Received for Record Nov 9, 1953 10:00 AM  
 Recorded Nov 17, 1953 Vol. 6, Pg. 154-15A  
 Geauga County Plat Records.  
Ed Hollenbeck  
 Recorder of Geauga County

6-15  
15A

31"