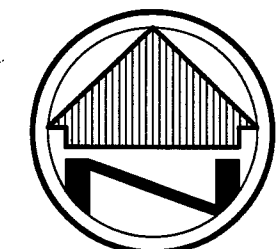


BONNER FARMS WV, L.L.C. & RJJ PROPERTIES, L.L.C. ANNEXATION PLAT
 BEING PART OF ORIGINAL MIDDLEFIELD TOWNSHIP LOTS 28 & 33
 COUNTY OF GEauga, STATE OF OHIO



SCALE: 1" = 200'

LEGEND

- P — PROPERTY LINE
- C — CENTER LINE
- R/W — RIGHT OF WAY
- — 5/8" IRON PIN FOUND
- — 1" IRON ROD IN MONUMENT BOX FOUND
- — CAPPED 5/8"x30" IRON ROD SET "COLLIER 7141"

BASIS OF BEARING: THE CENTERLINE BEARING OF MADISON ROAD (N 0°04'43" E), TAKEN FROM DEED VOLUME 1765, PG. 3086 IN THE GAUGA COUNTY RECORDS.

— AREA TO BE ANNEXED
 TOTAL AREA = 203.25 ACRES

ACREAGE BREAKDOWN OF AREA TO BE ANNEXED

PARCEL NO. 18-042600 = 188.250 ACRES
 PARCEL NO. 18-090666 = 15.000 ACRES
 TOTAL AREA TO BE ANNEXED = 203.250 ACRES

VILLAGE OF MIDDLEFIELD APPROVALS

Ben Larkid Mayor
 TITLE: Mayor

TITLE: *Walter J. ...*
 TITLE: Village Fiscal Officer

BOARD OF COUNTY COMMISSIONER'S RESOLUTION NUMBER 13-048

TRANSFERRED THIS 18th DAY OF June, 2013

Frank J. ...
 COUNTY AUDITOR

RECEIVED FOR RECORD THIS 8th DAY OF April, 2013
 AT 4:19 PM

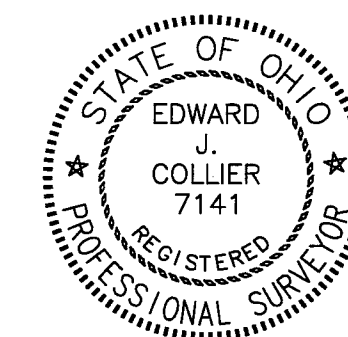
RECORDED THIS 8th DAY OF April, 2013
 IN Plat book 42 Page 2

Sharon C. ...
 COUNTY RECORDER

201400874323
 Filed for Record in
 GAUGA COUNTY OHIO
 SHARON C. SINGERICH, RECORDER
 04-08-2014 At 04:19 PM.
 PLAT 40.00
 OR Book 42 Page 2 - 2

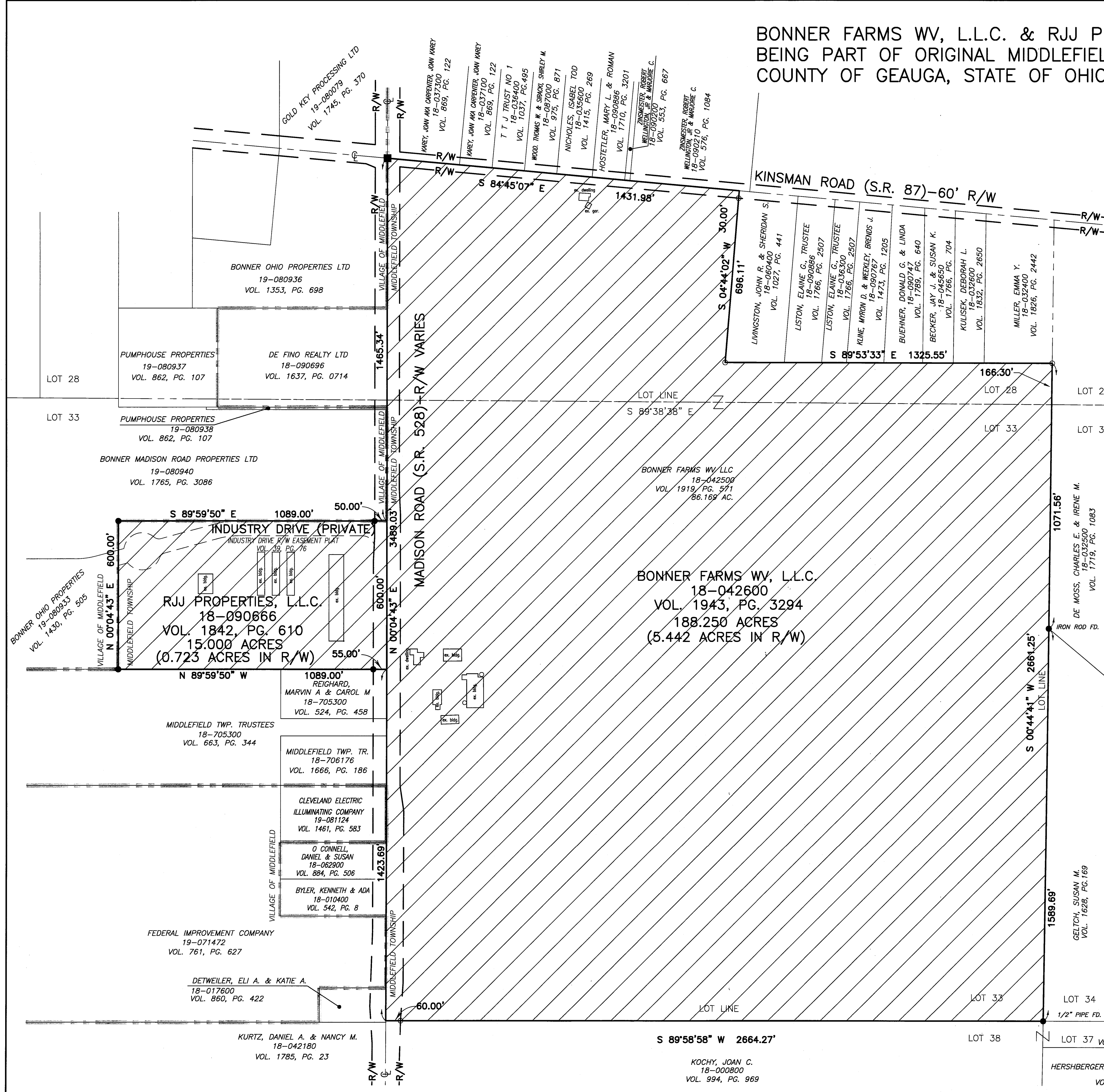
I DO HEREBY CERTIFY THAT I HAVE SURVEYED THE PREMISES AND PREPARED THE ATTACHED PLAT IN ACCORDANCE WITH THE PROVISIONS OF CHAPTER 4733-37 OF THE OHIO ADMINISTRATIVE CODE AND THE DIMENSIONS OF THE LOTS AND ROADS ARE IN FEET AND DECIMAL PARTS THEREOF, ALL OF WHICH ARE CORRECT TO THE BEST OF MY KNOWLEDGE AND BELIEF.

Edward J. Collier 2-20-13
 EDWARD J. COLLIER P.S.# 7141 DATE



| | | | |
|--------------|-----|-----------|----------|
| DRAWN | CBA | DATE | 02/13/13 |
| CHECKED | | JOB NO | |
| SCALE | | 1" = 200' | |
| SHEET 1 OF 1 | | | |

V.42 P.2



S 89°58'58" W 2664.27'

KOCHY, JOAN C.
 18-000800
 VOL. 994, PG. 969

HERSHBERGER, MATTHEW G. & ANNA MARIE
 18-090950
 VOL. 1435, PG. 594

GELTCH, SUSAN M.
 VOL. 1628, PG. 169

DE MOSS, CHARLES E. & IRENE M.
 18-032500
 VOL. 1719, PG. 1083

MILLER, EMMA Y.
 18-032400
 VOL. 1826, PG. 2442

BECKER, JAY J. & SUSAN K.
 18-045650
 VOL. 1766, PG. 704

BUEHNER, DONALD G. & LINDA
 18-047774
 VOL. 1789, PG. 640

KLINE, MYRON D. & WEELEY, BRENDA J.
 18-047267
 VOL. 1473, PG. 1205

LISTON, ELAINE G., TRUSTEE
 18-090886
 VOL. 1766, PG. 2507

LIVINGSTON, JOHN R. & SHERIDAN S.
 18-060440
 VOL. 1027, PG. 441

HUSTETLER, MARY L. & ROMAN
 18-090886
 VOL. 1710, PG. 3201

NICHOLAS, ISABEL TOD
 18-035800
 VOL. 1415, PG. 269

WOOD, THOMAS W. & SHANK, SHIRLEY M.
 18-087000
 VOL. 975, PG. 871

T T J TRUST, NO 1
 18-036400
 VOL. 1037, PG. 485

KAREY, JOHN ANA CARPENTER, JOHN KAREY
 18-037100
 VOL. 889, PG. 122

GOLD KEY PROCESSING LTD
 19-080079
 VOL. 1745, PG. 370

BONNER OHIO PROPERTIES LTD
 19-080936
 VOL. 1353, PG. 698

PUMPHOUSE PROPERTIES
 19-080937
 VOL. 862, PG. 107

DE FINO REALTY LTD
 18-090696
 VOL. 1637, PG. 0714

PUMPHOUSE PROPERTIES
 19-080938
 VOL. 862, PG. 107

BONNER MADISON ROAD PROPERTIES LTD
 19-080940
 VOL. 1765, PG. 3086

BONNER FARMS WV, L.L.C.
 18-042600
 VOL. 1943, PG. 3294
 188.250 ACRES
 (5.442 ACRES IN R/W)

RJJ PROPERTIES, L.L.C.
 18-090866
 VOL. 1842, PG. 610
 15.000 ACRES
 (0.723 ACRES IN R/W)

REICHARD, MARVIN A & CAROL M
 18-705300
 VOL. 524, PG. 458

MIDDLEFIELD TWP. TRUSTEES
 18-705300
 VOL. 663, PG. 344

MIDDLEFIELD TWP. TR.
 18-706176
 VOL. 1666, PG. 186

CLEVELAND ELECTRIC ILLUMINATING COMPANY
 19-081124
 VOL. 1461, PG. 583

O CONNELL, DANIEL & SUSAN
 18-062900
 VOL. 884, PG. 506

BYLER, KENNETH & ADA
 18-010400
 VOL. 542, PG. 8

FEDERAL IMPROVEMENT COMPANY
 19-071472
 VOL. 761, PG. 627

DETWEILER, ELI A. & KATIE A.
 18-017600
 VOL. 860, PG. 422

KURTZ, DANIEL A. & NANCY M.
 18-042180
 VOL. 1785, PG. 23