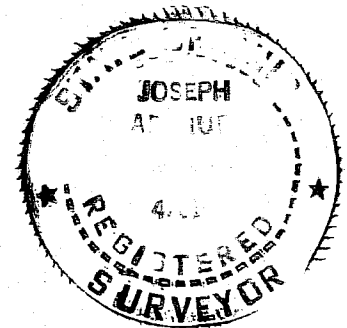


MAP OF A LOT SPLIT AND CONSOLIDATION
 BOARD OF EDUCATION OF THE
 CHARDON LOCAL SCHOOL DISTRICT
 BEING PART OF ORIGINAL CHARDON TOWNSHIP LOT NOS. 127 & 128, TRACT 16.3
 AND PART OF ORIGINAL CHARDON VILLAGE LOT NO. 132
 CITY OF CHARDON - GEauga COUNTY - OHIO

I certify this survey is in accordance with
 the provisions of Chapter 4733-27 of the
 Ohio Administrative Code.

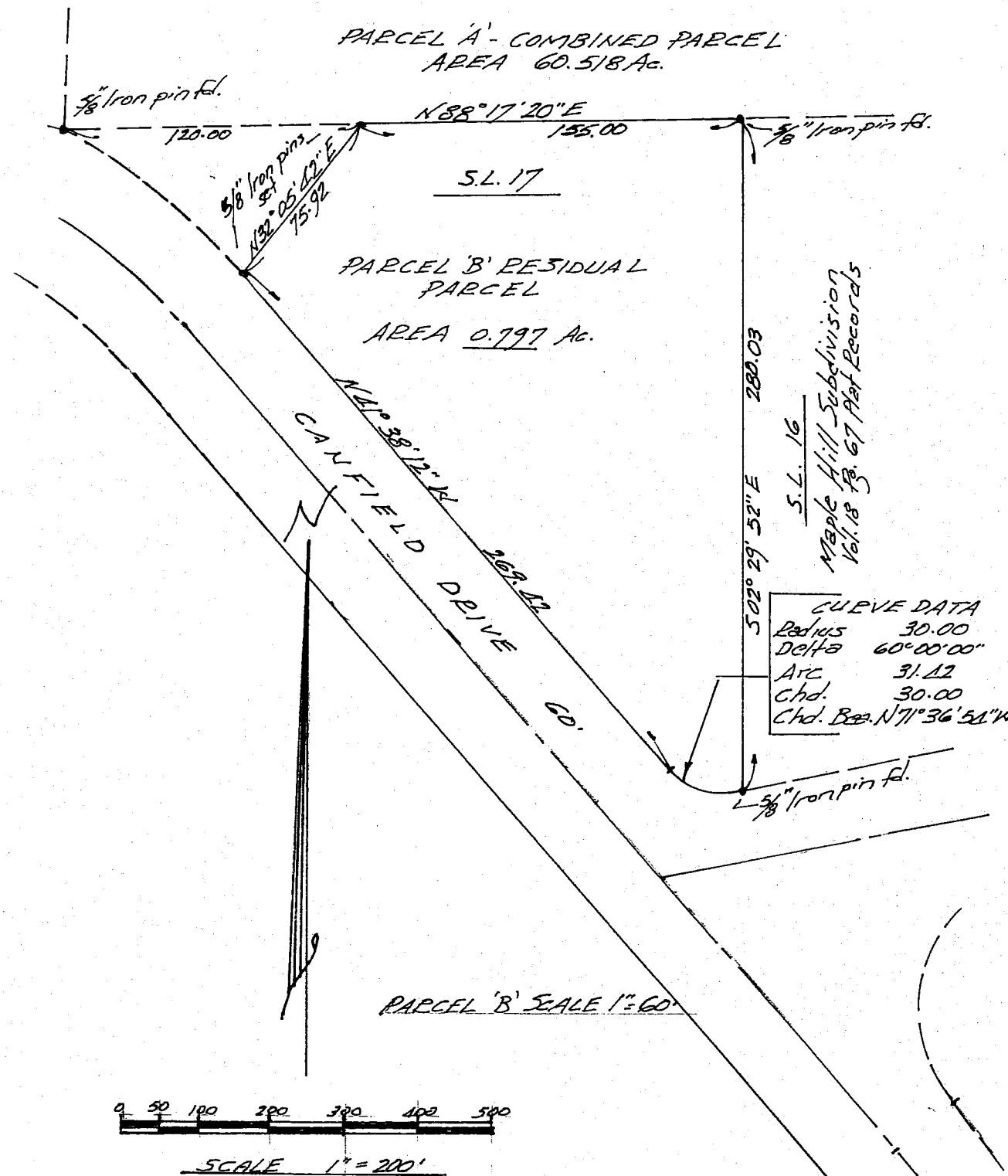
J. Arthur Temple
 J. Arthur Temple P.S. No. 2761
 October 2010



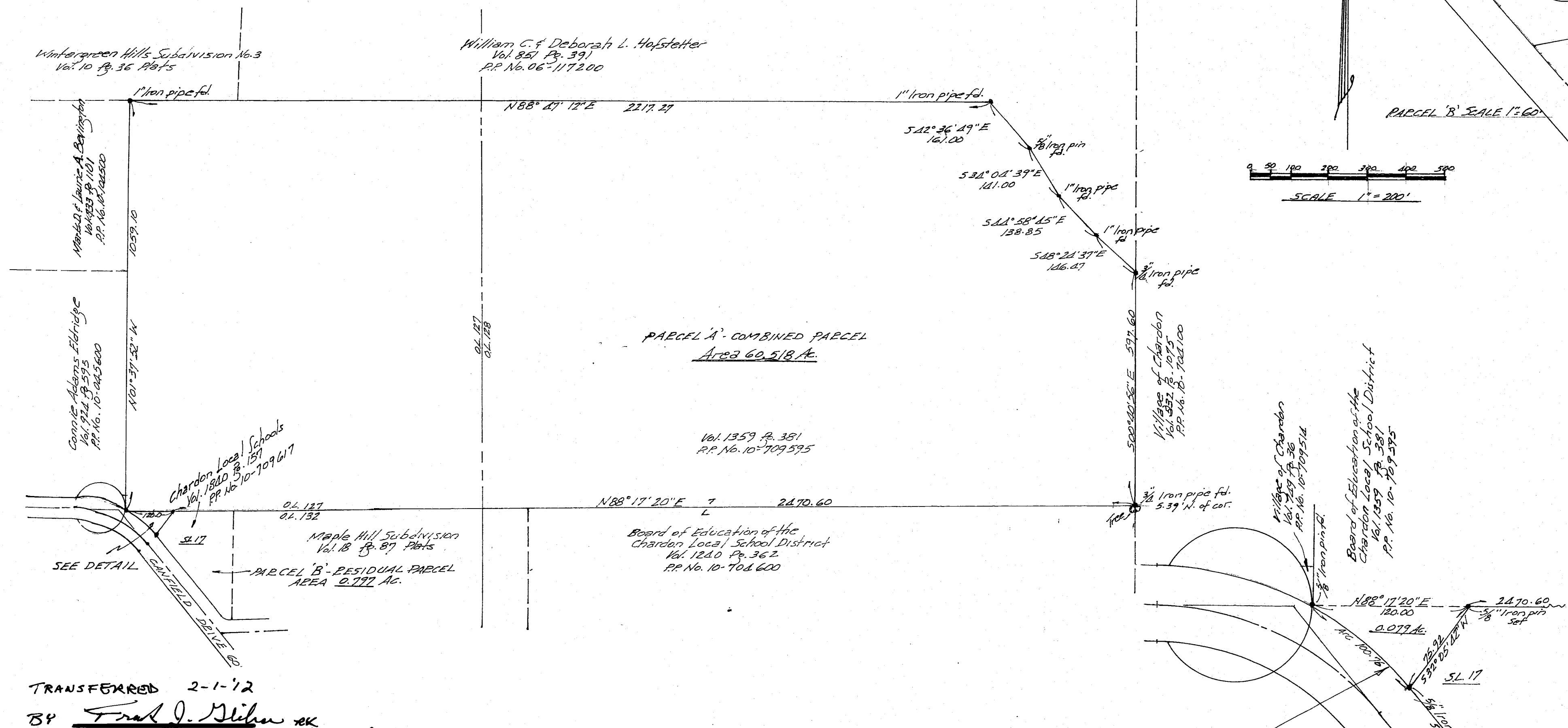
APPROVED
 THE C. W. COURTNEY OF
 ENGINEERS FOR THE CITY OF CHARDON
 2/16/12

APPROVED BY
 CITY OF CHARDON
 PLANNING COMMISSION

Date: 2/15/12
 Signed: *[Signature]*



CURVE DATA
 Radius 30.00
 Delta 60.0000
 Arc 31.42
 Chord 30.00
 Chord Bear. N71°30'28"W



TRANSFERRED 2-1-12
 BY *Frank J. Gilma*
 FRANK J. GILMA - COUNTY AUDITOR

NOTE: Bearings shown hereon are based
 on an assumed meridian and are used only
 to determine angles.
 Pins set consists of 30"x36" iron re-bar with
 orange caps.

CURVE DATA
 Radius 260.00
 Delta 22°12'15"
 Arc 100.76
 Chord 100.13
 Chord Bear. N52°39'20"W

DETAIL
 Scale 1" = 60'

201200836429
 Filed for Record in
 GAUGA COUNTY OHIO
 SHARON C GINGERICH RECORDER
 02-01-2012 At 01:34 PM.
 PLAT 40.00
 OR Book 41 Page 64 - 64

Recorded this 1st day of February, 2012 at 1:34 PM in
 Plat book Volume 41 Page 64.
Sharon C. Gingerich
 Sharon C. Gingerich - Recorder

V.41 P.64