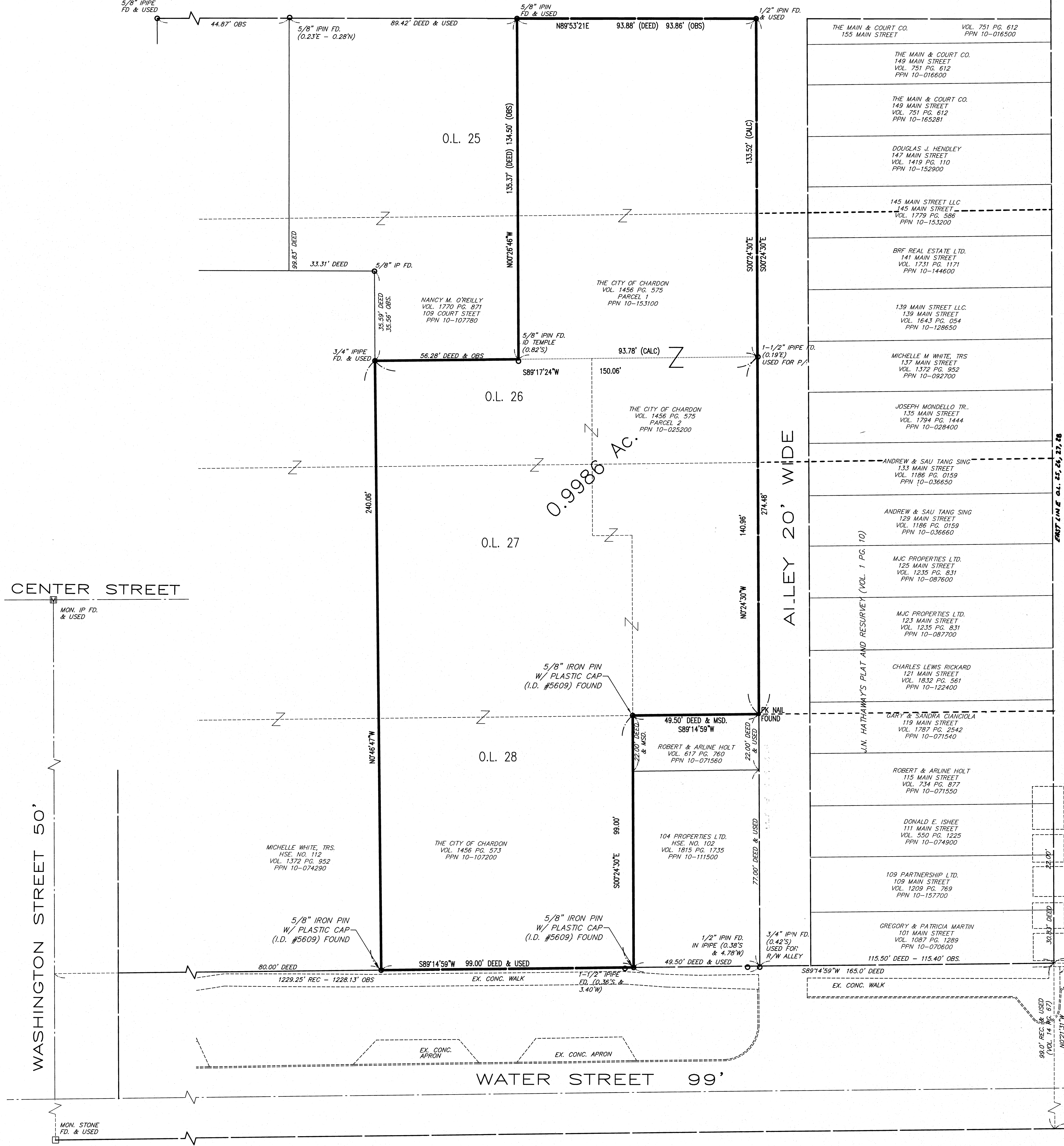


COURT STREET 35'



ACCEPTANCE

WE, THE UNDERSIGNED OWNERS OF THE LAND SHOWN HEREON, DO HEREBY ACCEPT THIS CONSOLIDATION PLAT AND MAP OF THE SAME.

THE CITY OF CHARDON
an Ohio incorporated municipality

By: David A. Lelko
David A. Lelko, City Manager

COUNTY OF CUYAHOGA }
STATE OF OHIO } S.S.

BEFORE ME A NOTARY PUBLIC IN AND FOR SAID COUNTY AND STATE, PERSONALLY APPEARED DAVID A. LELKO, CITY MANAGER OF THE CITY OF CHARDON, AN OHIO INCORPORATED MUNICIPALITY, WHO ACKNOWLEDGED THAT HE DID SIGN THE FOREGOING INSTRUMENT ON BEHALF OF SAID MUNICIPALITY AND BY AUTHORITY OF ITS CHARTER AND THAT SAID INSTRUMENT IS HIS FREE ACT AND DEED INDIVIDUALLY AND AS SUCH OFFICER AND THE FREE ACT AND DEED OF SAID MUNICIPALITY.

IN TESTIMONY WHEREOF I HAVE HEREUNTO SET MY HAND AND OFFICIAL SEAL AT Chardon, OHIO
THIS 26 DAY OF June, 2008.

Patricia E. Kucinski
NOTARY PUBLIC

MY COMMISSION EXPIRES: 9/15/2012

APPROVAL

THIS PLAT OF CONSOLIDATION HAS BEEN APPROVED BY THE PLANNING COMMISSION OF THE MUNICIPALITY OF CHARDON, OHIO, BY RESOLUTION 20.

CHAIRMAN

SECRETARY

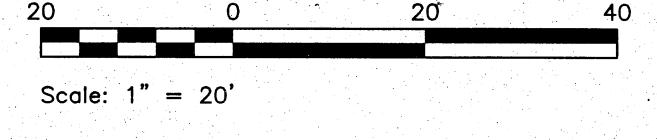
PLAT ISSUED AT THE INSTANCE OF:
THE CITY OF CHARDON

TRANSERRIO 4-9-09
Frank J. Slikmak
AUDITOR

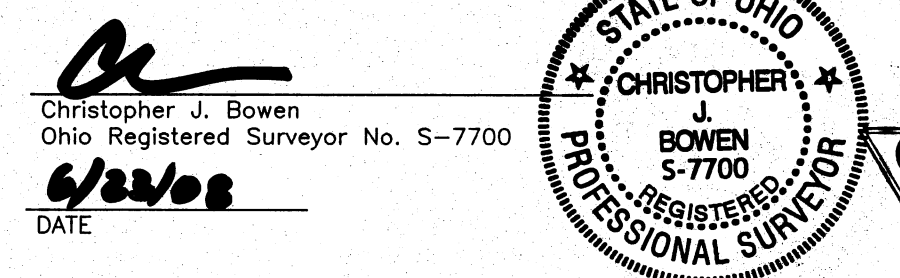
CONSOLIDATION PLAT

FOR
CITY OF CHARDON

SITUATED IN THE CITY OF CHARDON, COUNTY OF GEauga AND STATE OF OHIO, AND KNOWN AS BEING PART OF TOWN PLAT LOTS NOS. 25, 26, 27 AND 28 AS SHOWN BY THE PLAT RECORDED IN VOLUME 26 PAGE 216 OF GEauga COUNTY DEED RECORDS.



MONUMENTS WERE FOUND OR SET AS INDICATED HEREON. DIMENSIONS ARE EXPRESSED IN FEET AND DECIMAL PARTS THEREOF, ALL OF WHICH I CERTIFY TO BE CORRECT. BEARINGS SHOWN HEREON ARE TO AN ASSUMED MERIDIAN AND INDICATE ANGLES ONLY.



- REFERENCES:
- 1) GEauga COUNTY TAX MAPS
 - 2) GEauga COUNTY DEED RECORDS
 - 3) SURVEY PLAT FOR PUBLIC SQUARE (VOL. 14 PG. 67)
 - 4) CENTERLINE PLAT OF CHERRY AVENUE (VOL. 10 PG. 29)
 - 5) MAP OF TOWN SQUARE (VOL. 26 PG. 216)
 - 6) L. N. HATHAWAY'S RESURVEY PLAT (VOL. 1 PG. 10)

Symbol	Legend	Abbrev.
Monument	Found	MON Found
5/8" IPIN w/ plastic cap (I.D. #5609)	Found	OBS Observed
Stone	Found	ACT Actual
Railroad Spike	(RR)	REC Record
		MSD Measured
		CALC Calculated
		IPIN Iron Pin
		PPN Permanent Parcel No.
		RAU Record & Used
		CH Chain Hole
		RR Railroad Spike
		PK Parker-Kalon Masonry Nail

Received for record this
9th day of April 2009 at
4:08pm and recorded
in Volume 40 Page 120
of the Geauga County
Records of Plats.
Sharon C. Gengerich
Sharon C. Gengerich
Recorder

200900792818
Filed for Record in
GEauga COUNTY OHIO
SHARON C. GINGERICH
04-09-2009 At 04:08 pm.
40.00
PLAT
OR Book: 40 Page 120 - 120

THE C.W. COURTNEY COMPANY
Civil & Consulting Engineers
Land Surveyors
700 Beta Drive, Suite 200
Cleveland, Ohio 44143-2384
[phone] 440.449.4005 [fax] 440.449.0883
www.cwcourtney.com
Job No. 6-91

SOUTH STREET (SR 44) 132'

V.40 P.120