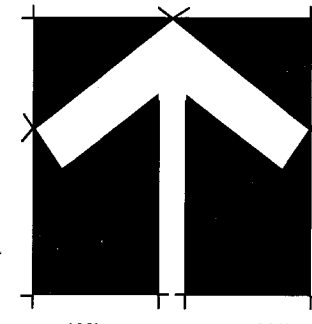


M. CLASSEN  
DEED VOL. 1802, PG. 471  
PARCEL NO. 02-487100



BASIS OF BEARINGS:  
Southernly line of the Laurel Springs at Bainbrook  
Subdivision N. 89°-30'-20" E.

- DENOTES 3/4" IRON PIN SET
- ▣ DENOTES BOXLESS PAVEMENT MONUMENT
- 12' UTILITY EASEMENT

5/8" IRON PIN  
FD. AT 49.64'  
& USED FOR LINE

5/8" IRON PIN  
FD. AT 49.64'  
20.00' R. 18.54' Dia.

1/2" IRON PIN  
FD. AT 21.86'

1/2" IRON PIN  
FD. AT 30.75'

HIGHPOINT  
ROAD 60'

1/2" IRON PIN  
FD. & USED

1/2" IRON PIN  
FD. & USED

PETTIBONE ROAD 60'

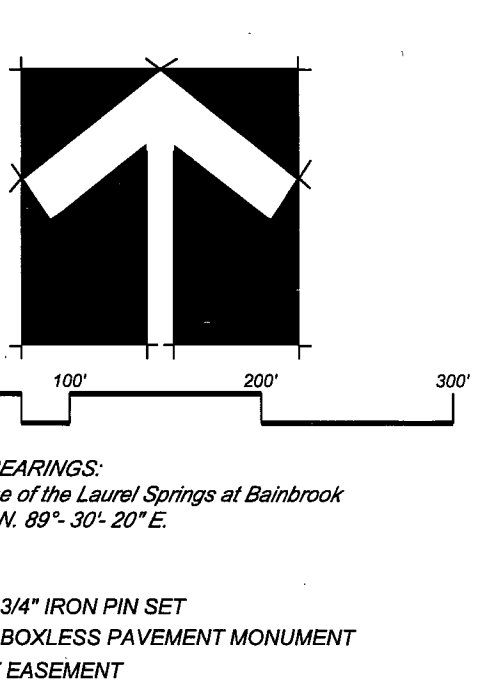
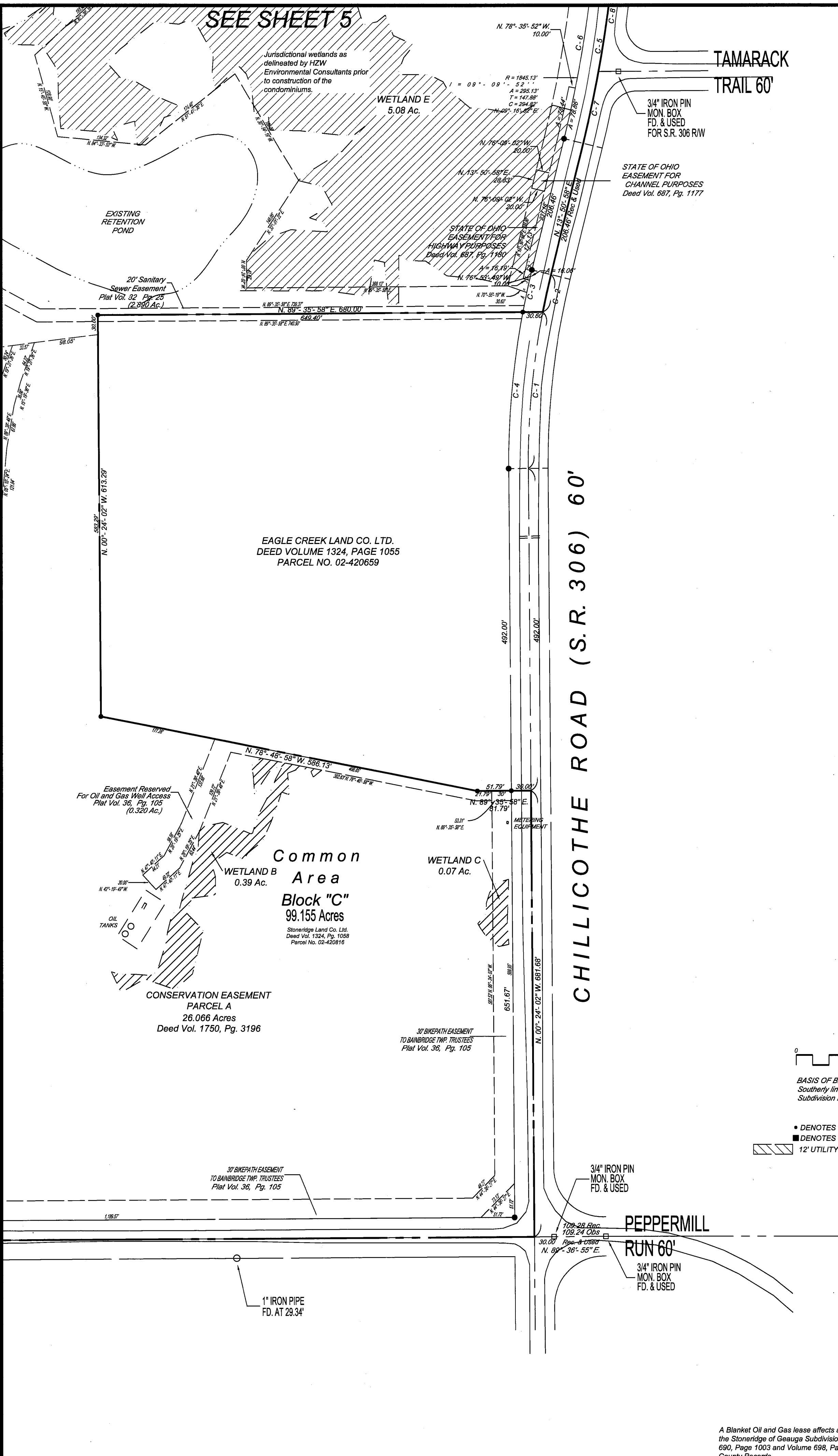
WESTERN RESERVE  
TELEPHONE CO.  
R.O.W. EASEMENT  
Deed Vol. 967, Pg. 416

A Blanket Oil and Gas lease affects all of the land encompassing  
the Stonewall of Geauga Subdivision, as recorded in Volume  
690, Page 1003 and Volume 698, Page 1151 of the Geauga  
County Records.

V.40 P.116 SHEET 2 OF 5

SEE SHEET 2

SEE SHEET 5



BASIS OF BEARINGS:  
Southern line of the Laurel Springs at Bainbrook  
Subdivision N. 89° 30' 20" E

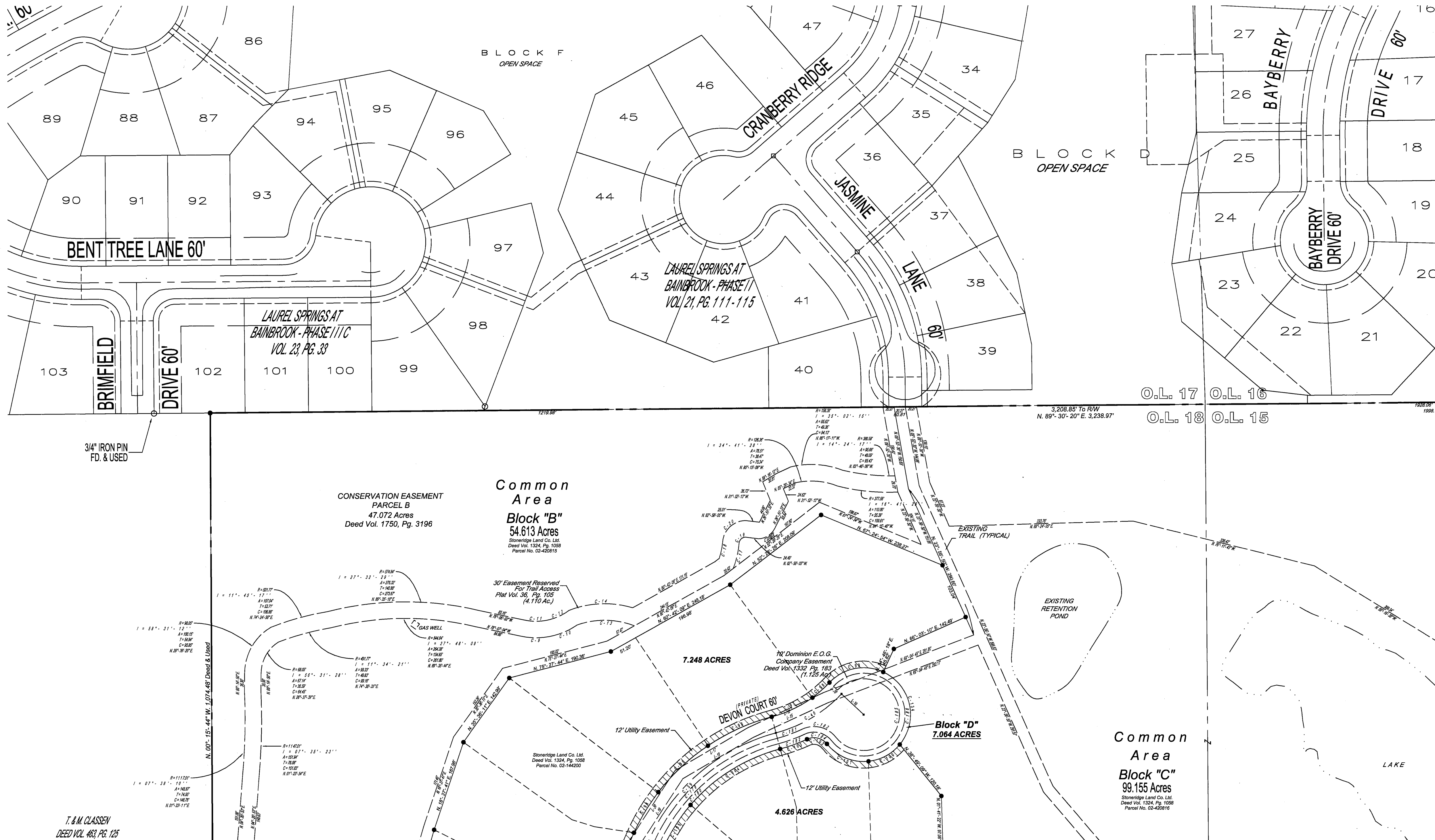
• DENOTES 3/4" IRON PIN SET  
■ DENOTES BOXLESS PAVEMENT MONUMENT  
▨ 12' UTILITY EASEMENT

Table with columns: NUMBER, DIRECTION, DISTANCE. Lists survey points L-1 through L-108 with their respective bearings and distances.

Table with columns: Number, Radius, Central Angle, Arc, Tangent, Chord, Chord Bearing. Lists curve data points C-1 through C-188 with their respective geometric parameters.

A Blanket Oil and Gas lease affects all of the land encompassing the Stoneledge of Geauga Subdivision, as recorded in Volume 690, Page 1003 and Volume 698, Page 1151 of the Geauga County Records.

V.40 P.17

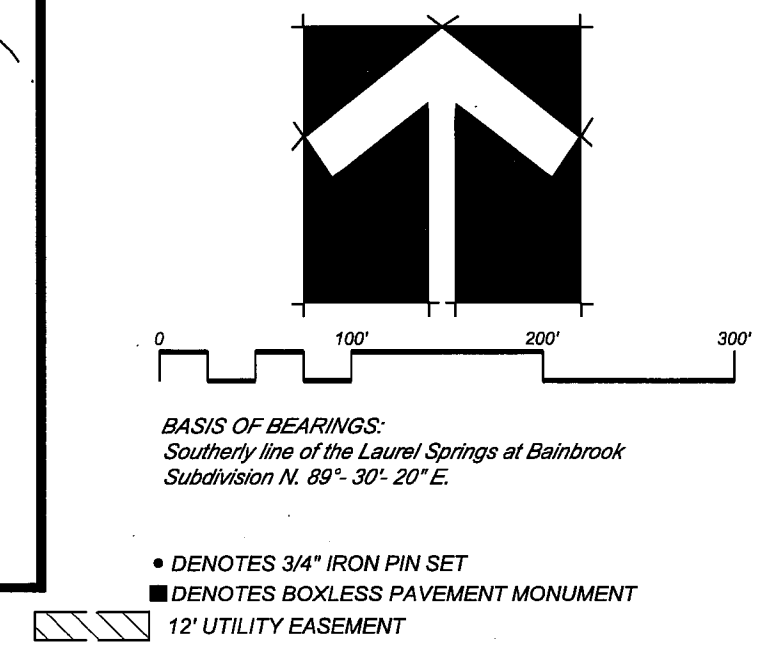


T. & M. CLASSEN  
DEED VOL. 463, PG. 125

SEE SHEET 2

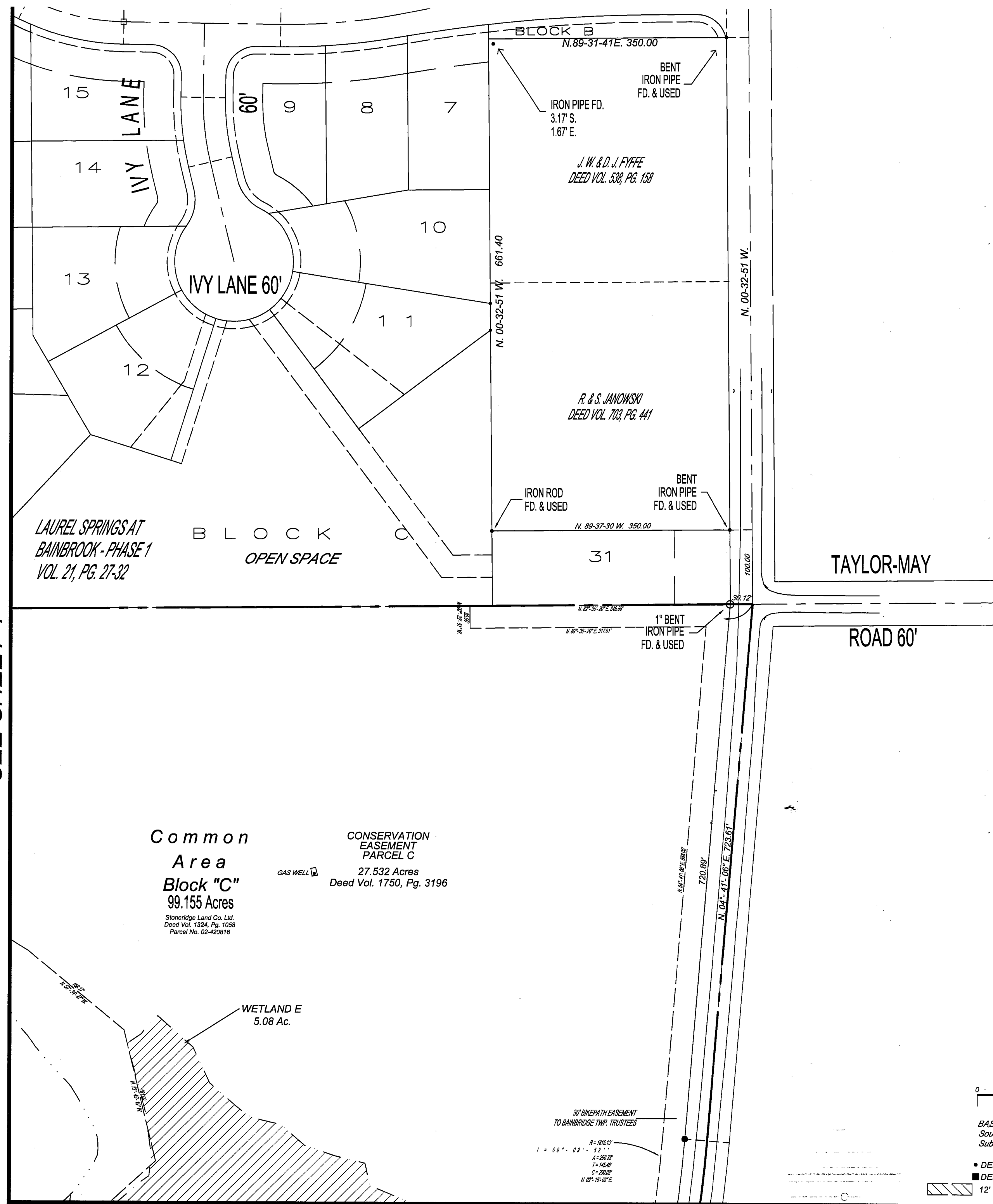
SEE SHEET 5

A Blanket Oil and Gas lease affects all of the land encompassing the Stoneidge of Geauga Subdivision, as recorded in Volume 690, Page 1003 and Volume 698, Page 1151 of the Geauga County Records.

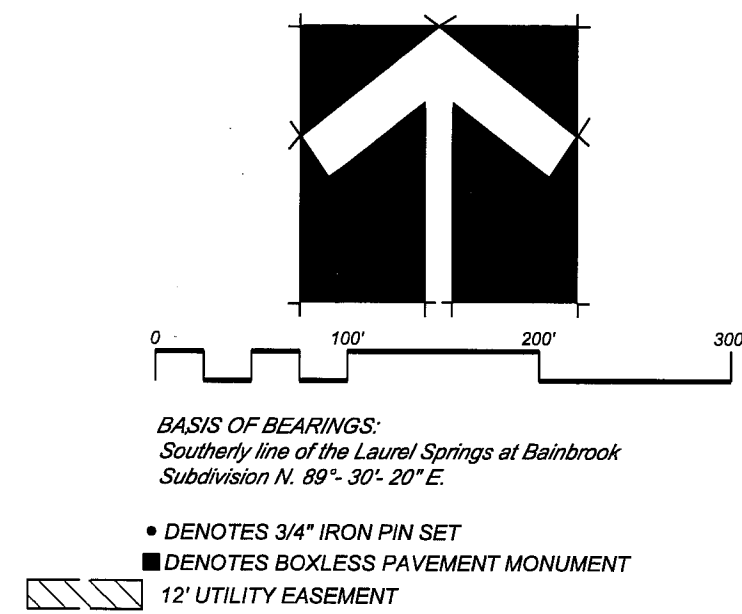


V.40 P.118

SEE SHEET 4



SEE SHEET 3



BASIS OF BEARINGS:  
Southerly line of the Laurel Springs at Bainbrook  
Subdivision N. 89°-30'-20"E.

- DENOTES 3/4" IRON PIN SET
- DENOTES BOXLESS PAVEMENT MONUMENT
- ▨ 12' UTILITY EASEMENT

A Blanket Oil and Gas lease affects all of the land encompassing the Storridge of Geauga Subdivision, as recorded in Volume 690, Page 1003 and Volume 698, Page 1151 of the Geauga County Records.

V.40 P.119