

FINAL PLAT
WOODSONG P.U.D. PHASE 4-A
 MIDDLEFIELD VILLAGE - GAUGA COUNTY - OHIO
 BEING A RESUBDIVISION OF BLOCKS "A" AND "B"
 OF WOODSONG P.U.D. PHASE 4
 AS SHOWN BY PLAT RECORDED IN VOLUME 38, PAGES 34-35
 OF GAUGA COUNTY PLAT RECORDS
 BEING A PART OF ORIGINAL MIDDLEFIELD TOWNSHIP LOT NO.31
 JUNE, 2006 SCALE 1 INCH = 50 FEET

ACCEPTANCE AND DEDICATION

BE IT KNOWN THAT MIDDLEFIELD PARKWAY LTD. PARTNERSHIP, BY COUNTRY HERITAGE HOMES INC. GENERAL PARTNERSHIP BY JOSEPH T. SVETE, ITS PRESIDENT, HEREBY CERTIFIES THAT THIS PLAT CORRECTLY REPRESENTS THEIR WOODSONG P.U.D. PHASE 4-A SUBDIVISION, A SUBDIVISION OF 4 (FOUR) LOTS NUMBERED 109 THROUGH 112 INCLUSIVE.

STORM SEWER EASEMENT TO WOODSONG MASTER ASSOCIATION INC. AND DOES ALSO HEREBY GRANT UNTO THE WOODSONG MASTER ASSOCIATION INC. ITS SUCCESSORS AND ASSIGNS (HEREINAFTER REFERRED TO AS THE GRANTEE) A PERMANENT EASEMENT (AS SHOWN) UNDER, OVER AND THROUGH ALL SUBLOTS, AND DELINEATED HEREON BY DASHED LINES AND LABELED "STORM SEWER EASEMENT TO HOMEOWNERS ASSOCIATION" TO CONSTRUCT, PLACE, OPERATE, MAINTAIN, REPAIR, RECONSTRUCT, AND RELOCATE STORM SEWER PIPE, SWALES AND/OR OTHER APPURTENANCES.

IN WITNESS WHEREOF, MIDDLEFIELD LTD. PARTNERSHIP, BY COUNTRY HERITAGE HOMES INC. GENERAL PARTNER, BY JOSEPH T. SVETE, ITS PRESIDENT, HAS CAUSED THIS

INSTRUMENT TO BE SUBSCRIBED AT MIDDLEFIELD OHIO, THIS 14TH 2006

DAY OF November 2006.

Joseph T. Svete
 JOSEPH T. SVETE
 PRESIDENT, COUNTRY HERITAGE HOMES INC.

SIGNED AND ACKNOWLEDGED IN THE PRESENCE OF:

Daniel A. Weir
 WITNESS

Daniel A. Weir
 NAME PRINTED

Carrie Ehrhart
 WITNESS

Carrie Ehrhart
 NAME PRINTED

200700770903
 Filed For Record in
 GAUGA COUNTY OHIO
 GLEN ERIC DUNIGLEY
 10-31-2007 At 02:43 pm.
 PLAT 40.00
 OK Book 40 Page 65 - 65

BEFORE ME, A NOTARY PUBLIC IN AND FOR SAID COUNTY AND STATE, PERSONALLY APPEARED THE ABOVE NAMED JOSEPH T. SVETE, WHO REPRESENTED THAT HE IS DULY AUTHORIZED IN THE PREMISES, WHO ACKNOWLEDGED THAT HE DID SIGN THE FOREGOING INSTRUMENT AND THAT THE SAME WAS HIS VOLUNTARY ACT AND DEED.

IN TESTIMONY WHEREOF, I HERETO SET MY HAND AND OFFICIAL SEAL AT Middlefield, OHIO, THIS 14 DAY OF November

2006.
Carrie Ehrhart
 NOTARY PUBLIC

CARRIE EHRHART
 Notary Public, State of Ohio
 My Commission Expires 12/10/08
 Recorded in Ashtabula County

MY COMMISSION EXPIRES: 12/10/08

APPROVALS
 APPROVED THIS 9 DAY OF September 2006

BY THE VILLAGE OF MIDDLEFIELD COUNCIL BY ORDINANCE NO. 06-138
Carol Osborne
 SIGNATURE

APPROVED THIS 2nd DAY OF November 2006

BY THE VILLAGE OF MIDDLEFIELD ENGINEER
Robert P. St...
 SIGNATURE

APPROVED THIS 2nd DAY OF November 2006

BY THE VILLAGE OF MIDDLEFIELD PLANNING COMMISSION
William Park Jr
 SIGNATURE

APPROVED THIS 16th DAY OF November 2006

BY THE VILLAGE OF MIDDLEFIELD SOLLICITOR
[Signature]
 SIGNATURE

TRANSFERRED THIS 31st DAY OF OCTOBER 2006

Tracy A. Jemin
 GAUGA COUNTY AUDITOR

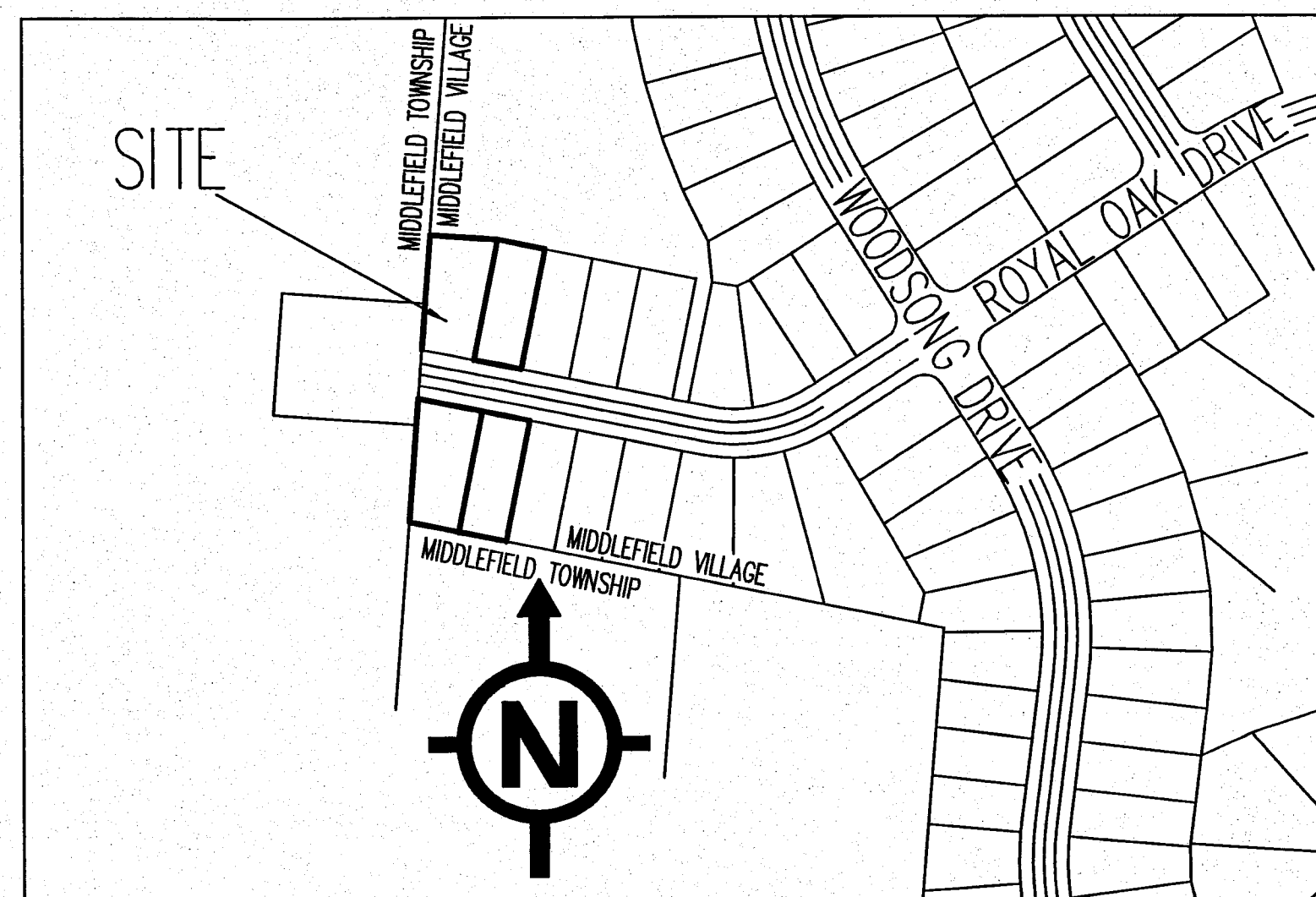
FILED FOR RECORD THIS 31st DAY OF October 2006

AT 2:43 pm

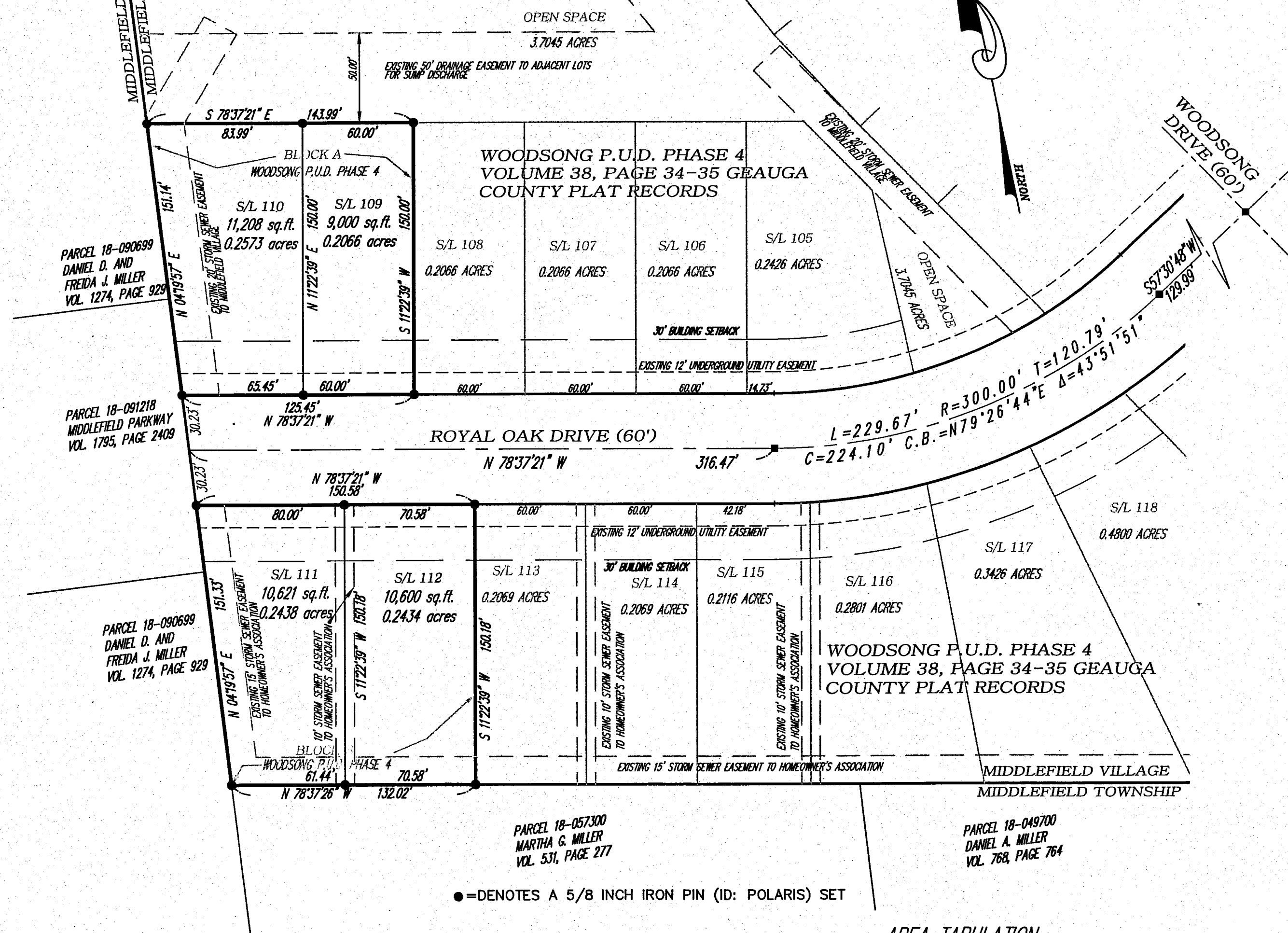
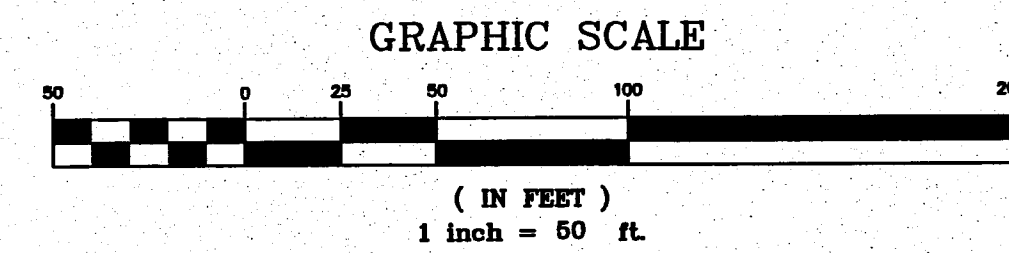
RECORDED THIS 31st DAY OF October 2006

IN PLAT BOOK VOLUME 40 PAGE 65

Glen Quigley by Jan Vondrasak, Deputy Recorder
 GAUGA COUNTY RECORDER



VICINITY MAP - NOT TO SCALE



● = DENOTES A 5/8 INCH IRON PIN (ID: POLARIS) SET

FRONT YARD SETBACK - 30 FEET
 REAR YARD SETBACK - 30 FEET
 MINIMUM LOT WIDTH - 60 FEET AT BUILDING SETBACK
 SIDEYARD - 15 FEET FROM ADJACENT BUILDING - 7.5 FEET FROM LOT LINE

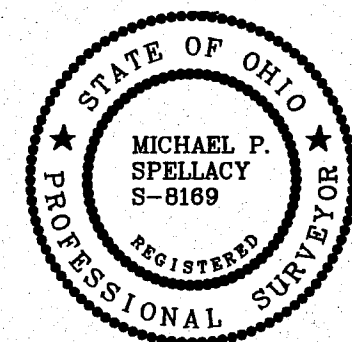
AREA TABULATION

NUMBER OF SUBLOTS.....	4
AREA IN SUBLOTS.....	0.9511 ACRES
AREA IN RIGHT OF WAY.....	0.0000 ACRES
TOTAL AREA.....	0.9511 ACRES

THIS IS TO CERTIFY THAT AT THE REQUEST OF THE OWNER, I HAVE SURVEYED AND PLATTED WOODSONG P.U.D. PHASE 4-A SUBDIVISION AS SHOWN HEREON AND CONTAINING 0.9511 ACRES OF LAND. AT ALL POINTS SO INDICATED MONUMENTS WERE EITHER FOUND OR SET. DISTANCES SHOWN ARE IN FEET AND DECIMAL PARTS THEREOF. BEARINGS REFER TO THE PLAT FOR WOODSONG P.U.D. PHASE 4 SUBDIVISION AS SHOWN BY PLAT RECORDED IN VOLUME 38, PAGES 34-35 OF GAUGA COUNTY PLAT RECORDS. ALL OF WHICH I CERTIFY TO BE CORRECT TO THE BEST OF MY KNOWLEDGE AND BELIEF.

Michael P. Spellacy 9-27-06
 MICHAEL P. SPELLACY P.S. 6169 DATE

V.40 P.65

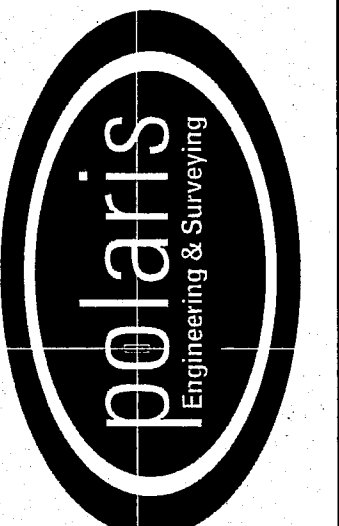


REV. No.	DATE	BY	CH'K'D

DATE: 07/28/06
 SCALE: HOR. 1"=50'
 VERT. ---
 FOLDER: 2008/08125/plat
 FILENAME: Woodsong 4-A
 TAB: PLAT-01
 DRAWN: MPS

WOODSONG P.U.D. PHASE 4-A
 SUBDIVISION
 MIDDLEFIELD VILLAGE - GAUGA COUNTY - OHIO

POLARIS ENGINEERING & SURVEYING, INC.
 34600 CHARLON ROAD - SUITE D
 WILLOUGHBY HILLS, OHIO 44094
 (440) 944-4433 (440) 944-3722 (Fax)
 www.polaris-es.com



RECORD
 PLAT

CONTRACT No.
06-125
 SHEET OF
01 01