

EXHIBIT A
DECLARATION OF CONDOMINIUM OWNERSHIP
FOR

COTTONWOOD OF GEAUGA CONDOMINIUM PHASE 2

BUILDING 5 (UNITS 40, 41, 42, 43, 44, 45, 46 & 47)

KNOWN AS BEING PART OF ORIGINAL MIDDLEFIELD TOWNSHIP LOT NOS. 23 AND 28.
CONTAINING 6.598 ACRES. BEING THE LAND CONVEYED TO PBP LTD. BY DEED RECORDED
IN VOLUME 1743 PAGE 1560 OF GEAUGA COUNTY RECORDS.

NOW IN MIDDLEFIELD VILLAGE, GEAUGA COUNTY, STATE OF OHIO

SCALE: 1"=50'



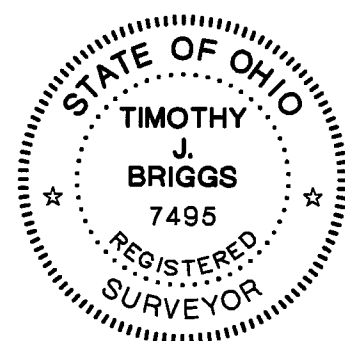
CAMPBELL &
ASSOCIATES, INC.
Surveying · Engineering
(330) 945-4117

1923 Bailey Road Suite A Cuyahoga Falls, Ohio 44221

SURVEYOR'S CERTIFICATION

THE UNDERSIGNED HEREBY CERTIFIES THAT THIS PLAT WAS PREPARED FROM A SURVEY DATED DECEMBER, 2003, THAT THE SAME SHOWS GRAPHICALLY, INSOFAR AS POSSIBLE, THE LOCATION OF BOUNDARIES, THE LAYOUT, LOCATION DESIGNATION AND DIMENSIONS OF THE BUILDINGS, COMMON AREAS AND LIMITED COMMON AREAS, THE LOCATION AND DIMENSIONS OF ALL APPURTENANT EASEMENTS, THAT THERE ARE NO ENCROACHMENTS UPON THE SUBJECT PREMISES NOR FROM THE SUBJECT PREMISES, OTHER THAN SHOWN; THAT ALL PROPERTIES SURVEYED, INCLUDING THE RIGHT OF WAY LINES FOR STATE ROUTE 528 ARE CONTIGUOUS TO THE PERIMETER LINES OF THE PREMISES ALONG THEIR ENTIRE LENGTH.

Timothy J. Briggs July 24, 2007
TIMOTHY J. BRIGGS, P.L.S. NO. 7495 DATE
CAMPBELL AND ASSOCIATES, INC.



APPROVED BY MIDDLEFIELD VILLAGE ENGINEER
THIS 30th DAY OF July, 20 07.
Robert A. [Signature]
ENGINEER
Tracy A. [Signature]
AUDITOR

TRANSFERRED 7-31, 20 07.
Tracy A. [Signature]
AUDITOR

PBP LTD.
By: PETERSEN DEVELOPMENT LTD.
By: *Jerry Peterson*
JERRY PETERSEN, Member
By: *Steve Peterson*
STEVEN PETERSEN, Member

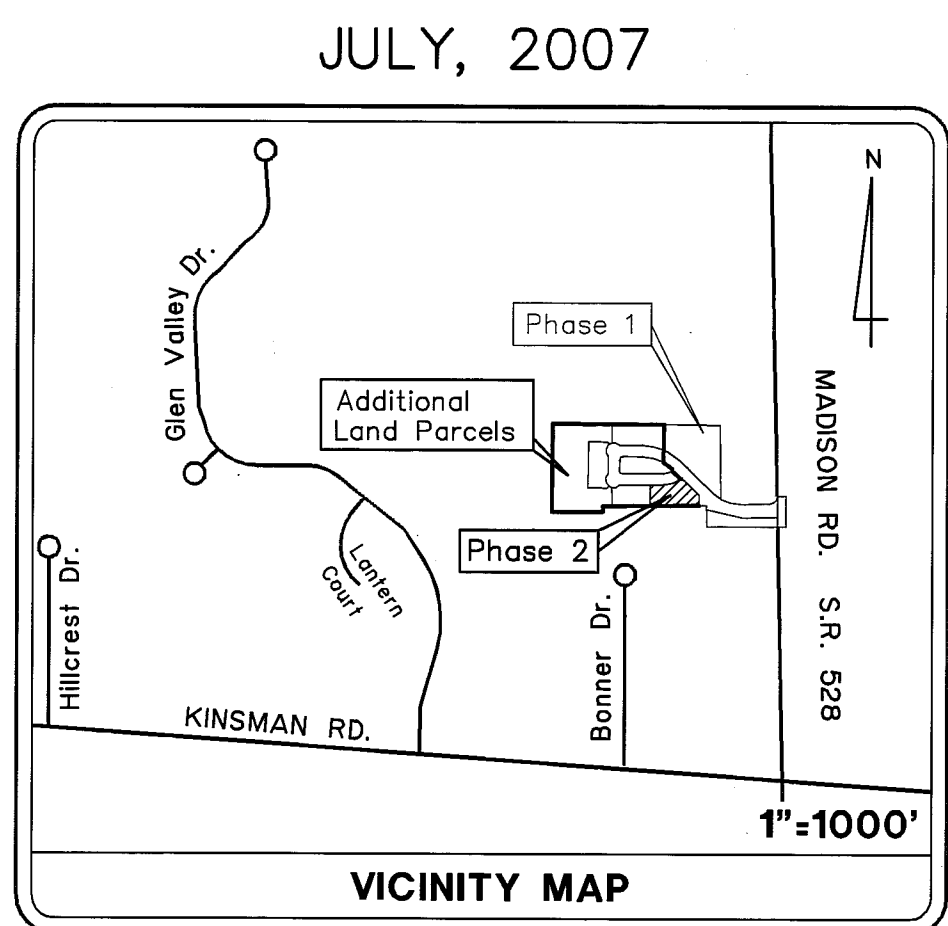
State of Ohio SS.
County of Geauga

BEFORE ME, a Notary Public, in and for said County and State, personally appeared the above-named PETERSEN DEVELOPMENT LTD., by JERRY PETERSEN and STEVE PETERSEN its Members, who acknowledged that they did sign the foregoing Mortgage Deed, and that the same is their free act and deed individually and as members of PBP LTD.

IN TESTIMONY WHEREOF, I have hereunto set my hand and official seal, at Chardon, Ohio this 30th day of July, 2007.

DEBORAH A. PROSSER
Notary Public, State of Ohio
My Commission Expires 07/04/12
Recorded in Geauga County

DEBORAH A. PROSSER
NOTARY PUBLIC



PHASE NO. 2 = 0.656 Ac.
ADDITIONAL LAND (REMAINDER)

PARCEL 1	=	1.575 Ac.
PARCEL 2	=	0.504 Ac.
PARCEL 3	=	0.691 Ac.
PARCEL 4	=	2.562 Ac.
PARCEL 5	=	0.610 Ac.
TOTAL		= 6.598 Ac.

INDEX

NAME	SHEET NO.
TITLE SHEET	1
TITLE SHEET(Continued)	2
CONDOMINIUM DOMAIN	3
BUILDING 5 DIMENSIONS	4
ELEVATION (BLDG. 5)	5
FLOOR PLAN (BLDG. 5)	
TYPICAL UNIT A, UNIT B	6

Description of a 0.656 acre tract, Phase 2

Situated in the Village of Middlefield, County of Geauga and State of Ohio, and being part of Original Lot 23 and 28 of Middlefield Township, and further known as being part of a tract of land now or formerly conveyed to PBP Ltd. by Deed Volume 1743, Page 1560 of the Geauga County Recorder's Office, described as follows:

Beginning at a 5/8 inch bar found at the northeasterly corner of former Sublot 4 of Bonner Industrial Park Subdivision as recorded in Plat Volume 29, Page 21 of the Geauga County Recorder's Office, also on the westerly line of State Route 528, Madison Road a variable width public right of way; thence South 89 degrees 44 minutes 53 seconds West along the northerly line of said Bonner Industrial Park Subdivision a distance of 375.00 feet to a 5/8 inch rebar with cap set; thence North 00 degrees 15 minutes 07 seconds West continuing along the northerly line of said Bonner Industrial Park Subdivision a distance of 110.00 feet to a 5/8 inch iron pin found; thence South 89 degrees 44 minutes 53 seconds West continuing along the northerly line of said Bonner Industrial Park Subdivision a distance of 37.87 feet to a 5/8 inch rebar with cap set and the true place of beginning;

thence South 89 degrees 44 minutes 53 seconds West continuing along the northerly line of said Bonner Industrial Park Subdivision a distance of 257.23 feet to a 5/8 inch rebar with cap set;

thence North 00 degrees 15 minutes 07 seconds West a distance of 110.00 feet to a 5/8 inch rebar with cap set;

thence North 89 degrees 44 minutes 53 seconds East a distance of 71.09 feet to a 5/8 inch rebar with cap set at a point of curvature;

thence with a curve turning to the left having a radius of 130.00 feet, with an arc length of 95.76 feet, with a delta angle of 42 degrees 12 minutes 15 seconds, with a chord bearing of North 68 degrees 38 minutes 45 seconds East, with a chord length of 93.61 feet to a 5/8 inch rebar with cap set at a point of reverse curvature;

thence with a curve turning to the right having a radius of 6.00 feet, with an arc length of 9.05 feet, with a delta angle of 86 degrees 25 minutes 06 seconds, with a chord bearing of South 89 degrees 14 minutes 49 seconds East, with a chord length of 8.22 feet to a 5/8 inch rebar with cap set at a point of tangency;

thence South 46 degrees 02 minutes 16 seconds East a distance of 126.40 feet to a 5/8 inch rebar with cap set;

thence South 00 degrees 15 minutes 07 seconds East a distance of 55.41 feet to the true place of beginning.

The above described tract of land contains an area of 28,551.9 square feet or 0.656 acres as surveyed under the direction of Timothy J. Briggs, P.S. 7495, Campbell & Associates, Inc. of Cuyahoga Falls, Ohio in December of 2003 and July of 2007. Basis of bearings is North 00 degrees 00 minutes 25 seconds East, the centerline of State Route 528 between monuments found at the centerline intersection of State Route 87 and northerly, per survey plat by Land Design Consultants dated 1999 and is assumed. Subject to all easements and right of ways of public record or as otherwise legally established.

Description of a 1.575 acre tract, Additional Land Parcel 1 (inclusive of a 60' Utility and Roadway Easement)

Situated in the Village of Middlefield, County of Geauga and State of Ohio, and being part of Original Lot 23 of Middlefield Township, and further known as being part of a tract of land now or formerly conveyed to PBP Ltd. by Deed Volume 1743, Page 1560 of the Geauga County Recorder's Office, described as follows:

Beginning at a 5/8 inch bar found at the northeasterly corner of former Sublot 4 of Bonner Industrial Park Subdivision as recorded in Plat Volume 29, Page 21 of the Geauga County Recorder's Office, also on the westerly line of State Route 528, Madison Road a variable width public right of way; thence South 89 degrees 44 minutes 53 seconds West along the northerly line of said Bonner Industrial Park Subdivision a distance of 375.00 feet to a 5/8 inch rebar with cap set; thence North 00 degrees 15 minutes 07 seconds West continuing along the northerly line of said Bonner Industrial Park Subdivision a distance of 110.00 feet to a 5/8 inch iron pin found; thence South 89 degrees 44 minutes 53 seconds West continuing along the northerly line of said Bonner Industrial Park Subdivision a distance of 295.10 feet to a 5/8 inch rebar with cap set, passing through a 5/8 inch rebar with cap set at a distance of 37.87 feet; thence North 00 degrees 15 minutes 07 seconds West a distance of 110.00 feet to a 5/8 inch rebar with cap set and the true place of beginning;

thence South 89 degrees 44 minutes 53 seconds West a distance of 162.21 feet to a point;

thence with a non-tangential curve turning to the right with a radius of 42.50 feet, with an arc length of 134.10 feet, with a delta angle of 180 degrees 47 minutes 23 seconds, with a chord bearing of North 44 degrees 57 minutes 23 seconds West, with a chord length of 85.00 feet;

thence North 00 degrees 20 minutes 22 seconds East a distance of 91.58 feet to a point;

thence with a non-tangential curve turning to the right with a radius of 42.50 feet, with an arc length of 133.81 feet, with a delta angle of 180 degrees 23 minutes 30 seconds, with a chord bearing of North 45 degrees 26 minutes 10 seconds East, with a chord length of 85.00 feet;

thence South 89 degrees 28 minutes 02 seconds East a distance of 121.96 feet to a point;

thence with a curve turning to the right with a radius of 280.00 feet, with an arc length of 109.24 feet, with a delta angle of 22 degrees 21 minutes 14 seconds, with a chord bearing of South 78 degrees 17 minutes 25 seconds East, with a chord length of 108.55 feet;

thence North 23 degrees 34 minutes 52 seconds East a distance of 5.00 feet to a point;

thence South 00 degrees 31 minutes 58 seconds West a distance of 72.15 feet to a 5/8 inch rebar with cap set;

thence with a non-tangential curve turning to the right with a radius of 220.00 feet, with an arc length of 53.35 feet, with a delta angle of 13 degrees 53 minutes 40 seconds, with a chord bearing of South 52 degrees 59 minutes 07 seconds East, with a chord length of 53.22 feet to a 5/8 inch rebar with cap set at a point of tangency;

thence South 46 degrees 02 minutes 17 seconds East a distance of 4.91 feet to a 5/8 inch rebar with cap set at a point of curvature;

thence with a curve turning to the right with a radius of 6.00 feet, with an arc length of 10.22 feet, with a delta angle of 97 degrees 37 minutes 44 seconds, with a chord bearing of South 02 degrees 46 minutes 35 seconds West, with a chord length of 9.03 feet to a 5/8 inch rebar with cap set;

thence South 47 degrees 08 minutes 59 seconds East a distance of 60.38 feet to a 5/8 inch rebar with cap set;

thence with a non-tangential curve turning to the right with a radius of 130.00 feet, with an arc length of 95.76 feet, with a delta angle of 42 degrees 12 minutes 15 seconds, with a chord bearing of South 68 degrees 38 minutes 45 seconds West, with a chord length of 93.61 feet to a point of tangency;

thence South 89 degrees 44 minutes 53 seconds West a distance of 71.09 feet to the true place of beginning.

The above described tract of land contains an area of 68,606.0 square feet or 1.575 acres as surveyed under the direction of Timothy J. Briggs, P.S. 7495, Campbell & Associates, Inc. of Cuyahoga Falls, Ohio in December of 2003 and July of 2007. Basis of bearings is North 00 degrees 00 minutes 25 seconds East, the centerline of State Route 528 between monuments found at the centerline intersection of State Route 87 and northerly, per survey plat by Land Design Consultants dated 1999 and is assumed. Subject to all easements and right of ways of public record or as otherwise legally established.

V.40 P.38

Description of a 0.504 acre tract, Additional Land Parcel 2

Situated in the Village of Middlefield, County of Geauga and State of Ohio, and being part of Original Lot 23 and 28 of Middlefield Township, and further known as being part of a tract of land now or formerly conveyed to PBP Ltd. by Deed Volume 1743, Page 1560 of the Geauga County Recorder's Office, described as follows:

Beginning at a 5/8 inch bar found at the northeasterly corner of former Sublot 4 of Bonner Industrial Park Subdivision as recorded in Plat Volume 29, Page 21 of the Geauga County Recorder's Office, also on the westerly line of State Route 528, Madison Road a variable width public right of way; thence South 89 degrees 44 minutes 53 seconds West along the northerly line of said Bonner Industrial Park Subdivision a distance of 375.00 feet to a 5/8 inch rebar with cap set; thence North 00 degrees 15 minutes 07 seconds West continuing along the northerly line of said Bonner Industrial Park Subdivision a distance of 110.00 feet to a 5/8 inch iron pin found; thence South 89 degrees 44 minutes 53 seconds West continuing along the northerly line of said Bonner Industrial Park Subdivision a distance of 295.10 feet to a 5/8 inch rebar with cap set and the true place of beginning, passing through a 5/8 inch rebar with cap set at a distance of 37.87 feet;

thence South 89 degrees 44 minutes 53 seconds West, continuing along the northerly line of said Bonner Industrial Park Subdivision, a distance of 203.00 feet to a point;

thence North 00 degrees 15 minutes 07 seconds West a distance of 98.87 feet to a point;

thence with a non-tangential curve turning to the left having a radius of 42.50 feet, with an arc length of 44.25 feet, with a delta angle of 59 degrees 39 minutes 36 seconds, with a chord bearing of North 74 degrees 28 minutes 44 seconds East, with a chord length of 42.28 feet to a point;

thence North 89 degrees 44 minutes 53 seconds East a distance of 162.21 feet to a 5/8 inch rebar with cap set;

thence South 00 degrees 15 minutes 07 seconds East a distance of 110.00 feet to the true place of beginning.

The above described tract of land contains an area of 21,942.0 square feet or 0.504 acres as surveyed under the direction of Timothy J. Briggs, P.S. 7495, Campbell & Associates, Inc. of Cuyahoga Falls, Ohio in December of 2003 and July of 2007. Basis of bearings is North 00 degrees 00 minutes 25 seconds East, the centerline of State Route 528 between monuments found at the centerline intersection of State Route 87 and northerly, per survey plat by Land Design Consultants dated 1999 and is assumed. Subject to all easements and right of ways of public record or as otherwise legally established.

Description of a 0.691 acre tract, Additional Land Parcel 3

Situated in the Village of Middlefield, County of Geauga and State of Ohio, and being part of Original Lot 23 of Middlefield Township, and further known as being part of a tract of land now or formerly conveyed to PBP Ltd. by Deed Volume 1743, Page 1560 of the Geauga County Recorder's Office, described as follows:

Beginning at a 5/8 inch bar found at the northeasterly corner of former Sublot 4 of Bonner Industrial Park Subdivision as recorded in Plat Volume 29, Page 21 of the Geauga County Recorder's Office, also on the westerly line of State Route 528, Madison Road a variable width public right of way; thence North 00 degrees 15 minutes 06 seconds West, along the westerly line of said State Route 528, a distance of 530.00 feet to a point at the southeasterly corner of a parcel of land now or formerly conveyed to Glen Valley Farms, Ltd. by Deed Volume 1135, Page 20 of the Geauga County Recorder's Office, witness a 1-inch iron bar found South 0.08 feet; thence North 89 degrees 28 minutes 02 seconds West, along the southerly line of said Glen Valley Farms parcel, a distance of 598.50 feet to a point at the northwesterly corner of Cottonwood of Geauga Condominium Phase 1 as recorded in Plat Volume 37, Pages 74-78 of the Geauga County Recorder's Office, and the true place of beginning, witness a 5/8 inch rebar with cap set South 00 degrees 31 minutes 58 seconds West at a distance of 5.00 feet;

thence South 00 degrees 31 minutes 58 seconds West, along the westerly line of said Cottonwood of Geauga Condominium Phase 1, a distance of 126.44 feet to a point, passing through a 5/8 inch rebar with cap set at distances of 5.00 feet and 121.44 feet;

thence South 23 degrees 34 minutes 52 seconds West a distance of 5.00 feet to a point;

thence with a non-tangential curve turning to the left with a radius of 280.00 feet, with an arc length of 109.24 feet, with a delta angle of 22 degrees 21 minutes 14 seconds, with a chord bearing of North 78 degrees 17 minutes 25 seconds West, with a chord length of 108.55 feet to a point of tangency;

thence North 89 degrees 28 minutes 02 seconds West a distance of 121.96 feet to a point;

thence with a non-tangential curve turning to the left with a radius of 42.50 feet, with an arc length of 43.02 feet, with a delta angle of 57 degrees 59 minutes 55 seconds, with a chord bearing of North 73 degrees 22 minutes 02 seconds West, with a chord length of 41.21 feet to a point;

thence North 00 degrees 31 minutes 58 seconds East a distance of 98.57 feet to a point on the southerly line of said Glen Valley Farms parcel;

thence South 89 degrees 28 minutes 02 seconds East, continuing along the southerly line of said Glen Valley Farms parcel, a distance of 270.00 feet to the true place of beginning.

The above described tract of land contains an area of 30,097.5 square feet or 0.691 acres as surveyed under the direction of Timothy J. Briggs, P.S. 7495, Campbell & Associates, Inc. of Cuyahoga Falls, Ohio in December of 2003 and July of 2007. Basis of bearings is North 00 degrees 00 minutes 25 seconds East, the centerline of State Route 528 between monuments found at the centerline intersection of State Route 87 and northerly, per survey plat by Land Design Consultants dated 1999 and is assumed. Subject to all easements and right of ways of public record or as otherwise legally established.

Description of a 2.562 acre tract, Additional Land Parcel 4

Situated in the Village of Middlefield, County of Geauga and State of Ohio, and being part of Original Lot 23 and 28 of Middlefield Township, and further known as being part of a tract of land now or formerly conveyed to PBP Ltd. by Deed Volume 1743, Page 1560 of the Geauga County Recorder's Office, described as follows:

Beginning at a 5/8 inch bar found at the northeasterly corner of former Sublot 4 of Bonner Industrial Park Subdivision as recorded in Plat Volume 29, Page 21 of the Geauga County Recorder's Office, also on the westerly line of State Route 528, Madison Road a variable width public right of way; thence South 89 degrees 44 minutes 53 seconds West along the northerly line of said Bonner Industrial Park Subdivision a distance of 375.00 feet to a 5/8 inch rebar with cap set; thence North 00 degrees 15 minutes 07 seconds West continuing along the northerly line of said Bonner Industrial Park Subdivision a distance of 110.00 feet to a 5/8 inch iron pin found; thence South 89 degrees 44 minutes 53 seconds West continuing along the northerly line of said Bonner Industrial Park Subdivision a distance of 498.10 feet to a point and the true place of beginning, passing through a 5/8 inch rebar with cap set at distances of 37.87 feet and 295.10 feet;

thence South 89 degrees 44 minutes 53 seconds West, continuing along the northerly line of said Bonner Industrial Park Subdivision, a distance of 44.90 feet to a 5/8 inch rebar with cap set;

thence South 00 degrees 15 minutes 07 seconds East, continuing along the northerly line of said Bonner Industrial Park Subdivision, a distance of 30.00 feet to a 5/8 inch rebar with cap set;

thence South 89 degrees 44 minutes 53 seconds West, continuing along the northerly line of said Bonner Industrial Park Subdivision, a distance of 268.53 feet to a 5/8 inch rebar with cap set at the northwesterly corner of said Bonner Industrial Park Subdivision, which is also on the easterly line of a parcel of land now or formerly conveyed to Mesopotamia Covenant Fellowship Church (A.K.A. Christ Covenant Church) by Deed Volume 848, Page 366 of the Geauga County Recorder's Office, witness a 5/8 inch rebar found South 38 degrees 00 minutes 38 seconds West at a distance of 0.29 feet;

thence North 00 degrees 20 minutes 22 seconds East, along the easterly line of said Mesopotamia Covenant Fellowship Church and the easterly line of a parcel of land now or formerly conveyed to Glen Valley Farms, Ltd. by Deed Volume 1133, Page 679 of the Geauga County Recorder's Office, a distance of 466.21 feet to a 5/8 inch iron bar with I.D. cap marked "L.D.C." found at the northeasterly corner of said Glen Valley Farms parcel, which is also the southerly line of a parcel of land now or formerly conveyed to Glen Valley Farms, Ltd. by Deed Volume 1135, Page 20 of the Geauga County Recorder's Office;

thence South 89 degrees 28 minutes 02 seconds East, along the southerly line of said Glen Valley Farms parcel, a distance of 313.33 feet to a point;

thence South 00 degrees 31 minutes 58 seconds West a distance of 98.57 feet to a point;

thence with a non-tangential curve turning to the left having a radius of 42.50 feet, with an arc length of 17.10 feet, with a delta angle of 23 degrees 03 minutes 07 seconds, with a chord bearing of South 66 degrees 06 minutes 27 seconds West, with a chord length of 16.98 feet to a point;

thence North 36 degrees 15 minutes 38 seconds West a distance of 20.45 feet to a point;

thence North 89 degrees 39 minutes 38 seconds West a distance of 102.46 feet to a point;

thence South 00 degrees 20 minutes 22 seconds West a distance of 252.50 feet to a point;

thence South 89 degrees 39 minutes 38 seconds East a distance of 100.60 feet to a point;

thence North 38 degrees 19 minutes 19 seconds East a distance of 20.70 feet to a point;

thence with a non-tangential curve turning to the left having a radius of 42.50 feet, with an arc length of 17.81 feet, with a delta angle of 24 degrees 00 minutes 47 seconds, with a chord bearing of South 63 degrees 41 minutes 04 seconds East, with a chord length of 17.68 feet to a point;

thence South 00 degrees 15 minutes 07 seconds East a distance of 98.87 feet to the true place of beginning.

The above described tract of land contains an area of 111,618.7 square feet or 2.562 acres as surveyed under the direction of Timothy J. Briggs, P.S. 7495, Campbell & Associates, Inc. of Cuyahoga Falls, Ohio in December of 2003 and July of 2007. Basis of bearings is North 00 degrees 00 minutes 25 seconds East, the centerline of State Route 528 between monuments found at the centerline intersection of State Route 87 and northerly, per survey plat by Land Design Consultants dated 1999 and is assumed. Subject to all easements and right of ways of public record or as otherwise legally established.

Description of a 0.610 acre tract, Additional Land Parcel 5

Situated in the Village of Middlefield, County of Geauga and State of Ohio, and being part of Original Lot 23 of Middlefield Township, and further known as being part of a tract of land now or formerly conveyed to PBP Ltd. by Deed Volume 1743, Page 1560 of the Geauga County Recorder's Office, described as follows:

Beginning at a 5/8 inch bar found at the northeasterly corner of former Sublot 4 of Bonner Industrial Park Subdivision as recorded in Plat Volume 29, Page 21 of the Geauga County Recorder's Office, also on the westerly line of State Route 528, Madison Road a variable width public right of way; thence South 89 degrees 44 minutes 53 seconds West along the northerly line of said Bonner Industrial Park Subdivision a distance of 375.00 feet to a 5/8 inch rebar with cap set; thence North 00 degrees 15 minutes 07 seconds West continuing along the northerly line of said Bonner Industrial Park Subdivision a distance of 110.00 feet to a 5/8 inch iron pin found; thence South 89 degrees 44 minutes 53 seconds West continuing along the northerly line of said Bonner Industrial Park Subdivision a distance of 498.10 feet to a point, passing through a 5/8 inch rebar with cap set at distances of 37.87 feet and 295.10 feet; thence North 00 degrees 15 minutes 07 seconds West a distance of 98.87 feet to a point; thence with a non-tangential curve turning to the right having a radius of 42.50 feet, with an arc length of 17.61 feet, with a delta angle of 24 degrees 00 minutes 47 seconds, with a chord bearing of South 63 degrees 41 minutes 04 seconds East, with a chord length of 17.68 feet to a point and the true place of beginning;

thence South 38 degrees 19 minutes 19 seconds West a distance of 20.70 feet to a point;

thence North 89 degrees 39 minutes 38 seconds West a distance of 100.60 feet to a point;

thence North 00 degrees 20 minutes 22 seconds East a distance of 252.50 feet to a point;

thence South 89 degrees 39 minutes 38 seconds East a distance of 102.46 feet to a point;

thence South 36 degrees 15 minutes 38 seconds East a distance of 20.45 feet to a point;

thence with a non-tangential curve turning to the left with a radius of 42.50 feet, with an arc length of 73.69 feet, with a delta angle of 99 degrees 20 minutes 28 seconds, with a chord bearing of South 04 degrees 54 minutes 39 seconds West, with a chord length of 64.80 feet;

thence South 00 degrees 20 minutes 22 seconds West a distance of 91.58 feet to a point;

thence with a non-tangential curve turning to the left with a radius of 42.50 feet, with an arc length of 72.04 feet, with a delta angle of 97 degrees 07 minutes 00 seconds, with a chord bearing of South 03 degrees 07 minutes 11 seconds East, with a chord length of 63.72 feet to the true place of beginning.

The above described tract of land contains an area of 26,569.5 square feet or 0.610 acres as surveyed under the direction of Timothy J. Briggs, P.S. 7495, Campbell & Associates, Inc. of Cuyahoga Falls, Ohio in December of 2003 and July of 2007. Basis of bearings is North 00 degrees 00 minutes 25 seconds East, the centerline of State Route 528 between monuments found at the centerline intersection of State Route 87 and northerly, per survey plat by Land Design Consultants dated 1999 and is assumed. Subject to all easements and right of ways of public record or as otherwise legally established.

V.40 P.39

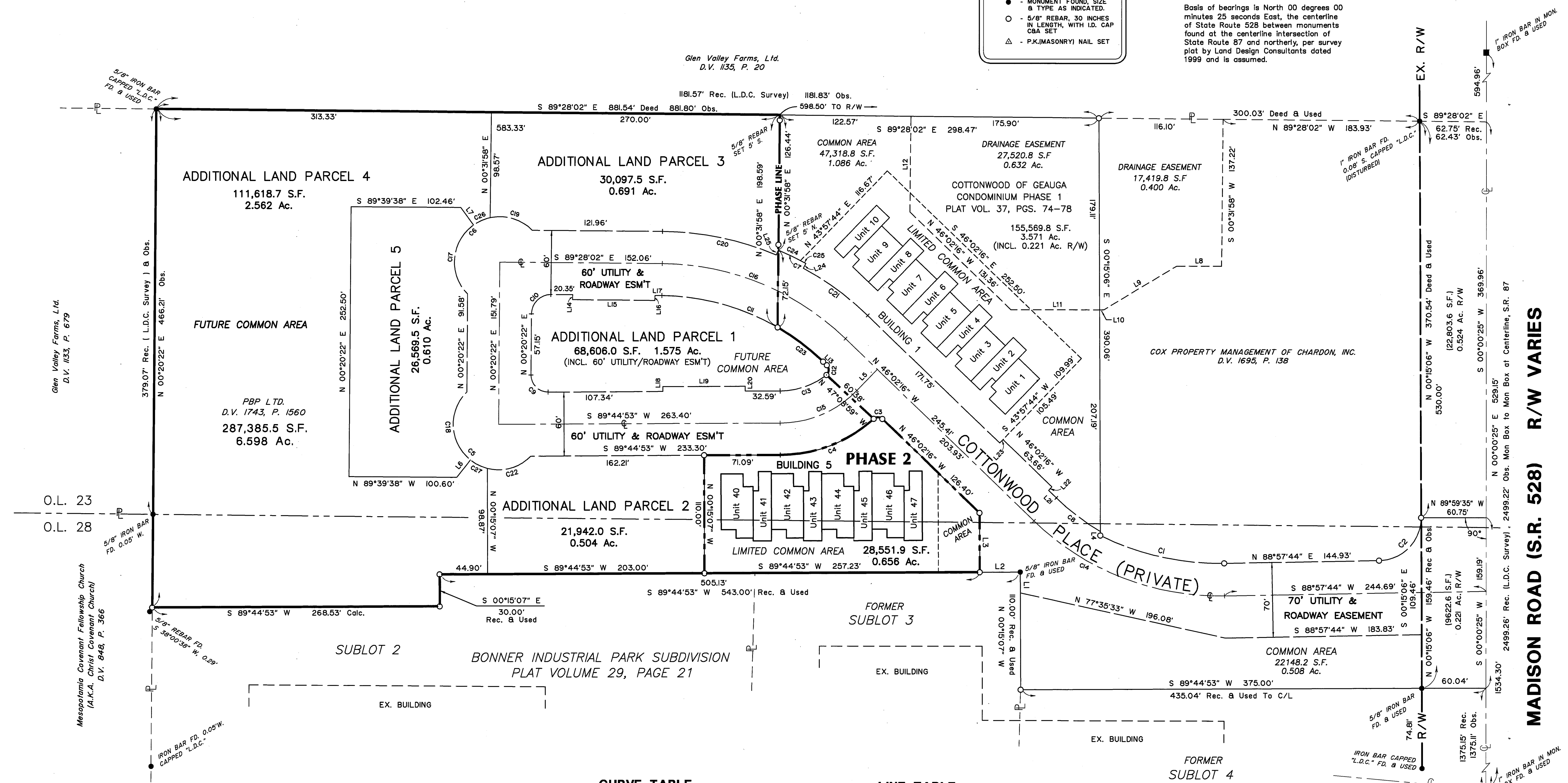
STATE OF OHIO, COUNTY OF GEauga,
MIDDLEFIELD VILLAGE, BEING PT. OF ORIGINAL
MIDDLEFIELD TOWNSHIP LOT NOS. 23 & 28.

LEGEND

- REC. - RECORD DISTANCE OR ANGLE
- CAL. - CALCULATED DISTANCE OR ANGLE
- OBS. - OBSERVED DISTANCE OR ANGLE
- - MONUMENT BOX
- - MONUMENT FOUND, SIZE & TYPE AS INDICATED.
- - 5/8" REBAR, 30 INCHES IN LENGTH, WITH I.D. CAP C&A SET
- △ - P.K.(MASONRY) NAIL SET

0' 50' 100' 150'
SCALE: 1"=50'

BASIS OF BEARINGS
Basis of bearings is North 00 degrees 00 minutes 25 seconds East, the centerline of State Route 528 between monuments found at the centerline intersection of State Route 87 and northerly, per survey plot by Land Design Consultants dated 1999 and is assumed.



CURVE TABLE

CURVE	RADIUS	ARC LENGTH	CHORD LENGTH	CHORD BEARING	DELTA ANGLE
C1	250.00'	119.79'	118.84'	S 77°18'41" E	27°27'11"
C2	40.00'	62.28'	56.18'	N 44°21'21" E	89°12'38"
C3	6.00'	9.05'	8.22'	S 89°44'53" W	86°25'06"
C4	130.00'	95.78'	93.81'	N 88°57'44" E	42°12'15"
C5	42.50'	134.10'	85.00'	S 44°57'23" E	180°47'23"
C6	42.50'	133.81'	85.00'	N 45°26'10" E	180°23'30"
C7	285.00'	28.53'	28.51'	S 84°14'01" E	05°44'05"
C8	220.00'	51.86'	51.74'	S 52°47'28" E	13°30'24"
C9	18.00'	25.30'	22.74'	S 44°57'23" E	90°35'29"
C10	18.00'	28.34'	25.50'	N 45°26'10" E	90°11'36"
C11	220.00'	166.76'	162.79'	S 67°45'09" E	43°25'45"
C12	6.00'	10.22'	9.03'	N 02°46'35" E	97°37'44"
C13	70.00'	46.82'	45.76'	N 70°40'10" E	38°09'26"
C14	250.00'	196.35'	191.34'	S 68°32'16" E	45°00'00"
C15	100.00'	79.91'	77.80'	N 86°51'18" E	45°47'09"
C16	250.00'	189.50'	184.99'	S 67°45'09" E	43°25'45"
C17	42.50'	73.69'	64.80'	N 04°54'39" E	99°20'28"
C18	42.50'	72.04'	63.72'	S 03°07'11" E	97°07'00"
C19	42.50'	43.02'	41.21'	N 73°22'02" W	57°59'55"
C20	280.00'	109.24'	108.55'	S 78°17'25" E	22°21'14"
C21	280.00'	74.85'	74.63'	S 53°41'45" E	15°18'57"
C22	42.50'	44.25'	42.28'	N 74°28'44" E	59°39'36"
C23	220.00'	53.35'	53.22'	N 52°59'07" W	13°53'40"
C24	285.00'	22.90'	22.90'	N 64°47'56" W	04°38'15"
C25	285.00'	5.62'	5.62'	N 81°55'44" W	01°07'49"
C26	42.50'	17.10'	16.98'	S 86°06'27" W	23°03'07"
C27	42.50'	17.81'	17.68'	S 83°41'04" E	24°00'47"

LINE TABLE

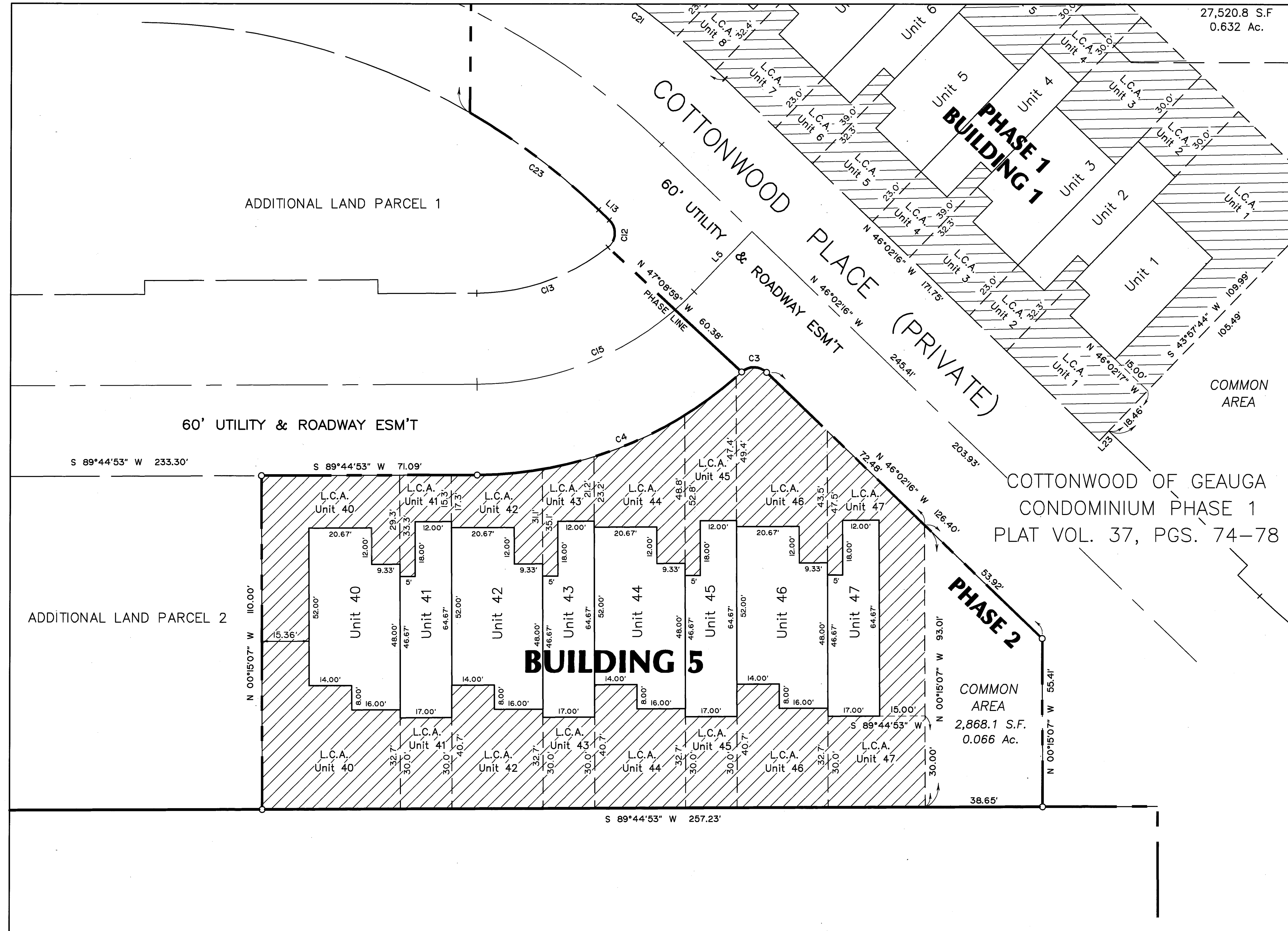
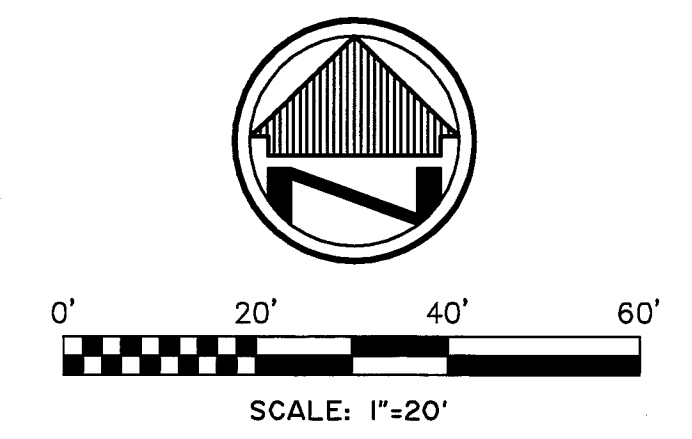
LINE	BEARING	DISTANCE
L1	N 00°15'07" W	19.54'
L2	S 89°44'53" W	37.87'
L3	N 00°15'07" W	55.41'
L4	N 00°15'06" E	3.76'
L5	S 43°57'44" W	27.50'
L6	S 38°19'19" W	20.70'
L7	S 36°15'38" E	20.45'
L8	N 90°00'00" W	41.92'
L9	S 59°04'11" W	79.42'
L10	N 90°00'00" W	3.98'
L11	N 90°00'00" W	82.96'
L12	N 00°31'58" E	89.57'
L13	N 46°02'17" W	4.91'
L14	N 89°44'53" E	4.50'
L15	S 89°28'02" E	77.00'
L16	N 00°31'58" E	4.50'
L17	S 89°28'02" E	6.55'
L18	N 00°15'07" W	4.50'
L19	N 89°44'53" E	77.00'
L20	N 00°15'07" E	4.50'
L21	N 46°02'16" W	10.00'
L22	N 43°57'43" E	4.50'
L23	S 43°57'44" W	4.50'
L24	S 27°55'48" W	5.00'
L25	N 23°34'52" E	5.00'

PHASE 2 = 0.656 Ac.
ADDITIONAL LAND (REMAINDER) = 5.942 Ac.
TOTAL = 6.598 Ac.

V.40 P.40

CONDOMINIUM DOMAIN
COTTONWOOD OF GEUGA CONDOMINIUM PHASE 2

STATE OF OHIO, COUNTY OF GEauga,
 MIDDLEFIELD VILLAGE, BEING PT. OF ORIGINAL
 MIDDLEFIELD TOWNSHIP LOT NOS. 23 & 28.



LEGEND

- CALCULATED DISTANCE OR ANGLE
- OBS. - OBSERVED DISTANCE OR ANGLE
- T.P.O.B. - TRUE PLACE OF BEGINNING
- P.O.B. - PLACE OF BEGINNING
- - MONUMENT BOX
- - MONUMENT FOUND, SIZE & TYPE AS INDICATED.
- - 5/8" REBAR, 30 INCHES IN LENGTH, WITH I.D. CAP C&A SET
- △ - P.K.(MASONRY) NAIL SET

LEGEND

L.C.A. - LIMITED COMMON AREA

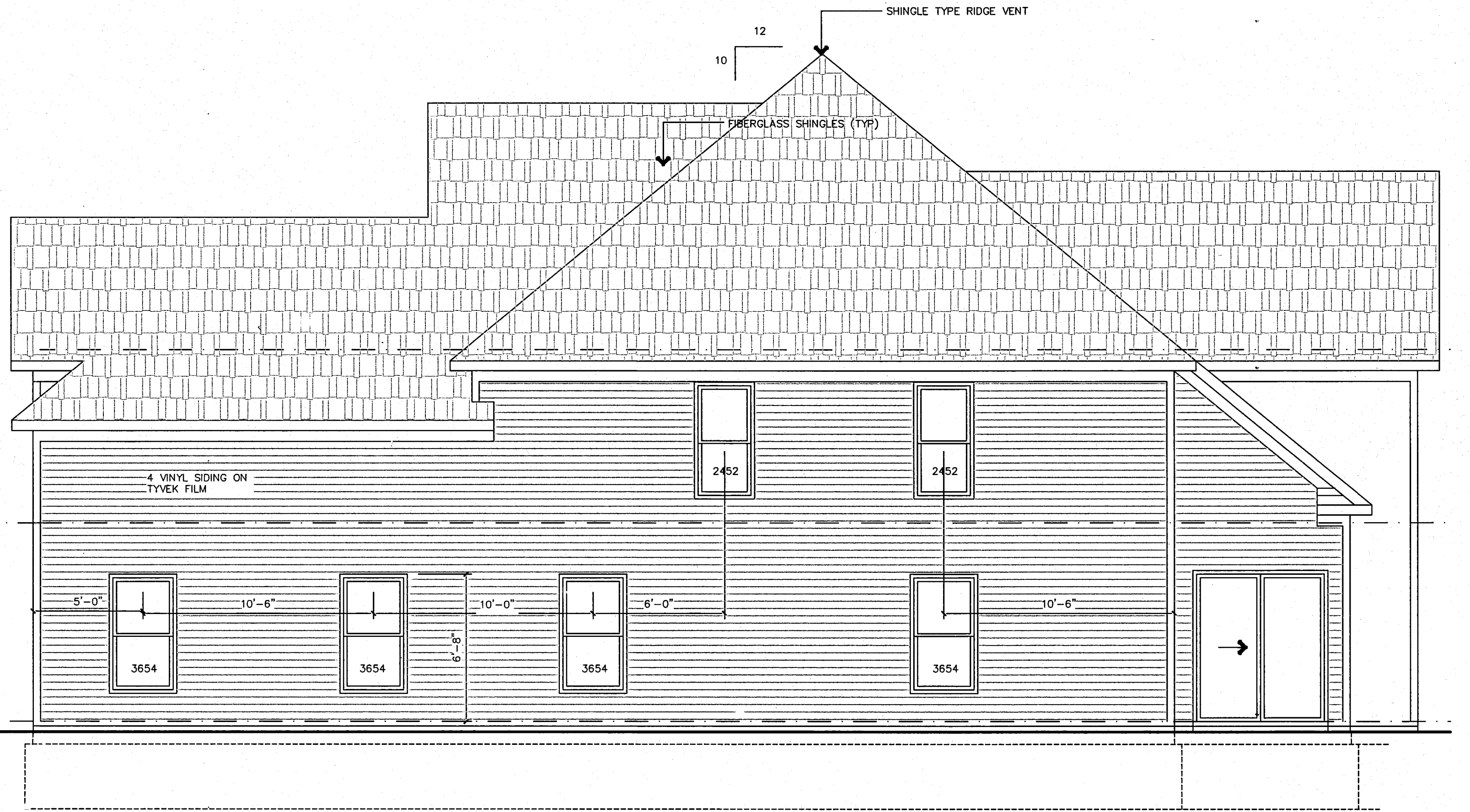
ELEVATION DATA

UNIT NO.	FIRST FLOOR ELEVATION	SECOND FLOOR ELEVATION	UPPER LEVEL CEILING ELEVATION
40	1191.00	1200.00	1208.00
41	1191.00	1200.00	1208.00
42	1191.00	1200.00	1208.00
43	1191.00	1200.00	1208.00
44	1191.00	1200.00	1208.00
45	1191.00	1200.00	1208.00
46	1191.00	1200.00	1208.00
47	1191.00	1200.00	1208.00

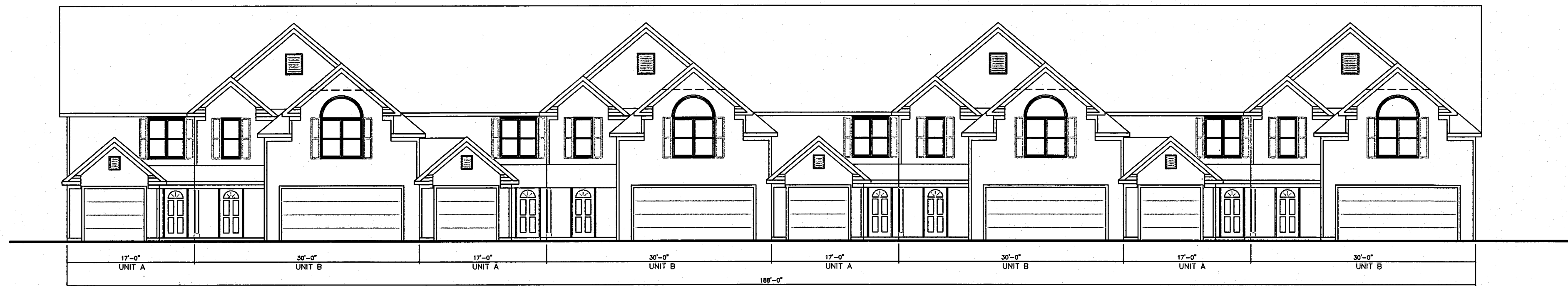
V.40 P.41



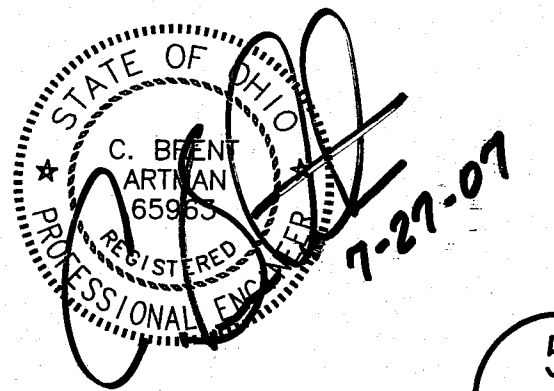
FRONT ELEVATION
SCALE: 1/4" = 1'-0"



RIGHT SIDE ELEVATION - UNIT B
SCALE: 1/4" = 1'-0"



FRONT ELEVATION - 4 UNIT BUILDING
SCALE: 3/32" = 1'-0"



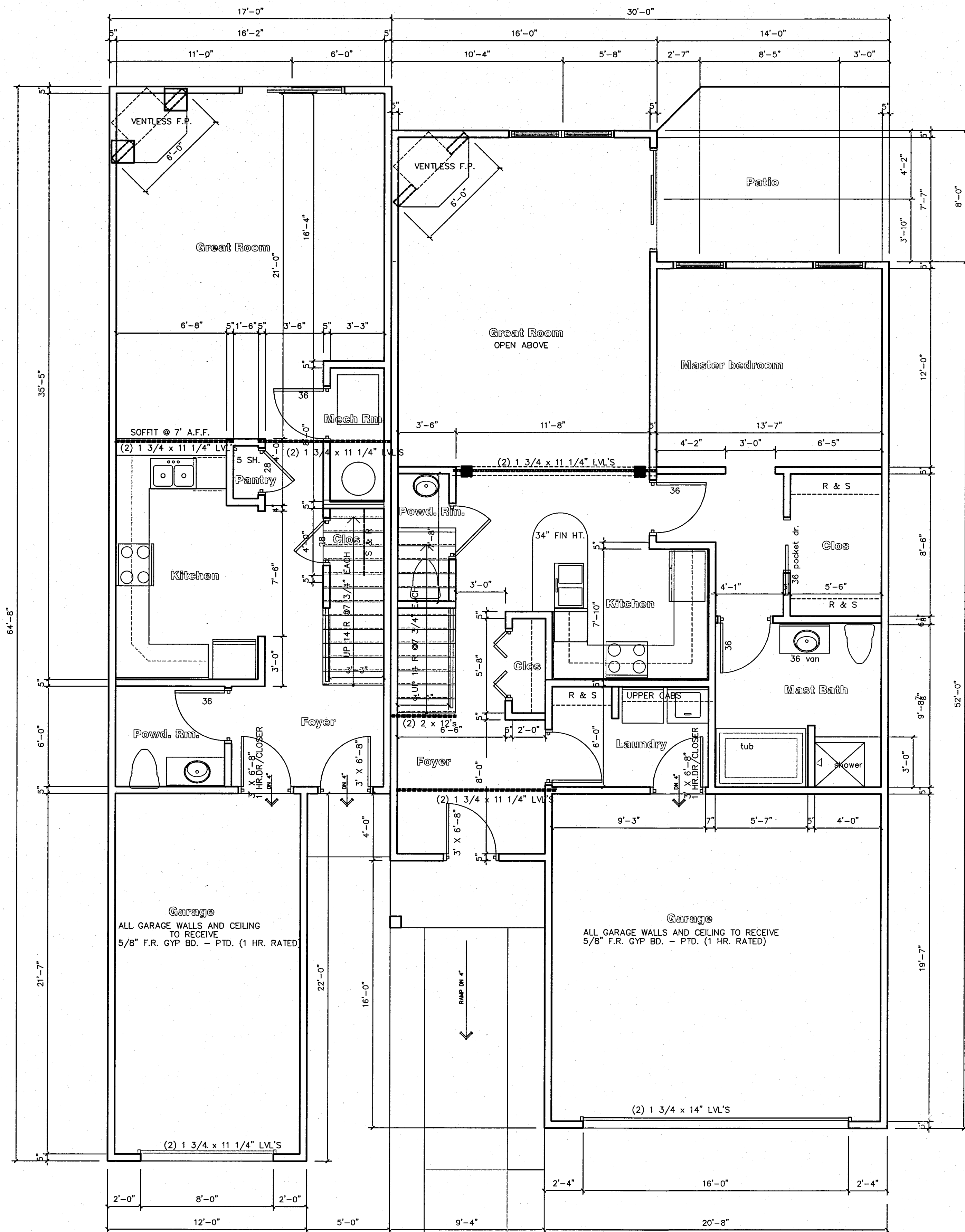
V.40 P.42

UNIT "A"
725 S.F.

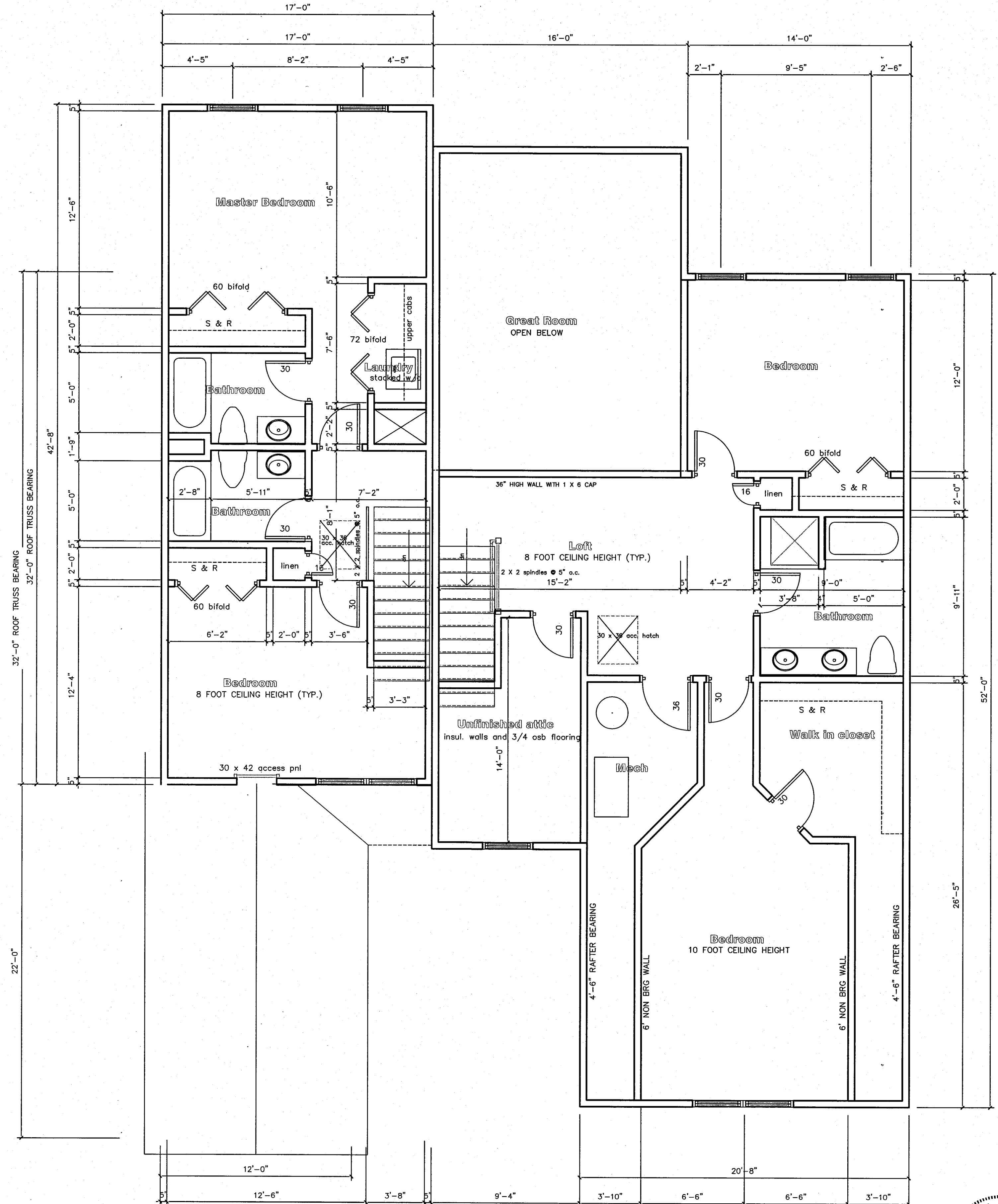
UNIT "B"
1,118 S.F.

UNIT "A"
725 S.F.

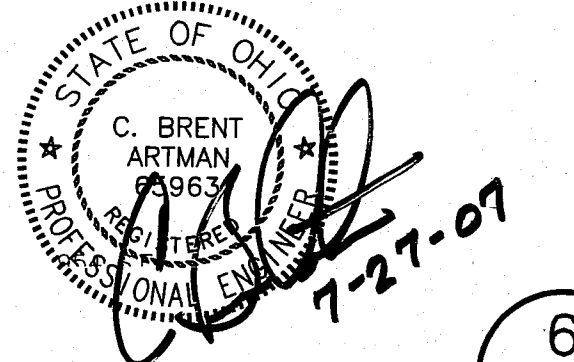
UNIT "B"
1,220 S.F.



FIRST FLOOR PLAN
SCALE: 1/4" = 1'-0"



SECOND FLOOR PLAN
SCALE: 1/4" = 1'-0"



V.40 P.43