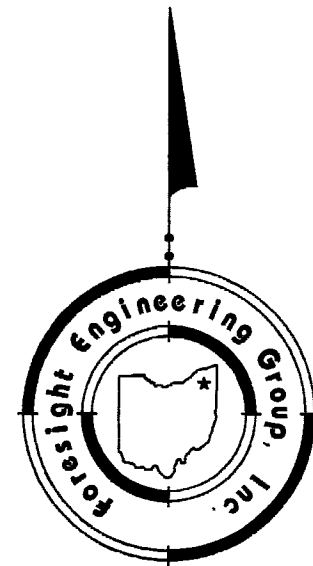
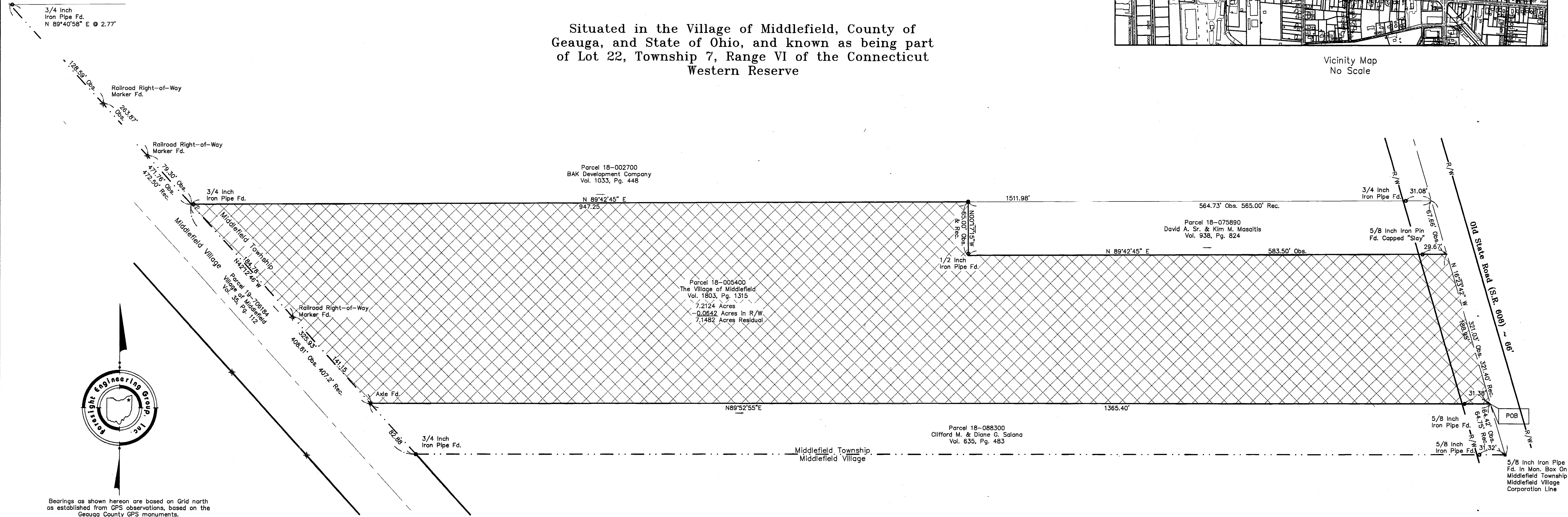
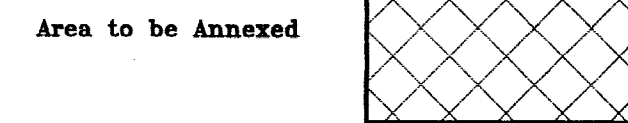
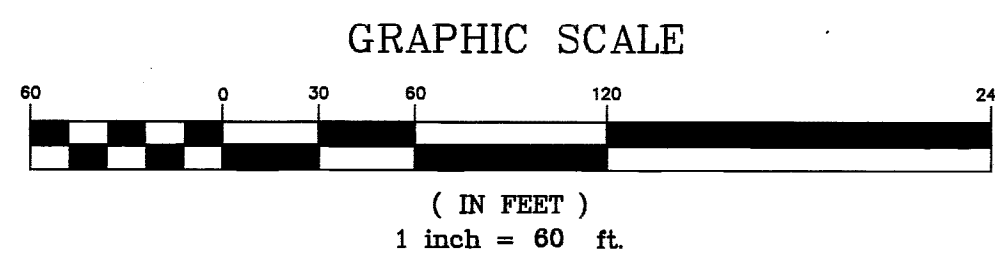


Vicinity Map  
 No Scale

Situated in the Village of Middlefield, County of Geauga, and State of Ohio, and known as being part of Lot 22, Township 7, Range VI of the Connecticut Western Reserve



Bearings as shown hereon are based on Grid north as established from GPS observations, based on the Geauga County GPS monuments.



References:

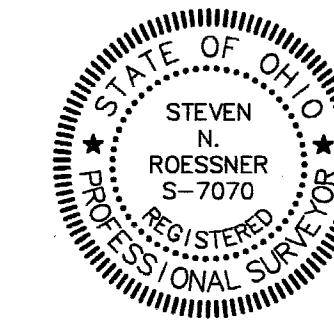
1. Geauga County GIS system.
2. Deeds as referenced by Volume and Page.

● = 5/8 inch rebar set, 30 inches long, capped "Foresight Eng."

This Plat was prepared without the benefit of an abstract of Title and is subject to any state of facts revealed by an examination of the same.

This Plat represents a Survey which meets the minimum standards for a Boundary Survey in The State of Ohio as specified in the Administrative Code Chapter 4723-37. Surveyed on July 12, 2006 by Foresight Engineering Group, Inc. Under the supervision of Steven N. Roessner, P.S. #7070

*Steven N. Roessner* 2/27/07  
 Steven N. Roessner, P.S. #7070  
 Foresight Engineering Group, Inc. Date



TRANSFERRED 3-13-'07  
 Tracy A. Quinn RK

Received for Record on 3.13.07 @ 3:33pm  
 in Plat Volume 40 Page 15.  
 Mary Margaret McBride  
 Geauga County Recorder

200700758151  
 Filed for Record in  
 GEAGA COUNTY, OHIO  
 MARY MARGARET MCBRIDE  
 03-13-2007 At 03:33 pm.  
 PLAT 40.00  
 OR Book 40 Page 15 - 15

V40.P15