

HIGHWAY RIGHT-OF-WAY ALTERATION PLAT FOR THE DEDICATION AND VACATION OF PORTIONS OF CAVES ROAD

BEING PART OF ORIGINAL LOT Nos. 23 and 24, Tract NO. 3
CHESTER TOWNSHIP, GEAUGA COUNTY, OHIO

I DO CERTIFY THE FOLLOWING:

- 1) THIS PLAT REPRESENTS A DEDICATION AND VACATION OF PORTIONS OF THE HIGHWAY EASEMENTS AND RIGHT-OF-WAY FOR CAVES ROAD PURSUANT TO SECTION 5553.06 OF THE OHIO REVISED CODE.
- 2) THE GEAUGA COUNTY BOARD OF COMMISSIONERS FOUND THE ACTION WOULD SERVE THE PUBLIC CONVENIENCE AND WELFARE BY RESOLUTION NO. 03-118, AND ORDERED THE RECORD OF THE DEDICATION PROCEEDINGS BE RECORDED IN THE PROPER ROAD RECORDS BY THE GEAUGA COUNTY ENGINEER BY RESOLUTION # 04-222.
- 3) THE NEW RIGHT-OF-WAY AREA WAS SECURED BY DEED RECORDED IN THE GEAUGA COUNTY OFFICIAL RECORDS VOLUME 1654, PAGE 284 AS DENOTED ON SHEET 2 OF THIS PLAT. THE PARCEL TO BE DEDICATED FOR HIGHWAY PURPOSES IS DENOTED ON SHEET 2 OF THIS PLAT. THE RIGHT OF WAY TO BE VACATED IS DENOTED ON SHEET 2 WITH VACATED AREAS TO ABUTTING PARCELS DEPICTED ON SHEET 2 OF THIS PLAT. THE AREAS OF THE EXISTING HIGHWAY EASEMENT NO LONGER NEEDED AND VACATED TO THE ABUTTING OWNERS IS DENOTED ON SHEET 2.

INDEX OF SHEETS

TITLE SHEET	1
ROAD RIGHT OF WAY PLAT	2
DEDICATION PLAT	2
VACATION PLAT	2
VACATION TO ABUTTING PARCELS	2
RIGHT OF WAY PASSED TO ABUTTING PARCELS	2

ATTEST Robert L. Phillips 12-9-04
ROBERT L. PHILLIPS, GEAUGA COUNTY ENGINEER DATE

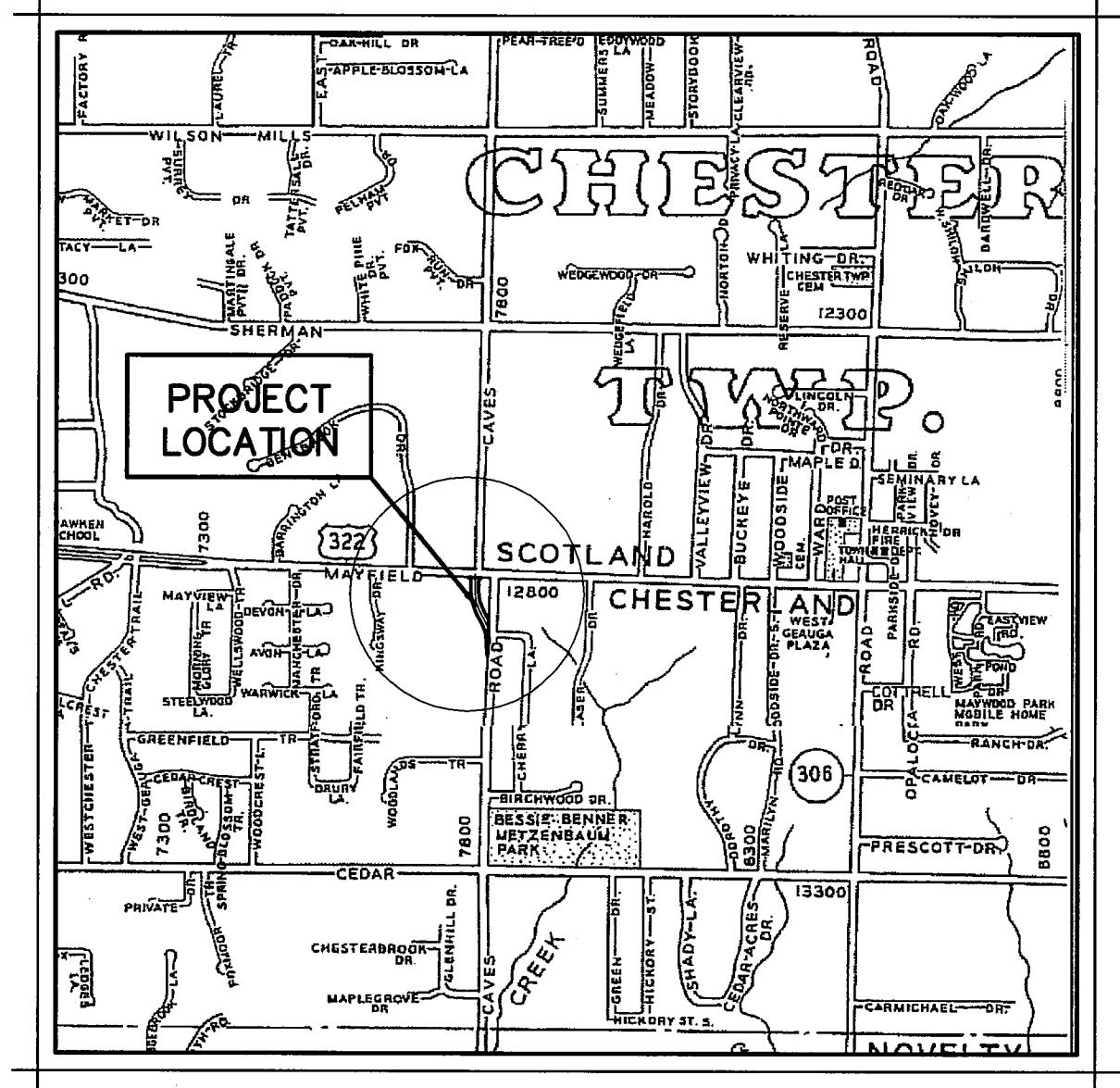
APPROVED THIS 9th DAY OF December, 2004.
Stacey Reid
STACEY REID, ASSISTANT PROSECUTING ATTORNEY

THE GEAUGA COUNTY BOARD OF COMMISSIONERS HEREBY ACCEPTS THIS PLAT.

ACCEPTED THIS 14 DAY OF December, 2004.
Mary E. Samide
MARY E. SAMIDE

William S. Young
Neil C. Hofstetter
NEIL C. HOFSTETTER

ATTEST: I, CLAUDINE KOZENKO, CLERK OF THE BOARD OF COUNTY COMMISSIONERS GEAUGA COUNTY, OHIO CERTIFY THAT THE FOREGOING IS A TRUE AND CORRECT COPY OF A RESOLUTION ADOPTED AT A LEGALLY CONVENED BOARD MEETING HELD ON December 14, 2004.
Claudine Kozenko
CLAUDINE KOZENKO, CLERK



N. T. S
LOCATION MAP

NO TRANSFER ^{NECESSARY} THIS 8th DAY OF February, 2005.

Tracy A. Jamison
TRACY JEMISON, GEAUGA COUNTY AUDITOR

RECEIVED FOR RECORD THIS 8th DAY OF February, 2005.

Mary Margaret McBride
MARY M. MCBRIDE, GEAUGA COUNTY RECORDER

RECORDED THIS 8th DAY OF February, 2005 IN VOLUME 37, PAGE 110-111 OF THE GEAUGA COUNTY BOOK OF PLATS.

Mary Margaret McBride
MARY M. MCBRIDE, GEAUGA COUNTY RECORDER

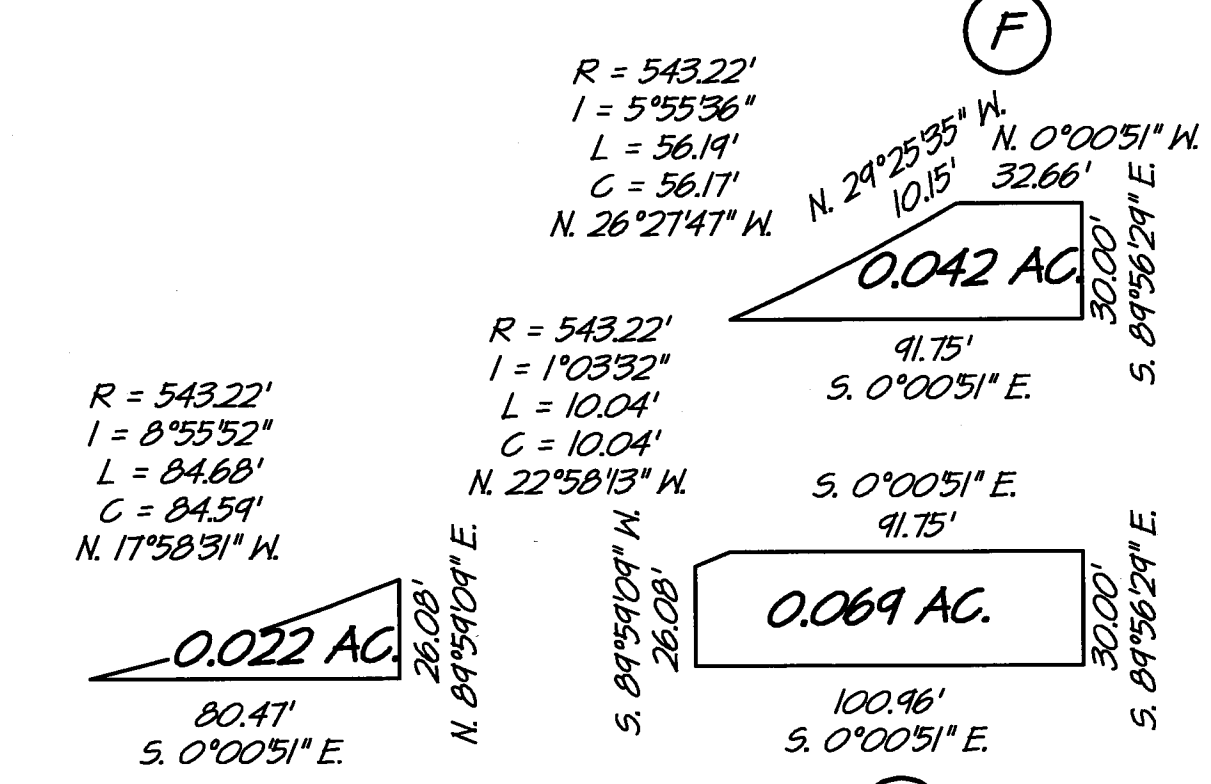
200500711945
Filed for Record in
GEAUGA COUNTY, OHIO
MARY MARGARET MCBRIDE
02-08-2005 at 10:59 am.
COUNTY PLAT
OR Book 37 Page 110 - 111

V37-P110

H:\2004\04229\SURVEY\Caves Road Vacation\Fgl.dwg 12/7/2004 3:06:55 PM EST

ROBERT A. & LILLIAN M. HORTON
O.R. VOL. 1754 PG. 871
ID No. 11-389252

MAYFIELD UNITED METHODIST CHURCH
August 19, 2002
O.R. Vol. 1508 Pg. 673
ID No. 11-211500



THOMAS M. & TINA M. SAPANARO
NOV 8, 1993
O.R. VOL. 960, PG. 756
ID No. 11-218000

ROBERT A. & LILLIAN M. HORTON
D.B. VOL. 378, PG. 454
& O.R. VOL. PG.
ID No. 11-147000

CAVES ROAD, L L C
MAR 31, 2000
O.R. VOL. 1288, PG. 373
ID No. 11-199600

MICHAEL H. MARINO
JAN. 29, 1999
O.R. VOL. 1214, PG. 465
ID No. 11-349300

② CURVE DATA
P.I. Sta. 113+34.61
R = 498.22'
I = 24°24'43"
L = 236.75'
C = 234.52'
N. 15°48'47\"/>

② CURVE DATA
P.I. Sta. 104+37.72
R = 498.22'
I = 24°24'43"
L = 236.75'
C = 234.52'
N. 15°48'47\"/>

PORTIONS OF RIGHT-OF-WAY
VACATED TO ADJUTING PARCELS

LEGEND
D.B. = Deed Book
O.R. = Official Records
IP = Iron Pin Stake

ORIG. LOT No 23
ORIG. LOT No 24

CERTIFICATION

I HEREBY CERTIFY THAT THE PREPARATION OF THIS PLAT WAS COMPLETED USING THE SURVEY CENTERLINE DATA AVAILABLE AT THE OFFICE OF THE GEauga COUNTY ENGINEER IN MARCH OF THE YEAR 2004. DIMENSIONS SHOWN ARE EXPRESSED IN FEET AND DECIMAL PARTS THEREOF; BEARINGS SHOWN HEREON ARE BASED UPON THOSE CONTAINED ON PLANS FOR THE RELOCATION OF CAVES ROAD AND IN DEED RECORDED IN VOLUME 1654, PAGE 284 OF THE GEauga COUNTY RECORDS, ALL OF WHICH I CERTIFY CORRECT TO THE BEST OF MY KNOWLEDGE AND BELIEF.

Clyde C. Hadden 12-7-04
CLYDE C. HADDEN DATE
OHIO P.S. NO. 7791



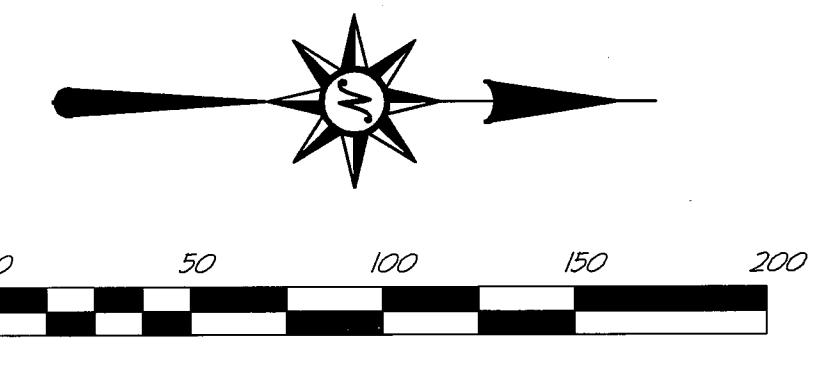
CHERRY LANE 60'
N. 89°58'29\"/>

S/L 3
CATHY L. FORCE
JUN 17, 2002
O.R. VOL. 1480 PG. 405
ID No. 11-083000

S/L 2
THOMAS M. & TINA M. SAPANARO
NOV 8, 1993
O.R. VOL. 960, PG. 756
ID No. 11-218000

S/L 1
ROBERT A. & LILLIAN M. HORTON
D.B. VOL. 378 PG. 454
ID No. 11-147000

CHESTER ESTATES
SUBDIVISION NO. 1
VOL. 7, PG. 32
GEauga COUNTY PLATS



AREAS IN CAVES ROAD

VACATION 0.714 OF AN ACRE
DEDICATION 1.3986 Acres

V37-P111

H:\2004\04229\SURVEY\Caves Road Vacation Pg2.dwg 12/7/2004 3:07:41 PM EST

CT Consultants
engineers | architects | planners
35000 Kaiser Court Willoughby, Ohio 44094
440.951.9000 www.ctconsultants.com

REV. NO.	DESCRIPTION	DATE	BY	CHK'D.

DATE: JULY 2004
DRAWN BY: RB
CHECKED BY: TPH
APPROVED BY: CCH
F.B. No. 847 PG. 58

PLAT OF VACATION AND DEDICATION
OF A PART OF CAVES ROAD BEING PARTS OF ORIGINAL CHESTER TOWNSHIP LOTS 23 & 24, TRACT 3 GEauga COUNTY - OHIO

SCALE	
HOR. 1" = 50'	VERT. N/A
CONTRACT No. 04229	
SHEET NO. 2	OF 2