

EXHIBIT A

DECLARATION OF CONDOMINIUM FOR THE WOODS AT AUBURN LAKES

SITUATED IN THE TOWNSHIP OF AUBURN, COUNTY OF GEauga AND STATE OF OHIO, AND KNOWN AS BEING PART OF ORIGINAL AUBURN TOWNSHIP SECTION ONE, TRACT TWO AND CONTAINING 83.986 AC.

Table with columns: LGND, AMENDMENT, DATE, RLD# NO, VOL. NO. and LGND, AMENDMENT, DATE, RLD# NO, VOL. NO. listing various amendments from 1 to 66.

Large table with columns: NUMBER, RADII, CENTRAL ANGLE, ARC, TAN, CHORD, CHORD BEARINGS. It lists numerous survey points and bearings.

2002063444B Filed for Record in GEauga COUNTY, OHIO MARY MARGARET MCBRIDE 08-05-2002 At 11:32 AM, PLAT 100.00 OR Book 35 Page 47 - 51

RECEIVED FOR RECORD THIS DAY OF August 2002 AT 11:32 AM AND RECORDED IN VOLUME 35, PAGE 47-51 OF GEauga COUNTY RECORDS OF PLATS

Mary Margaret McBride MARY MARGARET MCBRIDE, RECORDER

I DO HEREBY CERTIFY THESE DRAWINGS SHOW GRAPHICALLY ALL PARTICULARS OF BUILDING 585-586 AS THE DECLARATION OF CONDOMINIUM FOR THE WOODS AT AUBURN LAKES, INCLUDING THE LAYOUT, LOCATION, DESIGNATION AND DIMENSIONS OF EACH FAMILY UNIT AND BUILDING AS CONSTRUCTED.



STEVEN J. LESSMAN, PROFESSIONAL SURVEYOR NO. 7078

DECLARATION OF CONDOMINIUM FOR THE WOODS AT AUBURN LAKES

BUILDING 585-586

AS NOTED JUL 2002 SHEET 1 OF 5

LESSMAN, BENDER & ASSOCIATES Engineers - Surveyors - Planners

Village Station 401 South Street Chardon Ohio 44024 Phone: (440) 286-7204 Fax: (440) 286-3335

V35.P47

EXHIBIT A
**DECLARATION OF CONDOMINIUM FOR
THE WOODS AT AUBURN LAKES**

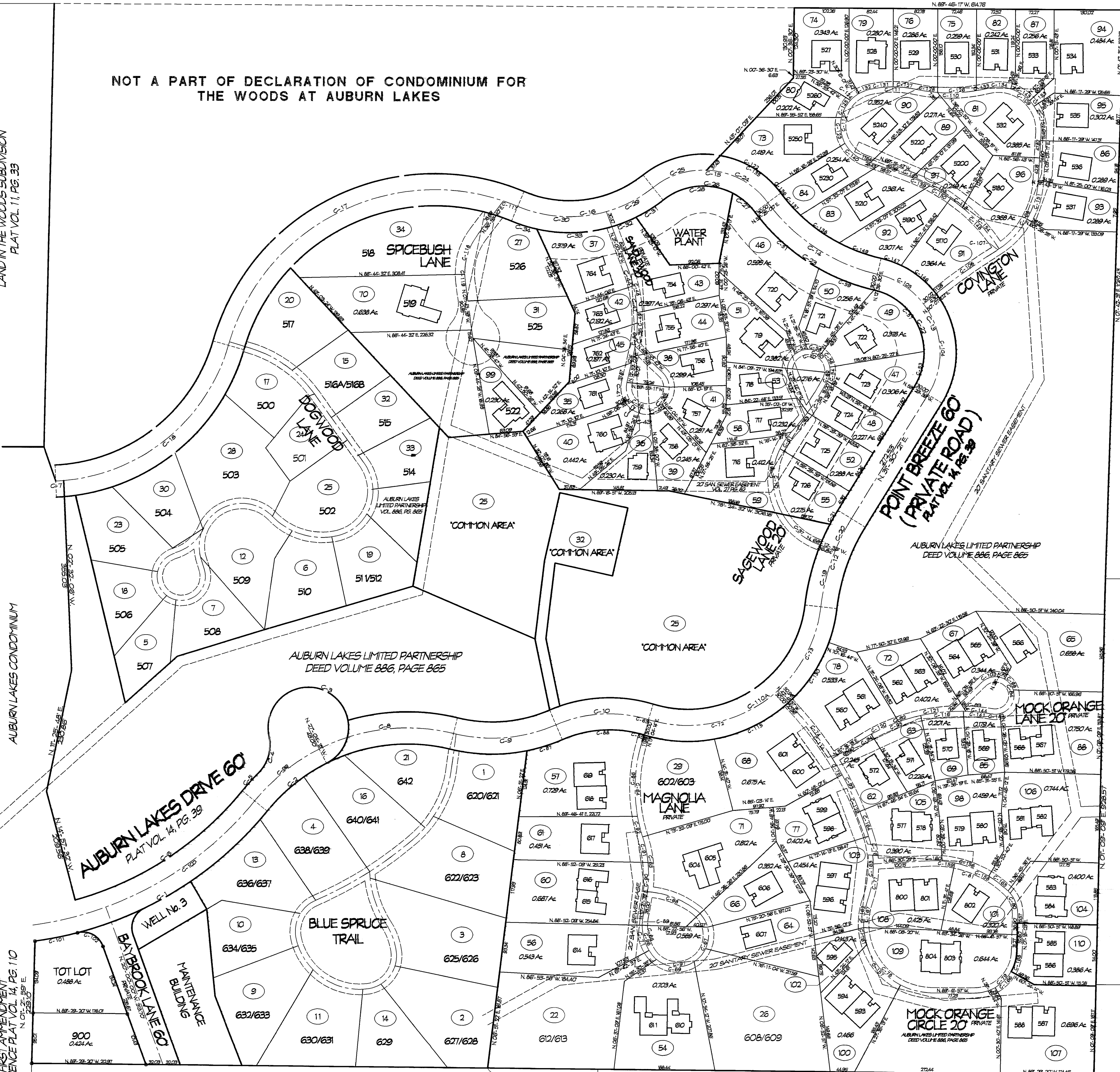
SITUATED IN THE TOWNSHIP OF AUBURN, COUNTY OF GEauga AND
STATE OF OHIO, AND KNOWN AS BEING PART OF ORIGINAL AUBURN
TOWNSHIP SECTION ONE, TRACT TWO AND CONTAINING 83.986 AC.

NOT A PART OF DECLARATION OF CONDOMINIUM FOR
THE WOODS AT AUBURN LAKES

LAND IN THE WOODS SUBDIVISION
PLAT VOL. 11, PG. 33

AUBURN LAKES CONDOMINIUM

AUBURN LAKES CONDOMINIUM
FIRST AMENDMENT
REFERENCE PLAT VOL. 14, PG. 110



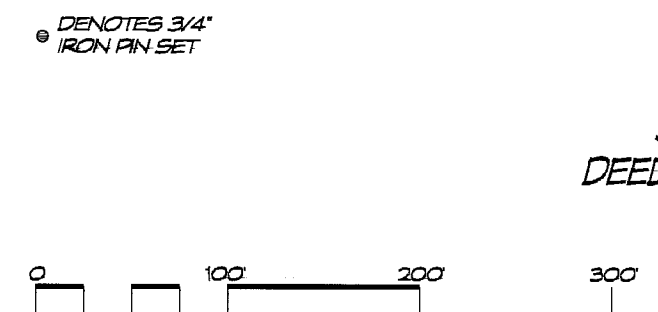
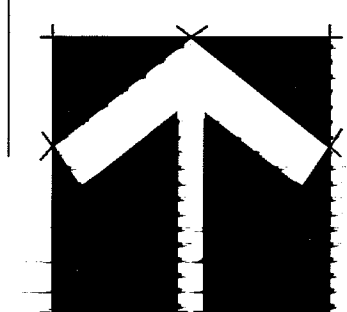
AUBURN INDUSTRIAL PARK
PARTNERSHIP I
DEED VOL. 647, PG. 663

THE QUEENS DEVELOPMENT CO.
DEED VOL. 1005, PG. 1142

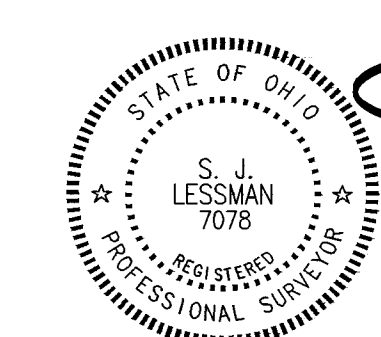
RL & J.F. SIMPSON
DEED VOL. 91, PG. 698

J. P. WEINGART
DEED VOL. 800, PG. 919

J. FEHER ET AL.
DEED VOL. 863, PG. 125



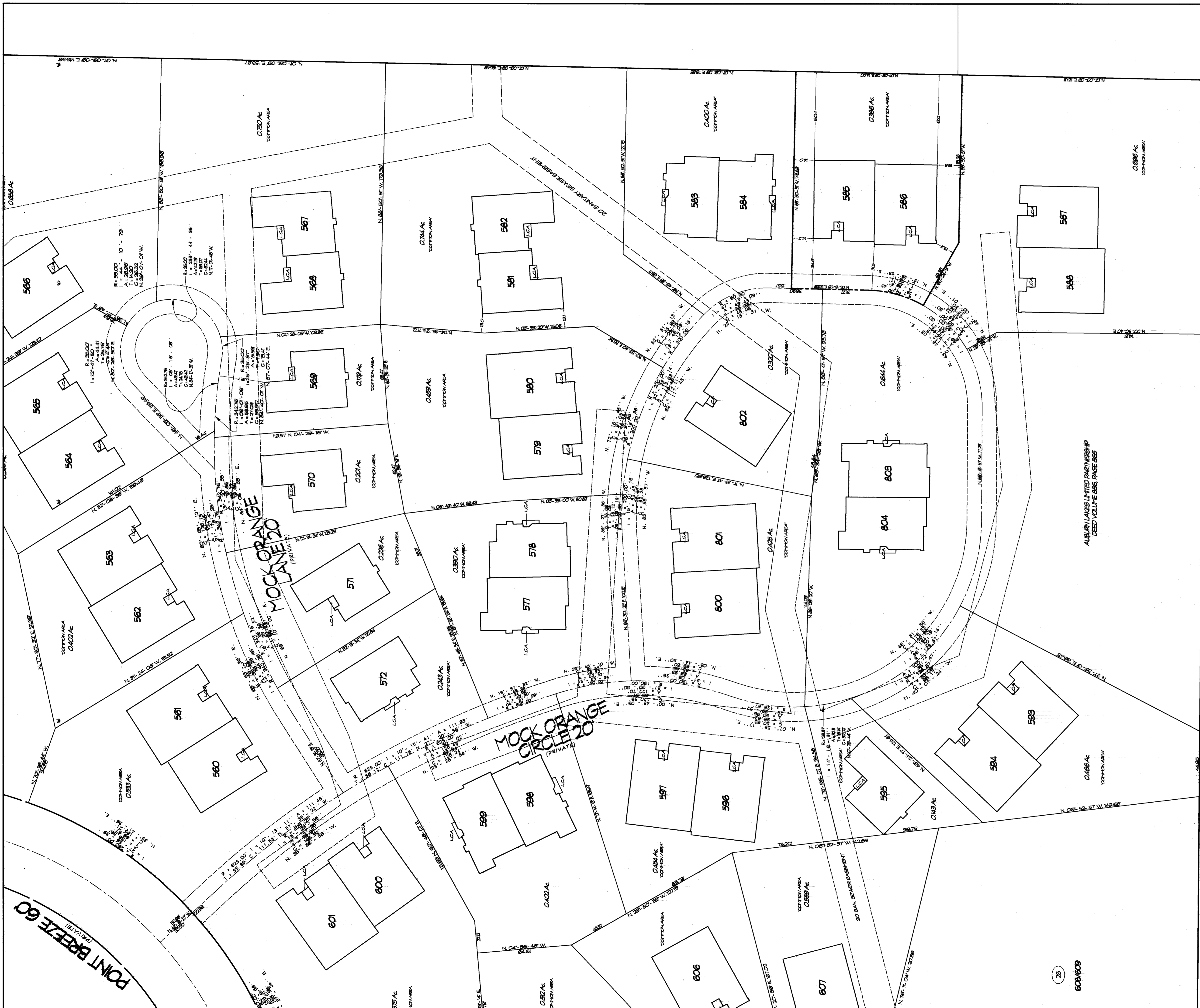
V35-P48



I DO HEREBY CERTIFY THESE DRAWINGS SHOW
GRAPHICALLY ALL PARTICULARS OF BUILDING
585-586 OF THE DECLARATION OF CONDOMINIUM FOR
THE WOODS AT AUBURN LAKES, INCLUDING THE
LAYOUT, LOCATION, DESIGNATION AND
DIMENSIONS OF EACH FAMILY UNIT AND BUILDING
AS CONSTRUCTED.

STEVEN J. LESSMAN, PROFESSIONAL SURVEYOR NO. 7078

EXHIBIT 'A'
DECLARATION OF CONDOMINIUM FOR THE
WOODS AT AUBURN LAKES
MASTER SITE PLAN
SCALE: 1" = 100' JUL. 2002 SHEET 2 OF 5
LESSMAN, BENDER & ASSOCIATES
Engineers - Surveyors - Planners
Village Station 401 South Street Chardon Ohio 44024
Phone: (440) 286-7204 Fax: (440) 286-3335



J. FEHER ET AL
DEED VOL. 863 PG. 125

NOTE:
L.C.A. DENOTES 'LIMITED COMMON AREA' FOR FIRST FLOOR ONLY.
ALL LAND NOT OCCUPIED BY BUILDINGS DESIGNATED AS
'LIMITED COMMON AREA' IS 'COMMON AREA'.

V35-P49

I DO HEREBY CERTIFY THESE DRAWINGS SHOW GRAPHICALLY ALL PARTICULARS OF BUILDING 585-586 OF THE DECLARATION OF CONDOMINIUM FOR THE WOODS AT AUBURN LAKES, INCLUDING THE LAYOUT, LOCATION, DESIGNATION AND DIMENSIONS OF EACH FAMILY UNIT AND BUILDING AS CONSTRUCTED.

[Signature]

STEVEN J. LESSMAN, PROFESSIONAL SURVEYOR No. 7078



EXHIBIT 'A'

DECLARATION OF CONDOMINIUM FOR THE WOODS AT AUBURN LAKES

BUILDING 585-586

MASTER SITE PLAN

SCALE: 1" = 30' JUL. 2002 SHEET 3 OF 5

LESSMAN, BENDER & ASSOCIATES
Engineers - Surveyors - Planners

Village Station 401 South Street Chardon Ohio 44024
Phone: (440) 286-7204 Fax: (440) 286-3335

STATE OF OHIO
 PROFESSIONAL SURVEYORS
 STEVEN J. LESSMAN
 No. 7078
 Commission Expires 12/31/2008
 BUREAU OF REVENUE
 STATE OF OHIO
 DEPARTMENT OF REVENUE
 150 EAST BROADWAY
 COLUMBUS, OHIO 43260-1173
 (614) 467-3300
 (614) 467-3301
 (614) 467-3302
 (614) 467-3303
 (614) 467-3304
 (614) 467-3305
 (614) 467-3306
 (614) 467-3307
 (614) 467-3308
 (614) 467-3309
 (614) 467-3310
 (614) 467-3311
 (614) 467-3312
 (614) 467-3313
 (614) 467-3314
 (614) 467-3315
 (614) 467-3316
 (614) 467-3317
 (614) 467-3318
 (614) 467-3319
 (614) 467-3320
 (614) 467-3321
 (614) 467-3322
 (614) 467-3323
 (614) 467-3324
 (614) 467-3325
 (614) 467-3326
 (614) 467-3327
 (614) 467-3328
 (614) 467-3329
 (614) 467-3330
 (614) 467-3331
 (614) 467-3332
 (614) 467-3333
 (614) 467-3334
 (614) 467-3335
 (614) 467-3336
 (614) 467-3337
 (614) 467-3338
 (614) 467-3339
 (614) 467-3340
 (614) 467-3341
 (614) 467-3342
 (614) 467-3343
 (614) 467-3344
 (614) 467-3345
 (614) 467-3346
 (614) 467-3347
 (614) 467-3348
 (614) 467-3349
 (614) 467-3350
 (614) 467-3351
 (614) 467-3352
 (614) 467-3353
 (614) 467-3354
 (614) 467-3355
 (614) 467-3356
 (614) 467-3357
 (614) 467-3358
 (614) 467-3359
 (614) 467-3360
 (614) 467-3361
 (614) 467-3362
 (614) 467-3363
 (614) 467-3364
 (614) 467-3365
 (614) 467-3366
 (614) 467-3367
 (614) 467-3368
 (614) 467-3369
 (614) 467-3370
 (614) 467-3371
 (614) 467-3372
 (614) 467-3373
 (614) 467-3374
 (614) 467-3375
 (614) 467-3376
 (614) 467-3377
 (614) 467-3378
 (614) 467-3379
 (614) 467-3380
 (614) 467-3381
 (614) 467-3382
 (614) 467-3383
 (614) 467-3384
 (614) 467-3385
 (614) 467-3386
 (614) 467-3387
 (614) 467-3388
 (614) 467-3389
 (614) 467-3390
 (614) 467-3391
 (614) 467-3392
 (614) 467-3393
 (614) 467-3394
 (614) 467-3395
 (614) 467-3396
 (614) 467-3397
 (614) 467-3398
 (614) 467-3399
 (614) 467-3400



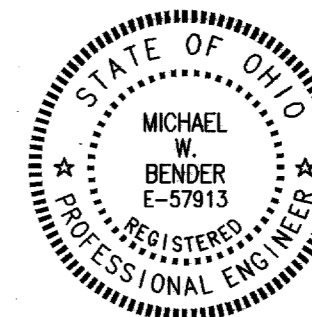
FOUNDATION PLAN
1/4" = 1'-0"

V35.P50

WE DO HEREBY CERTIFY THESE DRAWINGS SHOW GRAPHICALLY ALL PARTICULARS OF BUILDING 585-586 OF THE DECLARATION OF CONDOMINIUM FOR THE WOODS AT AUBURN LAKES, INCLUDING THE LAYOUT, LOCATION, DESIGNATION AND DIMENSIONS OF EACH FAMILY UNIT AND BUILDING AS CONSTRUCTED.



STEVEN J. LESSMAN, PROFESSIONAL SURVEYOR NO. 7078

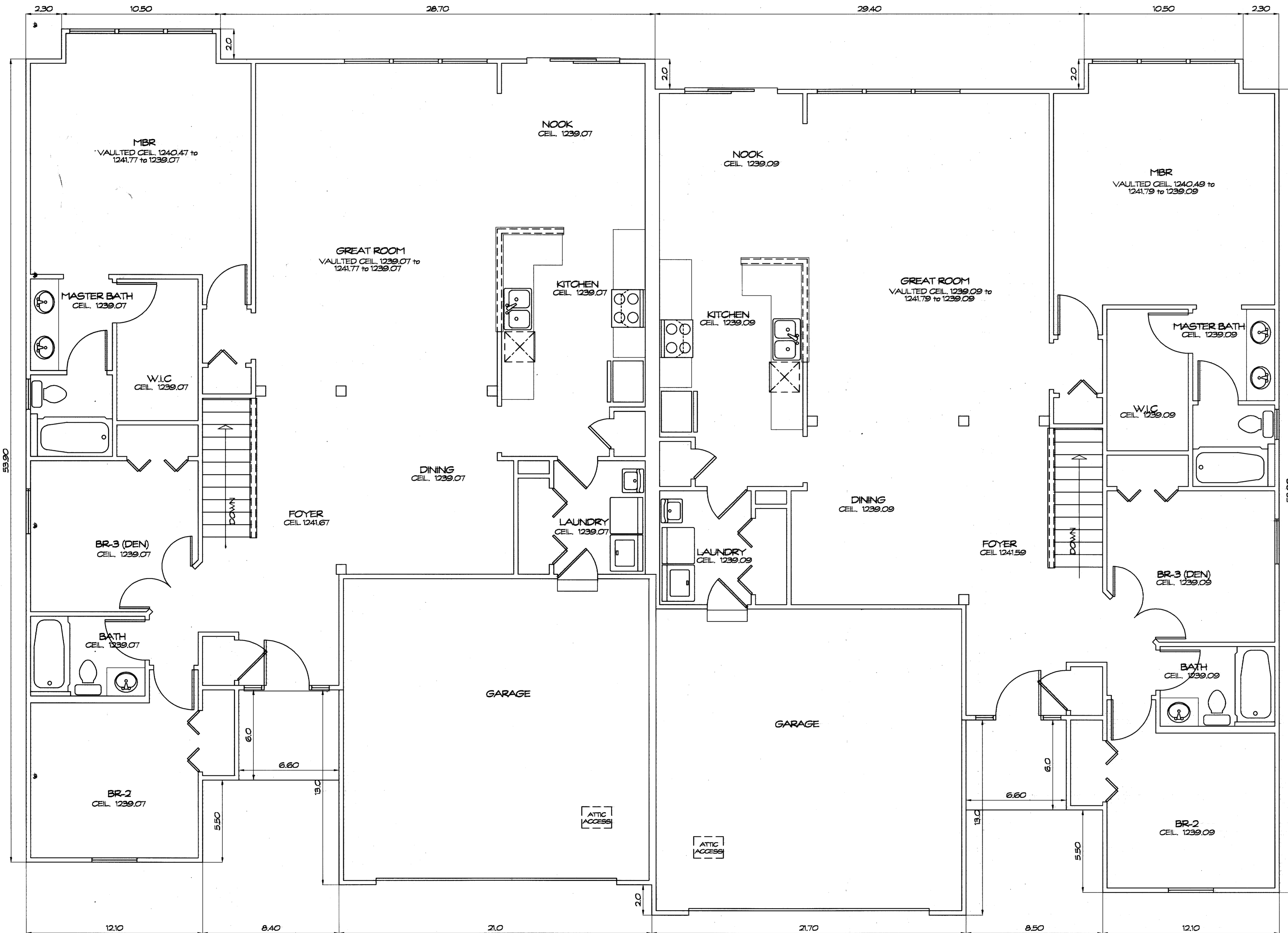


Michael W. Bender
MICHAEL W. BENDER, PROFESSIONAL ENGINEER NO. E-57913

EXHIBIT 'A'
DECLARATION OF CONDOMINIUM FOR THE WOODS AT AUBURN LAKES
UNIT 585-586
SCALE: 1/4" = 1'-0" JUL. 2002 SHEET 4 OF 5
LESSMAN, BENDER & ASSOCIATES
Engineers - Surveyors - Planners
Village Station 401 South Street Canton Ohio 44024
Phone: (440) 286-7284 Fax: (440) 286-3333

SWIPE PRODUCTS • NEW HORIZONS MINNESOTA
 REGISTERED BY PART NUMBER 8558
 PARTIAL COPY OF PLAN ON THIS LINE
 SWIPE PRODUCTS • NEW HORIZONS MINNESOTA
 REGISTERED BY PART NUMBER 8558
 PARTIAL COPY OF PLAN ON THIS LINE
 SWIPE PRODUCTS • NEW HORIZONS MINNESOTA
 REGISTERED BY PART NUMBER 8558
 PARTIAL COPY OF PLAN ON THIS LINE

UNIT	GARAGE ELEV. FLOOR	GARAGE ELEV. CEILING	SQ. FT.	BASEMENT ELEV. FLOOR	BASEMENT ELEV. CEILING	SQ. FT.	1ST FLOOR ELEV. FLOOR	1ST FLOOR ELEV. CEILING	SQ. FT.	TOTAL SQ. FT.
585	1228.81	1239.11	435	1222.04	1229.84	1788	1231.07	See Plan	1809	4032
586	1228.88	1239.08	448	1222.11	1229.81	1814	1231.09	See Plan	1835	4098



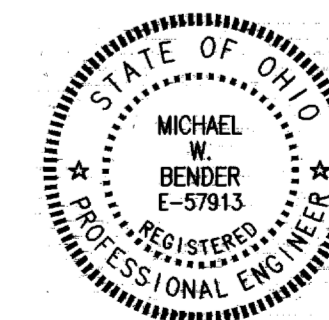
FIRST FLOOR PLAN
1/4" = 1'-0"

V35.P51

WE DO HEREBY CERTIFY THESE DRAWINGS SHOW GRAPHICALLY ALL PARTICULARS OF BUILDING 585-586 OF THE DECLARATION OF CONDOMINIUM FOR THE WOODS AT AUBURN LAKES, INCLUDING THE LAYOUT, LOCATION, DESIGNATION AND DIMENSIONS OF EACH FAMILY UNIT AND BUILDING AS CONSTRUCTED.



STEVEN J. LESSMAN, PROFESSIONAL SURVEYOR NO. 7078



MICHAEL W. BENDER, PROFESSIONAL ENGINEER NO. E-57913

EXHIBIT 'A'
DECLARATION OF CONDOMINIUM FOR THE WOODS AT AUBURN LAKES
UNIT 585-586
SCALE: 1/4" = 1'-0" JUL 2002 SHEET 5 OF 5
LESSMAN, BENDER & ASSOCIATES
Engineers - Surveyors - Planners
Village Station 401 South Street Chardon Ohio 44024
Phone: (440) 286-7204 Fax: (440) 286-3335