

EXHIBIT A

DECLARATION OF CONDOMINIUM FOR THE WOODS AT AUBURN LAKES

SITUATED IN THE TOWNSHIP OF AUBURN, COUNTY OF GEauga AND STATE OF OHIO, AND KNOWN AS BEING PART OF ORIGINAL AUBURN TOWNSHIP SECTION ONE, TRACT TWO AND CONTAINING 83.986 AC.

Table with 4 columns: LGND, AMENDMENT, DATE, S/D# NO., VOL. NO. Lists amendments 1 through 43.

Table with 4 columns: LGND, AMENDMENT, DATE, S/D# NO., VOL. NO. Lists amendments 44 through 86.

Table with 4 columns: LGND, AMENDMENT, DATE, S/D# NO., VOL. NO. Lists amendments 87 through 106.

Large table with columns: NUMBER, RADIUS, CENTRAL ANGLE, ARC, TAN, CHORD, CHORD BEARINGS. Contains detailed survey data for various lots.

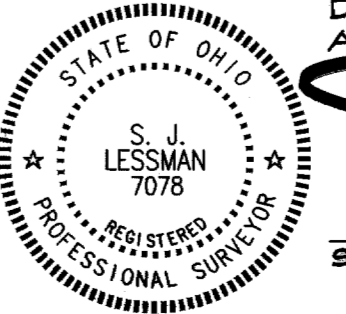
V35.P1

200200627201 Filed for Record in Geauga County, Ohio...

RECEIVED FOR RECORD THIS 2nd DAY OF May 2002...

Mary Margaret McBride, Recorder

I DO HEREBY CERTIFY THESE DRAWINGS SHOW GRAPHICALLY ALL PARTICULARS OF BUILDING...



STEVEN J. LESSMAN, PROFESSIONAL SURVEYOR NO. 7078

LESSMAN, BENDER & ASSOCIATES Engineers - Surveyors - Planners. Includes address and phone numbers.

METRO-MACHINE & TOOL COMPANY
DEED VOL. 443, PG. 949

EXHIBIT A
DECLARATION OF CONDOMINIUM FOR
THE WOODS AT AUBURN LAKES

SITUATED IN THE TOWNSHIP OF AUBURN, COUNTY OF GEauga AND STATE OF OHIO, AND KNOWN AS BEING PART OF ORIGINAL AUBURN TOWNSHIP SECTION ONE, TRACT TWO AND CONTAINING 83.986 AC.

NOT A PART OF DECLARATION OF CONDOMINIUM FOR
THE WOODS AT AUBURN LAKES

LAND IN THE WOODS SUBDIVISION
PLAT VOL. 11, PG. 33

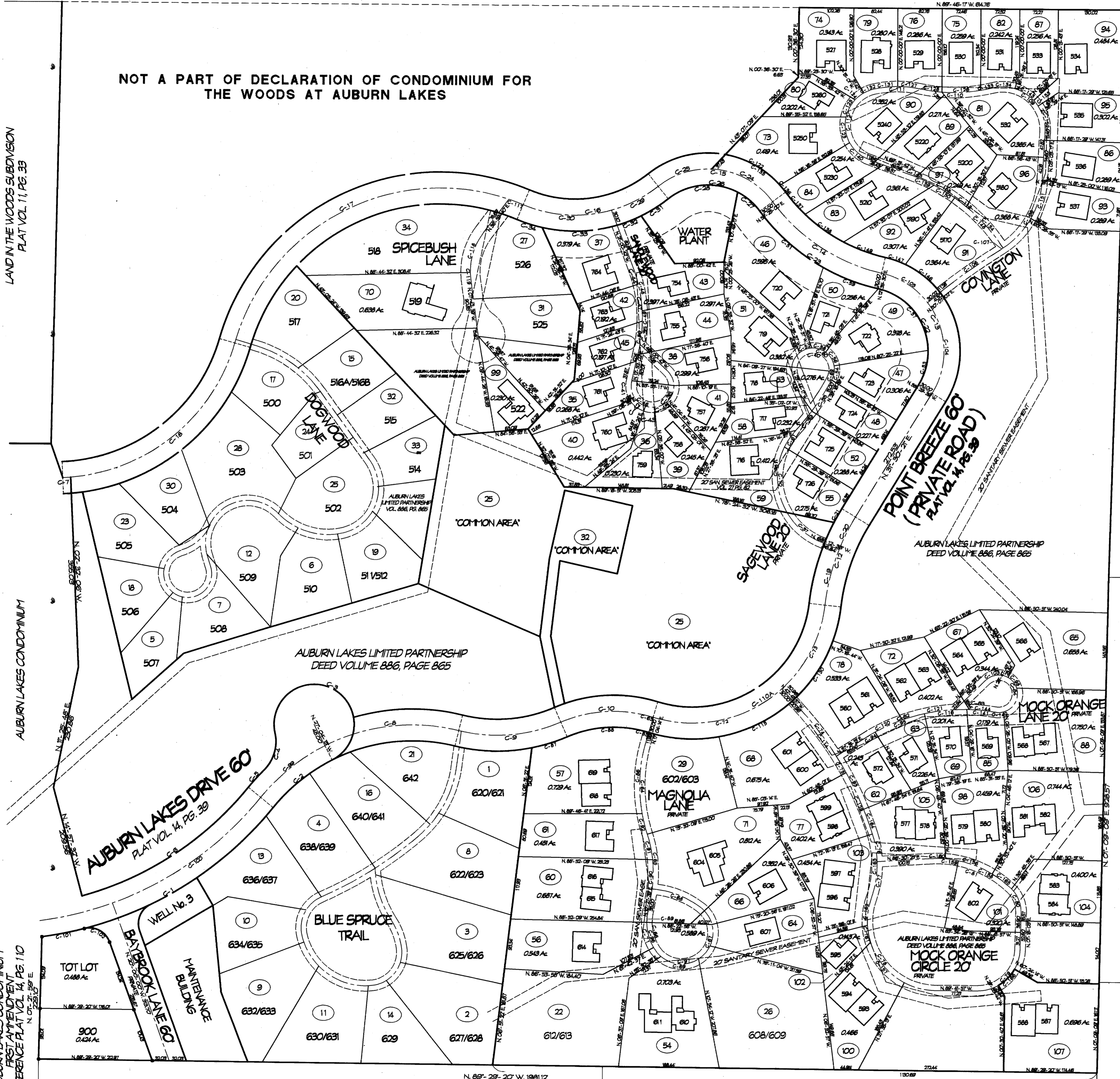
AUBURN LAKES CONDOMINIUM

AUBURN LAKES CONDOMINIUM
FIRST AMENDMENT
REFERENCE PLAT VOL. 14, PG. 110

AUBURN INDUSTRIAL PARK
PARTNERSHIP I
DEED VOL. 647, PG. 663

THE QUEENS DEVELOPMENT CO.
DEED VOL. 1005, PG. 142

R.L. & J.F. SIMPSON
DEED VOL. 911, PG. 688



I DO HEREBY CERTIFY THESE DRAWINGS SHOW GRAPHICALLY ALL PARTICULARS OF BUILDING 587-588 OF THE DECLARATION OF CONDOMINIUM FOR THE WOODS AT AUBURN LAKES, INCLUDING THE LAYOUT, LOCATION, DESIGNATION AND DIMENSIONS OF EACH FAMILY UNIT AND BUILDING AS CONSTRUCTED.



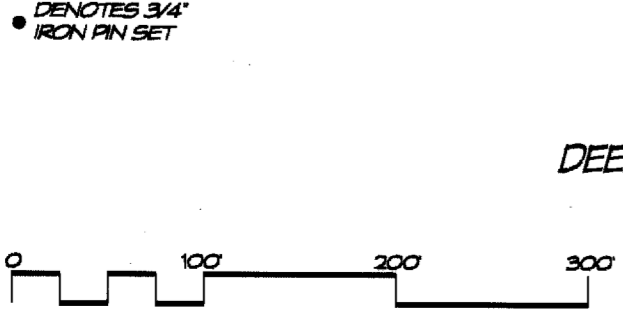
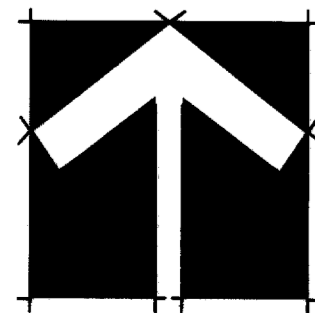
STEVEN J. LESSMAN, PROFESSIONAL SURVEYOR NO. 7078

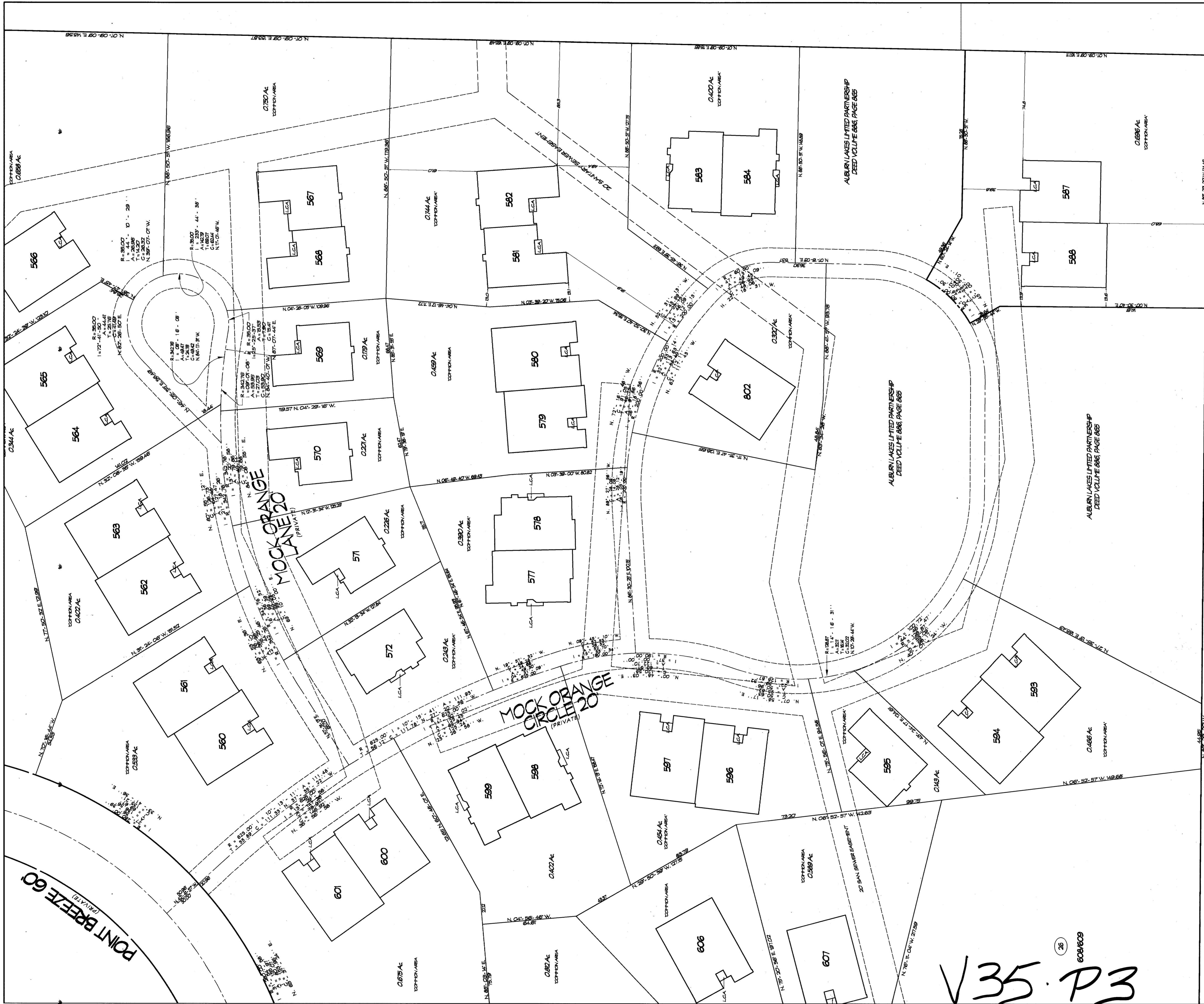
EXHIBIT 'A'
DECLARATION OF CONDOMINIUM FOR THE WOODS AT AUBURN LAKES
MASTER SITE PLAN
SCALE: 1"=100' APR. 2002 SHEET 2 OF 5
LESSMAN, BENDER & ASSOCIATES
Engineers - Surveyors - Planners
Village Station 401 South Street Chardon Ohio 44024
Phone: (440) 286-7204 Fax: (440) 286-3335

V35.P2

J. P. WEINGART
DEED VOL. 800, PG. 919

J. FEHER ET AL.
DEED VOL. 863, PG. 125





J. FEHER ET AL.
DEED VOL. 863, PG. 125

NOTE:
L.C.A. DENOTES 'LIMITED COMMON AREA' FOR FIRST FLOOR ONLY.
ALL LAND NOT OCCUPIED BY BUILDINGS DESIGNATED AS
'LIMITED COMMON AREA' IS 'COMMON AREA'

I DO HEREBY CERTIFY THESE DRAWINGS SHOW GRAPHICALLY ALL PARTICULARS OF BUILDING 507-588 OF THE DECLARATION OF CONDOMINIUM FOR THE WOODS AT AUBURN LAKES, INCLUDING THE LAYOUT, LOCATION, DESIGNATION AND DIMENSIONS OF EACH FAMILY UNIT AND BUILDING AS CONSTRUCTED.

STEVEN J. LESSMAN, PROFESSIONAL SURVEYOR No. 7078



EXHIBIT 'A'

DECLARATION OF CONDOMINIUM FOR THE WOODS AT AUBURN LAKES
BUILDING 507-588
MASTER SITE PLAN

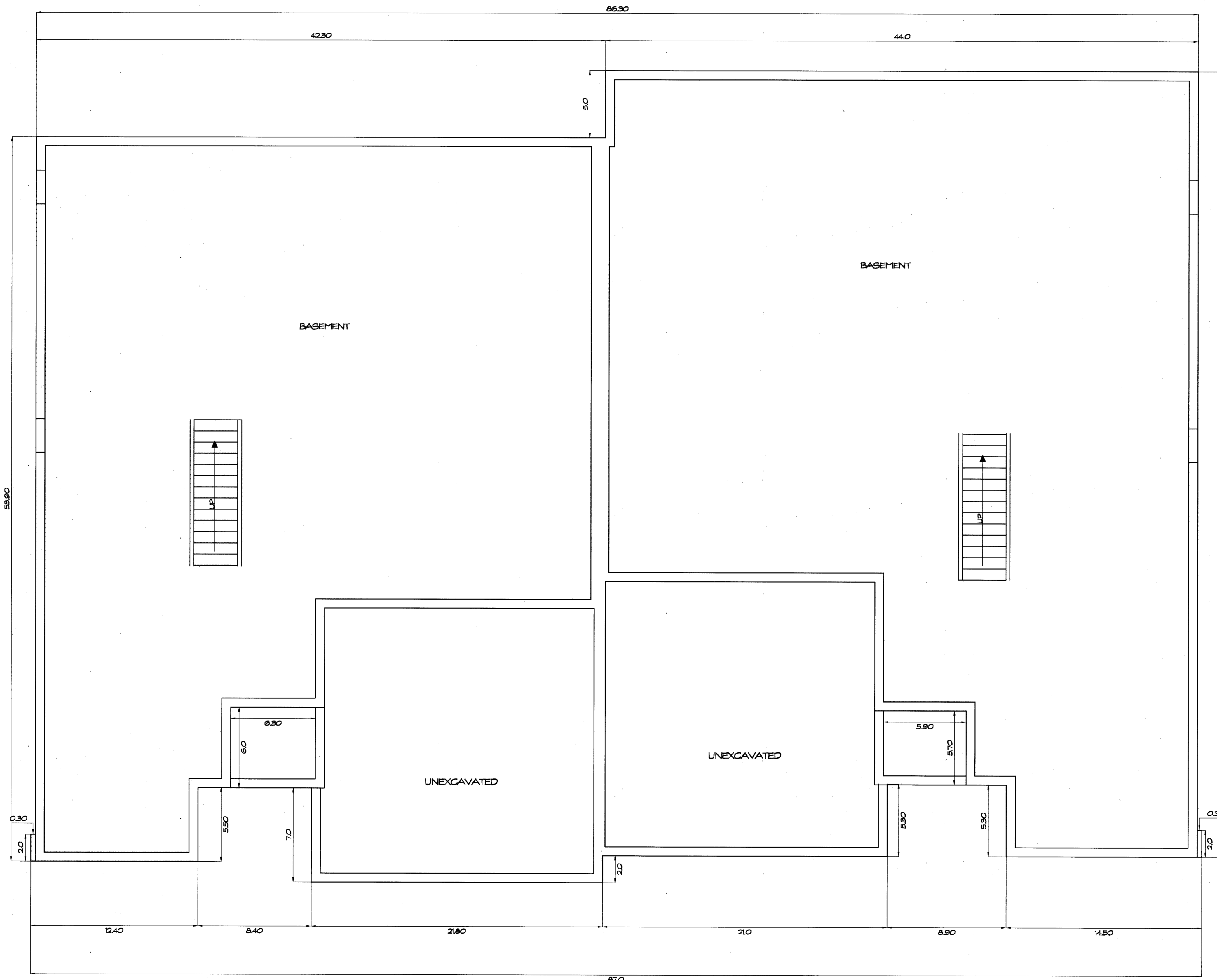
SCALE: 1" = 30' APR. 2002 SHEET 3 OF 5

LESSMAN, BENDER & ASSOCIATES
Engineers - Surveyors - Planners

Village Station 401 South Street Chardon Ohio 44024
Phone: (440) 286-7264 Fax: (440) 286-3333

V35 P3

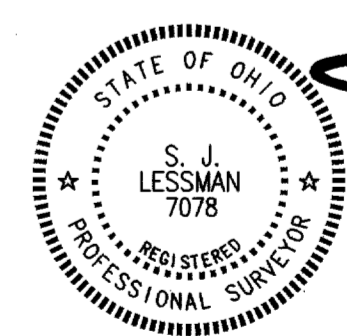
PLANNING CORPORATION • ENGINE CALIFORNIA
MEMBER OF PLANNING CORPORATION
PLANNING CORPORATION • ENGINE CALIFORNIA
MEMBER OF PLANNING CORPORATION
PLANNING CORPORATION • ENGINE CALIFORNIA
MEMBER OF PLANNING CORPORATION



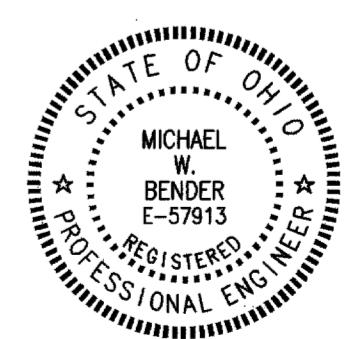
FOUNDATION PLAN
1/4" = 1'-0"

V35.P4

WE DO HEREBY CERTIFY THESE DRAWINGS SHOW GRAPHICALLY ALL PARTICULARS OF BUILDING 587-588 OF THE DECLARATION OF CONDOMINIUM FOR THE WOODS AT AUBURN LAKES, INCLUDING THE LAYOUT, LOCATION, DESIGNATION AND DIMENSIONS OF EACH FAMILY UNIT AND BUILDING CONSTRUCTION.



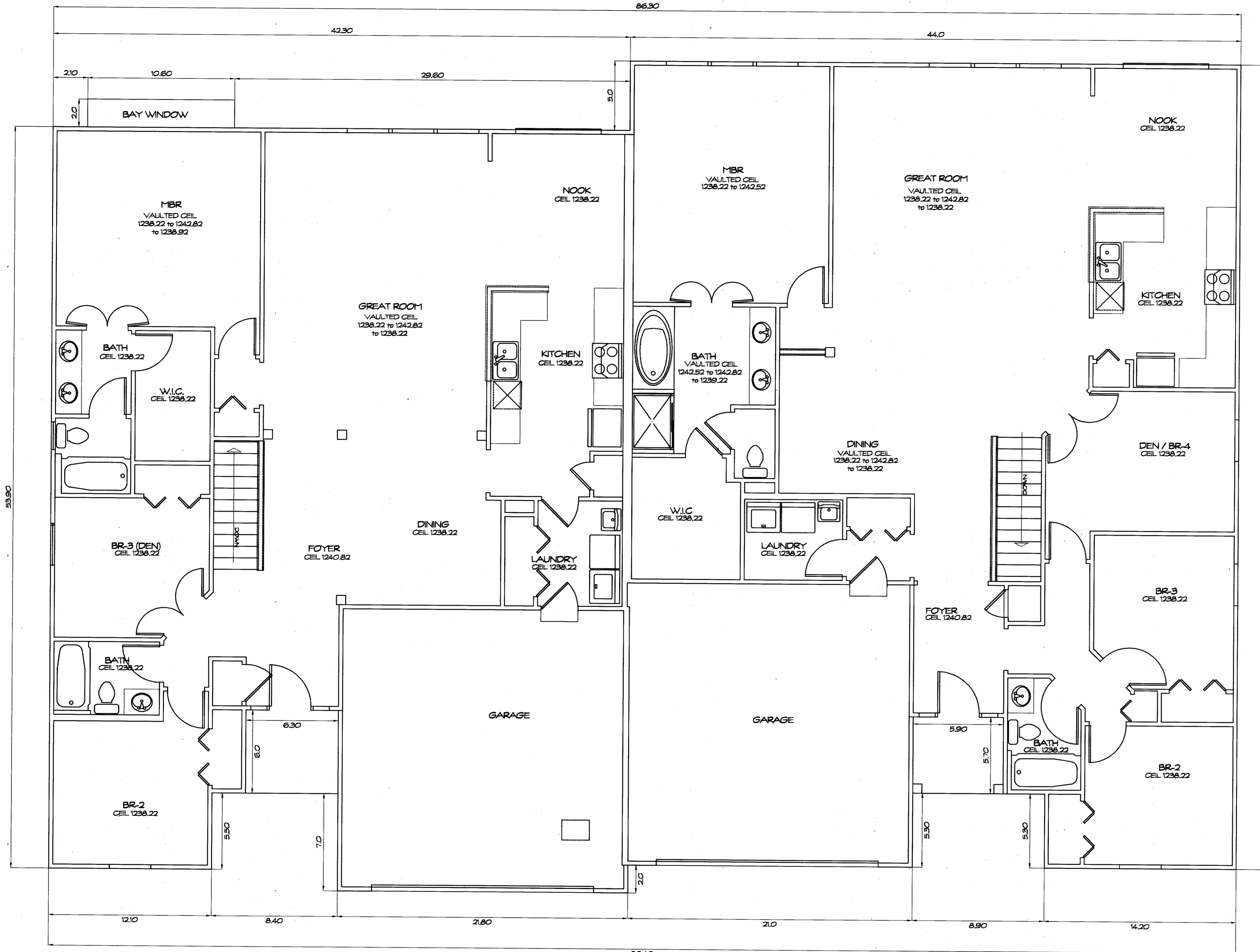
STEVEN J. LESSMAN, PROFESSIONAL SURVEYOR NO. 7078



Michael W. Bender
MICHAEL W. BENDER, PROFESSIONAL ENGINEER NO. E-57913

EXHIBIT 'A'
DECLARATION OF CONDOMINIUM FOR THE WOODS AT AUBURN LAKES
UNIT 587-588
SCALE: 1/4" = 1'-0" | April, 2002 | SHEET 4 OF 5
LESSMAN, BENDER & ASSOCIATES
Engineers - Surveyors - Planners
Village Station 401 South Street Chardon Ohio 44024
Phone: (440) 286-7204 Fax: (440) 286-3333

IRVING CALIFORNIA
 PLAN HOLD CORPORATION * IRVING CALIFORNIA
 REORDER BY NUMBER 07541
 IRVING CALIFORNIA
 PLAN HOLD CORPORATION * IRVING CALIFORNIA
 REORDER BY NUMBER 07541
 IRVING CALIFORNIA
 PLAN HOLD CORPORATION * IRVING CALIFORNIA
 REORDER BY NUMBER 07541
 IRVING CALIFORNIA

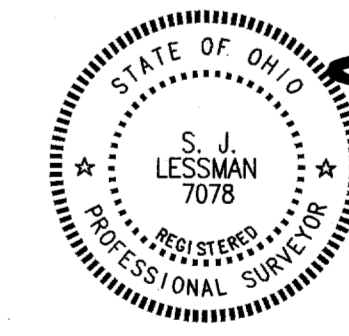


FIRST FLOOR PLAN
1/4" = 1'-0"

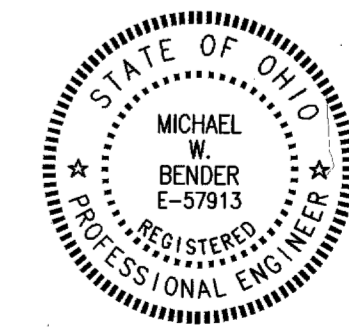
UNIT	GARAGE ELEV. FLOOR	GARAGE ELEV. CEILING	SQ. FT.	BASEMENT ELEV. FLOOR	BASEMENT ELEV. CEILING	SQ. FT.	1ST FLOOR ELEV. FLOOR	1ST FLOOR ELEV. CEILING	SQ. FT.	TOTAL SQ. FT.
587	1228.80	1238.20	445	1221.32	1229.12	1822	1230.22	See Plan	1844	4111
588	1228.80	1238.20	428	1221.32	1229.12	2097	1230.22	See Plan	2097	4622

V35.P5

WE DO HEREBY CERTIFY THESE DRAWINGS SHOW GRAPHICALLY ALL PARTICULARS OF BUILDING 587-588 OF THE DECLARATION OF CONDOMINIUM FOR THE WOODS AT AUBURN LAKES, INCLUDING THE LAYOUT, LOCATION, DESIGNATION AND DIMENSIONS OF EACH FAMILY UNIT AND BUILDING AS SHOWN HEREON.



STEVEN J. LESSMAN, PROFESSIONAL SURVEYOR NO. 7078



MICHAEL W. BENDER, PROFESSIONAL ENGINEER NO. E-57913

EXHIBIT 'A'
DECLARATION OF CONDOMINIUM FOR THE WOODS AT AUBURN LAKES
UNIT 587-588
SCALE: 1/4" = 1'-0" April, 2002 SHEET 5 OF 5
LESSMAN, BENDER & ASSOCIATES
Engineers - Surveyors - Planners
Village Station 401 South Street Chardon Ohio 44024
Phone: (440) 286-7204 Fax: (440) 286-3333