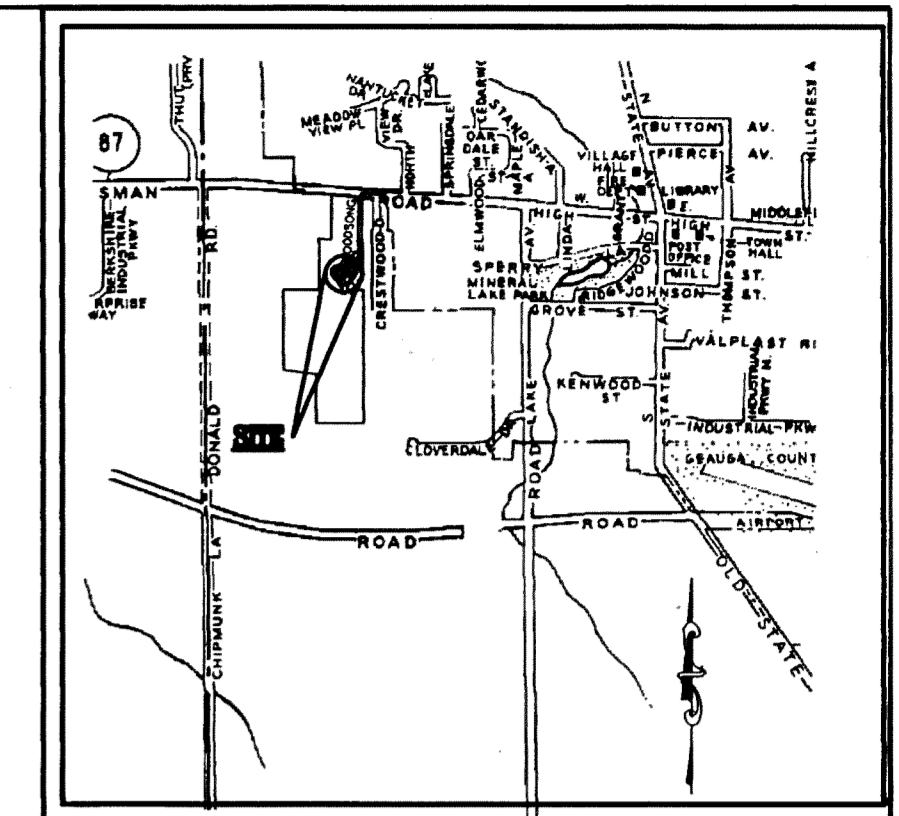
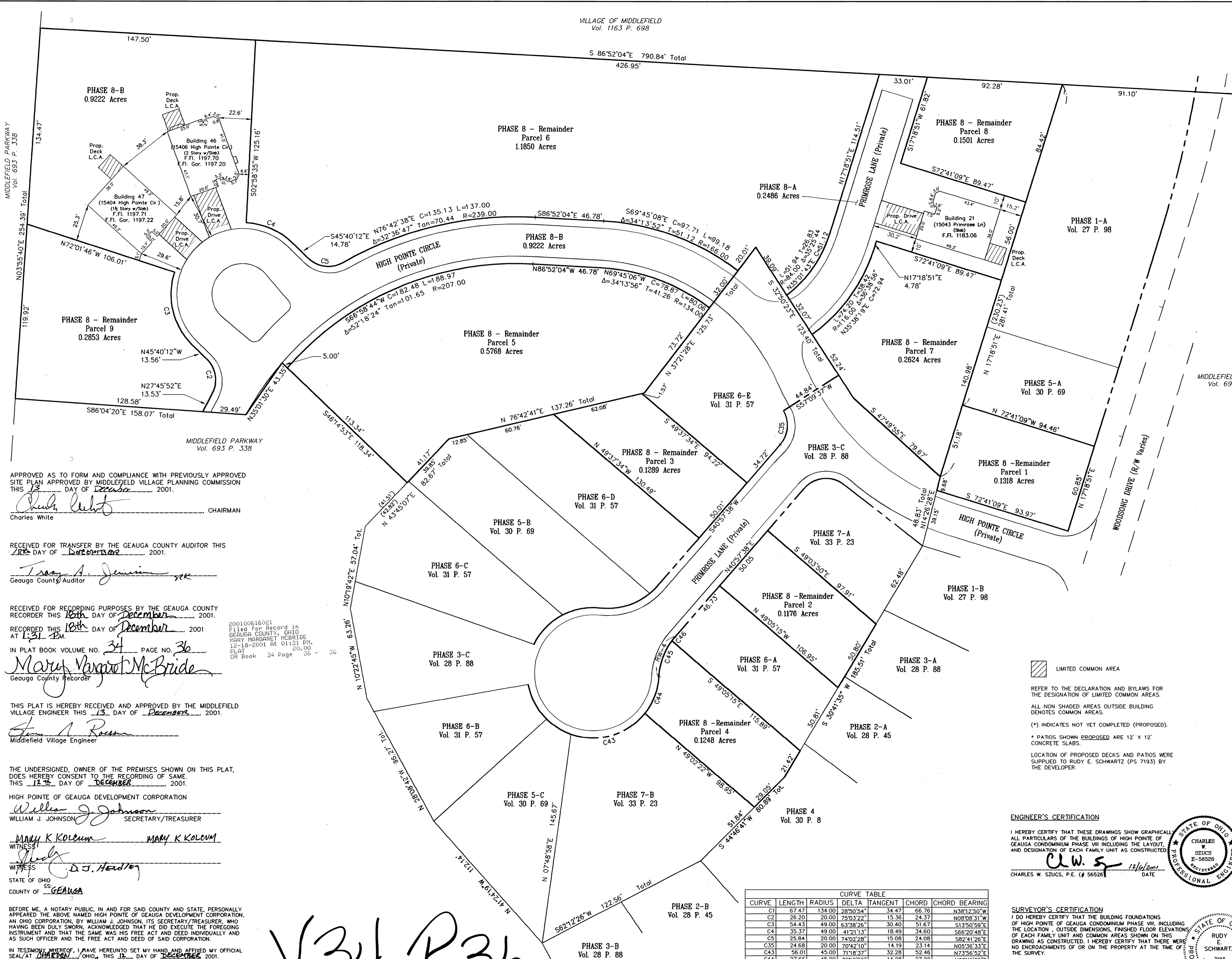


VILLAGE OF MIDDLEFIELD  
Vol. 1163 P. 698



VICINITY MAP  
NOT TO SCALE

BASE OF BEARING  
WOODSON P.L.D. PHASE I  
(Vol. 26 p. 49, and Re-filed in  
Vol. 26 P. 61) AS RECORDED IN  
THE GEauga CO. RECORDER'S OFFICE



APPROVED AS TO FORM AND COMPLIANCE WITH PREVIOUSLY APPROVED  
SITE PLAN APPROVED BY MIDDLEFIELD VILLAGE PLANNING COMMISSION  
THIS 13<sup>th</sup> DAY OF December 2001.

*Charles White*  
CHAIRMAN

RECEIVED FOR TRANSFER BY THE GEauga COUNTY AUDITOR THIS  
18<sup>th</sup> DAY OF December 2001.

*Troy A. Jemison*  
Geauga County Auditor

RECEIVED FOR RECORDING PURPOSES BY THE GEauga COUNTY  
RECORDER THIS 18<sup>th</sup> DAY OF December 2001.

RECORDED THIS 18<sup>th</sup> DAY OF December 2001  
AT 1:31 PM.

IN PLAT BOOK VOLUME NO. 34 PAGE NO. 36

*Mary Margaret McBride*  
Geauga County Recorder

THIS PLAT IS HEREBY RECEIVED AND APPROVED BY THE MIDDLEFIELD  
VILLAGE ENGINEER THIS 13<sup>th</sup> DAY OF December 2001.

*Tom A. Ross*  
Middlefield Village Engineer

THE UNDERSIGNED, OWNER OF THE PREMISES SHOWN ON THIS PLAT,  
DOES HEREBY CONSENT TO THE RECORDING OF SAME.  
THIS 12<sup>th</sup> DAY OF December 2001.

HIGH POINTE OF GEauga DEVELOPMENT CORPORATION

*William J. Johnson*  
WILLIAM J. JOHNSON, SECRETARY/TREASURER

*Mary K. Kolcum*  
MARY K. KOLCUM

WITNESSES  
*D.J. Hendon*

STATE OF OHIO  
COUNTY OF GEauga

BEFORE ME, A NOTARY PUBLIC, IN AND FOR SAID COUNTY AND STATE, PERSONALLY  
APPEARED THE ABOVE NAMED HIGH POINTE OF GEauga DEVELOPMENT CORPORATION,  
AN OHIO CORPORATION, BY WILLIAM J. JOHNSON, ITS SECRETARY/TREASURER, WHO  
HAVING BEEN DULY SWORN, ACKNOWLEDGED THAT HE DID EXECUTE THE FOREGOING  
INSTRUMENT AND THAT THE SAME WAS HIS FREE ACT AND DEED INDIVIDUALLY AND  
AS SUCH OFFICER AND THE FREE ACT AND DEED OF SAID CORPORATION.

IN TESTIMONY WHEREOF, I HAVE HEREUNTO SET MY HAND AND AFFIXED MY OFFICIAL  
SEAL AT MIDDLEFIELD, OHIO, THIS 12<sup>th</sup> DAY OF December 2001.

*Notary Public*  
MY COMMISSION EXPIRES: 12-30-04

V34-P36

AREA TABULATION (Construction Ph 2)

Phase 8	1.1708 Acres Total
Remaining Lands (Parcels 5-9)	2.4598 Acres Total
<b>Total</b>	<b>3.6304 Acres</b>

AREA TABULATION (Construction Ph 1A and 1B)

Phase 1-7	3.7348 Acres Total
Remaining Lands (Parcels 1-4)	0.5031 Acres Total
<b>Total</b>	<b>4.2379 Acres</b>

LIMITED COMMON AREA

REFER TO THE DECLARATION AND BYLAWS FOR  
THE DESIGNATION OF LIMITED COMMON AREAS.

ALL NON SHADED AREAS OUTSIDE BUILDING  
DENOTES COMMON AREAS.

(\*) INDICATES NOT YET COMPLETED (PROPOSED).

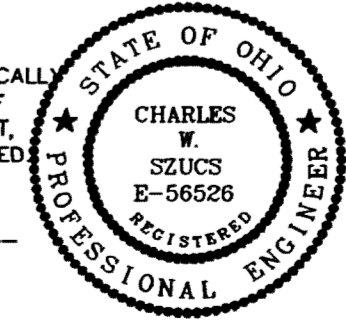
\* PATIOS SHOWN PROPOSED ARE 12' X 12'  
CONCRETE SLABS.

LOCATION OF PROPOSED DECKS AND PATIOS WERE  
SUPPLIED TO RUDY E. SCHWARTZ (PS 7193) BY  
THE DEVELOPER.

ENGINEER'S CERTIFICATION

I HEREBY CERTIFY THAT THESE DRAWINGS SHOW GRAPHICALLY  
ALL PARTICULARS OF THE BUILDINGS OF HIGH POINTE OF  
GEauga CONDOMINIUM PHASE VIII INCLUDING THE LAYOUT,  
AND DESIGNATION OF EACH FAMILY UNIT AS CONSTRUCTED.

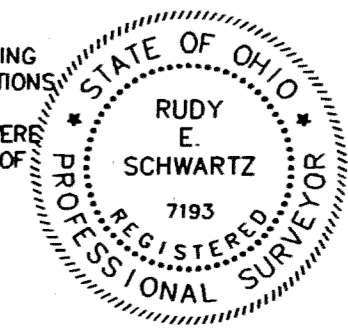
*C.W.S.* 12/16/2001  
CHARLES W. SZUCS, P.E. (# 56526) DATE



SURVEYOR'S CERTIFICATION

I DO HEREBY CERTIFY THAT THE BUILDING FOUNDATIONS  
OF HIGH POINTE OF GEauga CONDOMINIUM PHASE VIII, INCLUDING  
THE LOCATION, OUTSIDE DIMENSIONS, FINISHED FLOOR ELEVATIONS  
OF EACH FAMILY UNIT AND COMMON AREAS SHOWN ON THIS  
DRAWING AS CONSTRUCTED. I HEREBY CERTIFY THAT THERE WERE  
NO ENCROACHMENTS OF OR ON THE PROPERTY AT THE TIME OF  
THE SURVEY.

*Rudy E. Schwartz* 12/06/2001  
RUDY E. SCHWARTZ, P.S. (#7193) DATE



CURVE	LENGTH	RADIUS	DELTA	TANGENT	CHORD	CHORD BEARING
C1	67.47	134.00	28°50'54"	34.47	66.76	N38°12'50"W
C2	26.20	20.00	75°03'22"	15.36	24.37	N08°08'31"W
C3	54.43	49.00	63°38'26"	30.40	51.67	S13°50'59"E
C4	35.37	49.00	41°21'13"	18.49	34.60	S66°20'49"E
C5	25.84	20.00	74°02'28"	15.08	24.08	S82°41'26"E
C35	24.68	20.00	70°21'07"	14.19	23.14	N03°36'33"E
C43	56.01	45.00	71°18'37"	32.28	52.46	N73°36'52"E
C44	27.66	45.00	35°12'55"	14.28	27.22	N20°41'06"E
C45	26.56	45.00	33°48'41"	13.68	26.17	S19°54'45"W
C46	3.27	45.00	4°09'49"	1.64	3.27	S38°52'44"W
RW-4	29.78	45.00	89°56'51"	15.49	29.24	S22°00'05"W

