

VACATION PLAT OF PORTIONS OF VIEW DRIVE AND KIWANIS DRIVE  
PART OF ORIGINAL LOT 4, TRACT 2  
NEWBURY TOWNSHIP, GEAUGA COUNTY, OHIO

AND BEING PART OF KIWANIS LAKE SUBDIVISION No. 1 AS  
RECORDED IN GEAUGA COUNTY PLAT BOOK VOLUME 1, PAGE 44

I DO HEREBY CERTIFY THAT I HAVE SURVEYED THE PREMISES WITH THE EXCEPTION  
OF A PORTION OF KIWANIS DRIVE AS SHOWN HEREON, AND PREPARED  
THIS PLAT IN ACCORDANCE WITH THE PROVISIONS OF CHAPTER 4733-37  
OF THE OHIO ADMINISTRATIVE CODE. DIMENSIONS SHOWN ARE EXPRESSED  
IN FEET AND DECIMAL PARTS THEREOF. BEARINGS SHOWN HEREON ARE  
TO AN ASSUMED MERIDIAN AND ARE USED TO DENOTE ANGLES ONLY.  
I CERTIFY THE ABOVE TO BE CORRECT TO THE BEST OF MY KNOWLEDGE  
AND BELIEF.

ATTEST Robert L. Phillips 7-19-96  
ROBERT L. PHILLIPS, P.S. #105 DATE

APPROVALS

THE GEAUGA COUNTY BOARD OF COMMISSIONERS DOES HEREBY ORDER THE VACATION OF PORTIONS OF KIWANIS DRIVE AND  
VIEW DRIVE AS SHOWN HEREON. THIS PLAT HEREBY RELEASES, CANCELS, RESCINDS, AND VACATES THOSE PORTIONS OF  
KIWANIS DRIVE AND VIEW DRIVE AS SHOWN HEREON. THE VACATED PORTION OF KIWANIS DRIVE AND OF VIEW DRIVE SHALL  
PASS IN FEE SIMPLE TO THE ABUTTING LAND OWNERS AS SHOWN HEREON PURSUANT TO OHIO LAW.

THIS 25<sup>th</sup> DAY OF July 1996.

William M. Repke Neil C. Hofstetter Jan Novak  
COUNTY COMMISSIONER COUNTY COMMISSIONER COUNTY COMMISSIONER

APPROVED BY THE GEAUGA COUNTY ENGINEER THIS 19<sup>th</sup> DAY OF July 1996.

Robert L. Phillips  
ROBERT L. PHILLIPS, COUNTY ENGINEER

APPROVED AS TO LEGAL FORM THIS 30<sup>th</sup> DAY OF July 1996.

Donald B. Bagley III  
DONALD B. BAGLEY III, ASSISTANT PROSECUTING ATTORNEY

TRANSFERRED BY THE GEAUGA COUNTY AUDITOR THIS 30<sup>th</sup> DAY OF

July 1996.

Tracy A. Jemison  
TRACY JEMISON, GEAUGA COUNTY AUDITOR

8-14-96 Tracy A. Jemison  
4-5-01 Tracy A. Jemison  
NO TRANSFER RECORDS START

200100396456  
Filed for Record in  
GEAUGA COUNTY, OHIO  
MARY MARGARET MCBRIDE  
04-05-2001 at 03:41 pm.  
COUNTY PLAT .00  
UR Book 32 Page 1 - 1

490036

RECORDED THIS 30<sup>th</sup> DAY OF July 1996 IN VOLUME 24, PAGE 12  
OF THE GEAUGA COUNTY BOOK OF PLATS.

RECEIVED FOR RECORD BY THE GEAUGA COUNTY RECORDER THIS 30<sup>th</sup> DAY OF July 1996.  
Catherine Heiden  
CATHERINE HEIDEN, COUNTY RECORDER

491048  
**RECORDED**

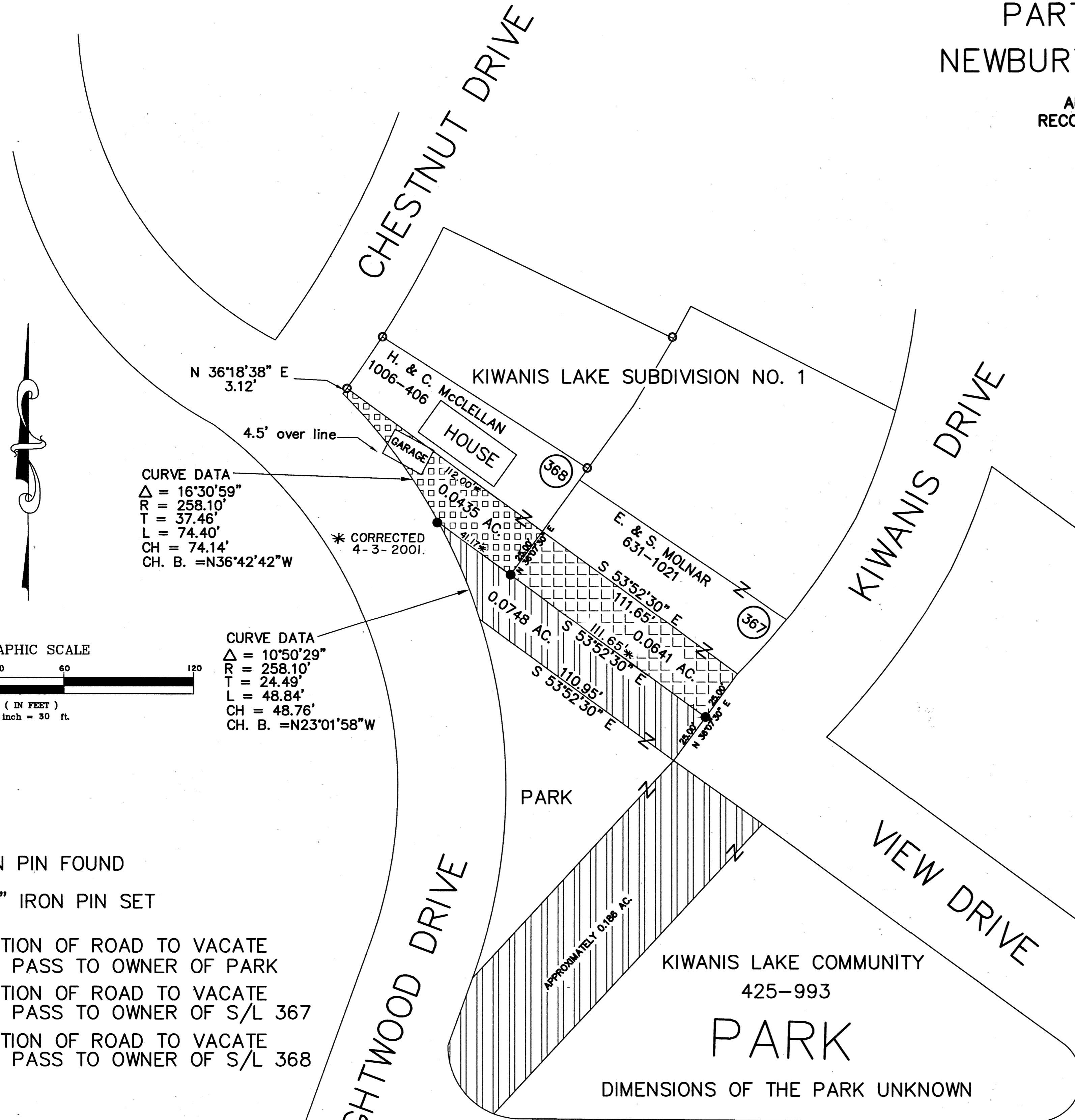
Re-recorded for record this 14<sup>th</sup> day of August 1996  
at 2:15 PM. in Plat Volume 24 Page 17 of  
Geauga County records of plats.  
Catherine H. Heiden  
Recorder

~~24-17~~ ~~24-12~~ SHEET NO. 1 OF 1

Re-recorded for record this 5<sup>th</sup> day of April, 2001 at 3:41 PM. in Plat  
Volume 32 Page 1 of the Geauga County records of Plats.  
Mary Margaret McBride  
County Recorder

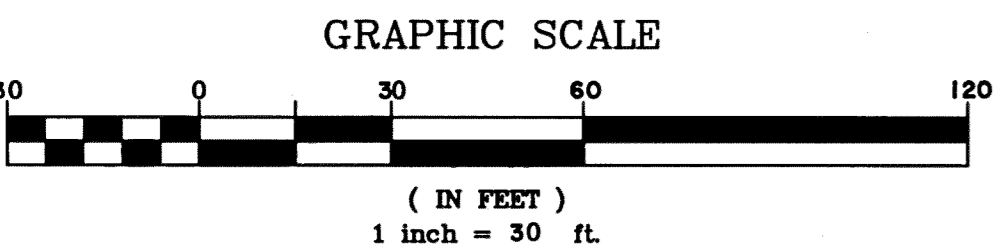
~~24-17~~ ~~24-12~~

V32.P1



CURVE DATA  
 $\Delta = 16^{\circ}30'59''$   
 $R = 258.10'$   
 $T = 37.46'$   
 $L = 74.40'$   
 $CH = 74.14'$   
CH. B. =  $N36^{\circ}42'42''W$

CURVE DATA  
 $\Delta = 10^{\circ}50'29''$   
 $R = 258.10'$   
 $T = 24.49'$   
 $L = 48.84'$   
 $CH = 48.76'$   
CH. B. =  $N23^{\circ}01'58''W$



LEGEND

- — IRON PIN FOUND
- — 3/4" IRON PIN SET
- PORTION OF ROAD TO VACATE AND PASS TO OWNER OF PARK
- PORTION OF ROAD TO VACATE AND PASS TO OWNER OF S/L 367
- PORTION OF ROAD TO VACATE AND PASS TO OWNER OF S/L 368