

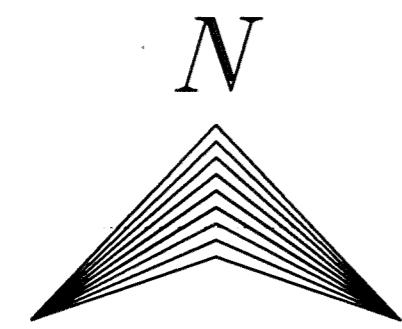
CANYON LAKE COLONY

SUBDIVISION NO. 9A



BRAUN-PRENOSIL
ASSOCIATES, INC.

ENGINEERS, SURVEYORS, LAND PLANNING & WETLAND SERVICES
4640 Richmond Road Suite 100 Warrensville Hts., Ohio 44128 Tel(216)378-1490 Fax(216)378-1497 braun@apl.net



JUNE 1999
SCALE IN FEET



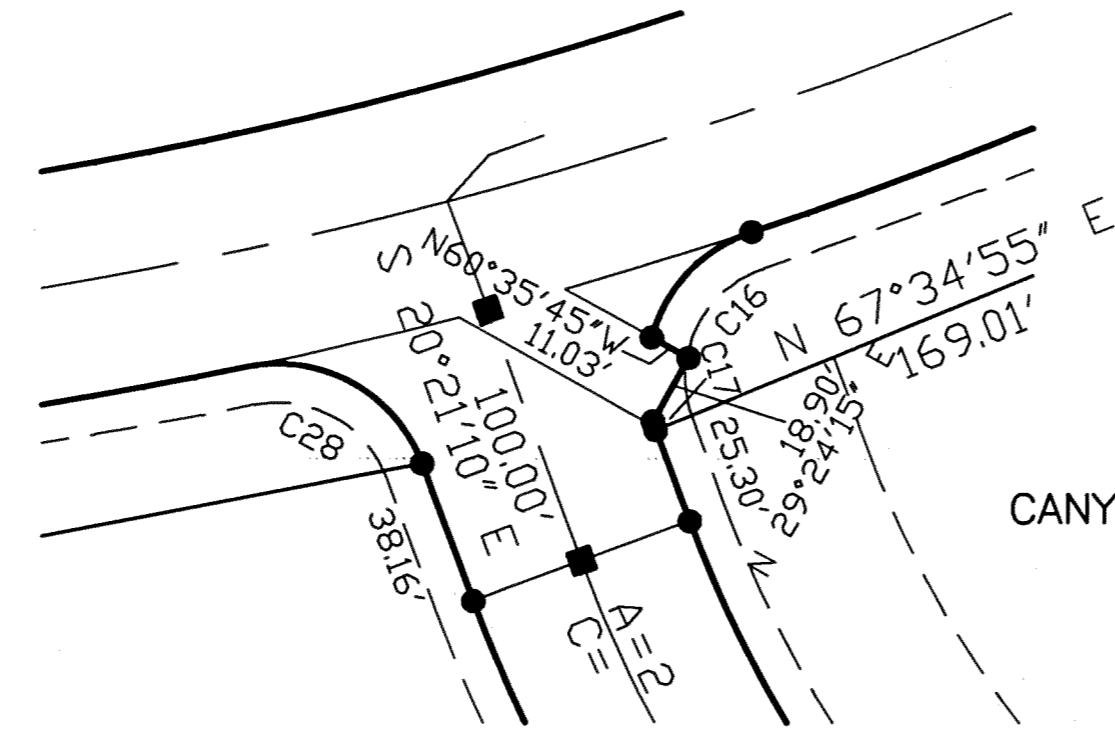
LEGEND

- - IRON PIN OR PIPE FOUND
- - 5/8" IRON PIN SET AT PROPERTY CORNERS
- ⊗ - 5/8" IRON PIN MONUMENT SET AT SUBDIVISION CORNERS
- - 1" IRON PIN IN MONUMENT ASSEMBLIES SET IN PAVEMENT
- O.S. - OPEN SPACE

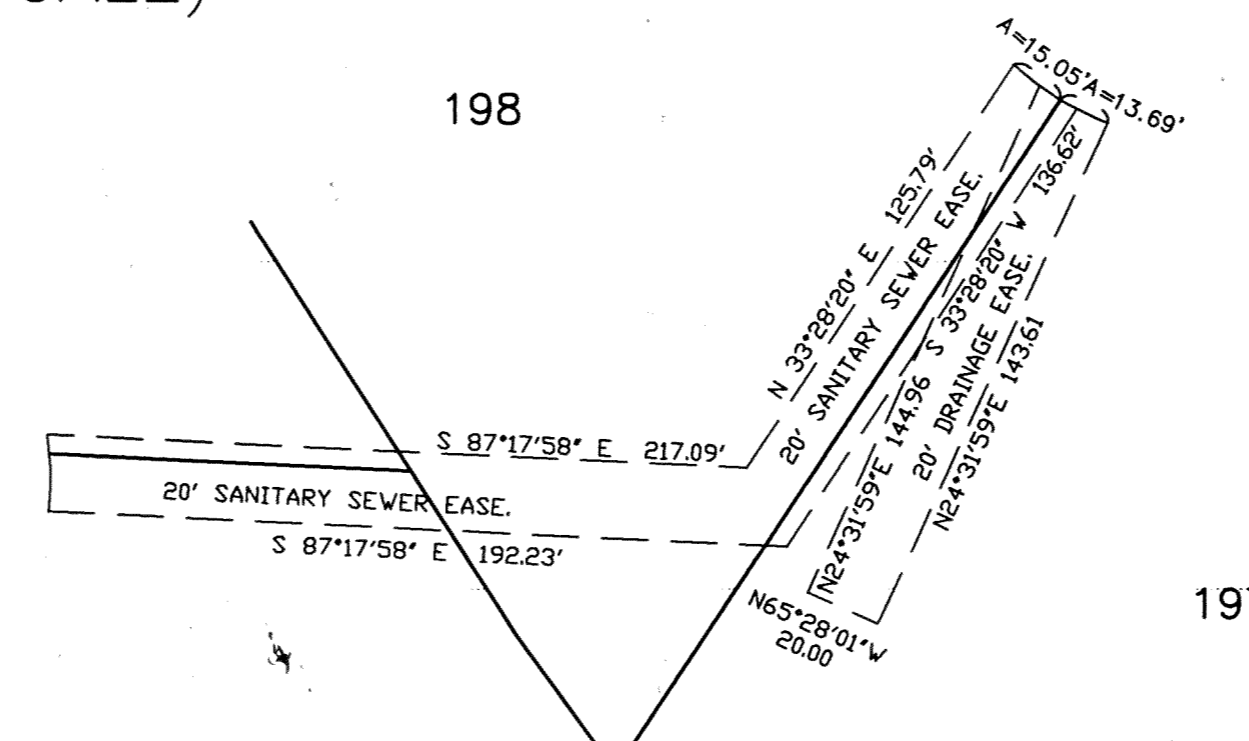
CURVE	RADIUS	ARC LENGTH	CHORD LEN	CHORD BEARING	DELTA ANGLE	TANGENT
C1	324.33'	38.84'	38.84'	N 44°13'53" E	02°24'21"	13.42'
C2	40.00'	56.97'	52.27'	N 02°13'41" E	81°36'02"	34.33'
C3	251.82'	73.92'	179.25'	S 28°10'22" E	12°47'43"	40.12'
C4	257.82'	115.25'	118.74'	S 16°13'31" E	19°06'05"	60.21'
C5	357.82'	26.85'	92.29'	S 00°43'38" W	14°59'01"	46.69'
C6	75.00'	45.70'	48.72'	N 10°47'27" W	37°57'59"	53.80'
C7	75.00'	135.99'	118.11'	S 22°10'12" W	103°53'16"	95.80'
C8	75.00'	61.60'	39.89'	S 88°21'00" E	47°03'40"	32.64'
C9	75.00'	91.56'	85.98'	N 23°51'11" W	69°56'39"	50.46'
C10	75.00'	63.71'	61.81'	N 35°27'13" E	48°40'08"	33.92'
C11	75.00'	76.06'	72.84'	S 30°44'00" W	58°05'20"	41.66'
C12	297.82'	75.29'	75.09'	S 05°33'37" E	14°29'01"	37.85'
C13	297.82'	133.92'	130.89'	S 25°41'14" E	69°46'18"	68.12'
C14	40.00'	64.18'	57.52'	S 84°32'25" E	57°56'11"	41.38'
C15	1175.92'	453.41'	450.61'	N 60°32'15" E	22°02'31"	229.56'
C16	40.00'	39.49'	37.31'	N 43°17'58" E	56°34'00"	21.32'
C17	40.00'	2.53'	2.53'	N 18°32'37" W	09°37'05"	1.26'

OPEN SPACE AS INDICATED ON THIS PLAT SHALL BE CONVEYED TO CANYON LAKE COLONY HOMEOWNERS ASSOCIATION AS RECORDED IN VOLUME 819, PAGE 982 OF GEauga COUNTY DEED RECORDS.

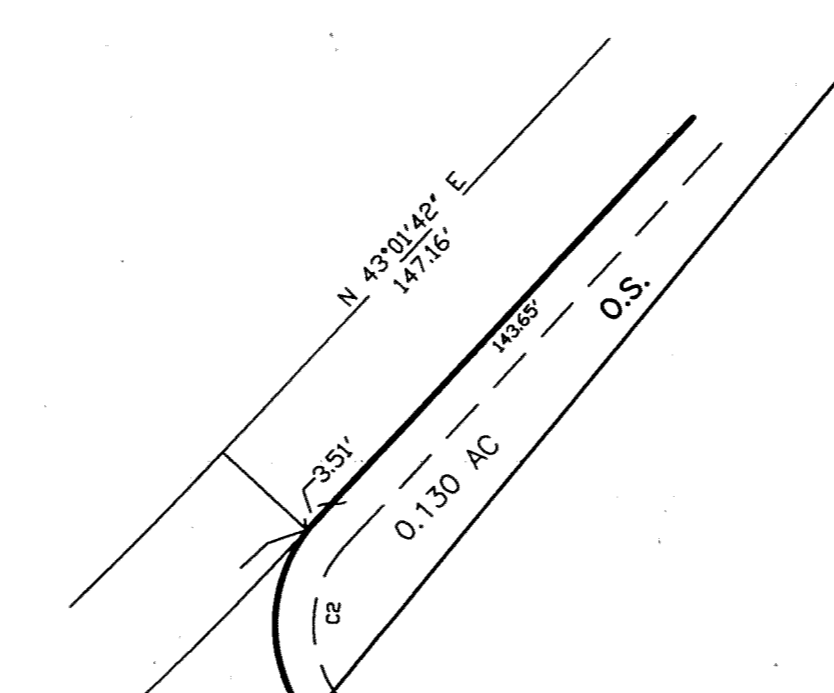
ALL SUBLOTS AS INDICATED ON THIS PLAT ARE SUBJECT TO THE COVENANTS AND RESTRICTIONS OF THE CANYON LAKE COLONY MASTER HOMEOWNERS ASSOCIATION AS RECORDED IN VOLUME 881, PAGE 1131 OF GEauga COUNTY DEED RECORDS.



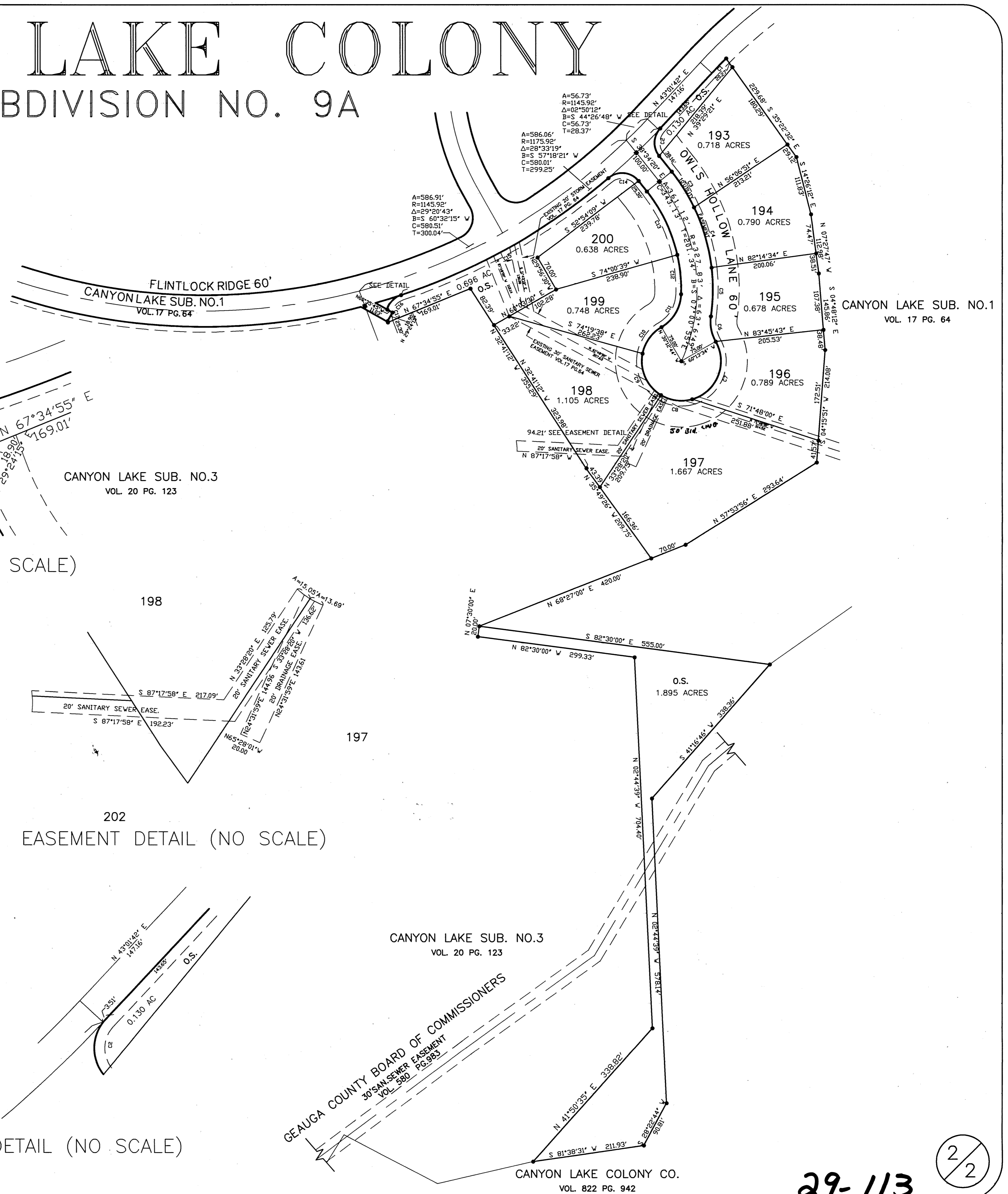
DETAIL (NO SCALE)



EASEMENT DETAIL (NO SCALE)



DETAIL (NO SCALE)



GEAUGA COUNTY BOARD OF COMMISSIONERS
30' SANITARY SEWER EASEMENT
VOL. 580 PG. 983

CANYON LAKE COLONY CO.
VOL. 822 PG. 942