

AUBURN LAKES LIMITED PARTNERSHIP
DEED VOLUME 886, PAGE 865

NOTE:
L.C.A. DENOTES LIMITED COMMON AREA FOR FIRST FLOOR ONLY.
ALL LAND NOT OCCUPIED BY BUILDINGS DESIGNATED AS LIMITED COMMON AREA'S COMMON AREA.

I DO HEREBY CERTIFY THESE DRAWINGS SHOW GRAPHICALLY ALL PARTICULARS OF BUILDING 70 OF THE DECLARATION OF CONDOMINIUM FOR THE WOODS AT AUBURN LAKES, INCLUDING THE LAYOUT, LOCATION, DESIGNATION AND DIMENSIONS OF EACH FAMILY UNIT AND BUILDING AS CONSTRUCTED.



STEVEN J. LESSMAN, PROFESSIONAL SURVEYOR

EXHIBIT 'A'

DECLARATION OF CONDOMINIUM FOR THE WOODS AT AUBURN LAKES

**BUILDING 70
MASTER SITE PLAN**

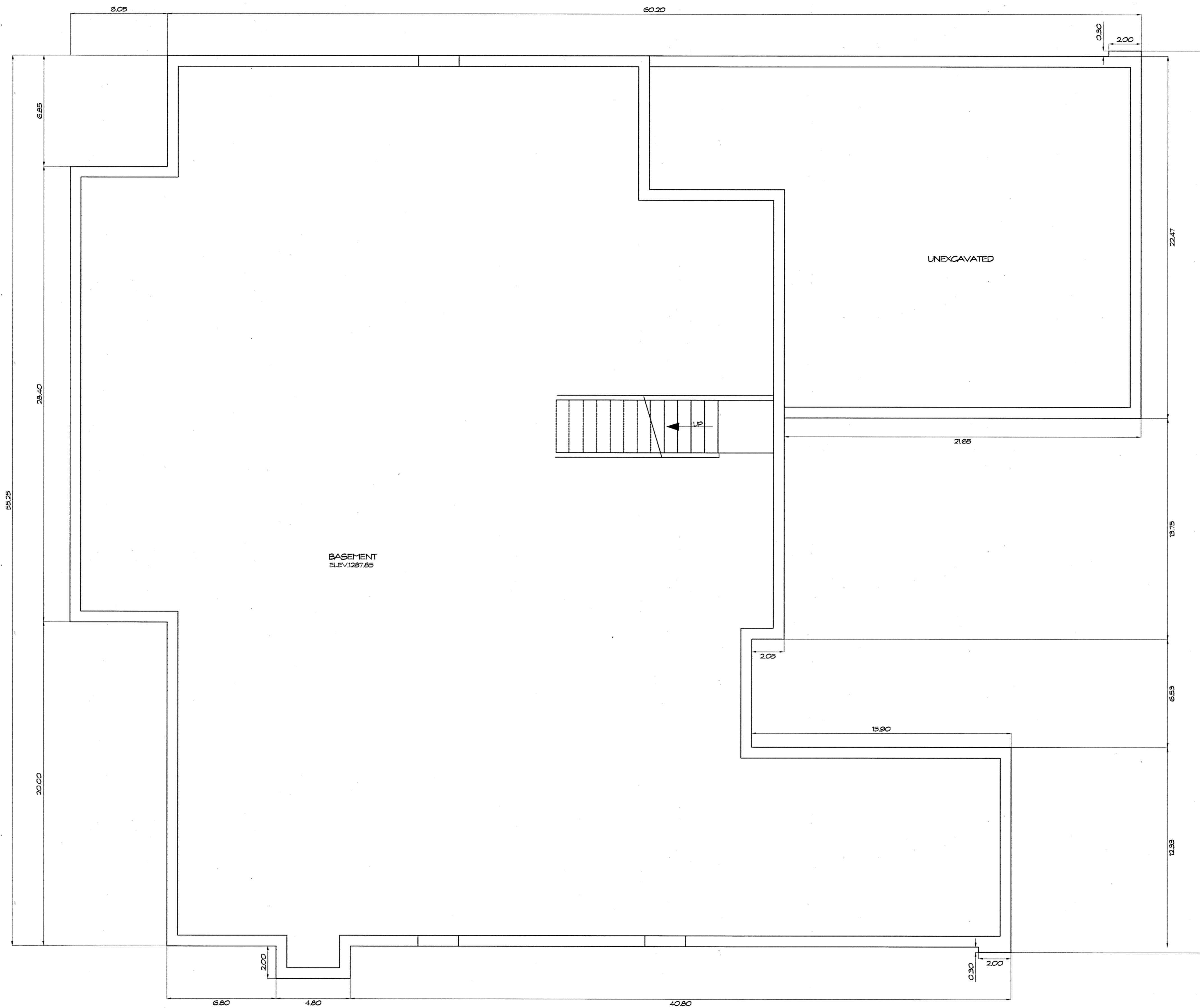
SCALE: T=30' NOV. 1999 SHEET 2 OF 4

LESSMAN, BENDER & ASSOCIATES
Engineers - Surveyors - Planners

Village Station 401 South Street Chardon Ohio 44024
Phone: (440) 286-7204 Fax: (440) 286-3535

29-26

PLAN HOLD CORPORATION • IRVINE, CALIFORNIA
 REGISTERED NUMBER 02584
 PROFESSIONAL SEAL OF IRVINE, CALIFORNIA
 PLAN HOLD CORPORATION • IRVINE, CALIFORNIA
 REGISTERED NUMBER 02584
 PROFESSIONAL SEAL OF IRVINE, CALIFORNIA

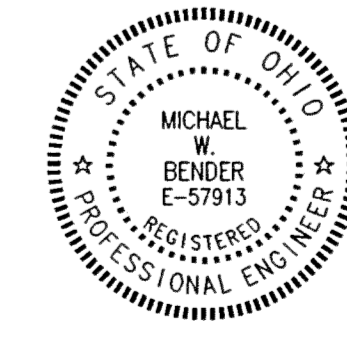


FOUNDATION PLAN
1/4" = 1'-0"

WE DO HEREBY CERTIFY THESE DRAWINGS SHOW GRAPHICALLY ALL PARTICULARS OF BUILDING 719 OF THE DECLARATION OF CONDOMINIUM FOR THE WOODS AT AUBURN LAKES, INCLUDING THE LAYOUT, LOCATION, DESIGNATION AND DIMENSIONS OF EACH FAMILY UNIT AND BUILDING AS CONSTRUCTED.



STEVEN J. LESSMAN, PROFESSIONAL SURVEYOR NO. 7078

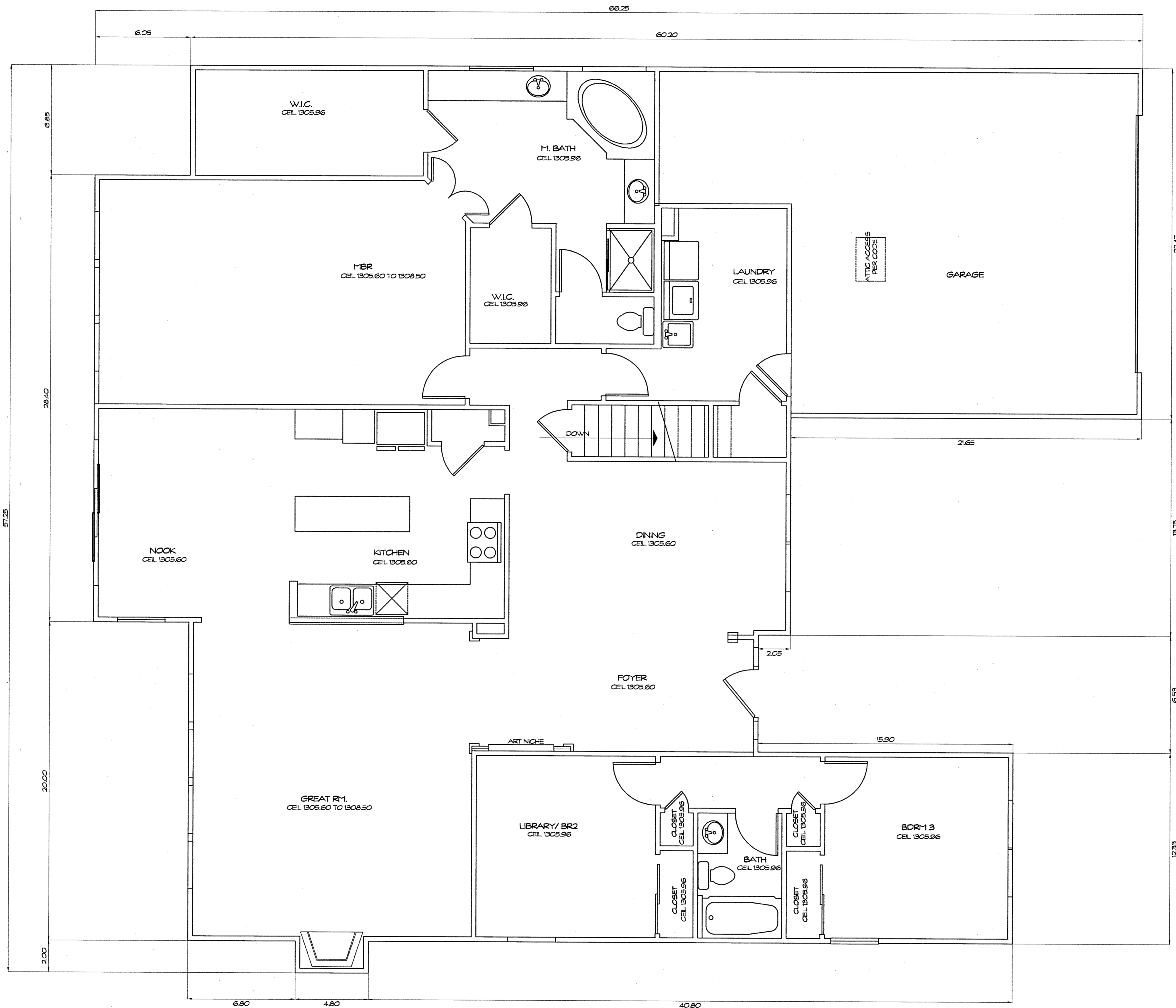


MICHAEL W. BENDER, PROFESSIONAL ENGINEER NO. 65793

EXHIBIT "A"
DECLARATION OF CONDOMINIUM FOR THE WOODS AT AUBURN LAKES
BUILDING 719
SCALE: 1/4" = 1'-0" | NOV. 1999 | SHEET 3 OF 4
LESSMAN, BENDER & ASSOCIATES
Engineers - Surveyors - Planners
Village Station 401 South Street Chardon Ohio 44024
Phone: (440) 286-7204 Fax: (440) 286-3535

29-27

IRVINE CALIFORNIA
PLAN HOLD CORPORATION • IRVINE CALIFORNIA
REGISTERED BY NUMBER 07284
IRVINE CALIFORNIA
REGISTERED BY NUMBER 07284
IRVINE CALIFORNIA
REGISTERED BY NUMBER 07284
IRVINE CALIFORNIA
REGISTERED BY NUMBER 07284



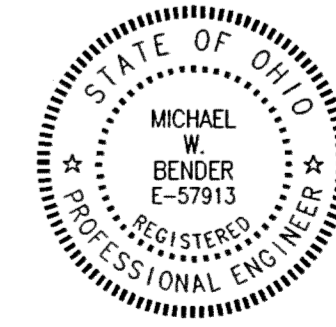
FIRST FLOOR PLAN
1/4" = 1'-0"

UNIT	GARAGE ELEV.		SQ. FT.	BASEMENT ELEV.		SQ. FT.	1ST FLOOR ELEV.		SQ. FT.	TOTAL SQ. FT.
	FLOOR	CEILING		FLOOR	CEILING		FLOOR	CEILING		
719	1294.69	1304.69	749	1287.85	1295.65	1583	1296.60	See Plan	1583	3915

WE DO HEREBY CERTIFY THESE DRAWINGS SHOW GRAPHICALLY ALL PARTICULARS OF BUILDING 719 OF THE DECLARATION OF CONDOMINIUM FOR THE WOODS AT AUBURN LAKES, INCLUDING THE LAYOUT, LOCATION, DESIGNATION AND DIMENSIONS OF EACH FAMILY UNIT AND BUILDING AS CONSTRUCTED.



STEVEN J. LESSMAN, PROFESSIONAL SURVEYOR NO. 7078



MICHAEL W. BENDER, PROFESSIONAL ENGINEER NO. E-57913

EXHIBIT "A"
DECLARATION OF CONDOMINIUM FOR THE WOODS AT AUBURN LAKES
BUILDING 719
SCALE: 1/4" = 1'-0" NOV. 1999 SHEET 4 OF 4

LESSMAN, BENDER & ASSOCIATES
Engineers - Surveyors - Planners
Village Station 401 South Street Chardon Ohio 44024
Phone: (440) 286-7204 Fax: (440) 286-3535

29-28