

EXHIBIT A
DECLARATION OF CONDOMINIUM FOR THE WOODS AT AUBURN LAKES

SITUATED IN THE TOWNSHIP OF AUBURN, COUNTY OF GEauga AND STATE OF OHIO, AND KNOWN AS BEING PART OF ORIGINAL AUBURN TOWNSHIP SECTION ONE, TRACT TWO AND CONTAINING 83.986 AC.

NOT A PART OF DECLARATION OF CONDOMINIUM FOR THE WOODS AT AUBURN LAKES

AUBURN LAKES LIMITED PARTNERSHIP
DEED VOLUME 886, PAGE 865

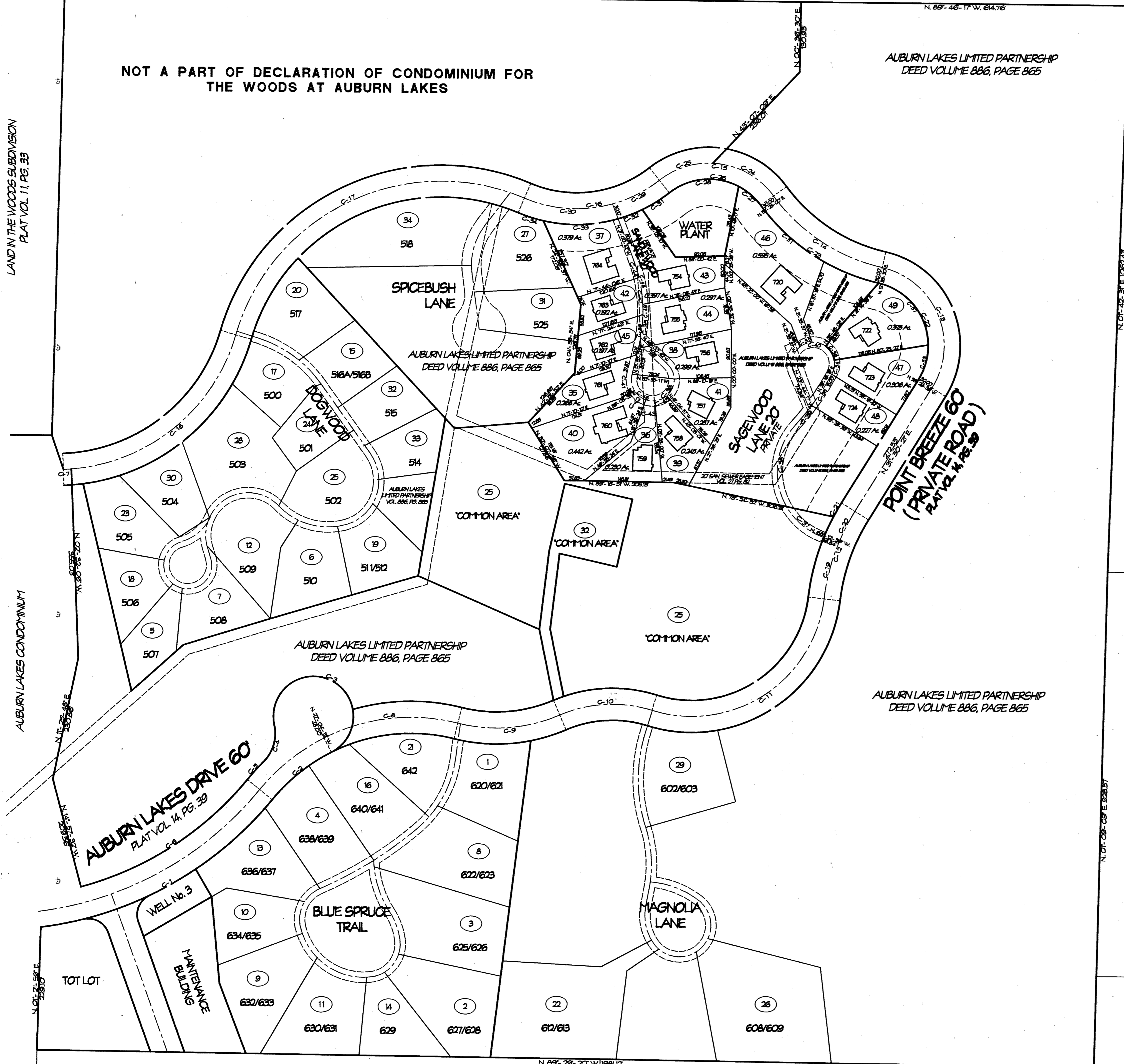
LAND IN THE WOODS SUBDIVISION
PLAT VOL. 11, PG. 33

AUBURN LAKES CONDOMINIUM

AUBURN INDUSTRIAL PARK
PARTNERSHIP I
DEED VOL. 647, PG. 663

THE QUEENS DEVELOPMENT CO.
DEED VOL. 1005, PG. 1142

RL & JF SIMPSON
DEED VOL. 91, PG. 688



LGND	AMENDMENT	DATE	R/S	VOL. NO.
1	ORIGINAL	FEB. 1995	620/621	V. 22 P. 77
2	AMENDMENT NO. 1	MAY 95	628/629	V. 22 P. 91
3	AMENDMENT NO. 2	JUL 95	625/626	V. 22 P. 103
4	AMENDMENT NO. 3	AUG 95	638/639	V. 22 P. 119
5	AMENDMENT NO. 4	SEP. 95	507	V. 23 P. 2
6	AMENDMENT NO. 5	SEP. 95	510	V. 23 P. 2
7	AMENDMENT NO. 6	NOV. 95	508	V. 23 P. 28
8	AMENDMENT NO. 7	FEB. 96	622/623	V. 23 P. 50
9	AMENDMENT NO. 8	APR. 96	630/633	V. 23 P. 59
10	AMENDMENT NO. 9	APR. 96	634/635	V. 23 P. 64
11	AMENDMENT NO. 10	MAY 96	630/631	V. 23 P. 83
12	AMENDMENT NO. 11	JUL 96	636/637	V. 24 P. 01
13	AMENDMENT NO. 12	JUL 96	629	V. 24 P. 25
14	AMENDMENT NO. 13	OCT. 96	516	V. 24 P. 44
15	AMENDMENT NO. 14	OCT. 96	640/641	V. 24 P. 51
16	AMENDMENT NO. 15	OCT. 96	500	V. 24 P. 58
17	AMENDMENT NO. 16	NOV. 96	506	V. 24 P. 72
18	AMENDMENT NO. 17	JAN. 97	511/512	V. 24 P. 106
19	AMENDMENT NO. 18	APR. 97	517	V. 25 P. 17
20	AMENDMENT NO. 19	MAY 97	642	V. 25 P. 45
21	AMENDMENT NO. 20	MAY 97	612/613	V. 25 P. 49
22	AMENDMENT NO. 21	MAY 97	505	V. 25 P. 56
23	AMENDMENT NO. 22	JAN. 98	501	V. 26 P. 14
24	AMENDMENT NO. 23	MAR. 98	502	V. 26 P. 35
25	AMENDMENT NO. 24	APR. 98	608/609	V. 26 P. 44
26	AMENDMENT NO. 25	MAY 98	526	V. 26 P. 53
27	AMENDMENT NO. 26	JUN. 98	503	V. 26 P. 63
28	AMENDMENT NO. 27	JUL. 98	602/603	V. 26 P. 89
29	AMENDMENT NO. 28	JUL. 98	504	V. 27 P. 15
30	AMENDMENT NO. 29	SEP. 98	515	V. 27 P. 15
31	AMENDMENT NO. 30	NOV. 98	514	V. 27 P. 15
32	AMENDMENT NO. 31	NOV. 98	514	V. 27 P. 15
33	AMENDMENT NO. 32	MAR. 99	518	V. 27 P. 15
34	AMENDMENT NO. 33	JUN. 99	761	V. 27 P. 15
35	AMENDMENT NO. 34	JUN. 99	761	V. 27 P. 15
36	AMENDMENT NO. 35	JUN. 99	764	V. 27 P. 15
37	AMENDMENT NO. 36	JUN. 99	764	V. 27 P. 15
38	AMENDMENT NO. 37	JULY 99	756	V. 27 P. 15
39	AMENDMENT NO. 38	JULY 99	756	V. 27 P. 15
40	AMENDMENT NO. 39	JULY 99	760	V. 27 P. 15
41	AMENDMENT NO. 40	JULY 99	757	V. 27 P. 15
42	AMENDMENT NO. 41	AUG. 99	763	V. 27 P. 15
43	AMENDMENT NO. 42	AUG. 99	754	V. 27 P. 15

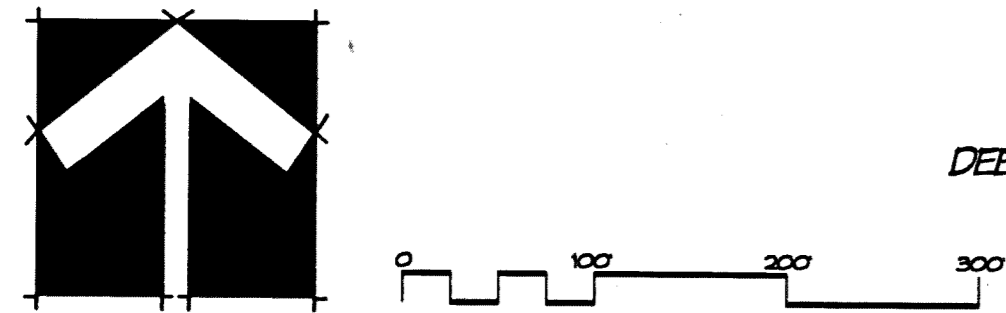
LGND	AMENDMENT	DATE	R/S	VOL. NO.
44	AMENDMENT NO. 43	AUG. 99	755	
45	AMENDMENT NO. 44	AUG. 99	762	
46	AMENDMENT NO. 45	SEPT. 99	720	
47	AMENDMENT NO. 46	OCT. 99	723	
48	AMENDMENT NO. 47	OCT. 99	724	
49	AMENDMENT NO. 48	OCT. 99	722	

NUMBER	BEARS	CENTRAL ANGLE	ARC	TANGENT	CHORD	CHORD BEARING
C-1	610.00	137.28-07	828.48	287.78	426.37	N. 82°-36'-32\"/>

566978
RECEIVED FOR RECORD THIS 22 DAY OF October 1999 AT 10:36 AND RECORDED IN VOLUME 886 PAGE 865 OF GEAGA COUNTY RECORDS OF PLATS
Catherine H. Heiden
CATHERINE H. HEIDEN, RECORDER

I DO HEREBY CERTIFY THESE DRAWINGS SHOW GRAPHICALLY ALL PARTICULARS OF BUILDING 722 OF THE DECLARATION OF CONDOMINIUM FOR THE WOODS AT AUBURN LAKES, INCLUDING THE LAYOUT, LOCATION, DESIGNATION AND DIMENSIONS OF EACH FAMILY UNIT AND BUILDING AS CONSTRUCTED.
STEVEN J. LESSMAN, PROFESSIONAL SURVEYOR NO. 7078

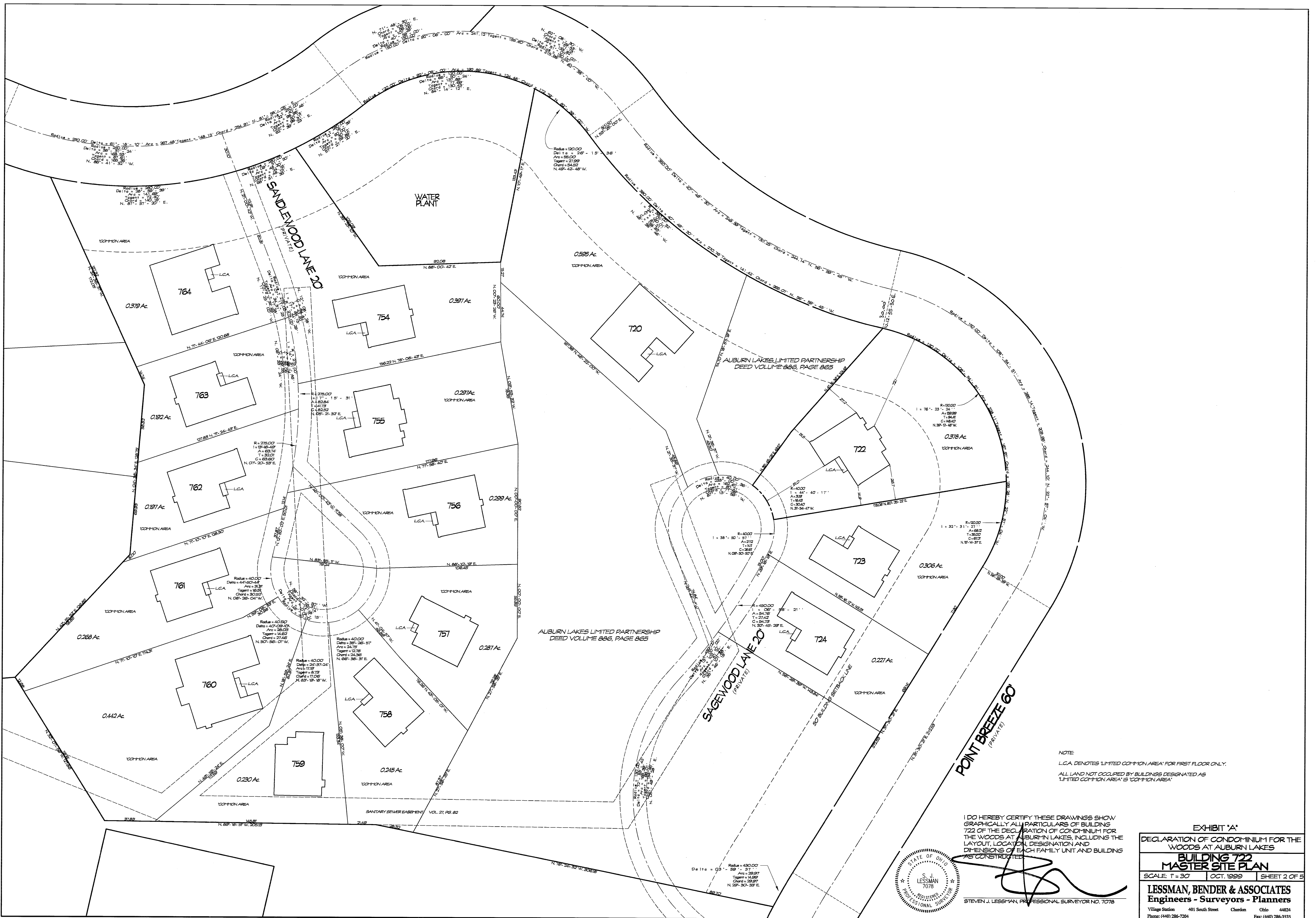
EXHIBIT 'A'
DECLARATION OF CONDOMINIUM FOR THE WOODS AT AUBURN LAKES
MASTER SITE PLAN
SCALE: 1"=100' OCT. 1999 SHEET 1 OF 5
LESSMAN, BENDER & ASSOCIATES
Engineers - Surveyors - Planners
Village Station 401 South Street Canton Ohio 44024
Phone: (440) 286-7204 Fax: (440) 286-3333



J. P. WEINGART
DEED VOL. 800, PG. 919

J. FEHER ET AL.
DEED VOL. 863, PG. 125

29-11



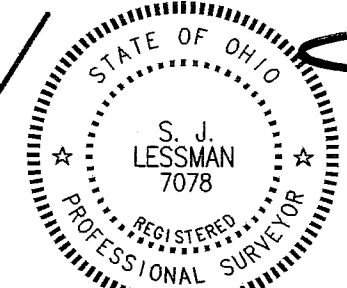
NOTE
 L.C.A. DENOTES 'LIMITED COMMON AREA' FOR FIRST FLOOR ONLY.
 ALL LAND NOT OCCUPIED BY BUILDINGS DESIGNATED AS
 'LIMITED COMMON AREA' IS 'COMMON AREA'

POINT BREEZE 60
 (PRIVATE)

SAGEWOOD LANE 20
 (PRIVATE)

AUBURN LAKES LIMITED PARTNERSHIP
 DEED VOLUME 886, PAGE 865

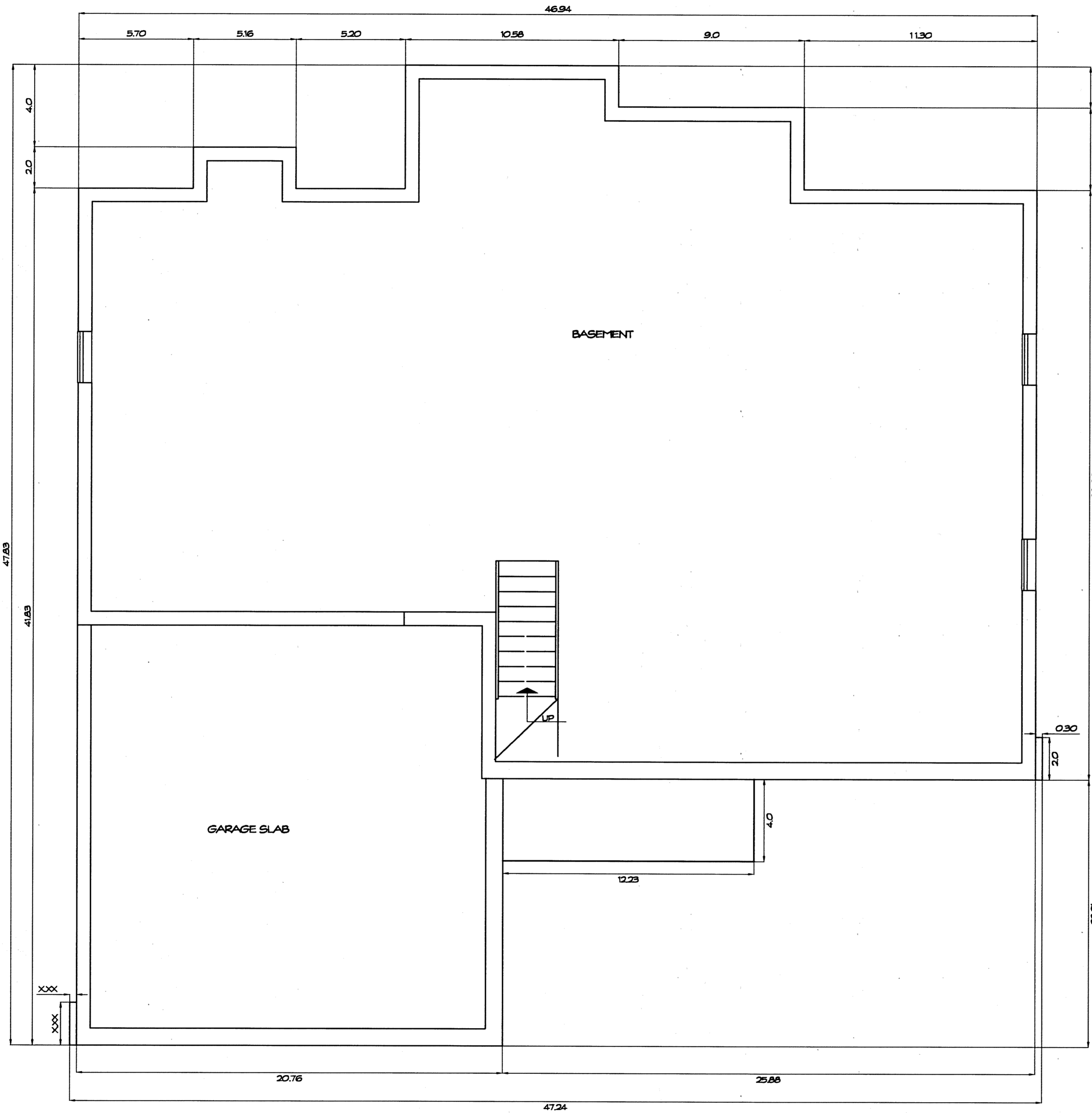
I DO HEREBY CERTIFY THESE DRAWINGS SHOW
 GRAPHICALLY ALL PARTICULARS OF BUILDING
 722 OF THE DECLARATION OF CONDOMINIUM FOR
 THE WOODS AT AUBURN LAKES, INCLUDING THE
 LAYOUT, LOCATION, DESIGNATION AND
 DIMENSIONS OF EACH FAMILY UNIT AND BUILDING
 AS CONSTRUCTED.



STEVEN J. LESSMAN, PROFESSIONAL SURVEYOR NO. 7078

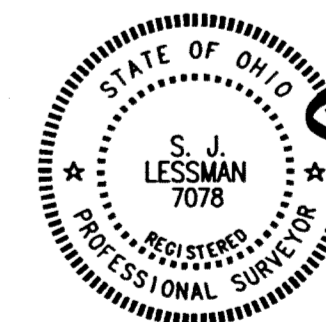
EXHIBIT 'A'
 DECLARATION OF CONDOMINIUM FOR THE
 WOODS AT AUBURN LAKES
BUILDING 722
MASTER SITE PLAN
 SCALE: 1" = 30' OCT. 1999 SHEET 2 OF 5
LESSMAN, BENDER & ASSOCIATES
 Engineers - Surveyors - Planners
 Village Station 401 South Street Chardon Ohio 44024
 Phone: (440) 286-7204 Fax: (440) 286-3535

29-12

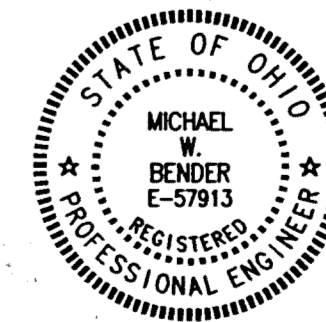


FOUNDATION PLAN
SCALE: 1/4" = 1'-0"

WE DO HEREBY CERTIFY THESE DRAWINGS SHOW GRAPHICALLY ALL PARTICULARS OF BUILDING 722 OF THE DECLARATION OF CONDOMINIUM FOR THE WOODS AT AUBURN LAKES, INCLUDING THE LAYOUT, LOCATION, DESIGNATION AND DIMENSIONS OF EACH FAMILY UNIT AND BUILDING AS CONFORMS.



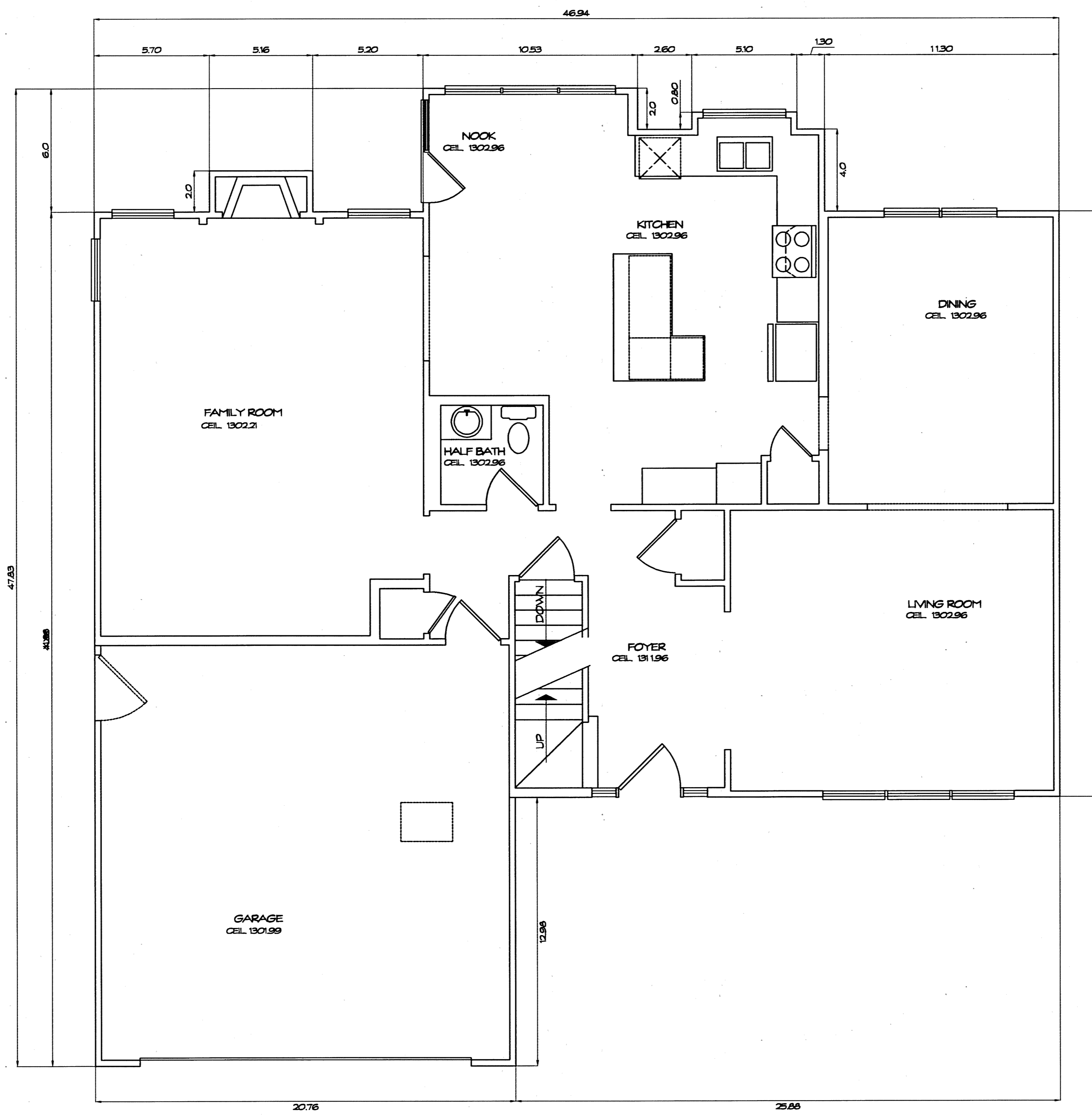
STEVEN J. LESSMAN, PROFESSIONAL SURVEYOR NO. 7078



MICHAEL W. BENDER, PROFESSIONAL ENGINEER NO. E-57913

EXHIBIT 'A'
DECLARATION OF CONDOMINIUM FOR THE WOODS AT AUBURN LAKES
BUILDING 722
SCALE: 1/4" = 1'-0" | OCTOBER, 1999 | SHEET 3 OF 5
LESSMAN, BENDER & ASSOCIATES
Engineers - Surveyors - Planners
Village Station 401 South Street Chardon Ohio 44024
Phone: (440) 286-7204 Fax: (440) 286-3335

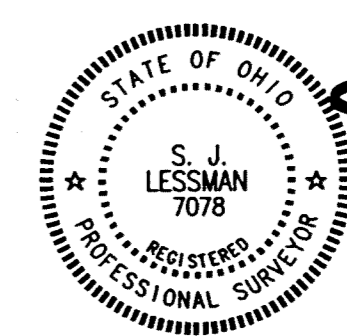
29-13



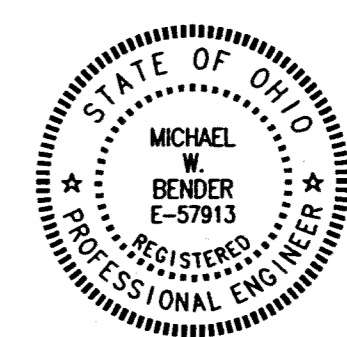
FIRST FLOOR PLAN
1/4" = 1'-0"

UNIT	GARAGE ELEV. FLOOR	ELEV. CEILING	SQ. FT.	BASEMENT ELEV. FLOOR	ELEV. CEILING	SQ. FT.	1ST FLOOR ELEV. FLOOR	ELEV. CEILING	SQ. FT.	2ND FLOOR ELEV. FLOOR	ELEV. CEILING	SQ. FT.	TOTAL SQ. FT.
722	1291.99	1301.99	431	1285.20	1293.00	1288	1293.96	SEE PLAN	1288	1303.96	1311.96	1316	4323

WE DO HEREBY CERTIFY THESE DRAWINGS SHOW GRAPHICALLY ALL PARTICULARS OF BUILDING 722 OF THE DECLARATION OF CONDOMINIUM FOR THE WOODS AT AUBURN LAKES, INCLUDING THE LAYOUT, LOCATION, DESIGNATION AND DIMENSIONS OF EACH FAMILY UNIT AND BUILDING AS CONSTRUCTED.



Steven J. Lessman
STEVEN J. LESSMAN, PROFESSIONAL SURVEYOR NO. 7078



Michael W. Bender
MICHAEL W. BENDER, PROFESSIONAL ENGINEER NO. E-57913

EXHIBIT 'A'

DECLARATION OF CONDOMINIUM FOR THE WOODS AT AUBURN LAKES

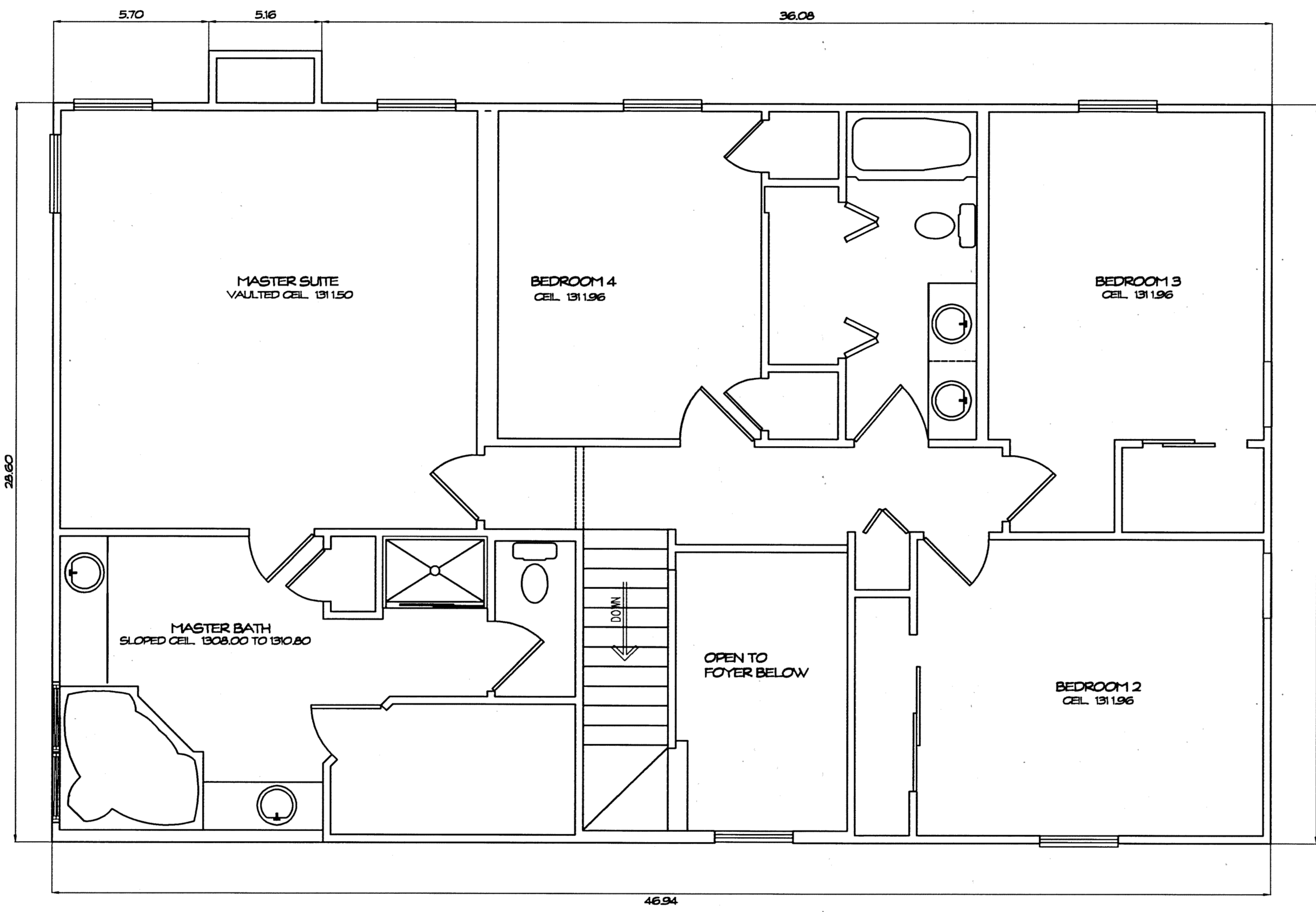
BUILDING 722

SCALE: 1/4" = 1'-0" | OCTOBER, 1999 | SHEET 4 OF 5

LESSMAN, BENDER & ASSOCIATES
Engineers - Surveyors - Planners

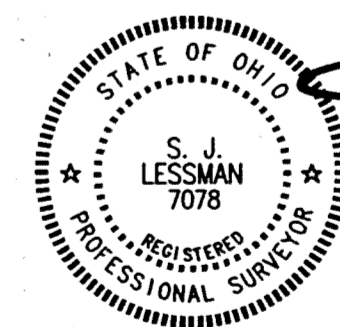
Village Station 401 South Street Chardon Ohio 44024
Phone: (440) 286-7204 Fax: (440) 286-3335

29-14

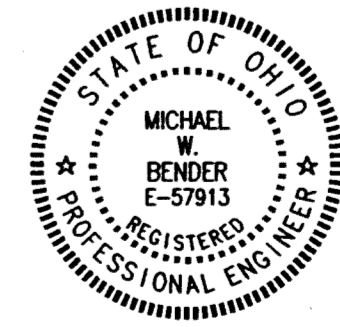


SECOND FLOOR PLAN
1/4" = 1'-0"

WE DO HEREBY CERTIFY THESE DRAWINGS SHOW GRAPHICALLY ALL PARTICULARS OF BUILDING 722 OF THE DECLARATION OF CONDOMINIUM FOR THE WOODS AT AUBURN LAKES, INCLUDING THE LAYOUT, LOCATION, DESIGNATION AND DIMENSIONS OF EACH FAMILY UNIT AND BUILDING AS CONSTRUCTED.



STEVEN J. LESSMAN, PROFESSIONAL SURVEYOR NO. 7078



MICHAEL W. BENDER, PROFESSIONAL ENGINEER NO. 5-57913

EXHIBIT 'A'

DECLARATION OF CONDOMINIUM FOR THE WOODS AT AUBURN LAKES

BUILDING 722

SCALE: 1/4" = 1'-0" | OCTOBER, 1999 | SHEET 5 OF 5

LESSMAN, BENDER & ASSOCIATES
Engineers - Surveyors - Planners

Village Station 401 South Street Chardon Ohio 44024
Phone: (440) 286-7204 Fax: (440) 286-3333

29-15