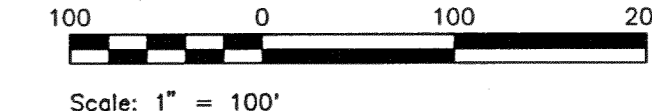


Tony J. Pryately
Pl 1 - Vol. 502, Pg. 216

MINOR SUBDIVISION AND CONSOLIDATION
OF
BOARD OF EDUCATION OF THE
CHARDON LOCAL SCHOOL DISTRICT
FOR
THE VILLAGE OF CHARDON

SITUATED IN THE VILLAGE OF CHARDON,
COUNTY OF GAUGA AND STATE OF OHIO
AND KNOWN AS BEING PART OF ORIGINAL
CHARDON VILLAGE LOT NOS. 132, 133
AND 134 NOW IN.....

THE VILLAGE OF CHARDON
GAUGA COUNTY, OHIO

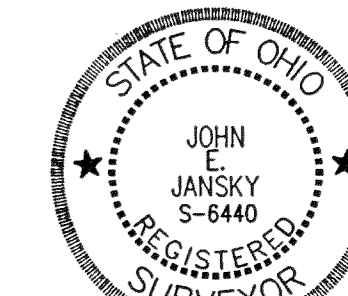


DECEMBER 10, 1998

CERTIFICATION

MONUMENTS WERE FOUND OR SET AS INDICATED HEREON. DIMENSIONS ARE EXPRESSED IN FEET AND DECIMAL PARTS THEREOF, ALL OF WHICH I CERTIFY CORRECT. BASIS OF BEARINGS SHOWN HEREON IS THE NORTHERLY LINE OF CHARDON PARK ALLOTMENT NO. 4 AS RECORDED IN VOLUME 8, PAGE 60 OF GAUGA COUNTY PLAT RECORDS. THIS MAP AND THE SURVEY ON WHICH IT IS BASED WERE MADE IN ACCORDANCE WITH AND SATISFY THE MINIMUM STANDARDS FOR BOUNDARY SURVEYS IN THE STATE OF OHIO, AS CODIFIED IN CHAPTER 4733 OF THE OHIO ADMINISTRATIVE CODE IN EFFECT AT THE TIME.

THE C.W. COURTNEY COMPANY
Consulting Engineers and Surveyors
771 Beta Drive
Cleveland, Ohio 44143
(440) 449-4005



John E. Jansky
John E. Jansky, Ohio Registered Professional Surveyor No. S-6440

ACCEPTANCE

WE, THE UNDERSIGNED OWNERS OF THE PROPERTIES SHOWN AND DESCRIBED HEREON AS THE "BOARD OF EDUCATION OF THE CHARDON LOCAL SCHOOL DISTRICT" AND "VILLAGE OF CHARDON", DO HEREBY ASSENT TO AND ADOPT THIS MINOR SUBDIVISION AND CONSOLIDATION OF SAME TOGETHER WITH EASEMENTS SHOWN AND DESCRIBED HEREON AND DO HEREBY ACKNOWLEDGE THAT THE SAME WAS MADE AT OUR REQUEST.

THE BOARD OF EDUCATION OF THE CHARDON LOCAL SCHOOL DISTRICT:

SIGNED IN THE PRESENCE OF:
Betty Ferrall 2-7-99 DATE
 BETTY FERRALL, PRESIDENT WITNESS
Sandra A. Hayner
Paul J. Pestello 2/7/99 DATE
 PAUL J. PESTELLO, TREASURER WITNESS
Miracle Pullins

THE VILLAGE OF CHARDON, OHIO:

SIGNED IN THE PRESENCE OF:
David Lelko 2/19/99 DATE
 DAVID LEJKO, MANAGER WITNESS
John L. Lank

STATE OF OHIO } S.S.
COUNTY OF GAUGA }

ON THIS 17th DAY OF February, 1999, BEFORE ME, A NOTARY PUBLIC IN AND FOR SAID COUNTY AND STATE, PERSONALLY APPEARED THE ABOVE BETTY FERRALL, PRESIDENT OF THE BOARD OF EDUCATION OF THE CHARDON LOCAL SCHOOL DISTRICT AND PAUL J. PESTELLO, TREASURER OF THE BOARD OF EDUCATION OF THE CHARDON LOCAL SCHOOL DISTRICT, BOTH TO ME PERSONALLY KNOWN, AND ACKNOWLEDGED THEIR SIGNING OF THE FOREGOING ACCEPTANCE, AND THAT THE SAME IS THEIR VOLUNTARY ACT AND DEED BOTH PERSONALLY AND ON BEHALF OF SAID BOARD OF EDUCATION, AND THE VOLUNTARY AND CORPORATE ACT AND DEED OF SAID BOARD OF EDUCATION.

NOTARY PUBLIC *Margaret J. Jelle* MY COMMISSION EXPIRES 3/29/01

STATE OF OHIO } S.S.
COUNTY OF GAUGA }

ON THIS 17th DAY OF February, 1999, BEFORE ME, A NOTARY PUBLIC IN AND FOR SAID COUNTY AND STATE, PERSONALLY APPEARED THE ABOVE DAVID LEJKO, THE MANAGER OF THE VILLAGE OF CHARDON, OHIO, TO ME PERSONALLY KNOWN, AND ACKNOWLEDGED HIS SIGNING OF THE FOREGOING ACCEPTANCE, AND THAT THE SAME IS HIS VOLUNTARY ACT AND DEED BOTH PERSONALLY AND ON BEHALF OF SAID VILLAGE, AND THE VOLUNTARY AND CORPORATE ACT AND DEED OF SAID VILLAGE.

NOTARY PUBLIC *Janice L. Began* MY COMMISSION EXPIRES 9-21-99

557854

COUNTY RECORDS

TRANSFERRED THIS 8th DAY OF JUNE, 1999.
 RECORDED IN PLAT BOOK 28 PAGE NO. 3
 THIS DAY 8th OF June, 1999.
Tracy A. Jemison by *Deborah L. Burt*
 COUNTY AUDITOR
Tracy A. Jemison by *Deborah L. Burt*
 COUNTY RECORDER

Parcel A
34.7651 Ac.

Board of Education of Chardon Local School District
Vol. 247, Pg. 399
#2 Parcel - 20 Ac.

52.5543 Ac.

Parcel B
17.3305 Ac.

Rocky Cellars Subdivision, Phase 2, Vol. 25, Page 104

VILLAGE APPROVALS

APPROVED AS TO FORM:

James M. Gillette 2/19/99
 JAMES M. GILLETTE, LAW DIRECTOR DATE

APPROVAL BY PLANNING COMMISSION:

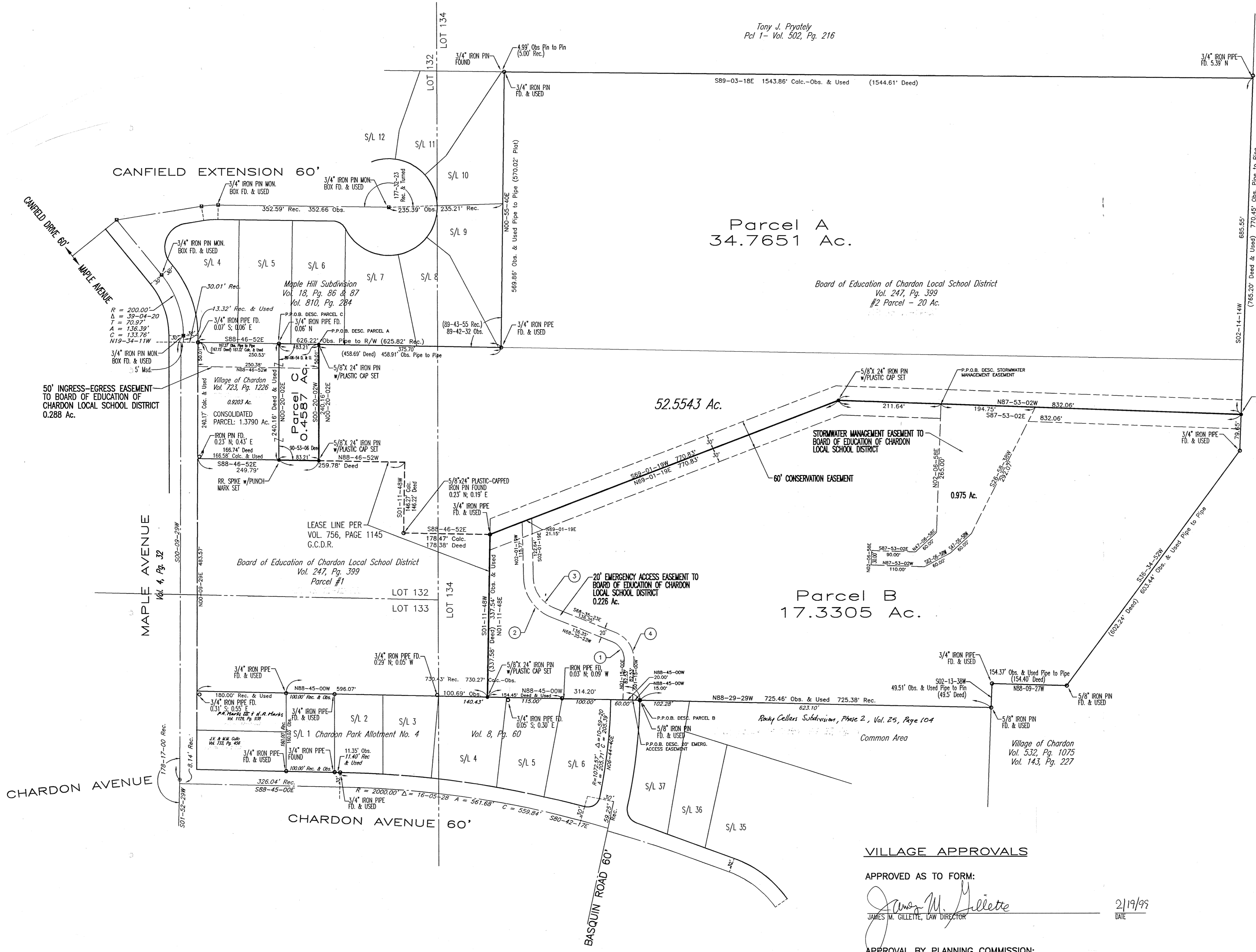
THIS MINOR SUBDIVISION AND CONSOLIDATION HAS BEEN APPROVED BY THE PLANNING COMMISSION OF THE VILLAGE OF CHARDON, OHIO THIS 27th DAY OF DECEMBER, 1998.

Kenneth R. Miller
 KENNETH R. MILLER, CHAIRMAN

Donna M. Abbott
 DONNA M. ABBOTT, SECRETARY

CURVE DATA

- 1 R = 40.00' Δ = 69-50-23 A = 48.76' T = 27.93' C = 45.73' N30-40-12W
- 2 R = 90.00' Δ = 66-34-04 A = 81.33' T = 45.95' C = 76.83' S35-18-21E
- 3 R = 40.00' Δ = 69-50-23 A = 48.76' T = 27.93' C = 45.73' N30-40-12W
- 4 R = 90.00' Δ = 66-34-04 A = 81.33' T = 45.95' C = 76.83' S35-18-21E



50' INGRESS-EGRESS EASEMENT TO BOARD OF EDUCATION OF CHARDON LOCAL SCHOOL DISTRICT 0.288 Ac.

52.5543 Ac.

0.226 Ac.

0.975 Ac.

60' CONSERVATION EASEMENT

STORMWATER MANAGEMENT EASEMENT TO BOARD OF EDUCATION OF CHARDON LOCAL SCHOOL DISTRICT

20' EMERGENCY ACCESS EASEMENT TO BOARD OF EDUCATION OF CHARDON LOCAL SCHOOL DISTRICT 0.226 Ac.

60' CONSERVATION EASEMENT

STORMWATER MANAGEMENT EASEMENT TO BOARD OF EDUCATION OF CHARDON LOCAL SCHOOL DISTRICT

20' EMERGENCY ACCESS EASEMENT TO BOARD OF EDUCATION OF CHARDON LOCAL SCHOOL DISTRICT 0.226 Ac.

60' CONSERVATION EASEMENT

STORMWATER MANAGEMENT EASEMENT TO BOARD OF EDUCATION OF CHARDON LOCAL SCHOOL DISTRICT

20' EMERGENCY ACCESS EASEMENT TO BOARD OF EDUCATION OF CHARDON LOCAL SCHOOL DISTRICT 0.226 Ac.

60' CONSERVATION EASEMENT

STORMWATER MANAGEMENT EASEMENT TO BOARD OF EDUCATION OF CHARDON LOCAL SCHOOL DISTRICT

20' EMERGENCY ACCESS EASEMENT TO BOARD OF EDUCATION OF CHARDON LOCAL SCHOOL DISTRICT 0.226 Ac.

60' CONSERVATION EASEMENT

STORMWATER MANAGEMENT EASEMENT TO BOARD OF EDUCATION OF CHARDON LOCAL SCHOOL DISTRICT

20' EMERGENCY ACCESS EASEMENT TO BOARD OF EDUCATION OF CHARDON LOCAL SCHOOL DISTRICT 0.226 Ac.

60' CONSERVATION EASEMENT

STORMWATER MANAGEMENT EASEMENT TO BOARD OF EDUCATION OF CHARDON LOCAL SCHOOL DISTRICT

20' EMERGENCY ACCESS EASEMENT TO BOARD OF EDUCATION OF CHARDON LOCAL SCHOOL DISTRICT 0.226 Ac.

60' CONSERVATION EASEMENT

STORMWATER MANAGEMENT EASEMENT TO BOARD OF EDUCATION OF CHARDON LOCAL SCHOOL DISTRICT

20' EMERGENCY ACCESS EASEMENT TO BOARD OF EDUCATION OF CHARDON LOCAL SCHOOL DISTRICT 0.226 Ac.

60' CONSERVATION EASEMENT

STORMWATER MANAGEMENT EASEMENT TO BOARD OF EDUCATION OF CHARDON LOCAL SCHOOL DISTRICT

20' EMERGENCY ACCESS EASEMENT TO BOARD OF EDUCATION OF CHARDON LOCAL SCHOOL DISTRICT 0.226 Ac.

60' CONSERVATION EASEMENT

STORMWATER MANAGEMENT EASEMENT TO BOARD OF EDUCATION OF CHARDON LOCAL SCHOOL DISTRICT

20' EMERGENCY ACCESS EASEMENT TO BOARD OF EDUCATION OF CHARDON LOCAL SCHOOL DISTRICT 0.226 Ac.

60' CONSERVATION EASEMENT

STORMWATER MANAGEMENT EASEMENT TO BOARD OF EDUCATION OF CHARDON LOCAL SCHOOL DISTRICT

20' EMERGENCY ACCESS EASEMENT TO BOARD OF EDUCATION OF CHARDON LOCAL SCHOOL DISTRICT 0.226 Ac.

60' CONSERVATION EASEMENT

STORMWATER MANAGEMENT EASEMENT TO BOARD OF EDUCATION OF CHARDON LOCAL SCHOOL DISTRICT

20' EMERGENCY ACCESS EASEMENT TO BOARD OF EDUCATION OF CHARDON LOCAL SCHOOL DISTRICT 0.226 Ac.

60' CONSERVATION EASEMENT

STORMWATER MANAGEMENT EASEMENT TO BOARD OF EDUCATION OF CHARDON LOCAL SCHOOL DISTRICT

20' EMERGENCY ACCESS EASEMENT TO BOARD OF EDUCATION OF CHARDON LOCAL SCHOOL DISTRICT 0.226 Ac.

60' CONSERVATION EASEMENT

STORMWATER MANAGEMENT EASEMENT TO BOARD OF EDUCATION OF CHARDON LOCAL SCHOOL DISTRICT

20' EMERGENCY ACCESS EASEMENT TO BOARD OF EDUCATION OF CHARDON LOCAL SCHOOL DISTRICT 0.226 Ac.

60' CONSERVATION EASEMENT

STORMWATER MANAGEMENT EASEMENT TO BOARD OF EDUCATION OF CHARDON LOCAL SCHOOL DISTRICT

20' EMERGENCY ACCESS EASEMENT TO BOARD OF EDUCATION OF CHARDON LOCAL SCHOOL DISTRICT 0.226 Ac.

60' CONSERVATION EASEMENT

STORMWATER MANAGEMENT EASEMENT TO BOARD OF EDUCATION OF CHARDON LOCAL SCHOOL DISTRICT

20' EMERGENCY ACCESS EASEMENT TO BOARD OF EDUCATION OF CHARDON LOCAL SCHOOL DISTRICT 0.226 Ac.

60' CONSERVATION EASEMENT

STORMWATER MANAGEMENT EASEMENT TO BOARD OF EDUCATION OF CHARDON LOCAL SCHOOL DISTRICT

20' EMERGENCY ACCESS EASEMENT TO BOARD OF EDUCATION OF CHARDON LOCAL SCHOOL DISTRICT 0.226 Ac.

60' CONSERVATION EASEMENT

STORMWATER MANAGEMENT EASEMENT TO BOARD OF EDUCATION OF CHARDON LOCAL SCHOOL DISTRICT

20' EMERGENCY ACCESS EASEMENT TO BOARD OF EDUCATION OF CHARDON LOCAL SCHOOL DISTRICT 0.226 Ac.

60' CONSERVATION EASEMENT

STORMWATER MANAGEMENT EASEMENT TO BOARD OF EDUCATION OF CHARDON LOCAL SCHOOL DISTRICT

20' EMERGENCY ACCESS EASEMENT TO BOARD OF EDUCATION OF CHARDON LOCAL SCHOOL DISTRICT 0.226 Ac.

60' CONSERVATION EASEMENT

STORMWATER MANAGEMENT EASEMENT TO BOARD OF EDUCATION OF CHARDON LOCAL SCHOOL DISTRICT

20' EMERGENCY ACCESS EASEMENT TO BOARD OF EDUCATION OF CHARDON LOCAL SCHOOL DISTRICT 0.226 Ac.

60' CONSERVATION EASEMENT

STORMWATER MANAGEMENT EASEMENT TO BOARD OF EDUCATION OF CHARDON LOCAL SCHOOL DISTRICT

20' EMERGENCY ACCESS EASEMENT TO BOARD OF EDUCATION OF CHARDON LOCAL SCHOOL DISTRICT 0.226 Ac.

60' CONSERVATION EASEMENT

STORMWATER MANAGEMENT EASEMENT TO BOARD OF EDUCATION OF CHARDON LOCAL SCHOOL DISTRICT

20' EMERGENCY ACCESS EASEMENT TO BOARD OF EDUCATION OF CHARDON LOCAL SCHOOL DISTRICT 0.226 Ac.

60' CONSERVATION EASEMENT

STORMWATER MANAGEMENT EASEMENT TO BOARD OF EDUCATION OF CHARDON LOCAL SCHOOL DISTRICT

20' EMERGENCY ACCESS EASEMENT TO BOARD OF EDUCATION OF CHARDON LOCAL SCHOOL DISTRICT 0.226 Ac.

60' CONSERVATION EASEMENT

STORMWATER MANAGEMENT EASEMENT TO BOARD OF EDUCATION OF CHARDON LOCAL SCHOOL DISTRICT

20' EMERGENCY ACCESS EASEMENT TO BOARD OF EDUCATION OF CHARDON LOCAL SCHOOL DISTRICT 0.226 Ac.

60' CONSERVATION EASEMENT

STORMWATER MANAGEMENT EASEMENT TO BOARD OF EDUCATION OF CHARDON LOCAL SCHOOL DISTRICT

20' EMERGENCY ACCESS EASEMENT TO BOARD OF EDUCATION OF CHARDON LOCAL SCHOOL DISTRICT 0.226 Ac.

60' CONSERVATION EASEMENT

STORMWATER MANAGEMENT EASEMENT TO BOARD OF EDUCATION OF CHARDON LOCAL SCHOOL DISTRICT

20' EMERGENCY ACCESS EASEMENT TO BOARD OF EDUCATION OF CHARDON LOCAL SCHOOL DISTRICT 0.226 Ac.

60' CONSERVATION EASEMENT

STORMWATER MANAGEMENT EASEMENT TO BOARD OF EDUCATION OF CHARDON LOCAL SCHOOL DISTRICT

20' EMERGENCY ACCESS EASEMENT TO BOARD OF EDUCATION OF CHARDON LOCAL SCHOOL DISTRICT 0.226 Ac.

60' CONSERVATION EASEMENT

STORMWATER MANAGEMENT EASEMENT TO BOARD OF EDUCATION OF CHARDON LOCAL SCHOOL DISTRICT

20' EMERGENCY ACCESS EASEMENT TO BOARD OF EDUCATION OF CHARDON LOCAL SCHOOL DISTRICT 0.226 Ac.

60' CONSERVATION EASEMENT

STORMWATER MANAGEMENT EASEMENT TO BOARD OF EDUCATION OF CHARDON LOCAL SCHOOL DISTRICT

20' EMERGENCY ACCESS EASEMENT TO BOARD OF EDUCATION OF CHARDON LOCAL SCHOOL DISTRICT 0.226 Ac.

60' CONSERVATION EASEMENT

STORMWATER MANAGEMENT EASEMENT TO BOARD OF EDUCATION OF CHARDON LOCAL SCHOOL DISTRICT

20' EMERGENCY ACCESS EASEMENT TO BOARD OF EDUCATION OF CHARDON LOCAL SCHOOL DISTRICT 0.226 Ac.

60' CONSERVATION EASEMENT

STORMWATER MANAGEMENT EASEMENT TO BOARD OF EDUCATION OF CHARDON LOCAL SCHOOL DISTRICT

20' EMERGENCY ACCESS EASEMENT TO BOARD OF EDUCATION OF CHARDON LOCAL SCHOOL DISTRICT 0.226 Ac.

60' CONSERVATION EASEMENT

STORMWATER MANAGEMENT EASEMENT TO BOARD OF EDUCATION OF CHARDON LOCAL SCHOOL DISTRICT

20' EMERGENCY ACCESS EASEMENT TO BOARD OF EDUCATION OF CHARDON LOCAL SCHOOL DISTRICT 0.226 Ac.

60' CONSERVATION EASEMENT

STORMWATER MANAGEMENT EASEMENT TO BOARD OF EDUCATION OF CHARDON LOCAL SCHOOL DISTRICT

20' EMERGENCY ACCESS EASEMENT TO BOARD OF EDUCATION OF CHARDON LOCAL SCHOOL DISTRICT 0.226 Ac.

60' CONSERVATION EASEMENT

STORMWATER MANAGEMENT EASEMENT TO BOARD OF EDUCATION OF CHARDON LOCAL SCHOOL DISTRICT

20' EMERGENCY ACCESS EASEMENT TO BOARD OF EDUCATION OF CHARDON LOCAL SCHOOL DISTRICT 0.226 Ac.

60' CONSERVATION EASEMENT

STORMWATER MANAGEMENT EASEMENT TO BOARD OF EDUCATION OF CHARDON LOCAL SCHOOL DISTRICT

20' EMERGENCY ACCESS EASEMENT TO BOARD OF EDUCATION OF CHARDON LOCAL SCHOOL DISTRICT 0.226 Ac.

60' CONSERVATION EASEMENT

STORMWATER MANAGEMENT EASEMENT TO BOARD OF EDUCATION OF CHARDON LOCAL SCHOOL DISTRICT

20' EMERGENCY ACCESS EASEMENT TO BOARD OF EDUCATION OF CHARDON LOCAL SCHOOL DISTRICT 0.226 Ac.

60' CONSERVATION EASEMENT

STORMWATER MANAGEMENT EASEMENT TO BOARD OF EDUCATION OF CHARDON LOCAL SCHOOL DISTRICT

20' EMERGENCY ACCESS EASEMENT TO BOARD OF EDUCATION OF CHARDON LOCAL SCHOOL DISTRICT 0.226 Ac.

60' CONSERVATION EASEMENT

STORMWATER MANAGEMENT EASEMENT TO BOARD OF EDUCATION OF CHARDON LOCAL SCHOOL DISTRICT

20' EMERGENCY ACCESS EASEMENT TO BOARD OF EDUCATION OF CHARDON LOCAL SCHOOL DISTRICT 0.226 Ac.

60' CONSERVATION EASEMENT

STORMWATER MANAGEMENT EASEMENT TO BOARD OF EDUCATION OF CHARDON LOCAL SCHOOL DISTRICT

20' EMERGENCY ACCESS EASEMENT TO BOARD OF EDUCATION OF CHARDON LOCAL SCHOOL DISTRICT 0.226 Ac.

60' CONSERVATION EASEMENT

STORMWATER MANAGEMENT EASEMENT TO BOARD OF EDUCATION OF CHARDON LOCAL SCHOOL DISTRICT

20' EMERGENCY ACCESS EASEMENT TO BOARD OF EDUCATION OF CHARDON LOCAL SCHOOL DISTRICT 0.226 Ac.

60' CONSERVATION EASEMENT

STORMWATER MANAGEMENT EASEMENT TO BOARD OF EDUCATION OF CHARDON LOCAL SCHOOL DISTRICT

20' EMERGENCY ACCESS EASEMENT TO BOARD OF EDUCATION OF CHARDON LOCAL SCHOOL DISTRICT 0.226 Ac.

60' CONSERVATION EASEMENT

STORMWATER MANAGEMENT EASEMENT TO BOARD OF EDUCATION OF CHARDON LOCAL SCHOOL DISTRICT

20' EMERGENCY ACCESS EASEMENT TO BOARD OF EDUCATION OF CHARDON LOCAL SCHOOL DISTRICT 0.226 Ac.

60' CONSERVATION EASEMENT

STORMWATER MANAGEMENT EASEMENT TO BOARD OF EDUCATION OF CHARDON LOCAL SCHOOL DISTRICT

20' EMERGENCY ACCESS EASEMENT TO BOARD OF EDUCATION OF CHARDON LOCAL SCHOOL DISTRICT 0.226 Ac.

60' CONSERVATION EASEMENT

STORMWATER MANAGEMENT EASEMENT TO BOARD OF EDUCATION OF CHARDON LOCAL SCHOOL DISTRICT

20' EMERGENCY ACCESS EASEMENT TO BOARD OF EDUCATION OF CHARDON LOCAL SCHOOL DISTRICT 0.226 Ac.

60' CONSERVATION EASEMENT

STORMWATER MANAGEMENT EASEMENT TO BOARD OF EDUCATION OF CHARDON LOCAL SCHOOL DISTRICT

20' EMERGENCY ACCESS EASEMENT TO BOARD OF EDUCATION OF CHARDON LOCAL SCHOOL DISTRICT 0.226 Ac.

60' CONSERVATION EASEMENT

STORMWATER MANAGEMENT EASEMENT TO BOARD OF EDUCATION OF CHARDON LOCAL SCHOOL DISTRICT

20' EMERGENCY ACCESS EASEMENT TO BOARD OF EDUCATION OF CHARDON LOCAL SCHOOL DISTRICT 0.226 Ac.

60' CONSERVATION EASEMENT

STORMWATER MANAGEMENT EASEMENT TO BOARD OF EDUCATION OF CHARDON LOCAL SCHOOL DISTRICT

20' EMERGENCY ACCESS EASEMENT TO BOARD OF EDUCATION OF CHARDON LOCAL SCHOOL DISTRICT 0.226 Ac.

60' CONSERVATION EASEMENT

STORMWATER MANAGEMENT EASEMENT TO BOARD OF EDUCATION OF CHARDON LOCAL SCHOOL DISTRICT

20' EMERGENCY ACCESS EASEMENT TO BOARD OF EDUCATION OF CHARDON LOCAL SCHOOL DISTRICT 0.226 Ac.

60' CONSERVATION EASEMENT

STORMWATER MANAGEMENT EASEMENT TO BOARD OF EDUCATION OF CHARDON LOCAL SCHOOL DISTRICT

20' EMERGENCY ACCESS EASEMENT TO BOARD OF EDUCATION OF CHARDON LOCAL SCHOOL DISTRICT 0.226 Ac.

60' CONSERVATION EASEMENT

STORMWATER MANAGEMENT EASEMENT TO BOARD OF EDUCATION OF CHARDON LOCAL SCHOOL DISTRICT

20' EMERGENCY ACCESS EASEMENT TO BOARD OF EDUCATION OF CHARDON LOCAL SCHOOL DISTRICT 0.226 Ac.

60' CONSERVATION EASEMENT

STORMWATER MANAGEMENT EASEMENT TO BOARD OF EDUCATION OF CHARDON LOCAL SCHOOL DISTRICT

20' EMERGENCY ACCESS EASEMENT TO BOARD OF EDUCATION OF CHARDON LOCAL SCHOOL DISTRICT 0.226 Ac.

60' CONSERVATION EASEMENT