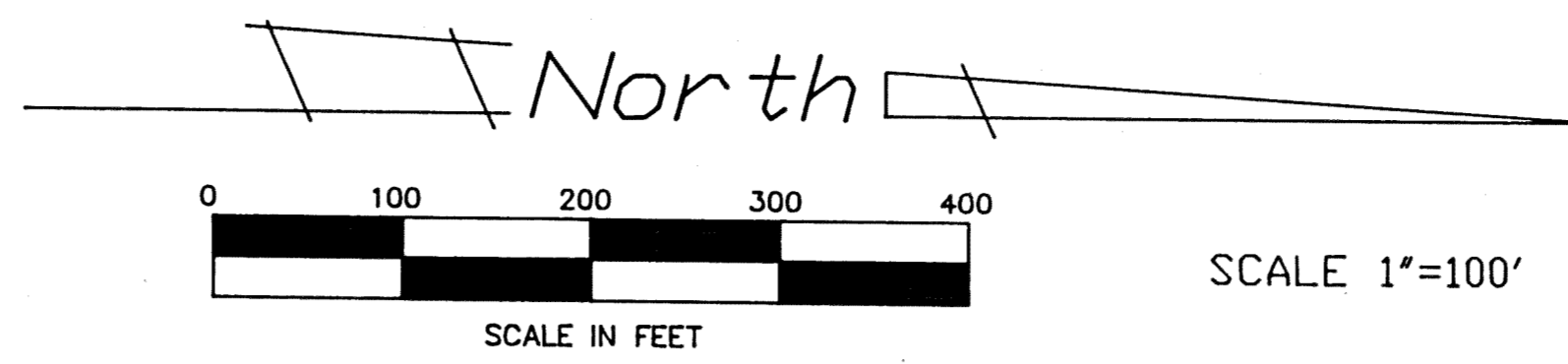
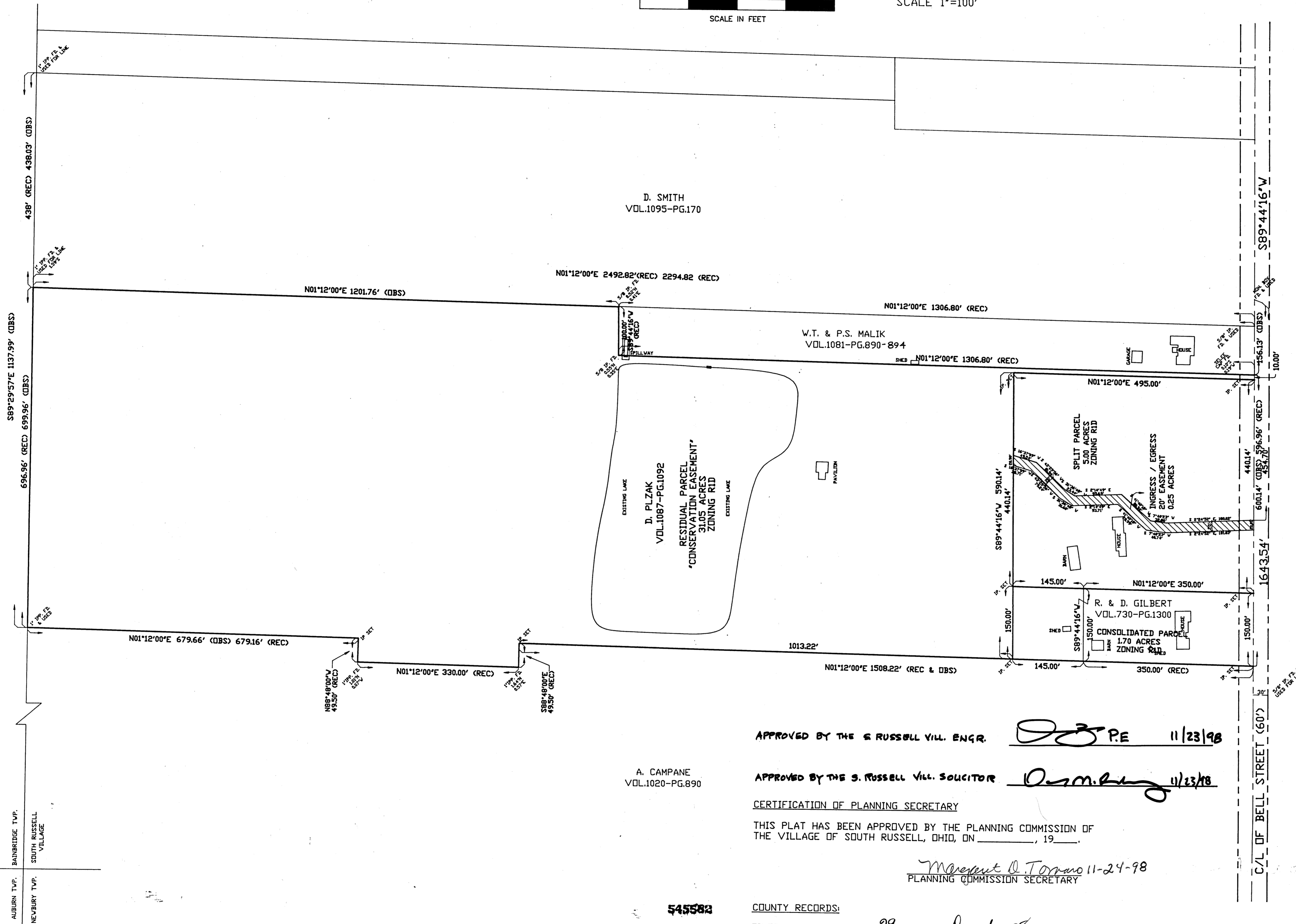


J.P. & J. M. BLECHSCHMID  
VDL.1039-PG.1107



AUBURN TWP. NEVBURY TWP. SOUTH RUSSELL VILLAGE

A. CAMPANE  
VDL.1020-PG.890

APPROVED BY THE S. RUSSELL VILL. ENGR. *[Signature]* P.E. 11/23/98

APPROVED BY THE S. RUSSELL VILL. SOLICITOR *[Signature]* 11/23/98

CERTIFICATION OF PLANNING SECRETARY  
THIS PLAT HAS BEEN APPROVED BY THE PLANNING COMMISSION OF THE VILLAGE OF SOUTH RUSSELL, OHIO, ON \_\_\_\_\_, 19\_\_\_\_.

*[Signature]* 11-24-98  
PLANNING COMMISSION SECRETARY

545582

COUNTY RECORDS:  
FILED FOR RECORD THIS 29 DAY OF December 19 98  
RECORDED IN PLAT BOOK VDL. 27 PAGE 80  
THIS 29 DAY OF December 19 98

*[Signature]*  
GEAUGA COUNTY RECORDER

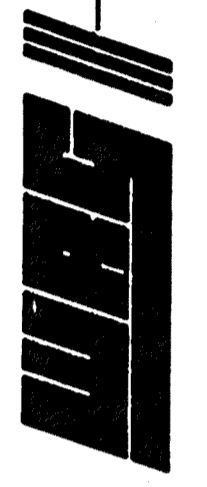
TRANSPERSED THIS 29th DAY OF Dec. 1998  
*[Signature]*  
GEAUGA CO. AUDITOR



27-80

SHEET NO.	REVISIONS	
	DATE	
TITLE	BOUNDARY SURVEY/ LOT SPLIT SITUATED IN THE VILLAGE OF SOUTH RUSSELL COUNTY OF GEauga, STATE OF OHIO AND KNOWN AS BEING PART OF LOT 1, TRACT 3	
DATE	DRAWN BY	CHECKED BY
17 OCT 98	DJG	TGG
	SCALE 1" = 100'	
CHAGRIN RIVER LAND CONSERVANCY PLZAK CONSERVATION EASEMENT 1800 BELL ST. CHAGRIN FALLS, OHIO 44042		

**WILLIAM R. GRAY ASSOCIATES, INC.**  
7519 MENTOR AVE. MENTOR, OHIO 44060  
(440) 946-1616



STATE OF OHIO  
REGISTERED PROFESSIONAL SURVEYOR  
WILLIAM R. GRAY ASSOCIATES, INC.  
7519 MENTOR AVE. MENTOR, OHIO 44060  
(440) 946-1616