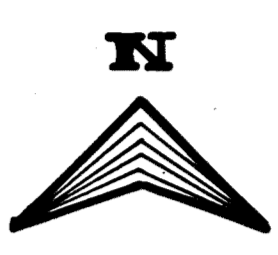
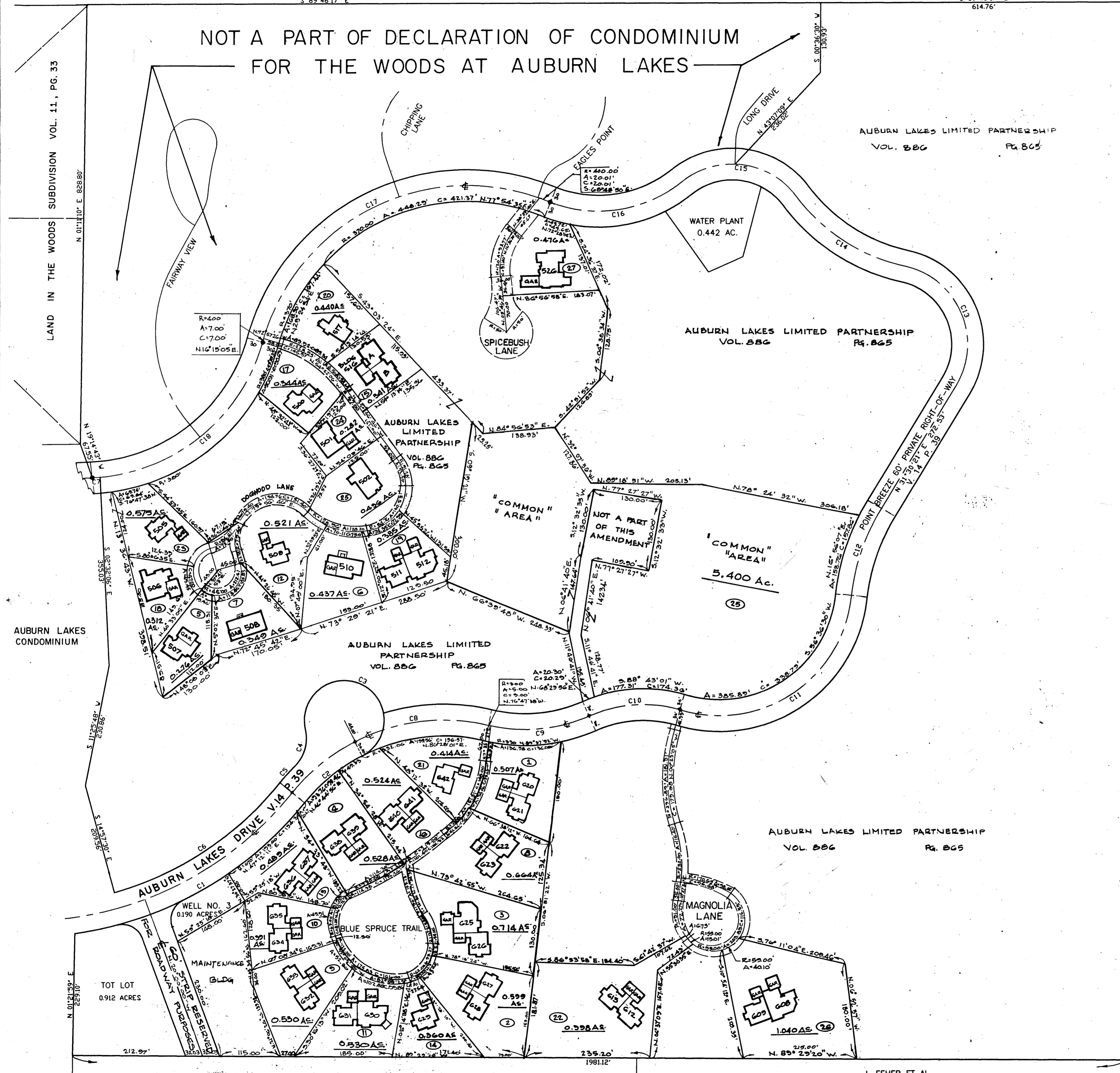


# DECLARATION OF CONDOMINIUM FOR THE WOODS AT AUBURN LAKES

SITUATED IN THE TOWNSHIP OF AUBURN, COUNTY OF GAUGA AND STATE OF OHIO AND KNOWN AS BEING PART OF ORIGINAL AUBURN TOWNSHIP, SECTION ONE, TRACT TWO AND CONTAINING 83.386 ACRES OF LAND

NOT A PART OF DECLARATION OF CONDOMINIUM FOR THE WOODS AT AUBURN LAKES



AUBURN INDUSTRIAL PARK PARTNERSHIP 1 VOL. 647 P. 663

LEGEND	AMENDMENT	DATE	BLDG NO.	VOL. NO.
(1)	Original	FEB. 95	620	V. 24
(2)	AMENDMENT #1	MAY, 95	621	V. 22
(3)	AMENDMENT #2	JULY, 95	622	V. 109
(4)	AMENDMENT #3	AUGUST, 95	623	V. 115
(5)	AMENDMENT #4	SEPT, 95	507	V. 23
(6)	AMENDMENT #5	SEPT. 95	510	V. 23
(7)	AMENDMENT #6	NOV. 95	500	V. 23
(8)	AMENDMENT #7	FEB. 96	511	V. 23
(9)	AMENDMENT #8	APRIL, 96	523	V. 23
(10)	AMENDMENT #9	APRIL, 96	522	V. 23
(11)	AMENDMENT #10	MAY, 96	624	V. 23
(12)	AMENDMENT #11	JULY, 96	509	V. 23
(13)	AMENDMENT #12	JULY, 96	527	V. 24
(14)	AMENDMENT #13	AUG, 96	625	V. 24
(15)	AMENDMENT #14	OCT, 96	512	V. 24
(16)	AMENDMENT #15	OCT, 96	540	V. 24
(17)	AMENDMENT #16	OCT, 96	500	V. 24
(18)	AMENDMENT #17	NOV, 96	506	V. 24
(19)	AMENDMENT #18	JAN. 97	512	V. 25
(20)	AMENDMENT #19	APRIL, 97	517	V. 25
(21)	AMENDMENT #20	MAY, 97	642	V. 25
(22)	AMENDMENT #21	MAY, 97	612	V. 25
(23)	AMENDMENT #22	MAY, 97	605	V. 25
(24)	AMENDMENT #23	JAN. 98	501	V. 24
(25)	AMENDMENT #24	MAR. 98	502	V. 24
(26)	AMENDMENT #25	APR. 98	528	V. 24
(27)	AMENDMENT #26	MAY, 98	526	V. 24

LEGEND	AMENDMENT	DATE	BLDG NO.	VOL. NO.

THE QUEENS DEVELOPMENT CO. VOL. 1005 P. 1142

BOUNDARY CURVE TABLE

CURVE#	RADIUS	LENGTH	CHORD	CHORD BEARING	DELTA ANGLE	TANGENT
C1	670.00'	508.49'	496.37'	N 60°36'26"E	43°29'01"	267.19'
C2	340.69'	143.09'	142.04'	N 50°53'50"E	24°03'51"	72.62'
C3	75.00'	334.60'	118.51'	S 64°36'49"E	259°37'01"	96.66'
C4	75.00'	75.70'	75.83'	N 16°13'47"E	57°48'51"	41.43'
C5	400.69'	43.91'	43.89'	N 42°00'18"E	06°16'45"	21.98'
C6	610.00'	378.28'	372.82'	N 86°15'06"E	35°31'52"	195.45'
C7	350.00'	14.82'	14.82'	N 86°15'06"E	02°25'34"	7.41'

CENTERLINE CURVE TABLE

CURVE#	RADIUS	LENGTH	CHORD	CHORD BEARING	DELTA ANGLE	TANGENT
C8	362.06'	257.53'	252.14'	N 83°15'23"E	40°45'16"	134.49'
C9	300.00'	195.10'	191.68'	N 85°03'11"E	37°15'11"	101.14'
C10	250.00'	176.44'	172.80'	N 86°38'25"E	40°26'10"	92.07'
C11	200.00'	158.51'	154.42'	N 86°38'30"E	100°30'00"	300.59'
C12	400.00'	175.56'	174.16'	N 18°55'56"E	25°08'51"	89.22'
C13	150.00'	285.14'	244.10'	S 22°57'04"E	108°54'51"	209.96'
C14	350.00'	249.39'	244.14'	S 56°59'45"E	40°48'30"	130.25'
C15	150.00'	241.12'	215.98'	S 82°36'00"E	92°06'00"	155.60'
C16	250.00'	267.48'	254.91'	N 81°58'05"E	61°18'10"	148.15'
C17	400.00'	676.28'	638.56'	N 64°11'05"E	96°52'10"	451.08'
C18	350.00'	423.32'	397.98'	S 50°23'58"E	69°17'53"	241.89'

R.L. & J.F. SIMPSON VOL. 911 PG. 698

*Amended in Record this 20th day of May 1998 at 9:38 AM and Recorded in Gauga County Plat Vol. 911, Page 53. Catherine H. Hindman, Recorder*

DECLARATION OF CONDOMINIUM FOR THE WOODS AT AUBURN LAKES

**MASTER SITE PLAN**

SCALE: 1" = 100' FEB, 1995 SHEET 1 OF 4

BRAUN-PRENOSIL ASSOC., INC.  
ENGINEERS-SURVEYORS CHAGRIN FALLS, OHIO

26-53

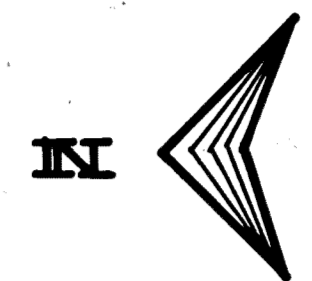
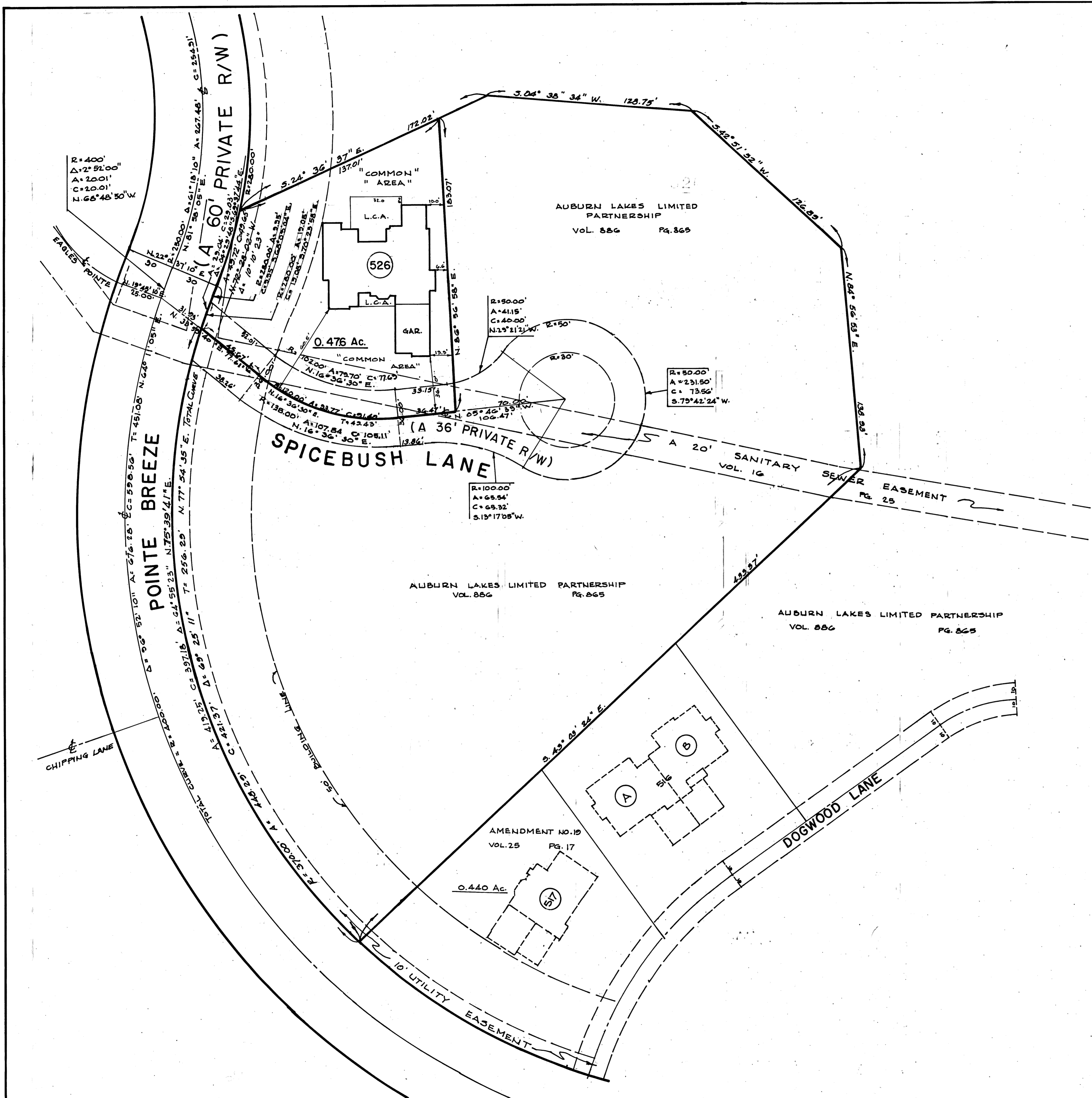


EXHIBIT "A"  
**DECLARATION OF CONDOMINIUM FOR  
 THE WOODS AT AUBURN LAKES**

SITUATED IN THE TOWNSHIP OF AUBURN, COUNTY OF  
 GEALGA AND STATE OF OHIO AND KNOWN AS BEING  
 PART OF ORIGINAL AUBURN TOWNSHIP SECTION ONE  
 TRACT TWO AND CONTAINING 0.476 ACRES OF LAND.

I DO HEREBY CERTIFY THE BUILDING OF THE DECLARATION  
 OF CONDOMINIUM FOR THE WOODS AT AUBURN LAKES IS  
 LOCATED AS SHOWN ON THIS DRAWING, CONSISTING OF  
 SHEETS 1 THRU 2 AND THE ELEVATIONS ABOVE SEA LEVEL  
 ARE CORRECT AND SAID DRAWINGS ACCURATLY SHOW THE  
 BUILDING AS CONSTRUCTED TO THE BEST OF MY  
 KNOWLEDGE AND BELIEF.

Ronald A. Nuske 5-15-98  
 RONALD A. NUSKE REG. SURVEYOR #5913

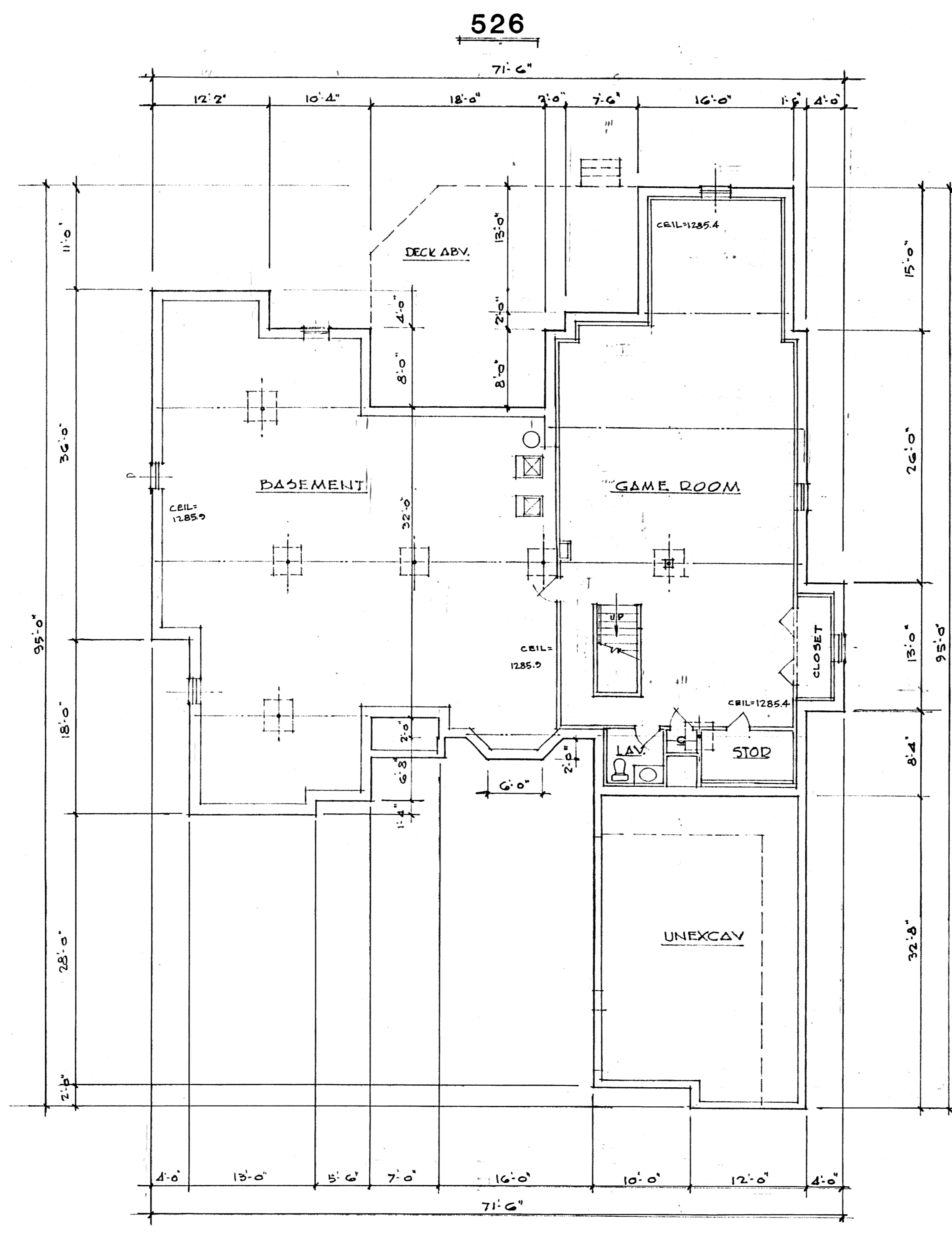


NOTE: L.C.A. DENOTES "LIMITED COMMON AREA"  
 FOR FIRST FLOOR ONLY.  
 ALL LAND NOT OCCUPIED BY BUILDINGS  
 DESIGNATED AS "LIMITED COMMON AREA"  
 IS "COMMON AREA"

DECLARATION OF CONDOMINIUM FOR THE WOODS AT AUBURN LAKES		
<b>BUILDING 526 LOCATION PLAT</b>		
SCALE 1"=30'	MAY, 1998	SHEET 2 of 4
BRAUN - PRENOSIL ASSOC. INC. ENGINEERS - SURVEYORS Chagrin Falls, Ohio		

26-54

PLANNED CORPORATION • RAVEN CALIFORNIA  
 REGISTERED NUMBER 07348  
 REGISTERED OFFICE OF RECORDS IN THE FIELD  
 PLANNED CORPORATION • RAVEN CALIFORNIA  
 REGISTERED NUMBER 07348  
 REGISTERED OFFICE OF RECORDS IN THE FIELD  
 PLANNED CORPORATION • RAVEN CALIFORNIA  
 REGISTERED NUMBER 07348  
 REGISTERED OFFICE OF RECORDS IN THE FIELD



**BASEMENT PLAN**

3269.7 SF

I DO HEREBY CERTIFY THESE DRAWINGS SHOW GRAPHICALLY ALL PARTICULARS OF BUILDING 526 OF THE DECLARATION OF CONDOMINIUM FOR THE WOODS AT AUBURN LAKES, INCLUDING THE LAYOUT, LOCATION, DESIGNATION AND DIMENSIONS OF EACH FAMILY UNIT AND BUILDING AS CONSTRUCTED.

*Mark A. Smoley* 5-15-98

MARK A. SMOLEY - PROFESSIONAL ENG. #37447

EXHIBIT "A"

DECLARATION OF CONDOMINIUM FOR THE WOODS AT AUBURN LAKES

**BUILDING 526**

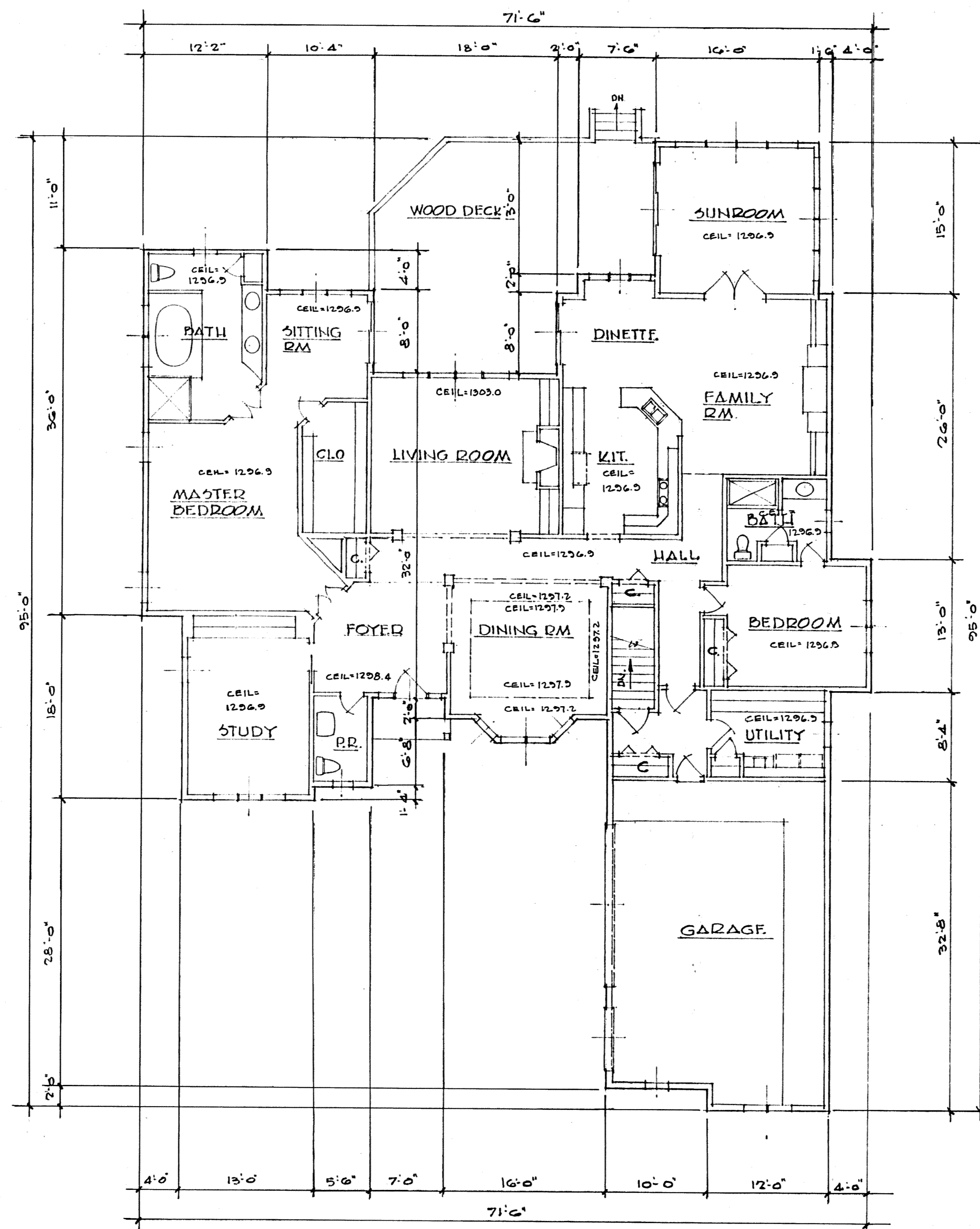
SCALE: 1/8"=1'-0" MAY, 1998 SHEET 3 OF 4

**BRAUN-PRENOSIL ASSOC., INC.**  
ENGINEERS-SURVEYORS CHAGRIN FALLS, OHIO

26-55

PLANNED CORPORATION • FRAME CALIFORNIA  
 REGISTERED PROFESSIONAL ARCHITECT  
 PROJECT NO. 98-0011  
 11/98

526



FIRST FLOOR PLAN

UNIT	BASEMENT		SQ. FT.	GARAGE		SQ. FT.	1st FLOOR		SQ. FT.	TOTAL SQ. FT.
	FLOOR	ELEV. CEILING		FLOOR	ELEV. CEILING		FLOOR	CEILING		
526	1278.1	SEE PLAN	3270	1289.6	1297.0	699	1286.9	SEE PLAN	3270	3270

I DO HEREBY CERTIFY THESE DRAWINGS SHOW GRAPHICALLY ALL PARTICULARS OF BUILDING 526 OF THE DECLARATION OF CONDOMINIUM FOR THE WOODS AT AUBURN LAKES, INCLUDING THE LAYOUT, LOCATION, DESIGNATION AND DIMENSIONS OF EACH FAMILY UNIT AND BUILDING AS CONSTRUCTED.

*Mark A. Smoley* 5.15.98  
 MARK A. SMOLEY - PROFESSIONAL ENG. #37447

EXHIBIT "A"

DECLARATION OF CONDOMINIUM FOR THE WOODS AT AUBURN LAKES		
BUILDING		526
SCALE: 1/8" = 1'-0"	MAY, 1998	SHEET 4 OF 4
BRAUN-PRENOSIL ASSOC., INC. ENGINEERS-SURVEYORS CHAGRIN FALLS, OHIO		

26-56

PLAN HOLD CORPORATION • IRVINE, CALIFORNIA  
 REGISTERED NUMBER 07344  
 PROFESSIONAL SEAL OF MARK A. SMOLEY