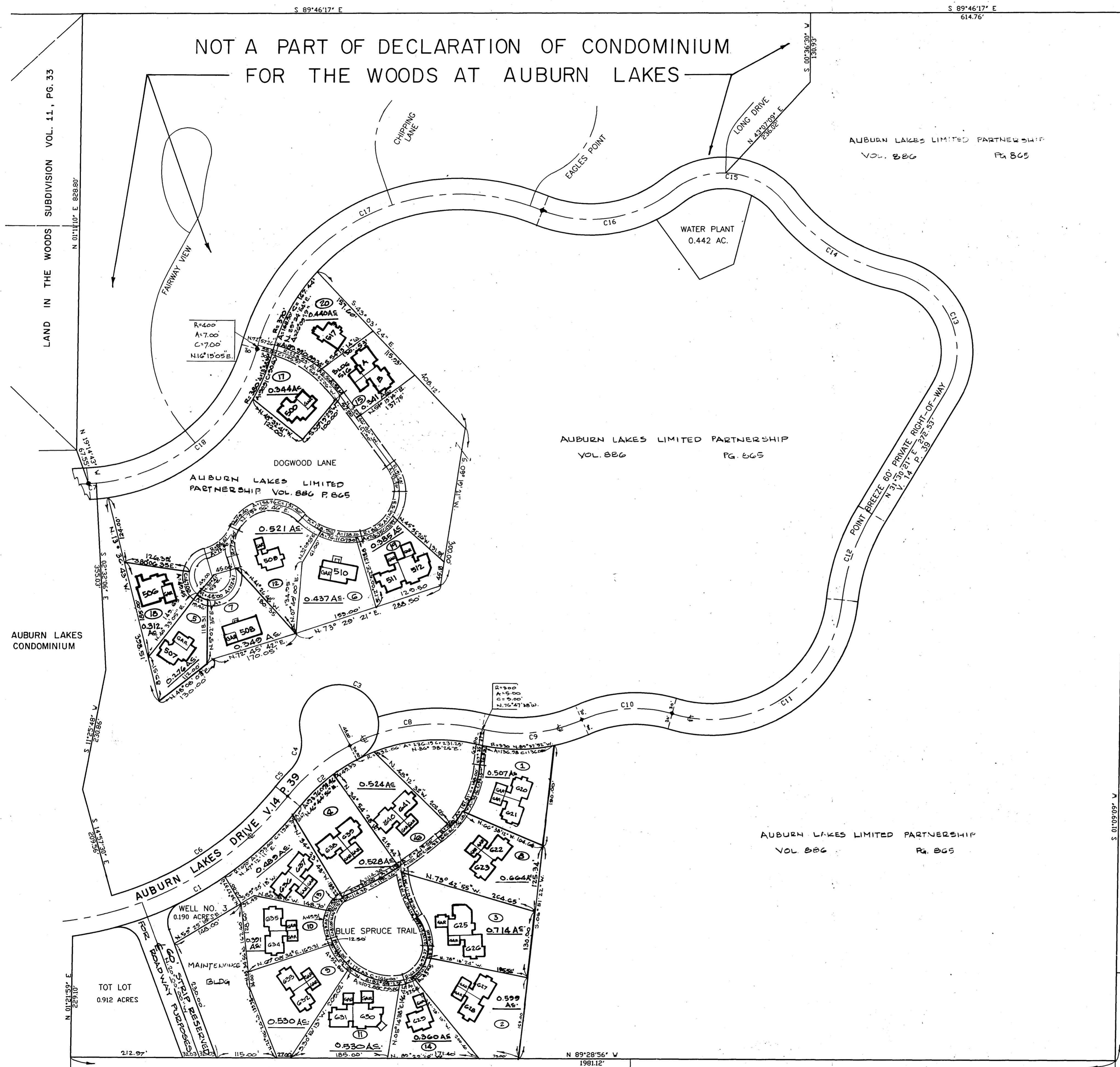


DECLARATION OF CONDOMINIUM FOR THE WOODS AT AUBURN LAKES

SITUATED IN THE TOWNSHIP OF AUBURN, COUNTY OF GAUGA AND STATE OF OHIO AND KNOWN AS BEING PART OF ORIGINAL AUBURN TOWNSHIP, SECTION ONE, TRACT TWO AND CONTAINING 83.986 ACRES OF LAND



AUBURN INDUSTRIAL PARK
PARTNERSHIP 1
VOL. 647 P. 663

LEGEND	AMENDMENT	DATE	BLDG. NO.	VOL. NO.
1	Original	FEB. 95	620	V. 23 P. 17
2	AMENDMENT #1	MAY, 95	621	V. 24 P. 22
3	AMENDMENT #2	JULY, 95	622	V. 24 P. 103
4	AMENDMENT #3	AUGUST, 95	623	V. 24 P. 113
5	AMENDMENT #4	SEPT, 95	507	V. 24 P. 113
6	AMENDMENT #5	SEPT, 95	510	V. 24 P. 113
7	AMENDMENT #6	NOV, 95	508	V. 24 P. 113
8	AMENDMENT #7	FEB, 96	624	V. 25 P. 55
9	AMENDMENT #8	APRIL, 96	625	V. 25 P. 55
10	AMENDMENT #9	APRIL, 96	626	V. 25 P. 55
11	AMENDMENT #10	MAY, 96	627	V. 25 P. 55
12	AMENDMENT #11	JULY, 96	628	V. 25 P. 55
13	AMENDMENT #12	JULY, 96	629	V. 25 P. 55
14	AMENDMENT #13	AUG, 96	630	V. 25 P. 55
15	AMENDMENT #14	OCT, 96	516	V. 25 P. 55
16	AMENDMENT #15	OCT, 96	517	V. 25 P. 55
17	AMENDMENT #16	OCT, 96	500	V. 25 P. 55
18	AMENDMENT #17	NOV, 96	506	V. 25 P. 55
19	AMENDMENT #18	JAN, 97	511	V. 25 P. 55
20	AMENDMENT #19	APRIL, 97	517	V. 25 P. 55

LEGEND	AMENDMENT	DATE	BLDG. NO.	VOL. NO.

504305
Received for Record this 10th day of April 1997 at 8:43 AM
& recorded in Gauga County
Plot Volume 25 pg. 17.
Katherine H. Heiden, Recorder

BOUNDARY CURVE TABLE

CURVE#	RADIUS	LENGTH	CHORD	CHORD BEARING	DELTA ANGLE	TANGENT
C1	670.00'	508.49'	496.37'	N 60°36'26" E	43°29'01"	267.19'
C2	340.69'	143.09'	142.04'	N 50°53'50" E	24°03'51"	72.62'
C3	75.00'	334.60'	118.51'	S 64°52'43" E	85°37'01"	96.66'
C4	75.00'	75.70'	75.93'	S 16°13'47" E	57°49'51"	41.43'
C5	400.69'	43.91'	43.89'	N 42°00'18" E	06°16'45"	21.98'
C6	610.37'	378.28'	372.28'	N 86°37'50" E	51°31'52"	195.45'
C7	350.00'	14.82'	14.82'	N 86°15'06" E	02°25'34"	7.41'

CENTERLINE CURVE TABLE

CURVE#	RADIUS	LENGTH	CHORD	CHORD BEARING	DELTA ANGLE	TANGENT
C8	362.06'	257.53'	252.14'	N 83°18'23" E	40°45'16"	134.49'
C9	300.00'	195.10'	191.68'	N 85°03'11" E	37°15'41"	101.14'
C10	250.00'	176.44'	172.80'	N 86°38'25" E	40°26'10"	92.07'
C11	250.00'	438.51'	384.42'	N 56°36'30" E	100°30'00"	300.59'
C12	400.00'	175.56'	174.16'	N 18°55'56" E	25°08'51"	89.22'
C13	150.00'	285.14'	244.10'	S 22°57'04" E	108°54'51"	209.96'
C14	350.00'	249.39'	244.14'	S 36°59'45" E	40°49'30"	130.25'
C15	150.00'	241.12'	215.99'	S 32°38'00" E	92°06'00"	155.60'
C16	250.00'	267.48'	254.91'	N 81°58'05" E	61°18'10"	148.15'
C17	400.00'	676.28'	598.56'	N 64°11'05" E	36°52'10"	451.08'
C18	350.00'	423.32'	397.98'	S 50°23'58" E	69°17'53"	241.89'

THE QUEENS
DEVELOPMENT CO.
VOL. 1005 P. 1142

R.L. & J.F. SIMPSON
VOL. 911 PG. 698

J. & P. WEINGART
V. 800 P. 919

J. FEHER ET AL.
V. 863 P. 125

DECLARATION OF CONDOMINIUM FOR
THE WOODS AT AUBURN LAKES

MASTER SITE PLAN

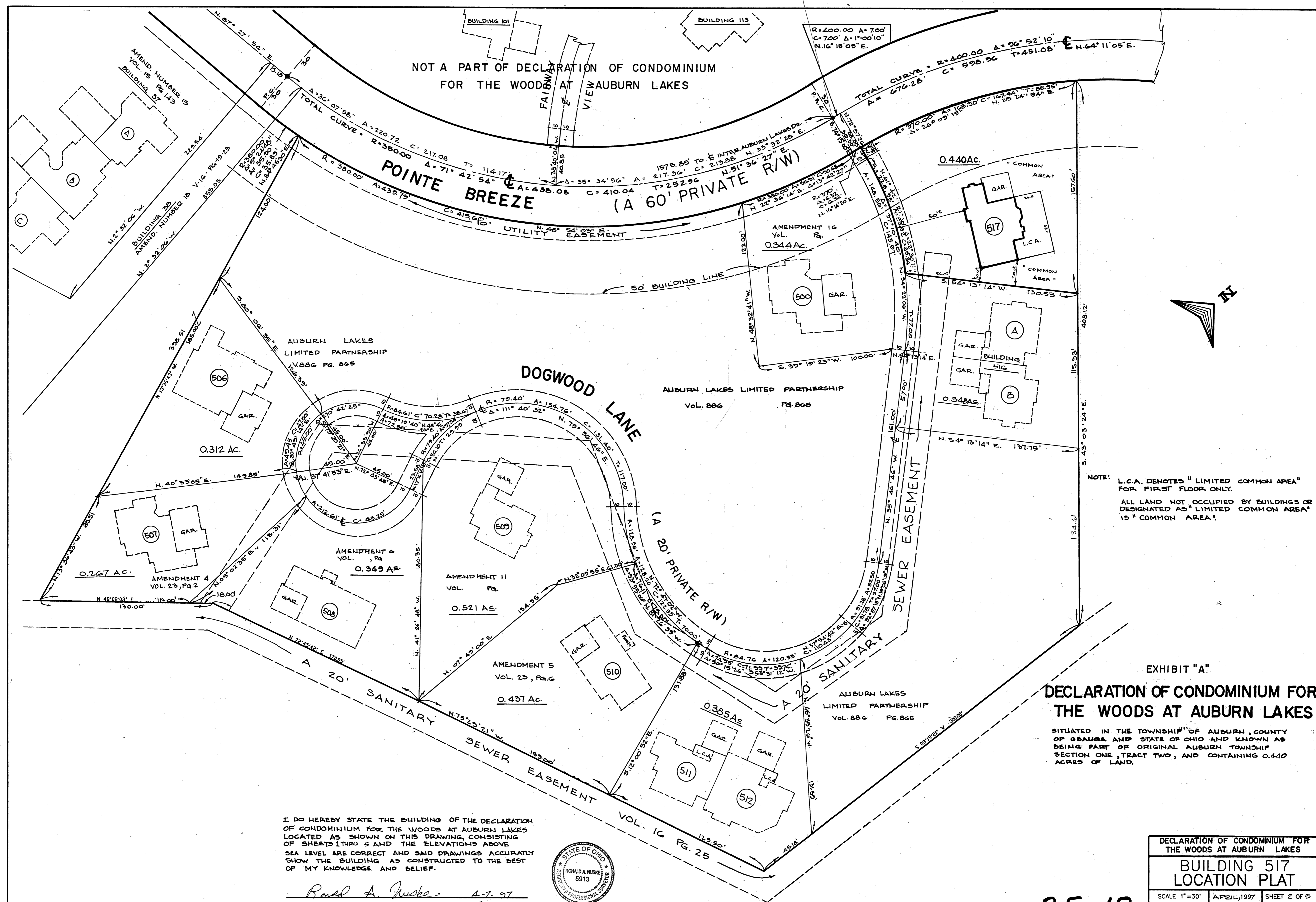
SCALE: 1"=100' FEB. 1995 SHEET 1 OF 5

BRAUN-PRENOSIL ASSOC., INC.
ENGINEERS-SURVEYORS CHAGRIN FALLS, OHIO

AMENDMENT NO. 19

25-17

NOT A PART OF DECLARATION OF CONDOMINIUM
FOR THE WOODS AT AUBURN LAKES



NOTE: L.C.A. DENOTES "LIMITED COMMON AREA"
FOR FIRST FLOOR ONLY.
ALL LAND NOT OCCUPIED BY BUILDINGS OR
DESIGNATED AS "LIMITED COMMON AREA"
IS "COMMON AREA".

EXHIBIT "A"
**DECLARATION OF CONDOMINIUM FOR
THE WOODS AT AUBURN LAKES**

SITUATED IN THE TOWNSHIP OF AUBURN, COUNTY
OF GEauga AND STATE OF OHIO AND KNOWN AS
BEING PART OF ORIGINAL AUBURN TOWNSHIP
SECTION ONE, TRACT TWO, AND CONTAINING 0.440
ACRES OF LAND.

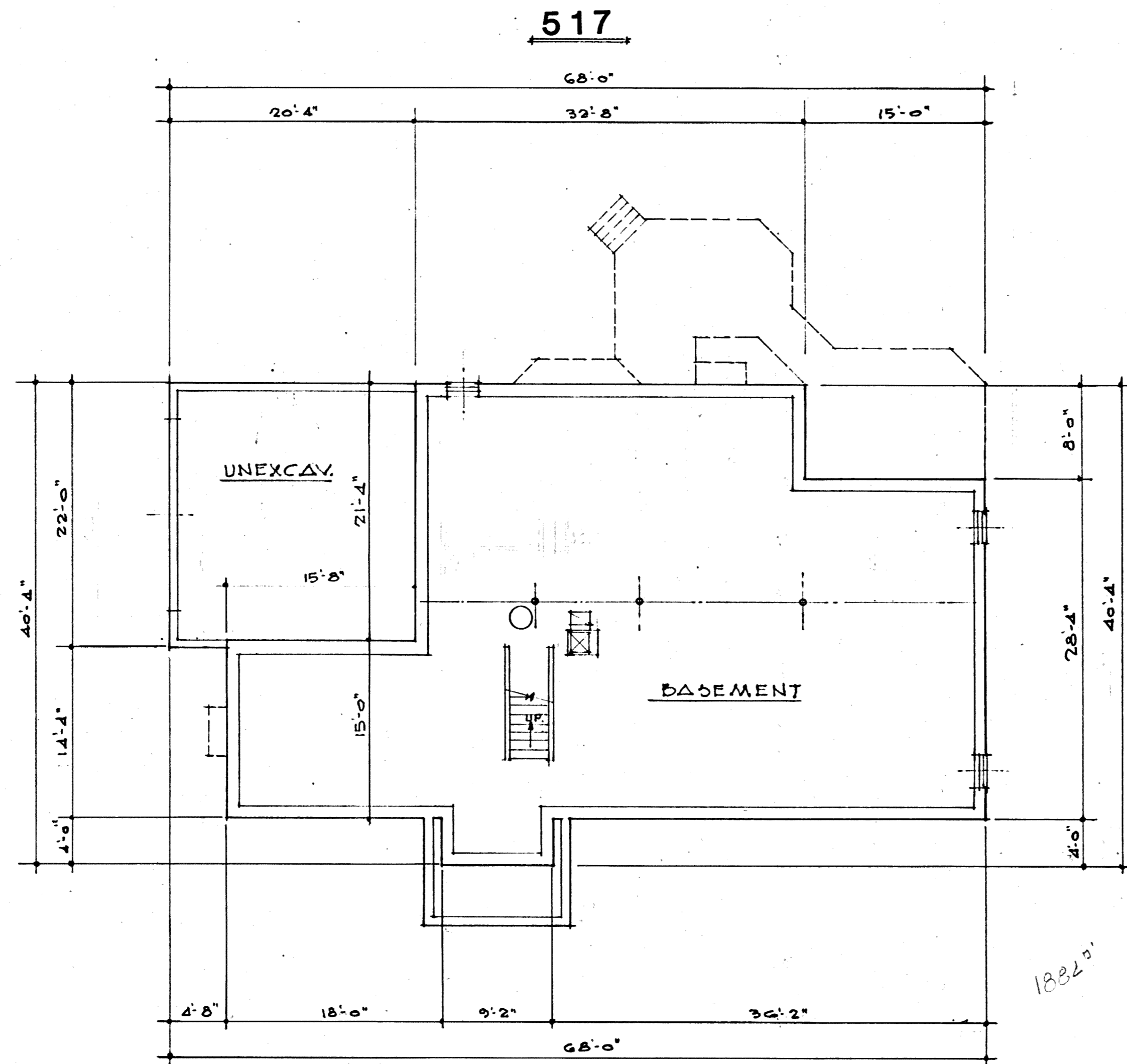
I DO HEREBY STATE THE BUILDING OF THE DECLARATION
OF CONDOMINIUM FOR THE WOODS AT AUBURN LAKES
LOCATED AS SHOWN ON THIS DRAWING, CONSISTING
OF SHEETS 1 THRU 5 AND THE ELEVATIONS ABOVE
SEA LEVEL ARE CORRECT AND SAID DRAWINGS ACCURATELY
SHOW THE BUILDING AS CONSTRUCTED TO THE BEST
OF MY KNOWLEDGE AND BELIEF.

Ronald A. Nuske 4-7-97
RONALD A. NUSKE REG. SURVEYOR # 5913



DECLARATION OF CONDOMINIUM FOR THE WOODS AT AUBURN LAKES		
BUILDING 517 LOCATION PLAT		
SCALE 1"=30'	APRIL, 1997	SHEET 2 OF 5
BRAUN-PRENOSIL ASSOC., INC. ENGINEERS-SURVEYORS CHAGRIN FALLS, OHIO		

25-18



° BASEMENT PLAN °

I DO HEREBY CERTIFY THESE DRAWINGS SHOW GRAPHICALLY ALL PARTICULARS OF BUILDING 517 OF THE DECLARATION OF CONDOMINIUM FOR THE WOODS AT AUBURN LAKES, INCLUDING THE LAYOUT, LOCATION, DESIGNATION AND DIMENSIONS OF EACH FAMILY UNIT AND BUILDING AS CONSTRUCTED.

Damon A. Braun 4-7-97
 DAMON A. BRAUN-PROFESSIONAL ENG. #27049

EXHIBIT "A"

DECLARATION OF CONDOMINIUM FOR THE WOODS AT AUBURN LAKES

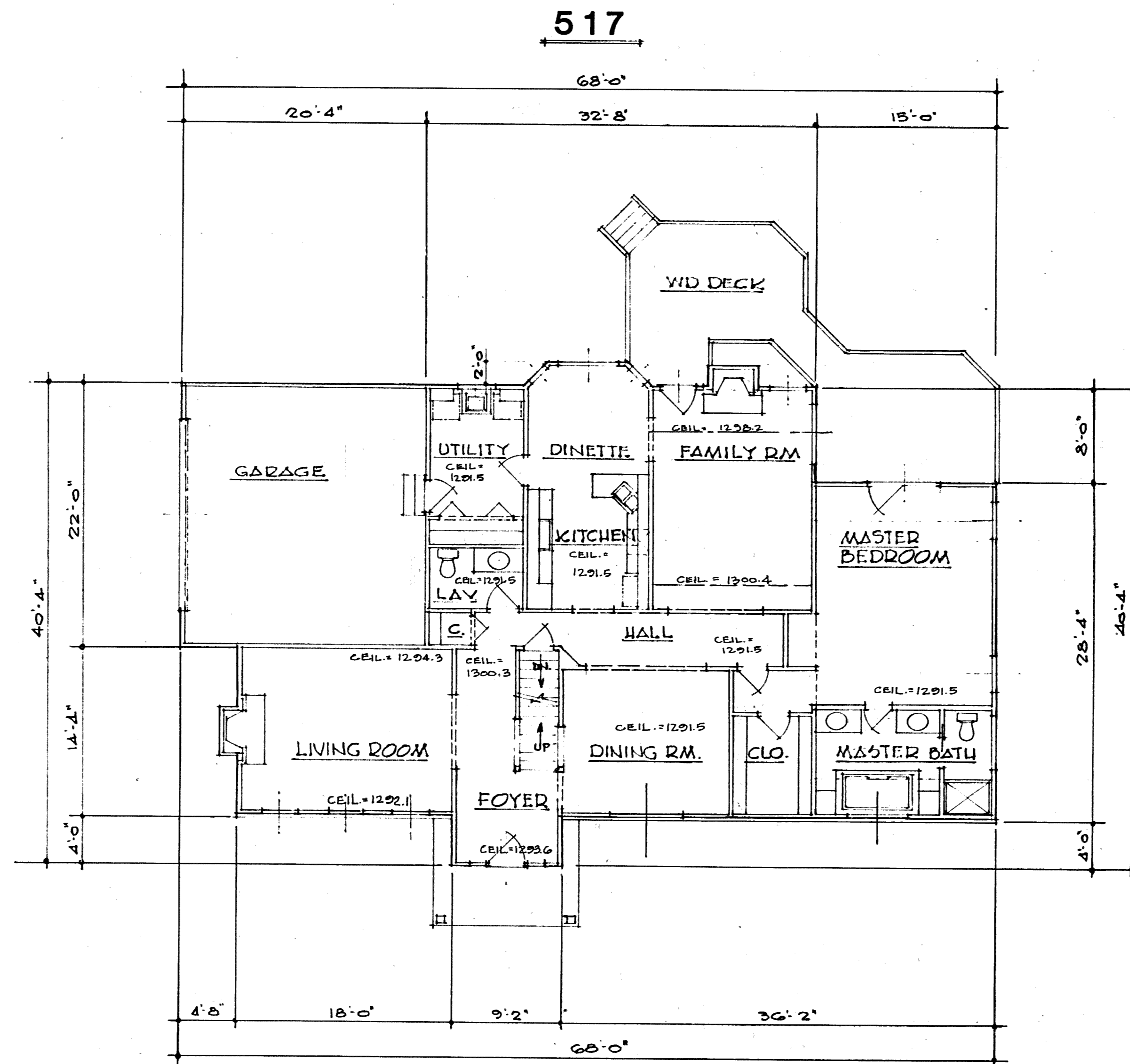
BUILDING 517

SCALE: 1/8" = 1'-0" APRIL, 1997 SHEET 3 OF 5

BRAUN-PRENOSIL ASSOC., INC.
 ENGINEERS-SURVEYORS CHAGRIN FALLS, OHIO

25-19

PLAN HOLD CORPORATION • IRVINE, CALIFORNIA
 REGISTERED PROFESSIONAL ARCHITECT
 REGIONAL OFFICE OF IRVINE, CALIFORNIA



• FIRST FLOOR PLAN •

I DO HEREBY CERTIFY THESE DRAWINGS SHOW GRAPHICALLY ALL PARTICULARS OF BUILDING 517 OF THE DECLARATION OF CONDOMINIUM FOR THE WOODS AT AUBURN LAKES, INCLUDING THE LAYOUT, LOCATION, DESIGNATION AND DIMENSIONS OF EACH FAMILY UNIT AND BUILDING AS CONSTRUCTED.

Damon A. Braun 4-7-97
 DAMON A. BRAUN-PROFESSIONAL ENG. #27049

UNIT	BASEMENT ELEV.		SQ. FT.	GARAGE ELEV.		SQ. FT.	1st FLOOR ELEV.		SQ. FT.	2nd FLOOR ELEV.		SQ. FT.	TOTAL SQ. FT.
	FLOOR	CEILING		FLOOR	CEILING		FLOOR	CEILING		FLOOR	CEILING		
517	1274.7	1282.5	1884	1281.5	1292.4	420	1283.5	SEE PLAN	1876	1292.4	SEE PLAN	790	2666

EXHIBIT "A"

DECLARATION OF CONDOMINIUM FOR THE WOODS AT AUBURN LAKES

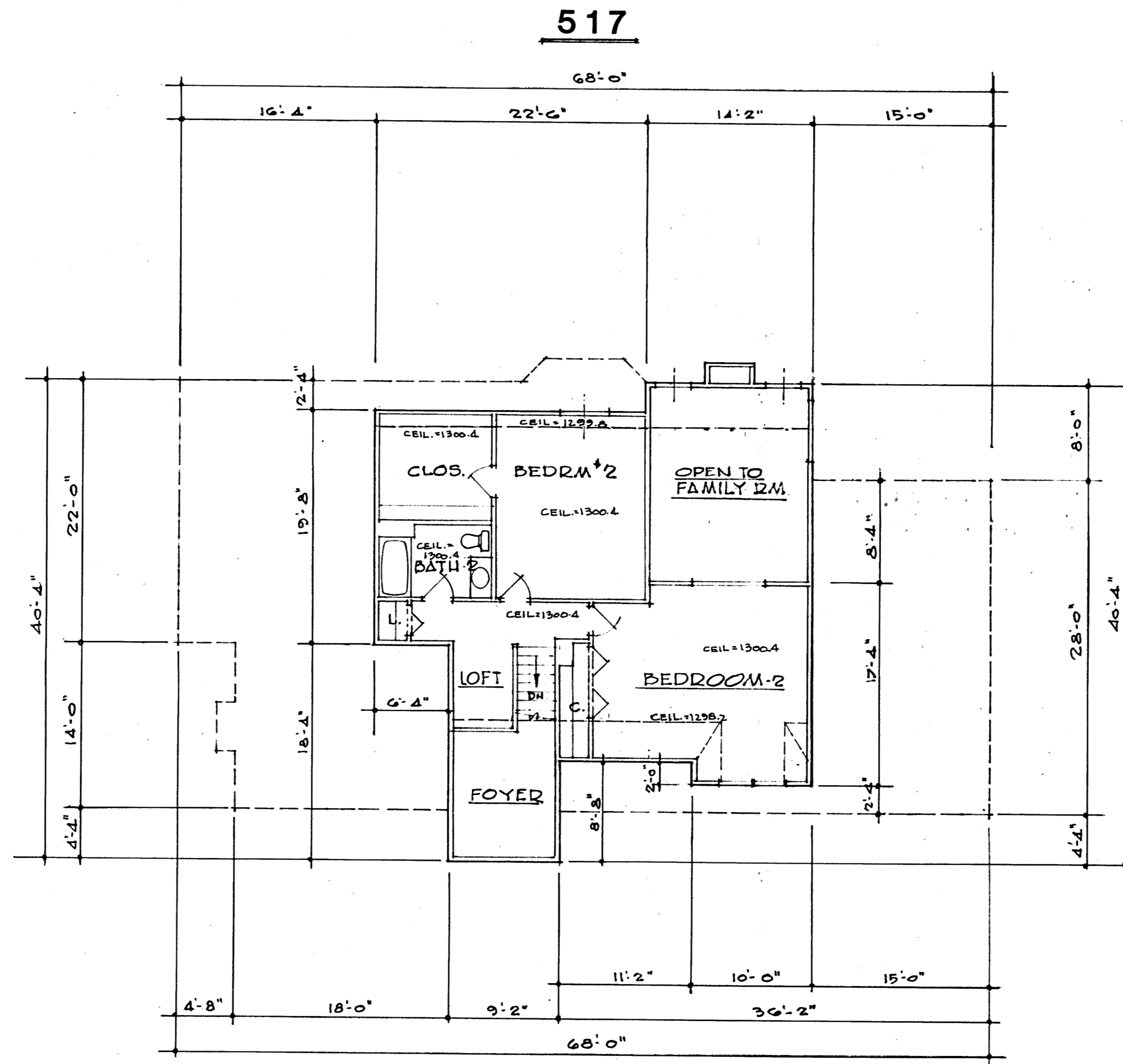
BUILDING 517

SCALE: 1/8" = 1'-0" APRIL, 1997 SHEET 4 OF 5

BRAUN-PRENOSIL ASSOC., INC.
 ENGINEERS-SURVEYORS CHAGRIN FALLS, OHIO

25-20

RAHWILD CORPORATION • RANIC CALIFORNIA ARCHITECTURAL ASSOCIATION
 RAHWILD CORPORATION • RANIC CALIFORNIA ARCHITECTURAL ASSOCIATION
 RAHWILD CORPORATION • RANIC CALIFORNIA ARCHITECTURAL ASSOCIATION
 RAHWILD CORPORATION • RANIC CALIFORNIA ARCHITECTURAL ASSOCIATION



• SECOND FLOOR PLAN •
 1/8" = 1'-0" 790.15.F

I DO HEREBY CERTIFY THESE DRAWINGS SHOW GRAPHICALLY ALL PARTICULARS OF BUILDING 517 OF THE DECLARATION OF CONDOMINIUM FOR THE WOODS AT AUBURN LAKES, INCLUDING THE LAYOUT, LOCATION, DESIGNATION AND DIMENSIONS OF EACH FAMILY UNIT AND BUILDING AS CONSTRUCTED.

Damon A. Braun 4-7-97
 DAMON A. BRAUN-PROFESSIONAL ENG. #27049

EXHIBIT "A"

DECLARATION OF CONDOMINIUM FOR THE WOODS AT AUBURN LAKES

BUILDING 517

SCALE 1/8" = 1'-0" APRIL, 1997 SHEET 5 OF 5

BRAUN-PRENOSIL ASSOC., INC.
 ENGINEERS-SURVEYORS CHAGRIN FALLS, OHIO

25-21

PLAN HOLD CORPORATION • IRVINE, CALIFORNIA
 REGISTERED PROFESSIONAL ARCHITECT
 REGISTERED PROFESSIONAL ARCHITECT
 REGISTERED PROFESSIONAL ARCHITECT
 REGISTERED PROFESSIONAL ARCHITECT