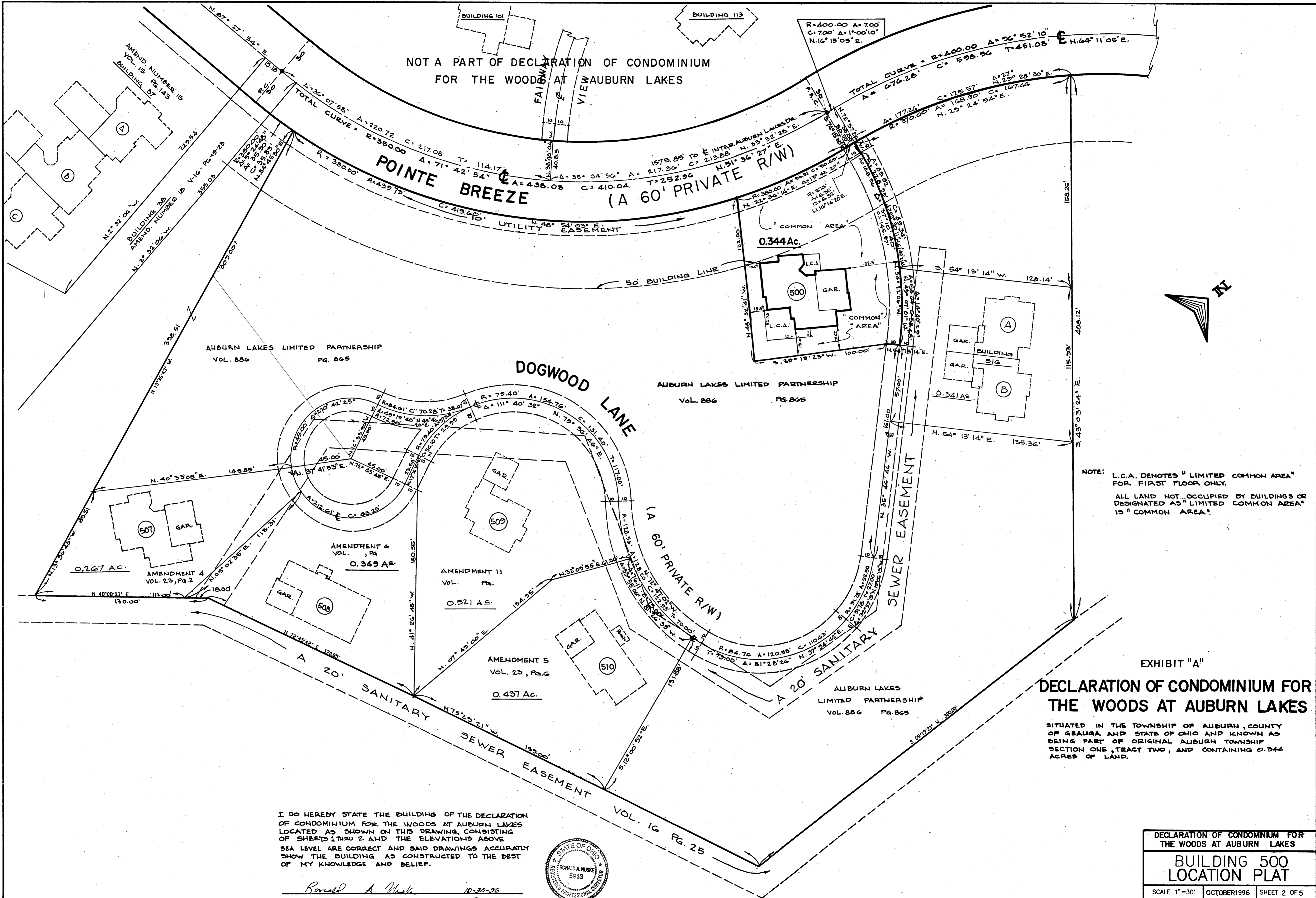


NOT A PART OF DECLARATION OF CONDOMINIUM FOR THE WOODS AT AUBURN LAKES



NOTE: L.C.A. DENOTES "LIMITED COMMON AREA" FOR FIRST FLOOR ONLY.
ALL LAND NOT OCCUPIED BY BUILDINGS OR DESIGNATED AS "LIMITED COMMON AREA" IS "COMMON AREA".

EXHIBIT "A"
DECLARATION OF CONDOMINIUM FOR THE WOODS AT AUBURN LAKES

SITUATED IN THE TOWNSHIP OF AUBURN, COUNTY OF GEauga AND STATE OF OHIO AND KNOWN AS BEING PART OF ORIGINAL AUBURN TOWNSHIP SECTION ONE, TRACT TWO, AND CONTAINING 0.344 ACRES OF LAND.

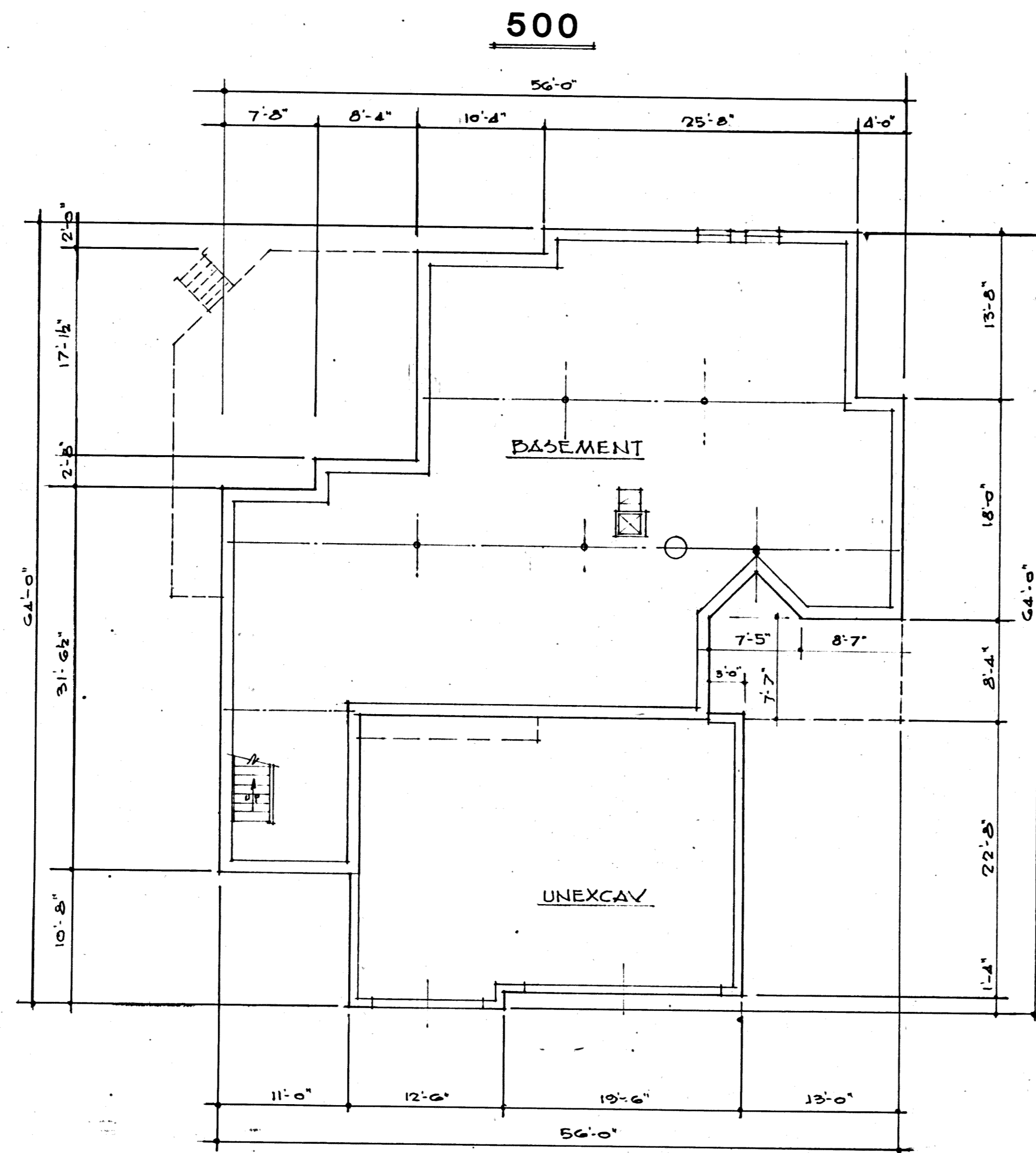
I DO HEREBY STATE THE BUILDING OF THE DECLARATION OF CONDOMINIUM FOR THE WOODS AT AUBURN LAKES LOCATED AS SHOWN ON THIS DRAWING, CONSISTING OF SHEETS 1 THRU 2 AND THE ELEVATIONS ABOVE SEA LEVEL ARE CORRECT AND SAID DRAWINGS ACCURATELY SHOW THE BUILDING AS CONSTRUCTED TO THE BEST OF MY KNOWLEDGE AND BELIEF.

Ronald A. Nuske 10-30-96
RONALD A. NUSKE REG. SURVEYOR # 5915



DECLARATION OF CONDOMINIUM FOR THE WOODS AT AUBURN LAKES		
BUILDING 500 LOCATION PLAT		
SCALE 1"=30'	OCTOBER 1996	SHEET 2 OF 5
BRAUN-PRENOSIL ASSOC., INC. ENGINEERS-SURVEYORS CHAGRIN FALLS, OHIO		

24-59



• BASEMENT PLAN •

I DO HEREBY CERTIFY THESE DRAWINGS SHOW GRAPHICALLY ALL PARTICULARS OF BUILDING 500 OF THE DECLARATION OF CONDOMINIUM FOR THE WOODS AT AUBURN LAKES, INCLUDING THE LAYOUT, LOCATION, DESIGNATION AND DIMENSIONS OF EACH FAMILY UNIT AND BUILDING AS CONSTRUCTED.

Damon A. Braun 10-24-96
 DAMON A. BRAUN-PROFESSIONAL ENG. # 27049

EXHIBIT "A"

DECLARATION OF CONDOMINIUM FOR THE WOODS AT AUBURN LAKES

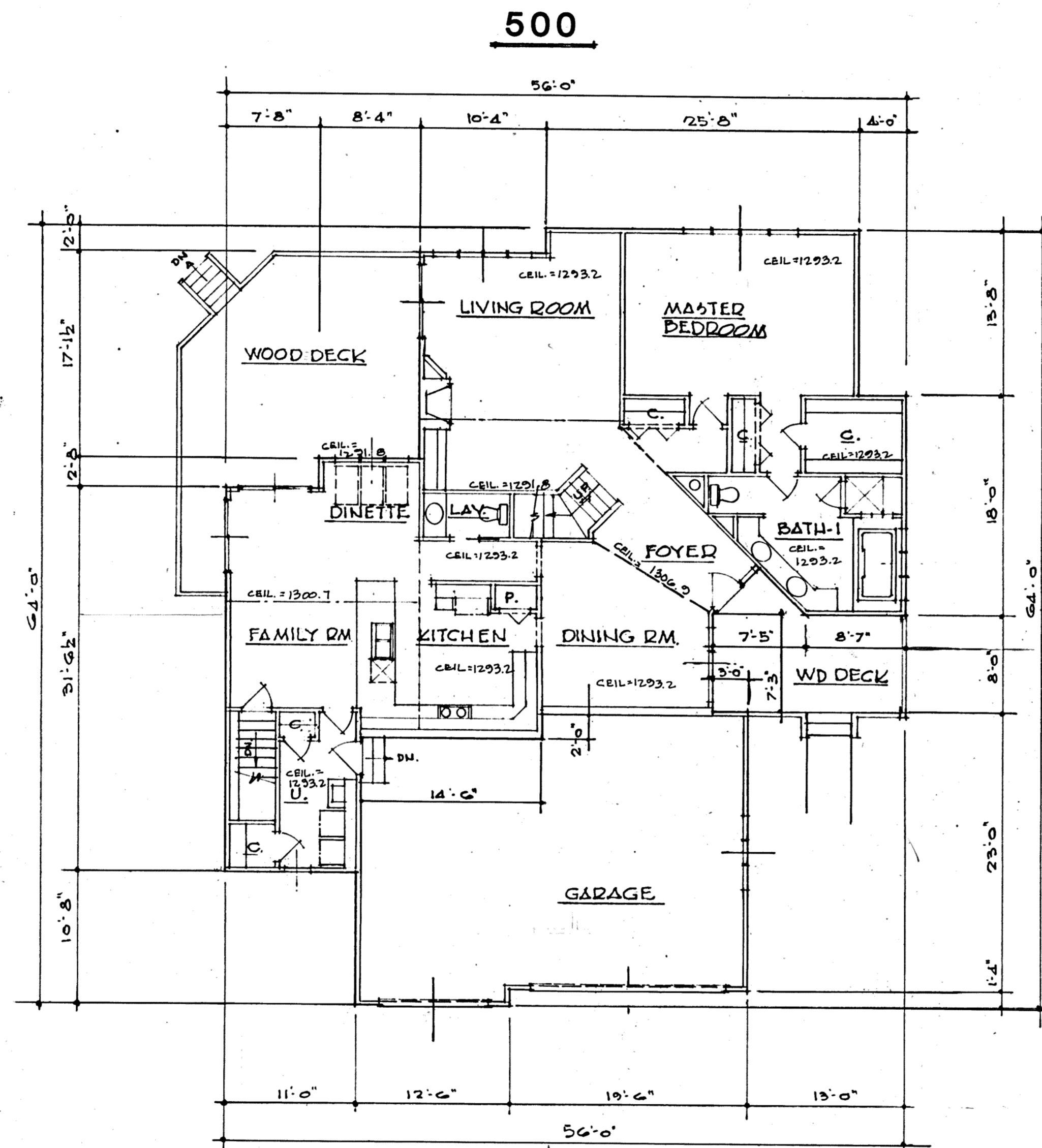
BUILDING 500

SCALE: 1/8" = 1'-0" OCT. , 1996 SHEET 3 OF 5

BRAUN-PRENOSIL ASSOC., INC.
 ENGINEERS-SURVEYORS CHAGRIN FALLS, OHIO

24-60

PLAN HOLD CORPORATION • RINAC CALIFORNIA
 REGISTERED PROFESSIONAL ARCHITECT
 10000 WOODLAND AVENUE, SUITE 100, WOODLAND, CA 95694
 (916) 861-1111



• FIRST FLOOR PLAN •

I DO HEREBY CERTIFY THESE DRAWINGS SHOW GRAPHICALLY ALL PARTICULARS OF BUILDING 500 OF THE DECLARATION OF CONDOMINIUM FOR THE WOODS AT AUBURN LAKES, INCLUDING THE LAYOUT, LOCATION, DESIGNATION AND DIMENSIONS OF EACH FAMILY UNIT AND BUILDING AS CONSTRUCTED.

Damon A. Braun 10-24-96
 DAMON A. BRAUN-PROFESSIONAL ENG. #27049

UNIT	BASEMENT ELEV.		SQ. FT.	GARAGE ELEV.		SQ. FT.	1st FLOOR ELEV.		SQ. FT.	2nd. FLOOR ELEV.		SQ. FT.	TOTAL SQ. FT.
	FLOOR	CEILING		FLOOR	CEILING		FLOOR	CEILING		FLOOR	CEILING		
500	1276.4	1284.3	1838	1283.2	1293.0	685	1288.2	SEE PLAN	1863	1294.3	SEE PLAN	830	2693

EXHIBIT "A"

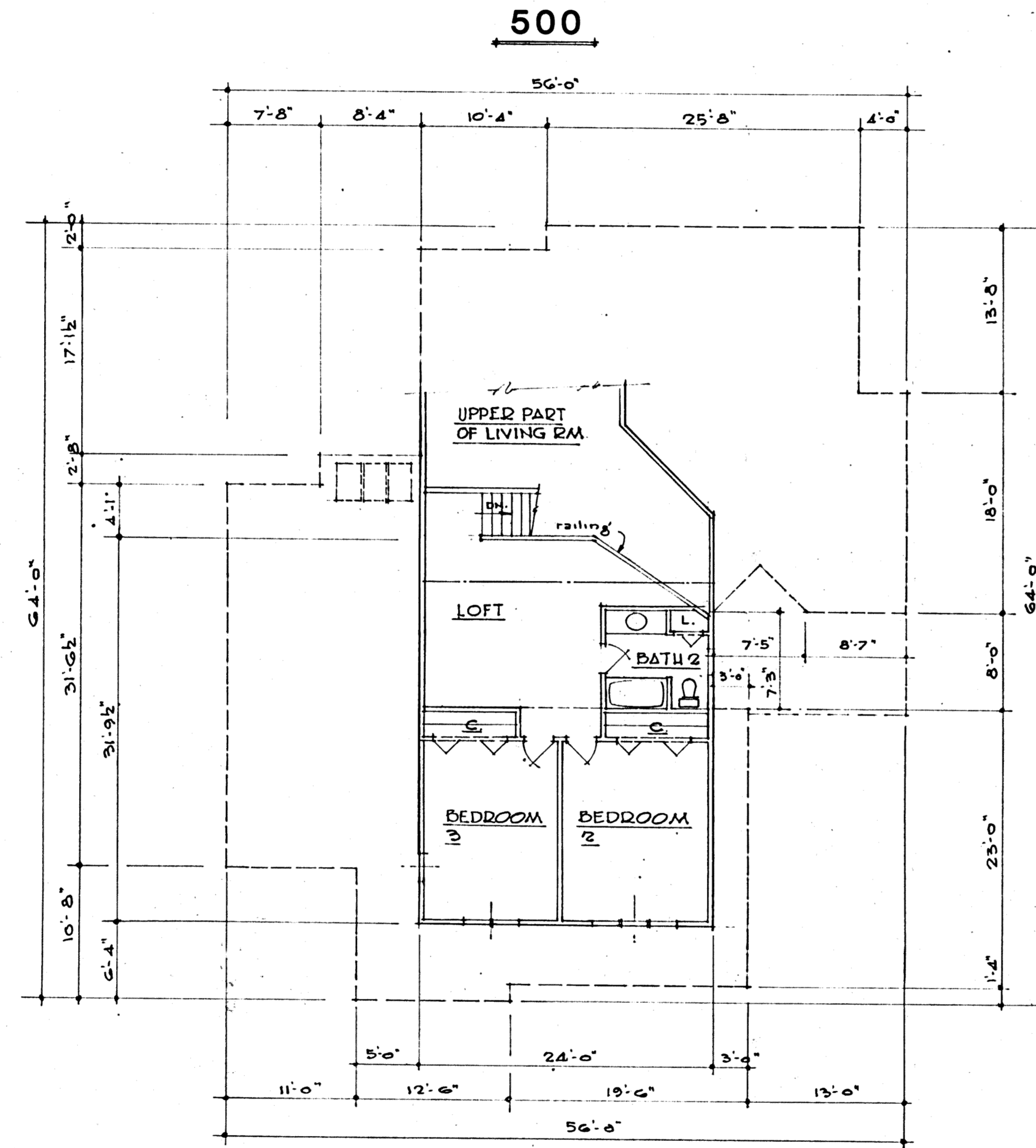
DECLARATION OF CONDOMINIUM FOR THE WOODS AT AUBURN LAKES

BUILDING 500

SCALE: 1/8"=1'-0" OCT. , 1996 SHEET 4 OF 5

BRAUN-PRENOSIL ASSOC., INC.
 ENGINEERS-SURVEYORS CHAGRIN FALLS, OHIO

24-61



• SECOND FLOOR PLAN •

I DO HEREBY CERTIFY THESE DRAWINGS SHOW GRAPHICALLY ALL PARTICULARS OF BUILDING 500 OF THE DECLARATION OF CONDOMINIUM FOR THE WOODS AT AUBURN LAKES, INCLUDING THE LAYOUT, LOCATION, DESIGNATION AND DIMENSIONS OF EACH FAMILY UNIT AND BUILDING AS CONSTRUCTED.

Damon A. Braun 10-24-96
 DAMON A. BRAUN-PROFESSIONAL ENG. #27049

EXHIBIT "A"

DECLARATION OF CONDOMINIUM FOR THE WOODS AT AUBURN LAKES

BUILDING 500

SCALE: 1/8"=1'-0" OCT. , 1996 SHEET 5 OF 5

BRAUN-PRENOSIL ASSOC., INC.
 ENGINEERS-SURVEYORS CHAGRIN FALLS, OHIO

24-62

PLAN/HOLD CORPORATION • FRANK, CALIFORNIA
 REGISTERED NUMBER 07524
 PROFESSIONAL SEAL OF FRANK ON THIS LINE