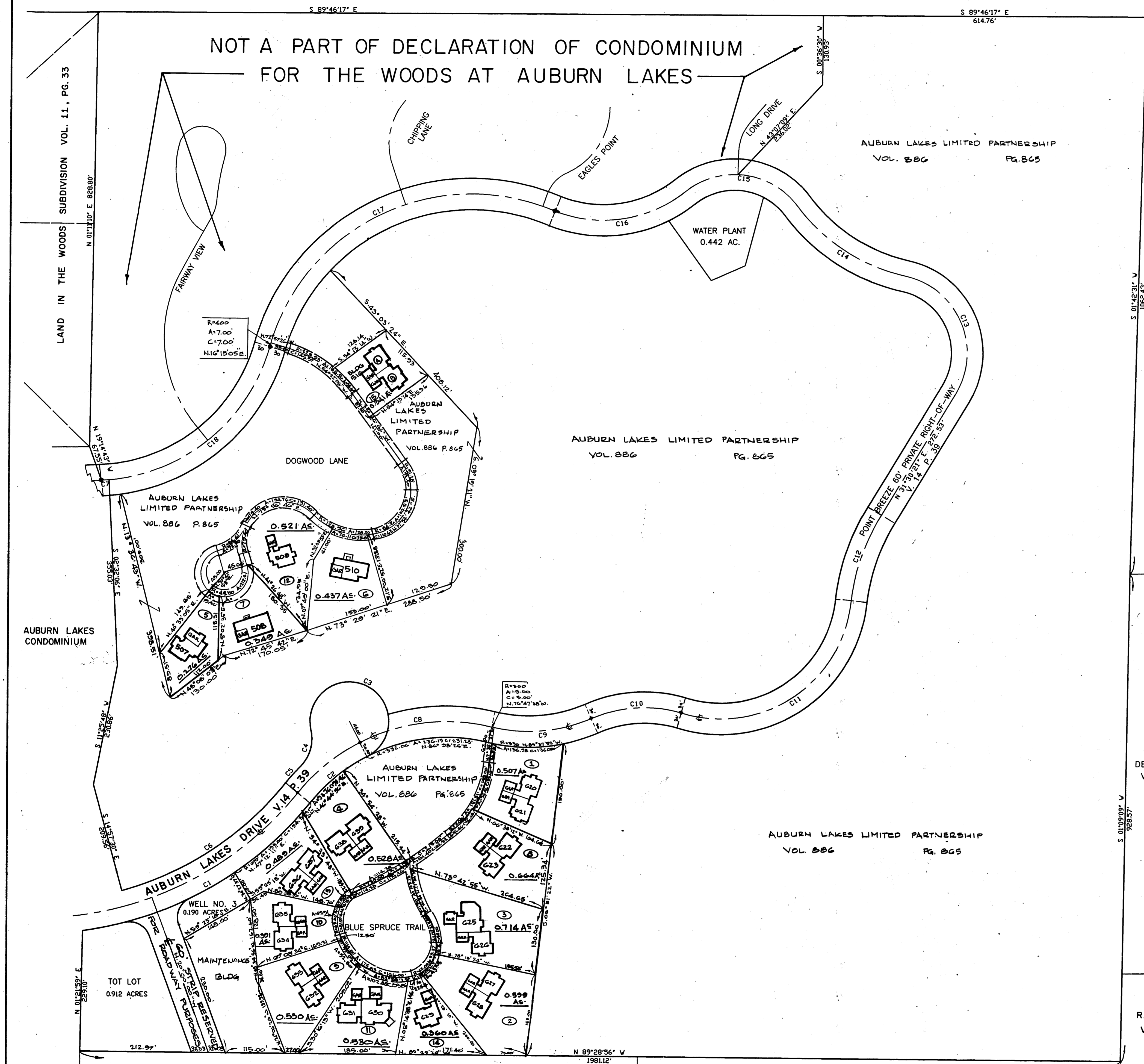
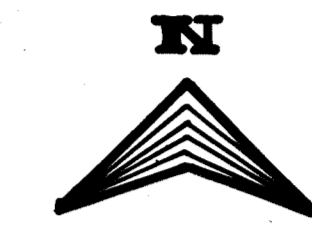


DECLARATION OF CONDOMINIUM FOR THE WOODS AT AUBURN LAKES

SITUATED IN THE TOWNSHIP OF AUBURN, COUNTY OF GEauga AND STATE OF OHIO AND KNOWN AS BEING PART OF ORIGINAL AUBURN TOWNSHIP, SECTION ONE, TRACT TWO AND CONTAINING 83.926 ACRES OF LAND.



LEGEND	AMENDMENT	DATE	BLDG. NO.	VOL. NO.
①	Original	FEB., 95	220	V. 22 P. 77
②	AMENDMENT #1	MAY, 95	221	V. 22 P. 78
③	AMENDMENT #2	JULY, 95	222	V. 22 P. 79
④	AMENDMENT #3	AUGUST, 95	223	V. 22 P. 80
⑤	AMENDMENT #4	SEPT., 95	507	V. 22 P. 81
⑥	AMENDMENT #5	SEPT., 95	510	V. 22 P. 82
⑦	AMENDMENT #6	NOV., 95	508	V. 22 P. 83
⑧	AMENDMENT #7	FEB., 96	224	V. 22 P. 84
⑨	AMENDMENT #8	APRIL, 96	225	V. 22 P. 85
⑩	AMENDMENT #9	APRIL, 96	226	V. 22 P. 86
⑪	AMENDMENT #10	MAY, 96	227	V. 22 P. 87
⑫	AMENDMENT #11	JULY, 96	509	V. 22 P. 88
⑬	AMENDMENT #12	JULY, 96	228	V. 22 P. 89
⑭	AMENDMENT #13	AUG., 96	229	V. 22 P. 90
⑮	AMENDMENT #14	OCT., 96	516	V. 22 P. 91

LEGEND	AMENDMENT	DATE	BLDG. NO.	VOL. NO.

494100
Received for record this 4th day of October, 1996 at 2:25 P.M. and recorded in Geauga County Plat Volume 24 Page 44.
Catherine H. Heider, Recorder

BOUNDARY CURVE TABLE

CURVE#	RADIUS	LENGTH	CHORD	CHORD BEARING	DELTA ANGLE	TANGENT
C1	670.00'	508.49'	496.37'	N 60°36'26"E	43°29'01"	267.19'
C2	340.65'	143.09'	142.04'	N 50°52'50"E	24°02'51"	72.62'
C3	75.00'	334.60'	116.51'	S 84°52'49"E	255°37'01"	36.66'
C4	75.00'	75.70'	72.53'	S 16°13'47"E	57°49'51"	41.43'
C5	400.00'	43.91'	43.89'	N 42°38'25"E	40°25'10"	32.07'
C6	610.00'	378.28'	372.25'	N 56°37'50"E	35°31'32"	195.45'
C7	350.00'	14.82'	14.82'	N 86°15'06"E	02°25'34"	7.41'

CENTERLINE CURVE TABLE

CURVE#	RADIUS	LENGTH	CHORD	CHORD BEARING	DELTA ANGLE	TANGENT
C8	362.06'	257.53'	252.14'	N 83°18'23"E	40°45'16"	134.49'
C9	300.00'	195.10'	191.68'	N 85°03'11"E	37°15'41"	101.14'
C10	250.00'	176.44'	172.80'	N 86°38'25"E	40°25'10"	92.07'
C11	250.00'	438.51'	384.42'	N 56°36'30"E	100°30'00"	300.59'
C12	400.00'	175.56'	174.16'	N 18°55'56"E	25°08'51"	89.22'
C13	150.00'	288.14'	144.10'	S 22°57'04"E	108°54'51"	209.36'
C14	350.00'	249.39'	244.14'	S 56°59'45"E	40°49'30"	130.25'
C15	150.00'	211.12'	215.90'	S 82°38'00"E	92°06'00"	155.60'
C16	200.00'	267.48'	254.91'	N 81°58'00"E	61°19'10"	148.15'
C17	400.00'	676.28'	598.56'	N 64°11'05"E	96°52'10"	431.08'
C18	350.00'	423.32'	397.98'	S 50°23'58"E	69°17'53"	241.89'

THE QUEENS DEVELOPMENT CO.
VOL. 1005 P. 1142

R.L. & J.F. SIMPSON
VOL. 911 PG. 698

J. & P. WEINGART
V. 800 P. 919

J. FEHER ET AL.
V. 863 P. 125

DECLARATION OF CONDOMINIUM FOR
THE WOODS AT AUBURN LAKES

MASTER SITE PLAN

SCALE: 1"=100' FEB., 1995 SHEET 1 OF 5

24-44
BRAUN- PRENOSIL ASSOC., INC.
ENGINEERS-SURVEYORS CHAGRIN FALLS, OHIO

AMENDMENT NO. 14

NOT A PART OF DECLARATION OF CONDOMINIUM
FOR THE WOODS AT AUBURN LAKES

POINTE BREEZE
(A 60' PRIVATE R/W)

DOGWOOD LANE
(A 60' PRIVATE R/W)

SEWER EASEMENT

AUBURN LAKES LIMITED PARTNERSHIP
VOL. 886 PG. 865

AUBURN LAKES LIMITED PARTNERSHIP
VOL. 886 PG. 865

AUBURN LAKES LIMITED PARTNERSHIP
VOL. 886 PG. 865

EXHIBIT "A"
DECLARATION OF CONDOMINIUM FOR
THE WOODS AT AUBURN LAKES

SITUATED IN THE TOWNSHIP OF AUBURN, COUNTY OF GAUGA AND STATE OF OHIO AND KNOWN AS BEING PART OF ORIGINAL AUBURN TOWNSHIP SECTION ONE, TRACT TWO, AND CONTAINING 0.341 ACRES OF LAND.

I DO HEREBY STATE THE BUILDING OF THE DECLARATION OF CONDOMINIUM FOR THE WOODS AT AUBURN LAKES LOCATED AS SHOWN ON THIS DRAWING, CONSISTING OF SHEETS 1 THRU AND THE ELEVATIONS ABOVE SEA LEVEL ARE CORRECT AND SAID DRAWINGS ACCURATELY SHOW THE BUILDING AS CONSTRUCTED TO THE BEST OF MY KNOWLEDGE AND BELIEF.

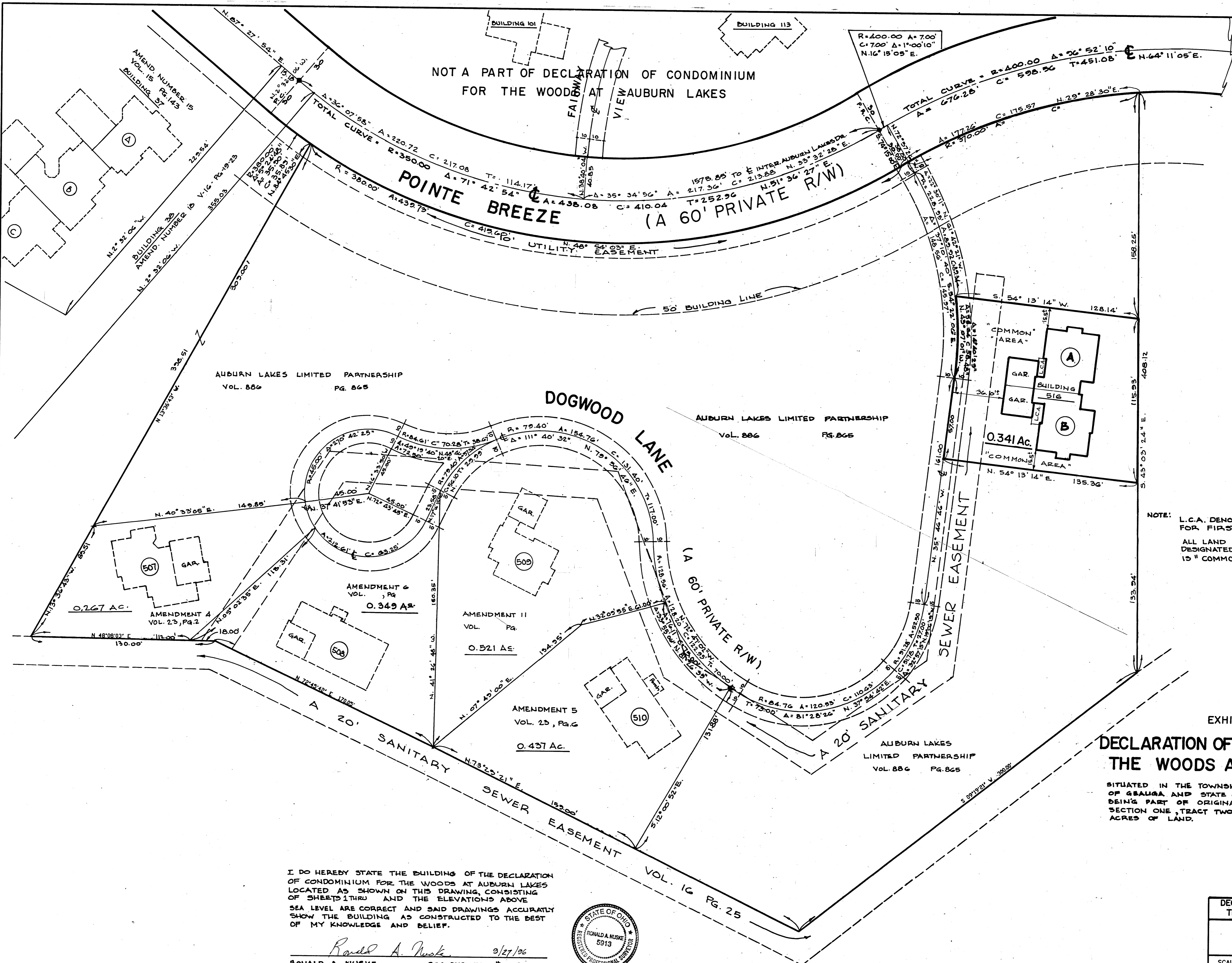
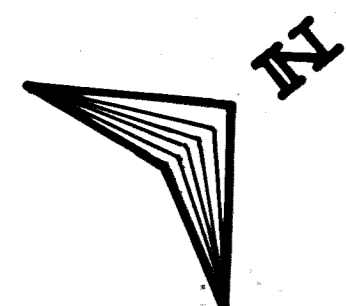
Ronald A. Nuske 9/27/96
RONALD A. NUSKE REG. SURVEYOR # 5913



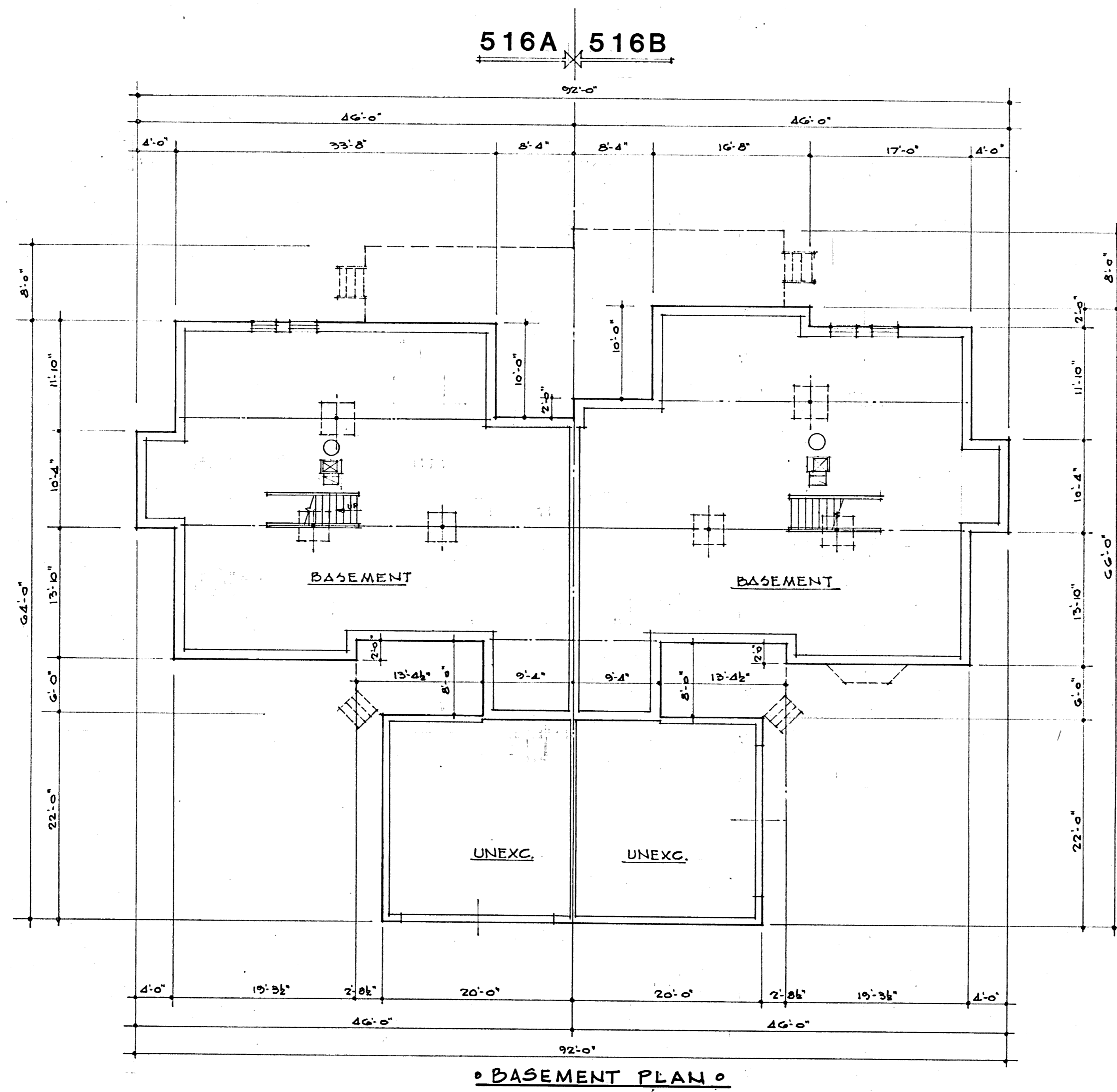
DECLARATION OF CONDOMINIUM FOR THE WOODS AT AUBURN LAKES		
BUILDING 516 LOCATION PLAT		
SCALE 1"=30'	SEPTEMBER, 1996	SHEET OF
BRAUN-PRENOSIL ASSOC., INC. ENGINEERS-SURVEYORS CHAGRIN FALLS, OHIO		

24-45

NOTE: L.C.A. DENOTES "LIMITED COMMON AREA" FOR FIRST FLOOR ONLY.
ALL LAND NOT OCCUPIED BY BUILDINGS OR DESIGNATED AS "LIMITED COMMON AREA" IS "COMMON AREA".



PLAN HOLD CORPORATION • IRVINE, CALIFORNIA
 REGISTERED BY NUMBER 0244
 PROFESSIONAL SEAL AND SIGNATURE REQUIRED
 PLAN HOLD CORPORATION • IRVINE, CALIFORNIA
 REGISTERED BY NUMBER 0244
 PROFESSIONAL SEAL AND SIGNATURE REQUIRED



I DO HEREBY CERTIFY THESE DRAWINGS SHOW GRAPHICALLY ALL PARTICULARS OF BUILDING 516 OF THE DECLARATION OF CONDOMINIUM FOR THE WOODS AT AUBURN LAKES, INCLUDING THE LAYOUT, LOCATION, DESIGNATION AND DIMENSIONS OF EACH FAMILY UNIT AND BUILDING AS CONSTRUCTED.

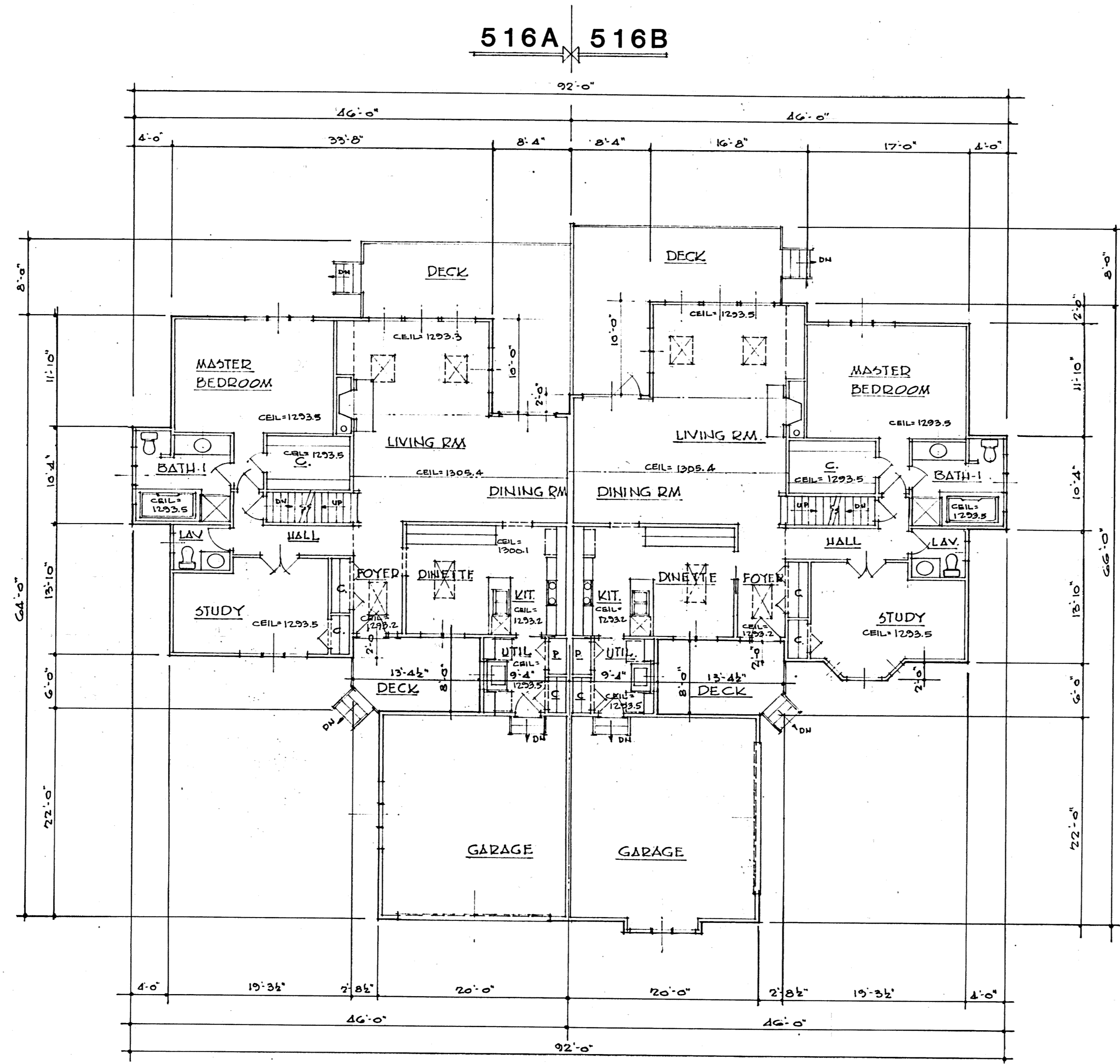
Damon A. Braun 10-3-96
 DAMON A. BRAUN-PROFESSIONAL ENG. # 27049

EXHIBIT "A"

DECLARATION OF CONDOMINIUM FOR THE WOODS AT AUBURN LAKES		
BUILDING 516		
SCALE: 1/8" = 1'-0"	OCTOBER, 1996	SHEET 3 OF 5
BRAUN-PRENOSIL ASSOC., INC. ENGINEERS-SURVEYORS CHAGRIN FALLS, OHIO		

24-46

PLAN/HOLD CORPORATION • FRANK C. GUTERMAN
 REGISTERED PROFESSIONAL ARCHITECT
 10000 WOODS AT AUBURN LAKES, OHIO



° FIRST FLOOR PLAN °

I DO HEREBY CERTIFY THESE DRAWINGS SHOW GRAPHICALLY ALL PARTICULARS OF BUILDING 516 OF THE DECLARATION OF CONDOMINIUM FOR THE WOODS AT AUBURN LAKES, INCLUDING THE LAYOUT, LOCATION, DESIGNATION AND DIMENSIONS OF EACH FAMILY UNIT AND BUILDING AS CONSTRUCTED.

Damon A. Braun 10-3-96
 DAMON A. BRAUN-PROFESSIONAL ENG. #27049

UNIT	BASEMENT ELEV.			GARAGE ELEV.			1st FLOOR ELEV.			2nd FLOOR ELEV.			TOTAL SQ. FT.
	FLOOR	CEILING	SQ. FT.	FLOOR	CEILING	SQ. FT.	FLOOR	CEILING	SQ. FT.	FLOOR	CEILING	SQ. FT.	
516 A	1276.8	1284.6	1502	1283.1	1293.4	415	1285.4	SEE PLAN	1500	1295.3	SEE PLAN	629	2129
516 B	1276.8	1284.6	1502	1283.1	1293.4	420	1285.4	SEE PLAN	1564	1295.3	SEE PLAN	629	2123

EXHIBIT "A"
 DECLARATION OF CONDOMINIUM FOR
 THE WOODS AT AUBURN LAKES

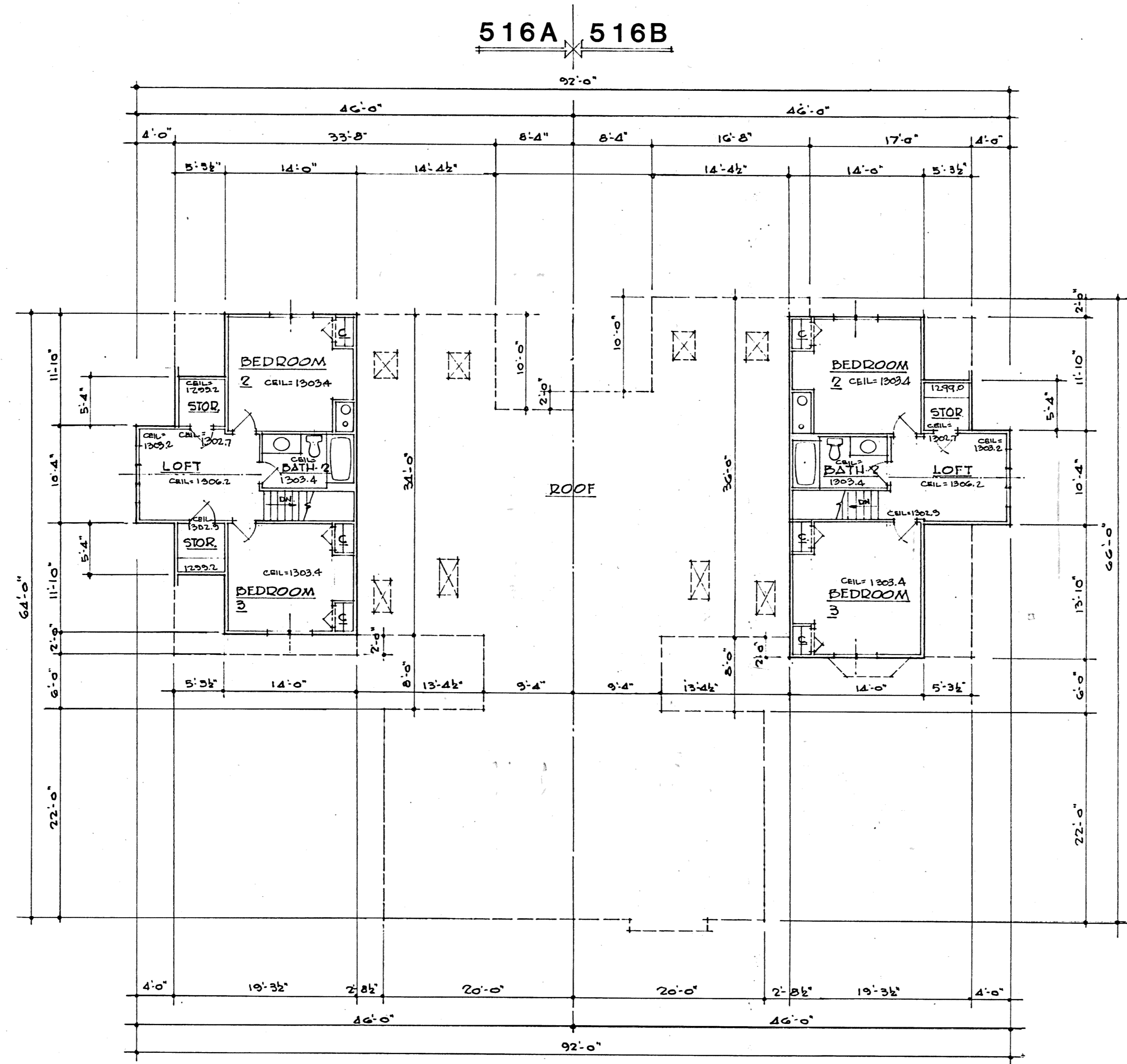
BUILDING 516

SCALE: 1/8"=1'-0" OCTOBER, 1996 SHEET 4 OF 5

BRAUN-PRENOSIL ASSOC., INC.
 ENGINEERS-SURVEYORS CHAGRIN FALLS, OHIO

24-47

RAN HOLD CORPORATION • RAN HOLD CALIFORNIA
 REGISTERED PROFESSIONAL ARCHITECT
 10000 WOODS AT AUBURN LAKES, CHAGRIN FALLS, OHIO 44024
 RAN HOLD CORPORATION • RAN HOLD CALIFORNIA
 REGISTERED PROFESSIONAL ARCHITECT
 10000 WOODS AT AUBURN LAKES, CHAGRIN FALLS, OHIO 44024
 RAN HOLD CORPORATION • RAN HOLD CALIFORNIA
 REGISTERED PROFESSIONAL ARCHITECT
 10000 WOODS AT AUBURN LAKES, CHAGRIN FALLS, OHIO 44024



° SECOND FLOOR PLAN °

I DO HEREBY CERTIFY THESE DRAWINGS SHOW GRAPHICALLY ALL PARTICULARS OF BUILDING 516 OF THE DECLARATION OF CONDOMINIUM FOR THE WOODS AT AUBURN LAKES, INCLUDING THE LAYOUT, LOCATION, DESIGNATION AND DIMENSIONS OF EACH FAMILY UNIT AND BUILDING AS CONSTRUCTED.

Damon A. Braun 10-3-96
 DAMON A. BRAUN-PROFESSIONAL ENG. #27049

EXHIBIT "A"		
DECLARATION OF CONDOMINIUM FOR THE WOODS AT AUBURN LAKES		
BUILDING 516		
SCALE: 1/8" = 1'-0"	OCTOBER 1996	SHEET 5 OF 5
BRAUN-PRENOSIL ASSOC., INC. ENGINEERS-SURVEYORS CHAGRIN FALLS, OHIO		

24-48

PLAN/HOLD CORPORATION • IRVINE, CALIFORNIA
 REGISTERED PROFESSIONAL ARCHITECT
 PROJECT NO. 96-0101
 10/3/96