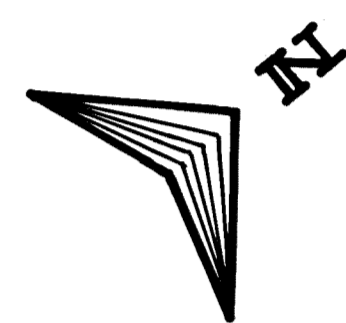
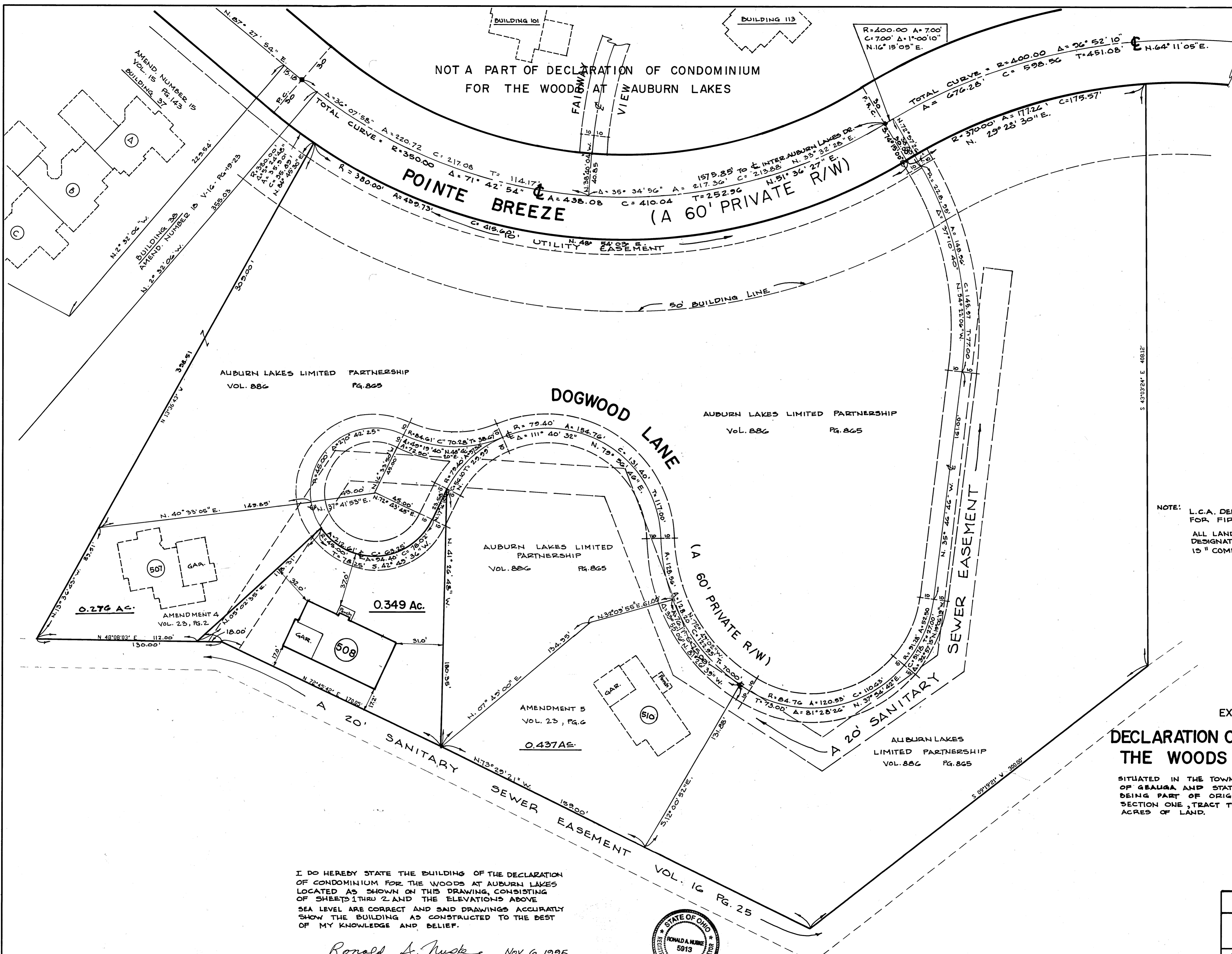


NOT A PART OF DECLARATION OF CONDOMINIUM
FOR THE WOODS AT AUBURN LAKES



NOTE: L.C.A. DENOTES "LIMITED COMMON AREA"
FOR FIRST FLOOR ONLY.
ALL LAND NOT OCCUPIED BY BUILDINGS OR
DESIGNATED AS "LIMITED COMMON AREA"
IS "COMMON AREA".

EXHIBIT "A"
**DECLARATION OF CONDOMINIUM FOR
THE WOODS AT AUBURN LAKES**

SITUATED IN THE TOWNSHIP OF AUBURN, COUNTY
OF GEauga AND STATE OF OHIO AND KNOWN AS
BEING PART OF ORIGINAL AUBURN TOWNSHIP
SECTION ONE, TRACT TWO, AND CONTAINING 0.349
ACRES OF LAND.

I DO HEREBY STATE THE BUILDING OF THE DECLARATION
OF CONDOMINIUM FOR THE WOODS AT AUBURN LAKES
LOCATED AS SHOWN ON THIS DRAWING, CONSISTING
OF SHEETS 1 THRU 2 AND THE ELEVATIONS ABOVE
SEA LEVEL ARE CORRECT AND SAID DRAWINGS ACCURATELY
SHOW THE BUILDING AS CONSTRUCTED TO THE BEST
OF MY KNOWLEDGE AND BELIEF.

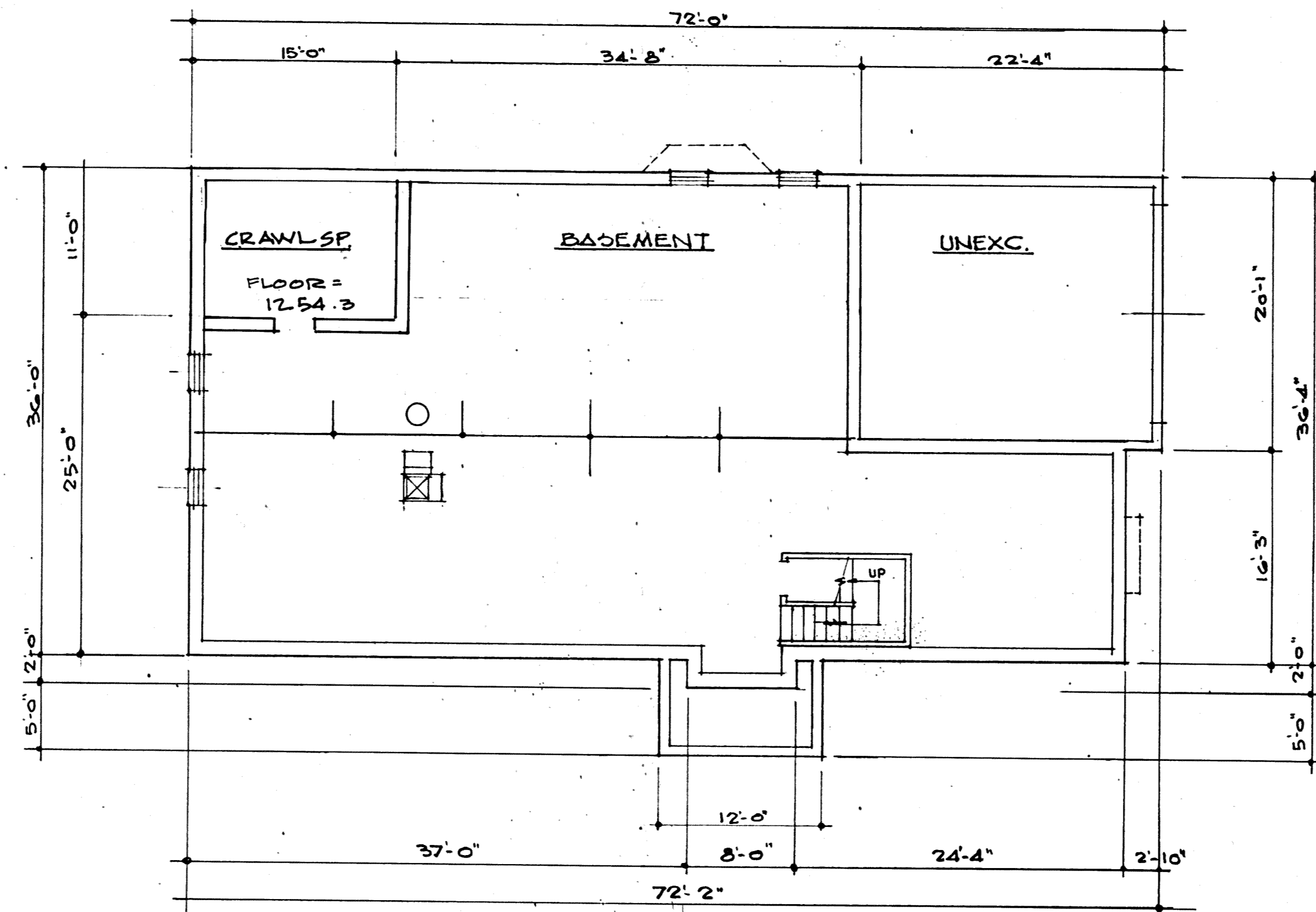
Ronald A. Nuske Nov. 6, 1995
RONALD A. NUSKE REG. SURVEYOR # 5913



DECLARATION OF CONDOMINIUM FOR THE WOODS AT AUBURN LAKES		
BUILDING 508 LOCATION PLAT		
SCALE 1"=30'	OCTOBER, 1995	SHEET 2 OF 5
BRAUN-PRENOSIL ASSOC., INC. ENGINEERS-SURVEYORS CHAGRIN FALLS, OHIO		

23-29

508



• BASEMENT PLAN •

I DO HEREBY CERTIFY THESE DRAWINGS SHOW GRAPHICALLY ALL PARTICULARS OF BUILDING 508 OF THE DECLARATION OF CONDOMINIUM FOR THE WOODS AT AUBURN LAKES, INCLUDING THE LAYOUT, LOCATION, DESIGNATION AND DIMENSIONS OF EACH FAMILY UNIT AND BUILDING AS CONSTRUCTED.

Damon A. Braun 11-9-95
 DAMON A. BRAUN, PROFESSIONAL ENGINEER # 27049

UNIT	BASEMENT ELEV.		SQ. FT.	GARAGE ELEV.		SQ. FT.	1st. FLOOR ELEV.		SQ. FT.	2nd. FLOOR ELEV.		SQ. FT.	1st & 2nd Flr. TOTAL SQ. FT.
	FLOOR	CEILING		FLOOR	CEILING		FLOOR	CEILING		FLOOR	CEILING		
508	1250.0	1257.8	1976	1256.6	1266.7	442	1258.6	SEE PLAN	2134	1267.5	1275.6	672	2826

EXHIBIT "A"

DECLARATION OF CONDOMINIUM FOR THE WOODS AT AUBURN LAKES

BUILDING 508

SCALE: 1/8" = 1'-0" Nov. , 1995 SHEET 3 OF 5

BRAUN-PRENOSIL ASSOC., INC.
 ENGINEERS-SURVEYORS CHAGRIN FALLS, OHIO

23-30

PLAN/H/O/D CORPORATION • IRVINE, CALIFORNIA
 REGISTERED NUMBER 07284
 REGIONAL OFFICE OF IRVINE, CALIFORNIA
 PLAN/H/O/D CORPORATION • IRVINE, CALIFORNIA
 REGISTERED NUMBER 07284
 REGIONAL OFFICE OF IRVINE, CALIFORNIA
 PLAN/H/O/D CORPORATION • IRVINE, CALIFORNIA
 REGISTERED NUMBER 07284
 REGIONAL OFFICE OF IRVINE, CALIFORNIA

