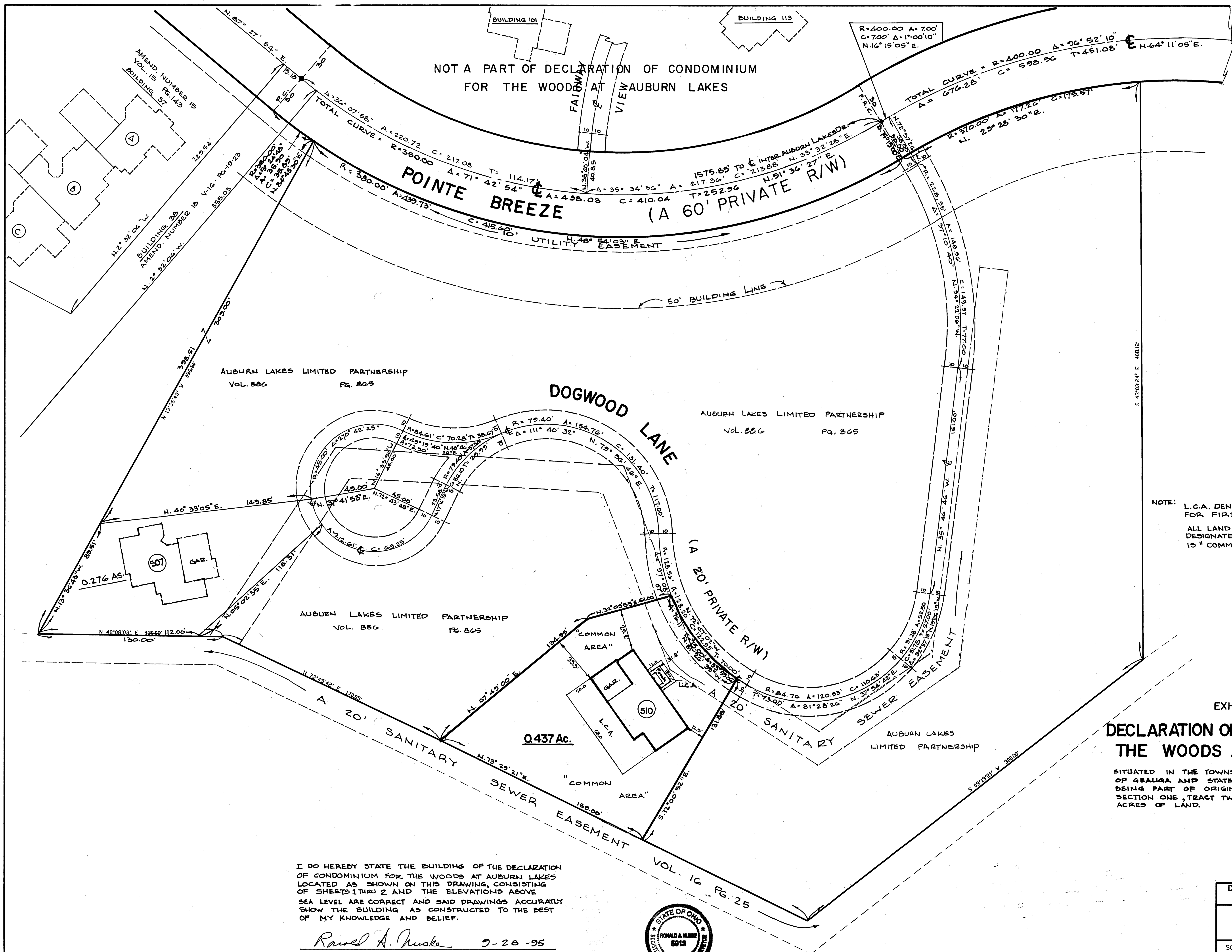


NOT A PART OF DECLARATION OF CONDOMINIUM
FOR THE WOODS AT AUBURN LAKES



NOTE: L.C.A. DENOTES "LIMITED COMMON AREA" FOR FIRST FLOOR ONLY.
ALL LAND NOT OCCUPIED BY BUILDINGS OR DESIGNATED AS "LIMITED COMMON AREA" IS "COMMON AREA".

EXHIBIT "A"
DECLARATION OF CONDOMINIUM FOR THE WOODS AT AUBURN LAKES

SITUATED IN THE TOWNSHIP OF AUBURN, COUNTY OF GEauga AND STATE OF OHIO AND KNOWN AS BEING PART OF ORIGINAL AUBURN TOWNSHIP SECTION ONE, TRACT TWO, AND CONTAINING 0.437 ACRES OF LAND.

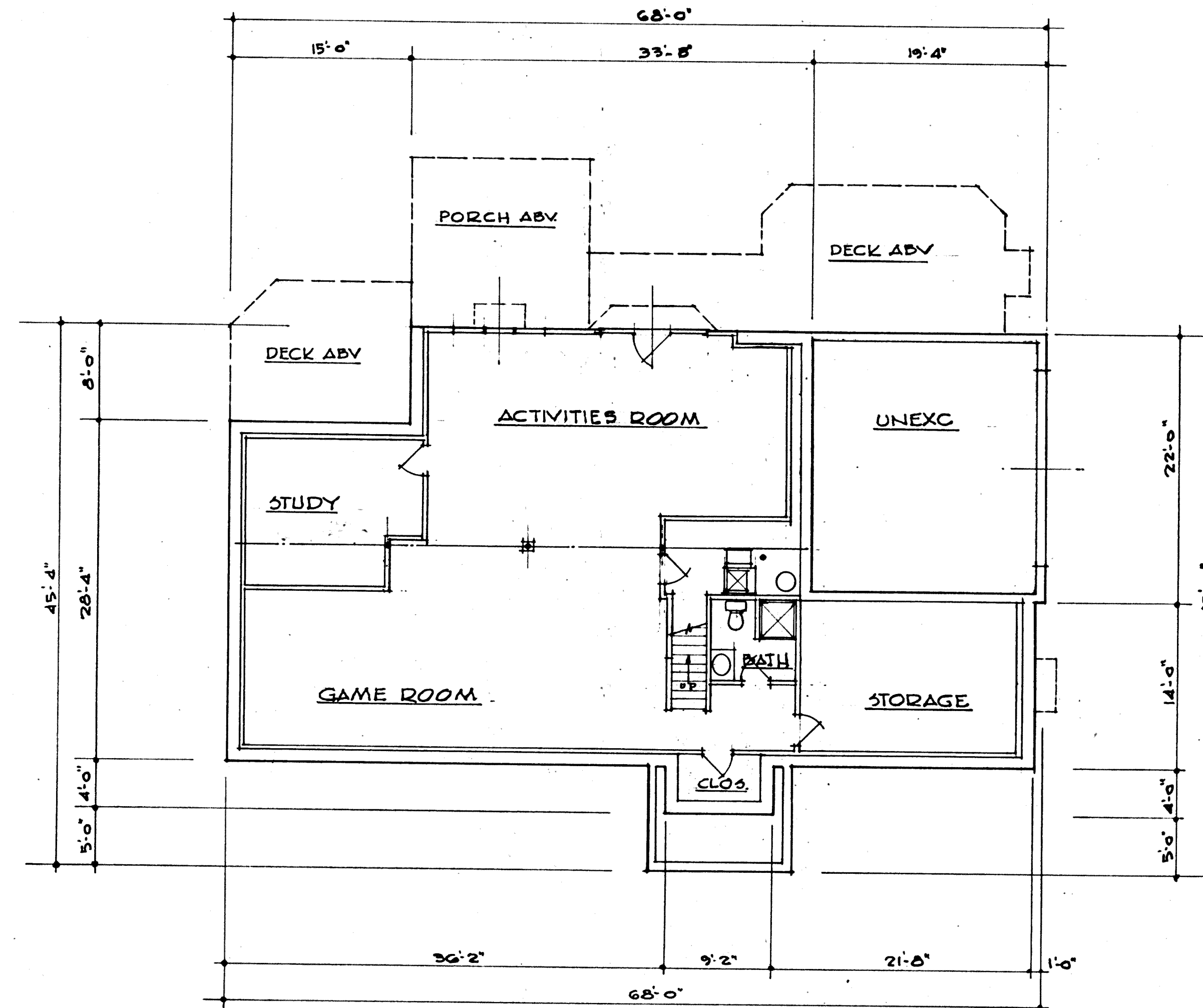
I DO HEREBY STATE THE BUILDING OF THE DECLARATION OF CONDOMINIUM FOR THE WOODS AT AUBURN LAKES LOCATED AS SHOWN ON THIS DRAWING, CONSISTING OF SHEETS 1 THRU 2 AND THE ELEVATIONS ABOVE SEA LEVEL ARE CORRECT AND SAID DRAWINGS ACCURATELY SHOW THE BUILDING AS CONSTRUCTED TO THE BEST OF MY KNOWLEDGE AND BELIEF.

Ronald A. Nuske 9-28-95
RONALD A. NUSKE REG. SURVEYOR # 5915



DECLARATION OF CONDOMINIUM FOR THE WOODS AT AUBURN LAKES		
BUILDING 510 LOCATION PLAT		
SCALE 1"=30'	SEPT., 1995	SHEET 2 OF 5
BRAUN-PRENOSIL ASSOC., INC. ENGINEERS-SURVEYORS CHAGRIN FALLS, OHIO		

510



• LOWER LEVEL PLAN •
1/8"=1'-0"

I DO HEREBY CERTIFY THESE DRAWINGS SHOW GRAPHICALLY ALL PARTICULARS OF BUILDING 510 OF THE DECLARATION OF CONDOMINIUM FOR THE WOODS AT AUBURN LAKES INCLUDING THE LAYOUT, LOCATION, DESIGNATION AND DIMENSIONS OF EACH FAMILY UNIT AND BUILDING AS CONSTRUCTED.

Damon A. Braun 9-28-95
DAMON A. BRAUN, PROFESSIONAL ENGINEER #27049

UNIT	LOWER LEVEL ELEV.		SQ. FT.	GARAGE ELEV.		SQ. FT.	1st FLOOR ELEV.		SQ. FT.	2nd FLOOR ELEV.		SQ. FT.	1st & 2nd Flr TOTAL SQ. FT.
	FLOOR	CEILING		FLOOR	CEILING		FLOOR	CEILING		FLOOR	CEILING		
510	1263.3	1271.2	1420	1270.0	1281.2	427	1272.3	SEE PLAN	1420	1281.2	1289.2	782.5 2650.2	2215

EXHIBIT "A"

DECLARATION OF CONDOMINIUM FOR THE WOODS AT AUBURN LAKES

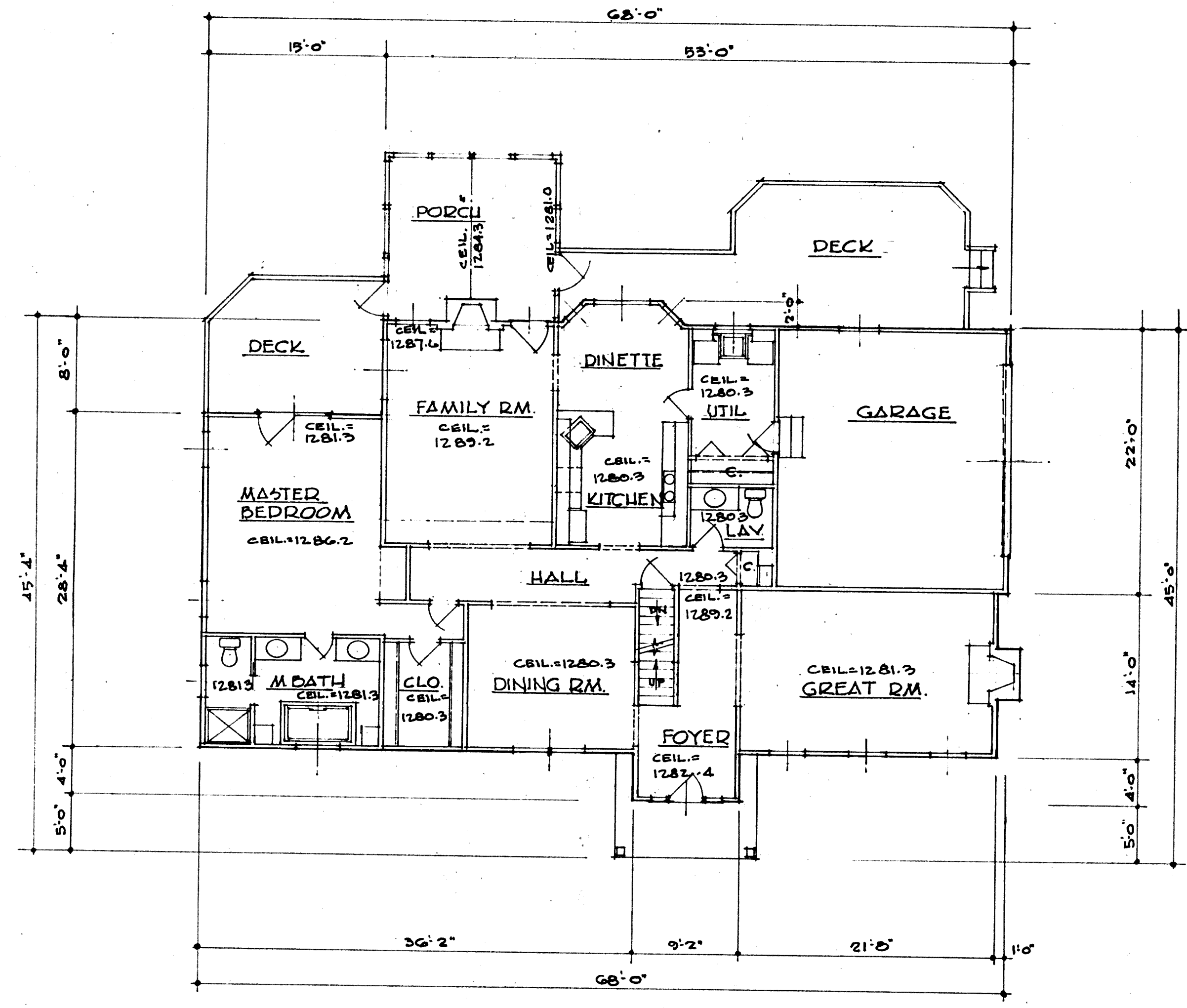
BUILDING 510

SCALE: 1/8"=1'-0" | Sept., 1995 | SHEET 3 OF 5

BRAUN-PRENOSIL ASSOC., INC.
ENGINEERS-SURVEYORS CHAGRIN FALLS, OHIO

23-8

510



• FIRST FLOOR PLAN •
1/8" = 1'-0"

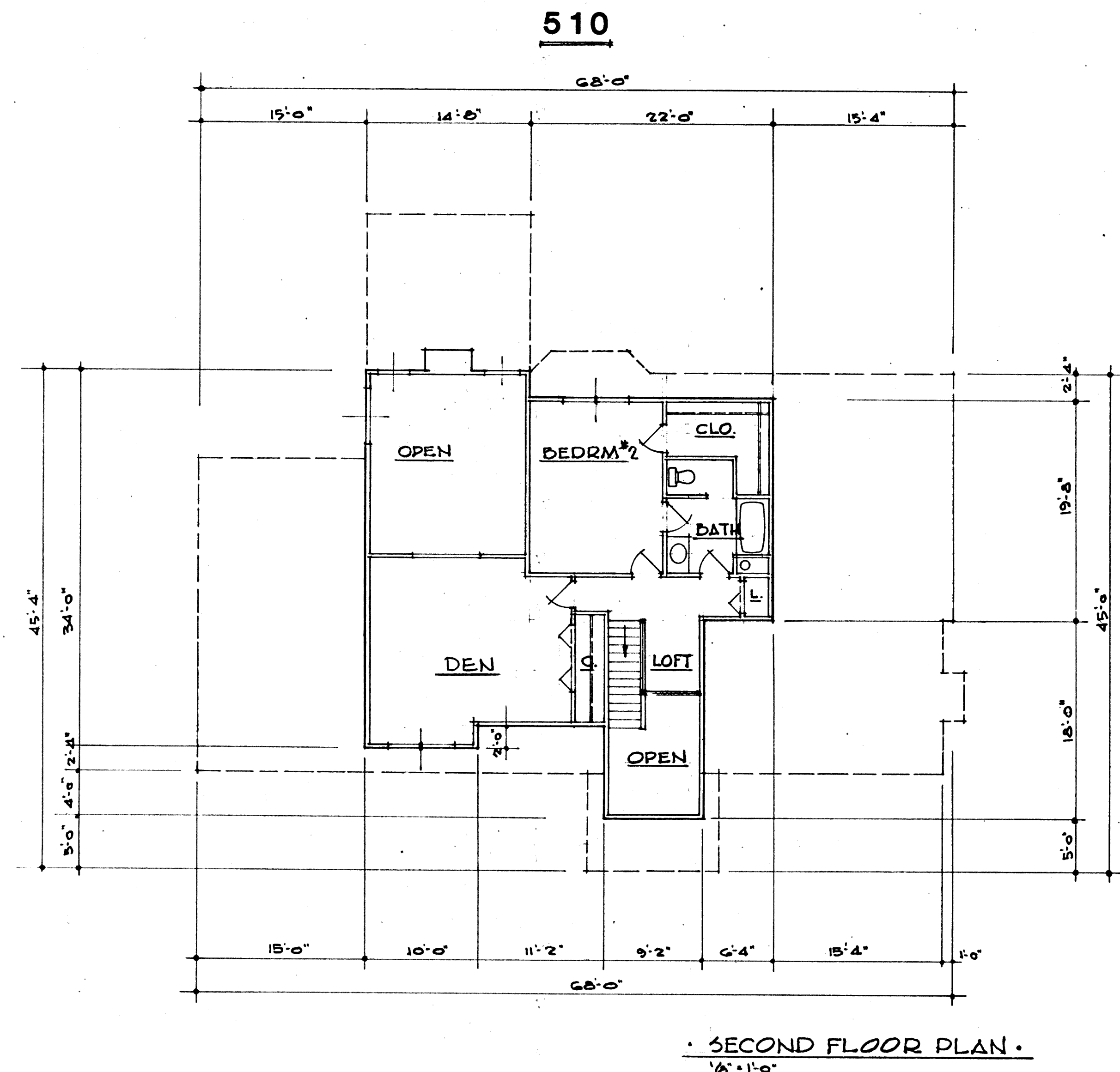
I DO HEREBY CERTIFY THESE DRAWINGS SHOW GRAPHICALLY ALL PARTICULARS OF BUILDING 510 OF THE DECLARATION OF CONDOMINIUM FOR THE WOODS AT AUBURN LAKES, INCLUDING THE LAYOUT, LOCATION, DESIGNATION AND DIMENSIONS OF EACH FAMILY UNIT AND BUILDING AS CONSTRUCTED.

Damon A. Braun 9-28-95
DAMON A. BRAUN, PROFESSIONAL ENGINEER # 27049

EXHIBIT "A"

DECLARATION OF CONDOMINIUM FOR THE WOODS AT AUBURN LAKES		
BUILDING 510		
SCALE: 1/8" = 1'-0"	DEPT., 1995	SHEET 4 OF 5
BRAUN-PRENOSIL ASSOC., INC. ENGINEERS-SURVEYORS CHAGRIN FALLS, OHIO		

23-9



• SECOND FLOOR PLAN •
1/8" = 1'-0"

I DO HEREBY CERTIFY THESE DRAWINGS SHOW GRAPHICALLY ALL PARTICULARS OF BUILDING 510 OF THE DECLARATION OF CONDOMINIUM FOR THE WOODS AT AUBURN LAKES, INCLUDING THE LAYOUT, LOCATION, DESIGNATION AND DIMENSIONS OF EACH FAMILY UNIT AND BUILDING AS CONSTRUCTED.

Damon A. Braun 9-28-95
 DAMON A. BRAUN, PROFESSIONAL ENGINEER # 27049

EXHIBIT "A"		
DECLARATION OF CONDOMINIUM FOR THE WOODS AT AUBURN LAKES		
BUILDING 510		
SCALE 1/8" = 1'-0"	SEPT., 1995	SHEET 5 OF 5
BRAUN-PRENOSIL ASSOC., INC. ENGINEERS-SURVEYORS CHAGRIN FALLS, OHIO		

23-10

PLAN HOLD CORPORATION • IRVINE, CALIFORNIA
 REGISTERED PROFESSIONAL ARCHITECT
 PROJECT NO. 95-0101