

R = 300.00  
A = 5.00  
C = 5.00  
T = 2.50  
Δ = 0° 57' 15"  
N. 76° 47' 30" W.

AUBURN LAKES LIMITED PARTNERSHIP  
VOL. 886 PG. 805

AUBURN LAKES LIMITED PARTNERSHIP  
VOL. 886 PG. 805

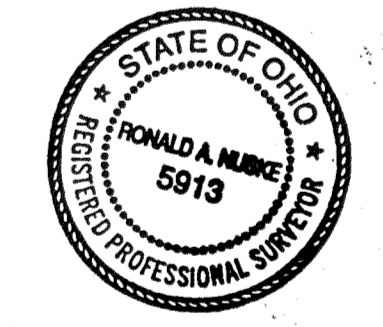
AUBURN LAKES LIMITED PARTNERSHIP  
VOL. 886 PG. 805

EXHIBIT "A"  
**DECLARATION OF CONDOMINIUM FOR THE WOODS AT AUBURN LAKES**

SITUATED IN THE TOWNSHIP OF AUBURN, COUNTY OF DEAGA AND STATE OF OHIO AND KNOWN AS BEING PART OF ORIGINAL AUBURN TOWNSHIP SECTION ONE, TRACT TWO, AND CONTAINING 0.528 ACRES OF LAND.

I DO HEREBY STATE THE BUILDING OF THE DECLARATION OF CONDOMINIUM FOR THE WOODS AT AUBURN LAKES IS LOCATED AS SHOWN ON THIS DRAWING, CONSISTING OF SHEETS 1 THRU 2 AND THE ELEVATIONS ABOVE SEA LEVEL ARE CORRECT AND SAID DRAWINGS ACCURATELY SHOW THE BUILDING 638-639 AS CONSTRUCTED TO THE BEST OF MY KNOWLEDGE AND BELIEF.

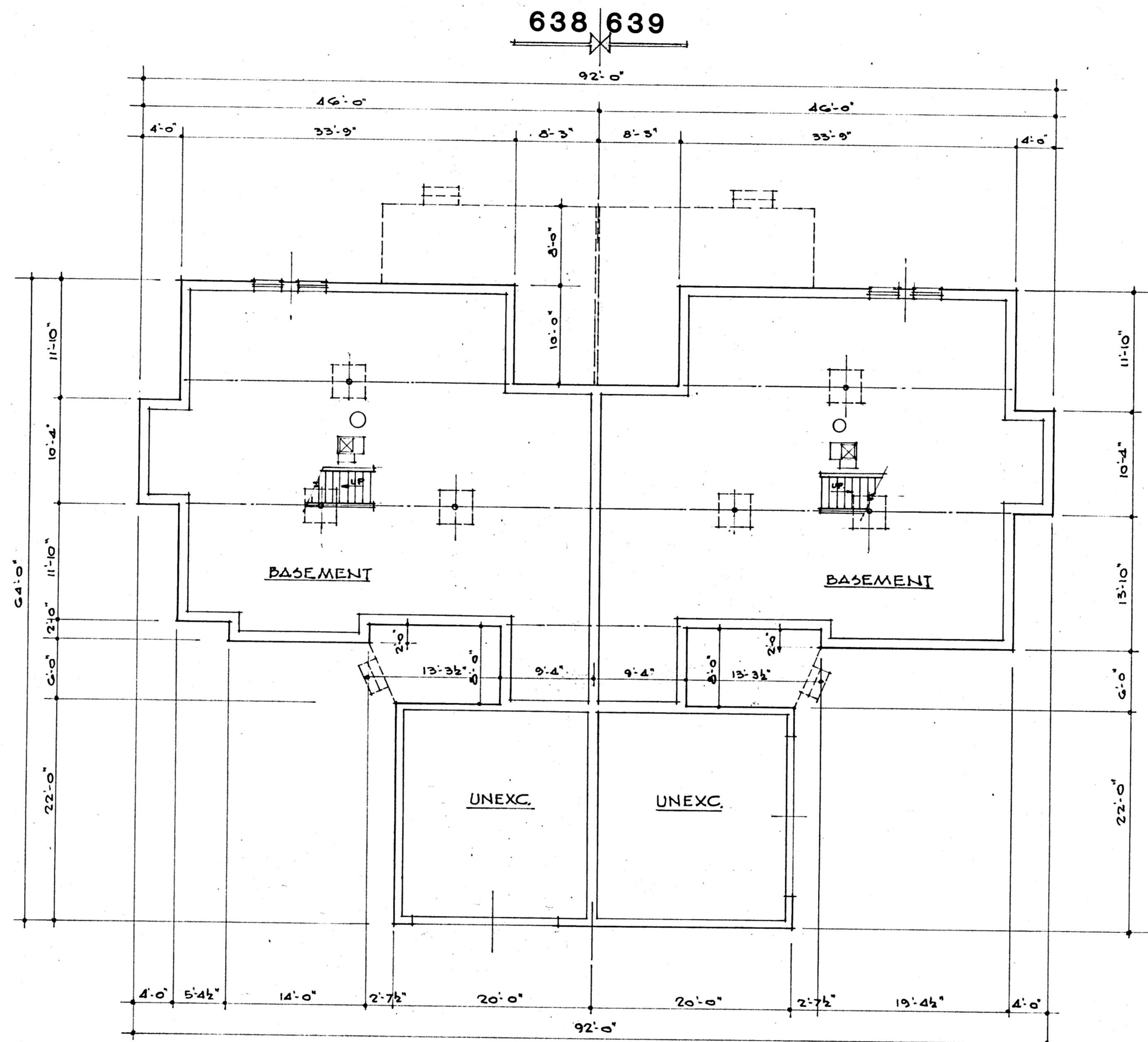
*Ronald A. Nuske* 8-29-95  
RONALD A. NUSKE REG. SURVEYOR #5913



NOTE: L.C.A. DENOTES "LIMITED COMMON AREA" FOR FIRST FLOOR ONLY.  
ALL LAND NOT OCCUPIED BY BUILDINGS OR DESIGNATED AS "LIMITED COMMON AREA" IS "COMMON AREA"

DECLARATION OF CONDOMINIUM FOR THE WOODS AT AUBURN LAKES	
<b>BUILDING 638-639 LOCATION PLAT</b>	
SCALE 1" = 30'	AUG, 1995 SHEET 2 of 5
BRAUN - PRENSIL ASSOC. INC. ENGINEERS - SURVEYORS Chagrin Falls, Ohio	

22-114



• BASEMENT PLAN •  
1/8" = 1'-0"

I DO HEREBY CERTIFY THESE DRAWINGS SHOW GRAPHICALLY ALL PARTICULARS OF BUILDING 638-639 OF THE DECLARATION OF CONDOMINIUM FOR THE WOODS AT AUBURN LAKES, INCLUDING THE LAYOUT, LOCATION, DESIGNATION AND DIMENSIONS OF EACH FAMILY UNIT AND BUILDING AS CONSTRUCTED.

*Damon A. Braun* 8-29-95  
DAMON A. BRAUN, PROFESSIONAL ENGINEER #27049

UNIT	BASEMENT ELEV.		SQ. FT.	GARAGE ELEV.		SQ. FT.	1st. FLOOR ELEV.		SQ. FT.	2nd. FLOOR ELEV.		SQ. FT.	TOTAL SQ. FT.
	FLOOR	CEILING		FLOOR	CEILING		FLOOR	CEILING		FLOOR	CEILING		
638	1229.9	1237.8	1490	1236.8	1246.8	412	1238.7	SEE PLAN	1400	1247.9	SEE PLAN	591	2081
639	1232.6	1240.5	1500	1239.7	1249.7	420	1241.4	SEE PLAN	1500	1250.6	SEE PLAN	579	2079

EXHIBIT "A"

DECLARATION OF CONDOMINIUM FOR THE WOODS AT AUBURN LAKES

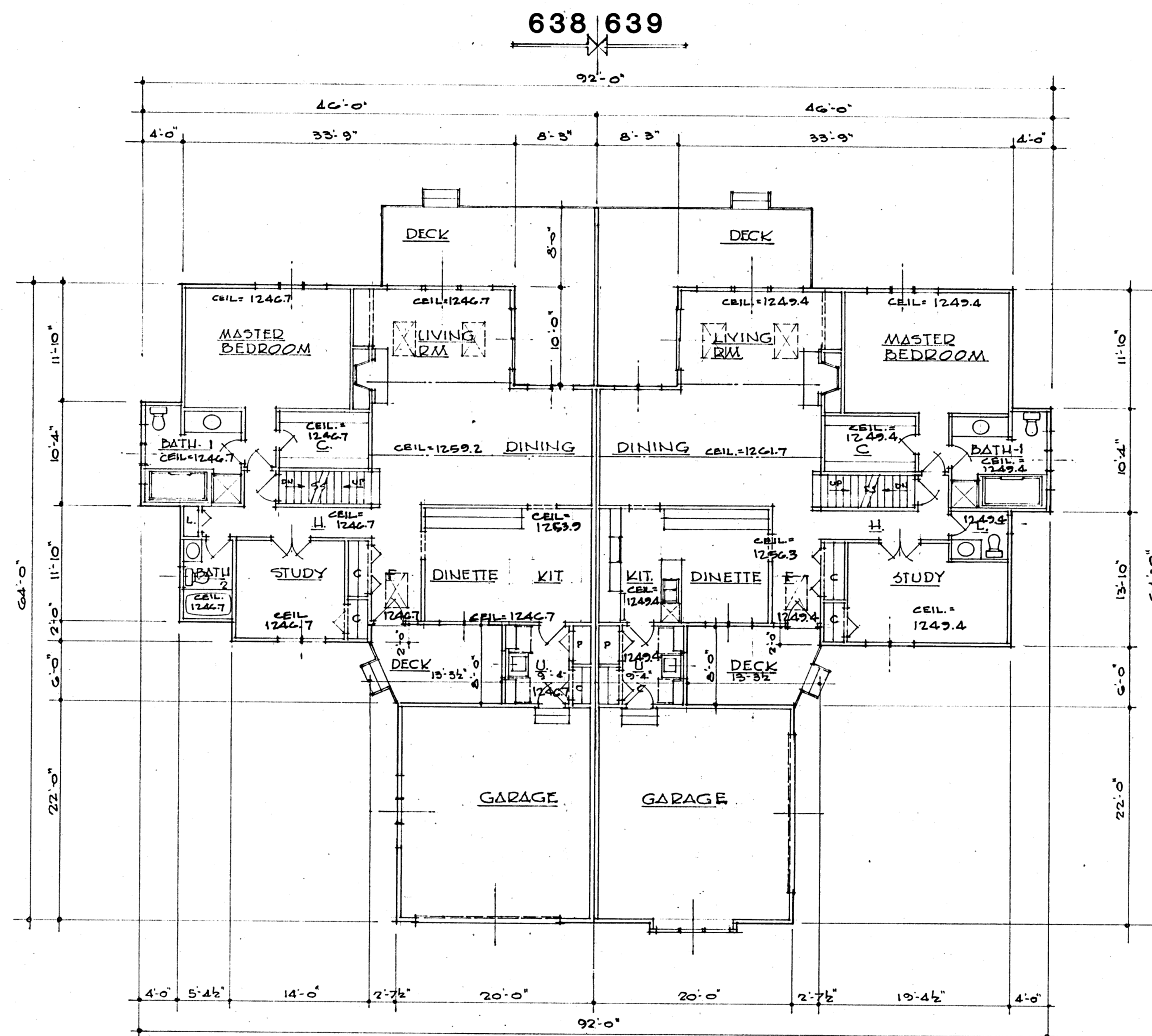
**BUILDING 638-639**

SCALE: 1/8" = 1'-0" | AUGUST, 1995 | SHEET 3 OF 5

BRAUN-PRENOSIL ASSOC., INC.  
ENGINEERS-SURVEYORS CHAGRIN FALLS, OHIO

22-115

PLAN HOLD CORPORATION • IRVINE, CALIFORNIA  
 REGISTERED PROFESSIONAL ARCHITECT  
 PLAN HOLD CORPORATION • IRVINE, CALIFORNIA  
 REGISTERED PROFESSIONAL ARCHITECT  
 PLAN HOLD CORPORATION • IRVINE, CALIFORNIA  
 REGISTERED PROFESSIONAL ARCHITECT



• FIRST FLOOR PLAN •  
1/8" = 1'-0"

I DO HEREBY CERTIFY THESE DRAWINGS SHOW GRAPHICALLY ALL PARTICULARS OF BUILDING 638-639 OF THE DECLARATION OF CONDOMINIUM FOR THE WOODS AT AUBURN LAKES, INCLUDING THE LAYOUT, LOCATION, DESIGNATION AND DIMENSIONS OF EACH FAMILY UNIT AND BUILDING AS CONSTRUCTED.

*Damon A. Braun* 8-29-95  
DAMON A. BRAUN, PROFESSIONAL ENGINEER # 27049

EXHIBIT "A"

DECLARATION OF CONDOMINIUM FOR THE WOODS AT AUBURN LAKES

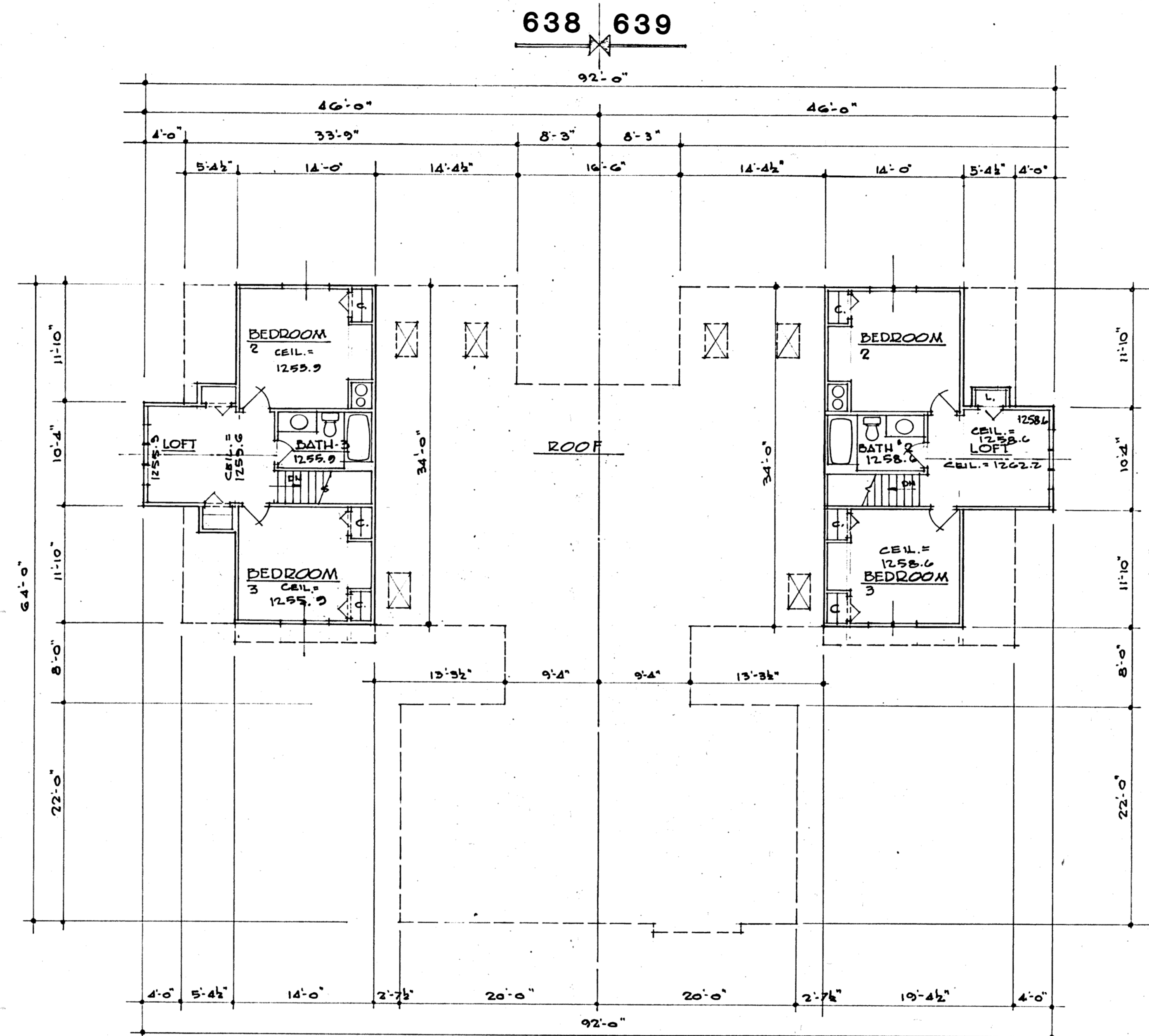
BUILDING 638-639

SCALE: 1/8" = 1'-0" AUGUST, 1995 SHEET 4 OF 5

BRAUN-PRENOSIL ASSOC., INC.  
ENGINEERS-SURVEYORS CHAGRIN FALLS, OHIO

22-116

PLAN HOLD CORPORATION • IRVINE, CALIFORNIA  
 REGISTERED PROFESSIONAL ARCHITECT  
 REPORT NUMBER: 03/01/95  
 PROJECT: 638-639



• SECOND FLOOR PLAN •  
1/8" = 1'-0"

I DO HEREBY CERTIFY THESE DRAWINGS SHOW GRAPHICALLY ALL PARTICULARS OF BUILDING 638-639 OF THE DECLARATION OF CONDOMINIUM FOR THE WOODS AT AUBURN LAKES, INCLUDING THE LAYOUT, LOCATION, DESIGNATION AND DIMENSIONS OF EACH FAMILY UNIT AND BUILDING AS CONSTRUCTED.

*Damon A. Braun* 8-29-95  
 DAMON A. BRAUN, PROFESSIONAL ENGINEER #27049

EXHIBIT "A"		
DECLARATION OF CONDOMINIUM FOR THE WOODS AT AUBURN LAKES		
BUILDING 638-639		
SCALE: 1/8" = 1'-0"	AUGUST, 1995	SHEET 5 OF 5
BRAUN-PRENOSIL ASSOC., INC. ENGINEERS-SURVEYORS CHAGRIN FALLS, OHIO		

22-116A

PLAN/HOLD CORPORATION • IRVINE, CALIFORNIA  
 REGISTERED PROFESSIONAL ARCHITECT  
 REGIONAL OFFICE OF IRVINE, CALIFORNIA  
 PLAN/HOLD CORPORATION • IRVINE, CALIFORNIA  
 REGISTERED PROFESSIONAL ARCHITECT  
 REGIONAL OFFICE OF IRVINE, CALIFORNIA  
 PLAN/HOLD CORPORATION • IRVINE, CALIFORNIA  
 REGISTERED PROFESSIONAL ARCHITECT  
 REGIONAL OFFICE OF IRVINE, CALIFORNIA