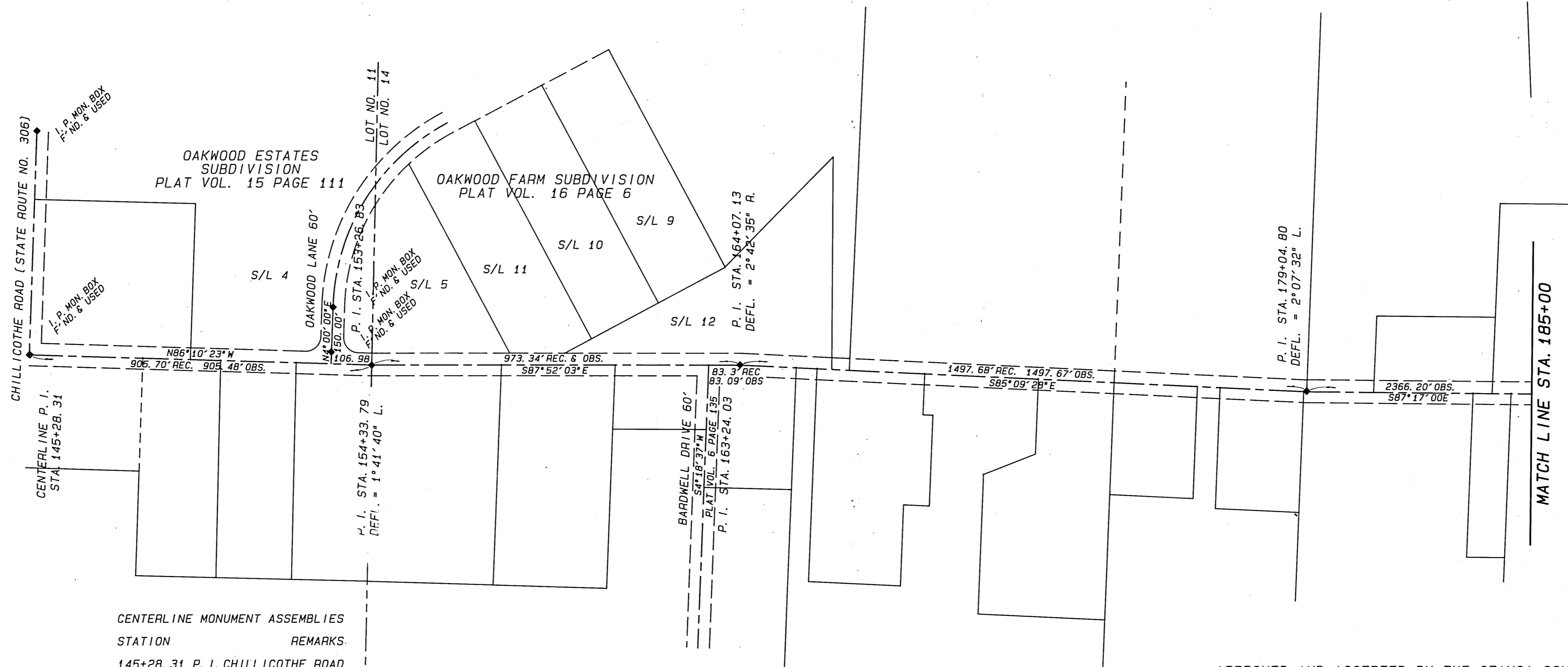
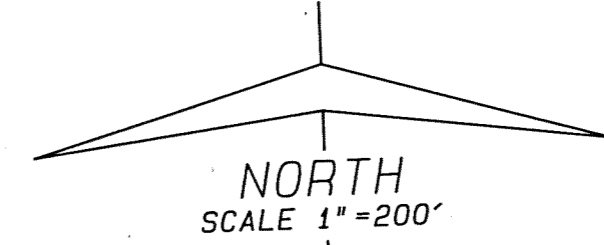


CENTERLINE SURVEY OF WILSON MILLS ROAD

THROUGH PARTS OF
ORIGINAL LOTS NOS. 11, 14, 15, 18, & 19
TRACT NO. 2
CHESTER TOWNSHIP, GEAUGA COUNTY, OHIO
SCALE 1" = 200'

MAY, 1990

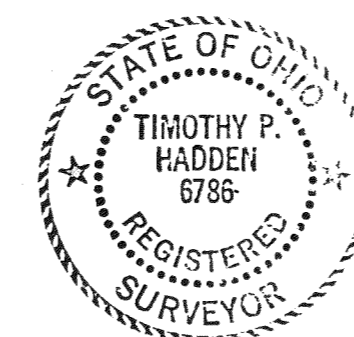


CENTERLINE MONUMENT ASSEMBLIES	REMARKS
STATION	
145+28.31	P. I. CHILLICOTHE ROAD
154+33.79	P. I.
164+07.13	P. I.
179+04.80	P. I.
193+69.77	P. I. PARKER DRIVE
202+71.00	P. I.
207+64.74	P. I.
209+97.87	P. I.
213+68.85	P. I.
216+06.76	P. I.
217+09.09	P. I.
220+15.85	P. I.
221+49.91	P. I.
224+10.21	P. I.
225+64.39	P. I.
228+81.00	(AHEAD) EQ. STA.
231+27.22	P. I.
245+17.00	P. I.
265+37.20	P. I. HEATH ROAD

CENTERLINE MONUMENT ASSEMBLIES WILL BE SET AT THE DIRECTION OF THE FIELD ENGINEER AT THE PRECEDING LOCATIONS

I HEREBY CERTIFY THAT THIS PLAT IS A TRUE DELINEATION OF A SURVEY PERFORMED BY ME AND THAT THE COURSES, DISTANCES, AND OTHER PARTICULARS SHOWN HEREON ARE CORRECT TO THE BEST OF MY KNOWLEDGE AND BELIEF.

Timothy P. Hadden
TIMOTHY P. HADDEN OHIO P. S. NO. 6786



APPROVED AND ACCEPTED BY THE GEAUGA COUNTY ENGINEER THIS 16th DAY OF August, 1994.

455790

Robert J. Platte
ROBERT J. PLATTE
GEAUGA COUNTY ENGINEER

RECEIVED FOR RECORD THIS 16th DAY OF August, 1994 AND RECORDED IN PLAT VOLUME 22, PAGE 26 OF THE GEAUGA COUNTY PLAT RECORDS.

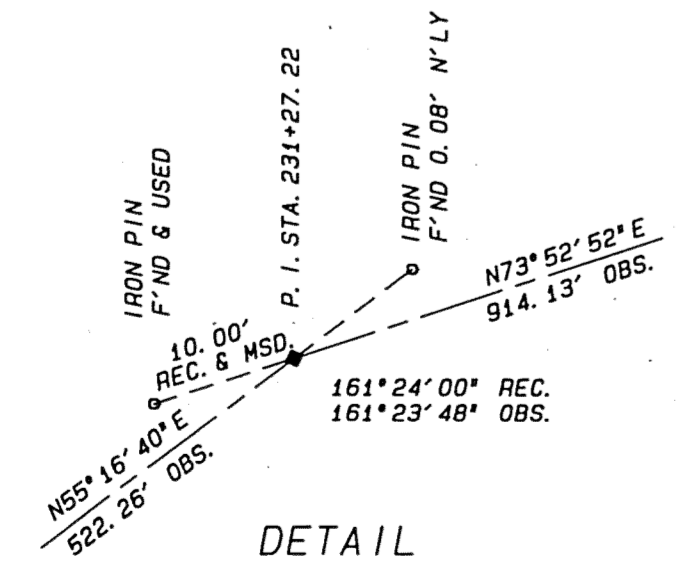
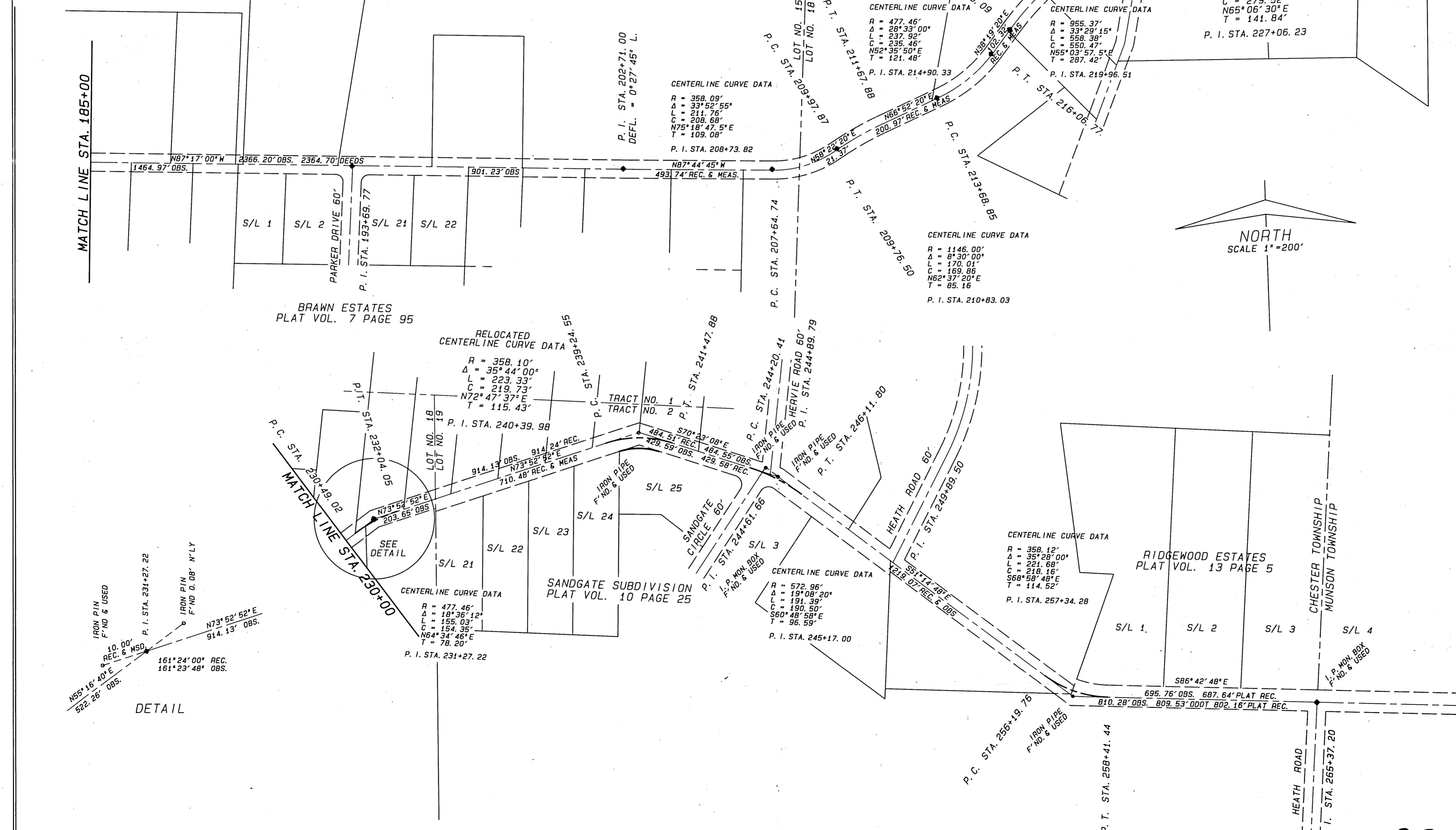
Catherine A. Heiden
CATHERINE A. HEIDEN
GEAUGA COUNTY RECORDER

22-26

NUMBER
 DRAWING NUMBER
 Vol. 22 Pg. 26
 DRAWING
 PLAN HOLD CORPORATION • IRVINE, CALIFORNIA
 RECORDED BY NUMBER OF PLAT
 REVISION LIST OF PLAT ON THIS LINE

CENTERLINE SURVEY OF WILSON MILLS ROAD

THROUGH PARTS OF
ORIGINAL LOTS NOS. 11, 14, 15, 18, & 19
TRACT NO. 2
CHESTER TOWNSHIP, GEauga COUNTY, OHIO
SCALE 1" = 200'



NUMBER

DRAWING NUMBER

DRAWING NUMBER

Vol. 22 Pg. 27

DRAWING

22-27
047-06-107