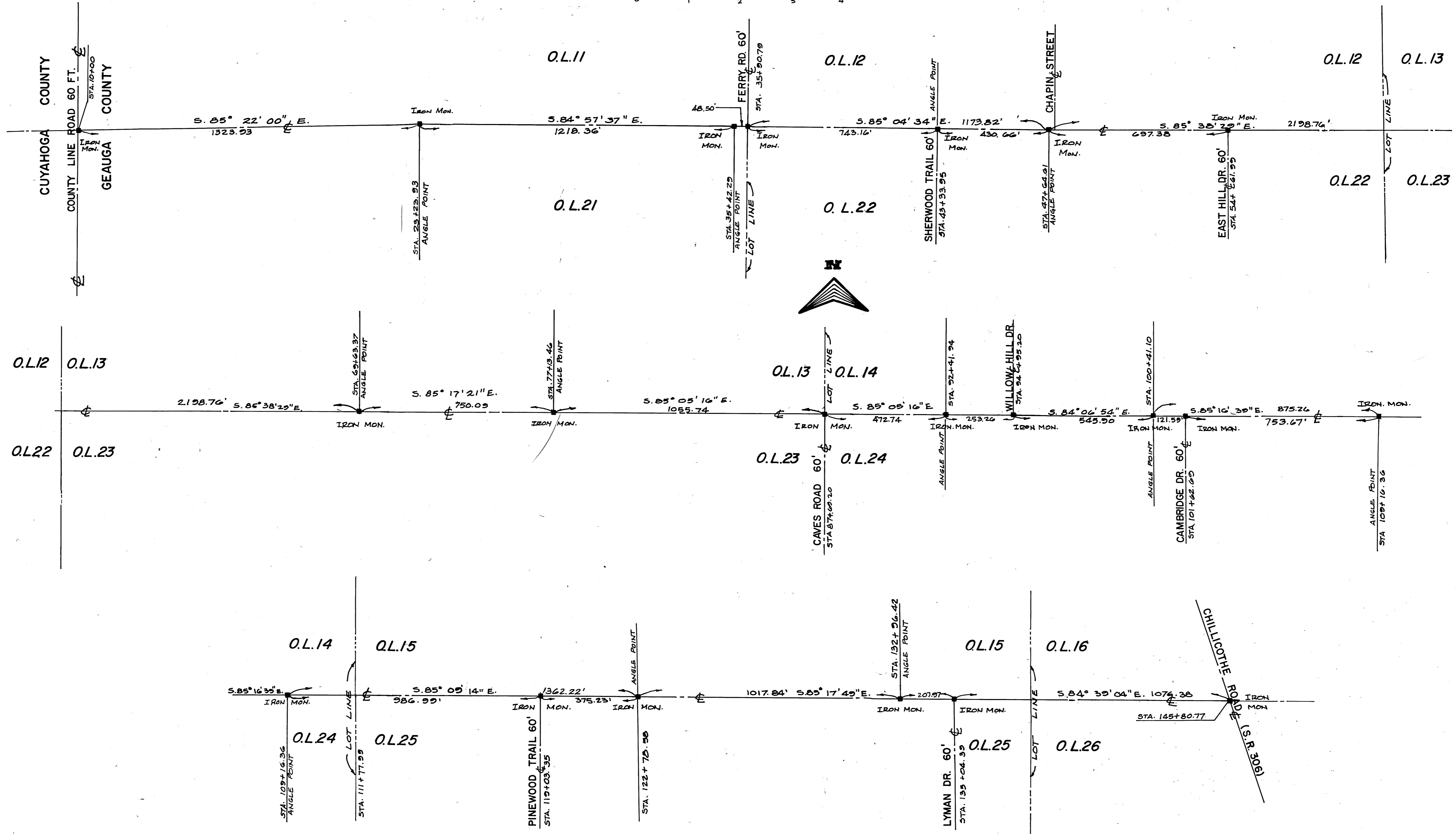
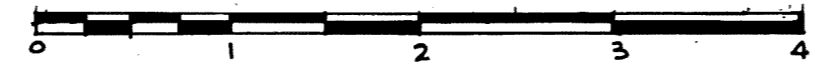


CENTERLINE PLAT

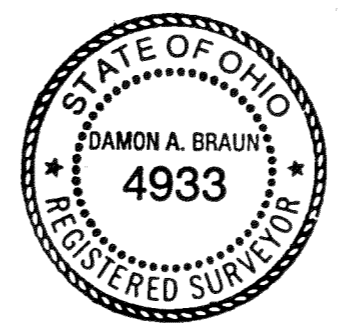
C.H. 39
 MULBERRY ROAD
 SECTION A-D
 CHESTER TOWNSHIP
 GEAUGA COUNTY



WE DO HEREBY CERTIFY THAT WE HAVE SURVEYED THE CENTERLINE OF MULBERRY ROAD BETWEEN THE LIMITS SHOWN AND PREPARED THIS PLAT, ALL OF WHICH ARE CORRECT TO THE BEST OF OUR KNOWLEDGE AND BELIEF.

BRAUN-PRENOSIL ASSOCIATES INC.
 ENGINEERS - SURVEYORS

Damon A. Braun 8/11/94
 DAMON A. BRAUN Professional Surveyor No. 4933



Received for record 15th day of August 1994
 Recorded this 15th day of August 1994 in
 Plat Volume 22 Page 25 of Geauga Co.
 Records Catherine A. Heiden, Recorder

22-25

PLAN HOLD CORPORATION • ENGINE CALIFORNIA
 RECORD BY NUMBER 0184

PLAN HOLD CORPORATION • ENGINE CALIFORNIA
 RECORD BY NUMBER 0184

PLAN HOLD CORPORATION • ENGINE CALIFORNIA
 RECORD BY NUMBER 0184