

CENTERLINE SURVEY PLAT

GEAUGA COUNTY

MUNN ROAD - C.H. 32

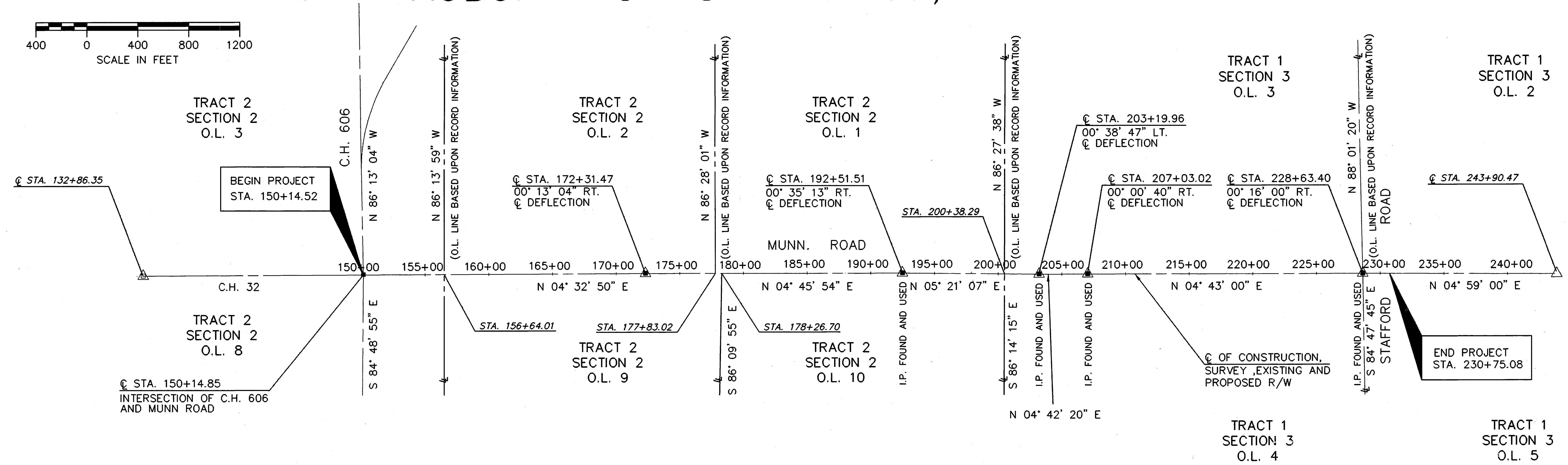
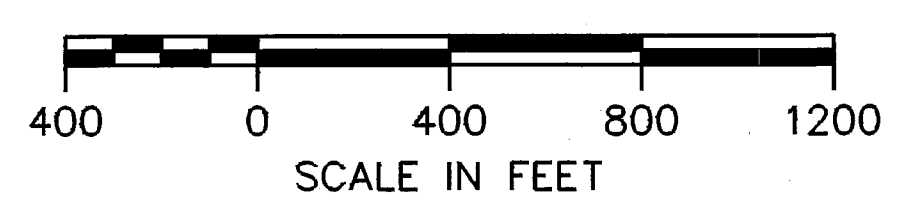
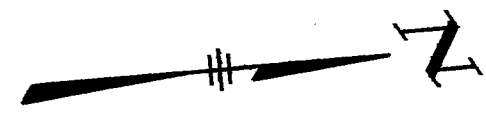
AUBURN TOWNSHIP - T6N, R8W

FHWA REGION	STATE	PROJECT	
5	OHIO		

88
107

GEAUGA COUNTY
GEA-MUNN ROAD

1
20



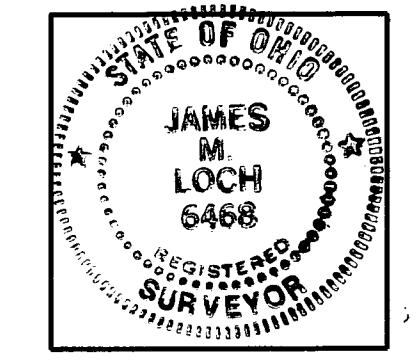
CENTERLINE MONUMENT ASSEMBLIES SHALL BE PLACED AT THE DIRECTION OF THE ENGINEER AND AT THE FOLLOWING LOCATIONS. ALL MONUMENT ASSEMBLIES SHALL BE LOCATED ON THE EXISTING CENTERLINE RIGHT-OF-WAY.

STATION	REMARKS
150+14.85	INTERSECTION C.H.606 & MUNN RD.
172+31.47	DEFLECTION POINT
192+51.51	DEFLECTION POINT
203+19.96	DEFLECTION POINT
207+03.02	DEFLECTION POINT
228+63.40	DEFLECTION POINT

LEGEND
 △ EXISTING MONUMENTS
 ■ PROPOSED MONUMENT ASSEMBLY:
 STD. DRAWING MC-1
 TOTAL: 6 MONUMENTS

BASIS FOR BEARINGS
 ALL BEARINGS SHOWN ARE FOR PROJECT USE ONLY. THESE BEARINGS ARE TO AN ASSUMED MERIDIAN AND ARE USED TO DELINEATE ANGLES ONLY.

I HEREBY CERTIFY THAT THIS PLAT IS A TRUE DELINEATION OF A SURVEY MADE FOR GEAUGA COUNTY IN 1991 BY FINKBEINER, PETTIS & STROUT LIMITED.
James M. Loch 12-27-93
 REGISTERED SURVEYOR DATE



RECORDERS STAMP
 RECEIVED May 11, 1994 4508.5
 RECORDED 9:11 A.M., 1994
 BOOK 21 PAGE 128
Catherine A. Heiden
 COUNTY RECORDER

21-128

CAD FILE: MUGPLAT
 DATE: 12/22/93
 OPERATOR: PLW/DFM