

SITE DATA

28.161 Ac. In Lots
2.293 Ac. In Road
30.454 Ac. Total In Phase #4

LENGTH OF ROAD

Weatherlop Lane 1764.27 Lin. Ft.
No. Of Sublots = 15

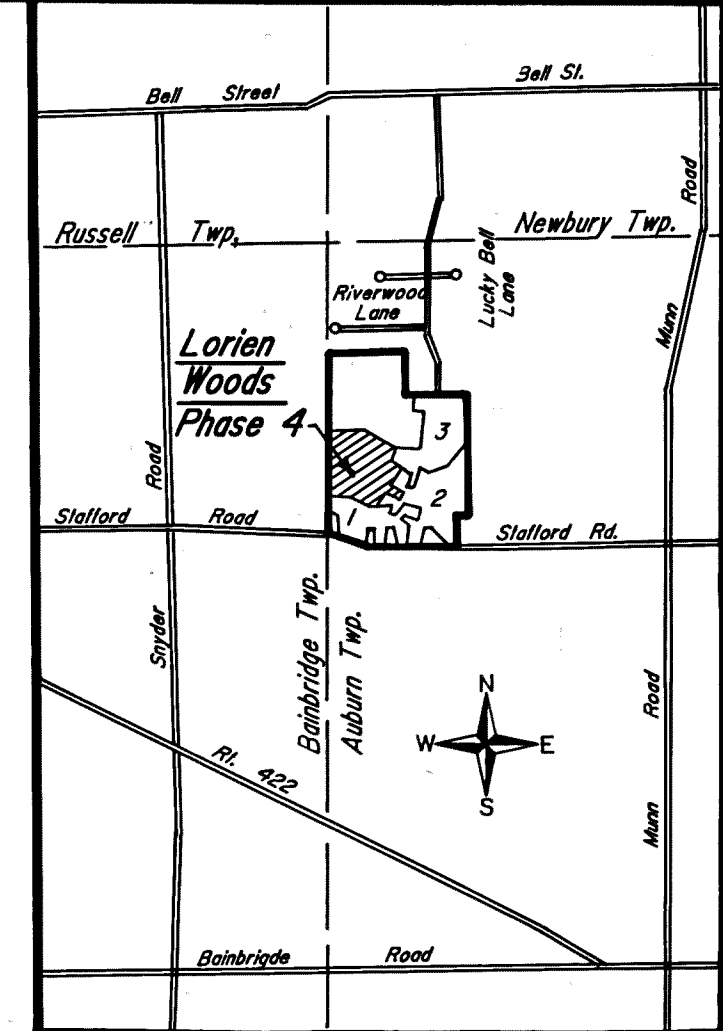
FINAL PLAT

LORIEN WOODS - PHASE NO. 4

SUBLOTS 46 THRU 60

Being Part Of Sections 1, Lot 2 Of Section 2, Tract One, Auburn Twp. Geauga Co., Ohio.
Being Part Of Four Parcels Of Land Containing 193.402 Ac. Conveyed To Lorien Woods,
Inc. In The Deed Records Vol. 802 Pg. 93, Vol. 802 Pg. 402, And Vol. 802 Pg. 404
Of The Geauga County Deed Records.

5
82



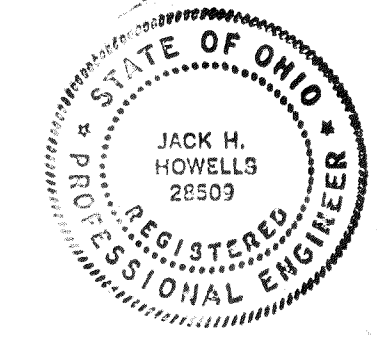
Vicinity Map
Scale: 1" = 3,500'

BENCH MARK
Sta. 39+72.39 - Lucky Bell Lane
Iron Pin In Monument Box
Elev. 1192.39

SURVEYOR'S CERTIFICATION

I, Do Hereby Certify That I Have Surveyed The Premises And Prepared The Attached Plat And The Dimensions Of The Lots And Road(s) Are In Feet And Decimal Parts Thereof, All Of Which Are Correct To The Best Of My Knowledge And Belief. Iron Monuments Or Pins Indicated Hereon Shall Be Set In Place Before Final Inspection And Acceptance Of The Improvements By The Geauga County Engineer.

Jack H. Howells 3/16/88
Jack H. Howells
Reg. Surveyor #5928
Reg. Engineer #28509



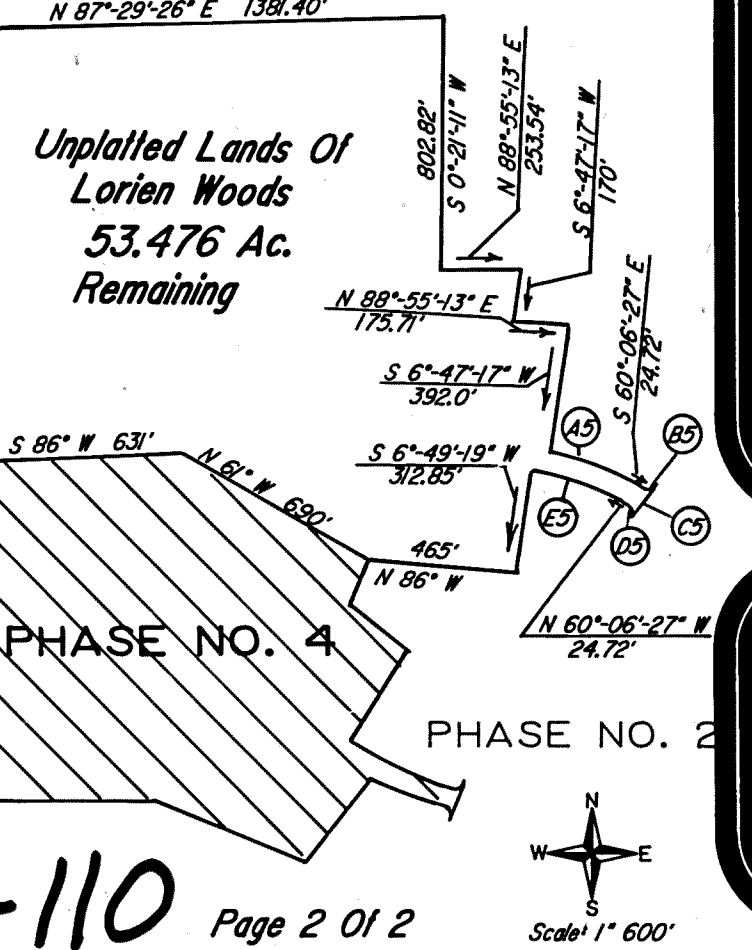
R. & S. Bohinski
Vol. 615 Pg. 610
R. & S. Collin
Vol. 613 Pg. 625

CURVE DATA TABLE

CURVE	RADIUS	ANGLE	TANGENT	LENGTH	CHORD LENGTH	CHORD BEARING
A	250.00'	43°-31'-20"	99.80'	189.90'	185.37'	S 63°-12'-40" E
B	40.00'	90°-00'-00"	40.00'	62.83'	56.57'	N 50°-01'-40" E
C	40.00'	90°-00'-00"	40.00'	62.83'	56.57'	N 39°-58'-22" W
D	310.00'	35°-13'-14"	98.40'	190.56'	187.58'	N 67°-21'-42" W
E	280.00'	43°-31'-20"	111.77'	212.69'	207.61'	S 63°-12'-40" E
F	310.00'	8°-18'-06"	22.50'	44.92'	44.88'	S 45°-36'-01" E
G	1340.00'	11°-35'-00"	135.92'	270.90'	270.44'	S 47°-14'-29" E
H	1370.00'	6°-51'-31"	82.10'	164.00'	163.90'	N 44°-52'-46" W
I	1370.00'	4°-43'-28"	56.52'	112.97'	112.94'	N 50°-40'-15" W
J	642.21'	29°-01'-00"	160.22'	314.03'	310.91'	S 67°-02'-29" E
K	672.21'	14°-44'-44"	86.98'	173.00'	172.52'	N 60°-24'-22" W
L	672.21'	9°-22'-33"	55.12'	110.00'	109.88'	N 72°-28'-01" W
M	672.21'	3°-53'-41"	22.86'	45.69'	45.69'	N 79°-06'-08" W
N	280.00'	17°-27'-06"	42.98'	85.28'	84.96'	N 89°-46'-33" W
O	250.00'	65°-39'-00"	161.27'	286.45'	271.04'	N 66°-07'-30" E
P	280.00'	20°-41'-33"	51.12'	101.12'	100.57'	S 71°-09'-07" W
Q	280.00'	17°-57'-06"	44.23'	87.73'	87.37'	S 51°-49'-49" W
R	280.00'	9°-33'-15"	23.40'	46.69'	46.64'	S 38°-04'-39" W
S	75.00'	249°-12'-40"	326.22'	123.46'	123.46'	S 88°-41'-43" W
T	75.00'	18°-59'-11"	12.54'	24.85'	24.74'	S 23°-48'-21" W
U	75.00'	48°-36'-29"	33.87'	63.63'	61.74'	S 9°-59'-24" E
V	75.00'	45°-50'-41"	31.71'	60.00'	58.41'	S 57°-12'-45" E
W	75.00'	72°-34'-28"	55.07'	95.00'	88.78'	N 63°-34'-53" E
X	75.00'	63°-12'-21"	46.15'	82.74'	78.60'	N 4°-18'-29" W
Y	40.00'	93°-24'-36"	42.45'	65.21'	58.23'	N 10°-47'-39" E
Z	220.00'	41°-27'-04"	83.24'	159.16'	155.71'	N 78°-13'-28" E
AA	612.21'	23°-37'-04"	128.00'	252.36'	250.57'	S 69°-14'-28" E
BB	612.21'	4°-23'-55"	23.51'	47.00'	46.99'	S 55°-13'-59" E
CC	130.00'	1°-55'-37"	22.03'	44.06'	44.06'	S 52°-04'-10" E
DD	130.00'	6°-35'-41"	75.47'	150.78'	150.70'	S 47°-48'-32" E
EE	130.00'	3°-03'-41"	35.01'	70.00'	69.99'	S 42°-58'-51" E

CURVE DATA TABLE (See To Right)

CURVE	RADIUS	ANGLE	TANGENT	LENGTH	CHORD LENGTH	CHORD BEARING
A5	960'	20°-37'-44"	174.71'	345.64'	343.70'	N 70°-25'-19" W
B5	10'	89°-49'-50"	47.53'	63.69'	61.21'	S 69°-50'-38" W
C5	450'	19°-39'-39"	77.97'	154.42'	153.66'	N 29°-53'-33" E
D5	40'	99°-49'-50"	47.53'	63.69'	61.21'	S 10°-11'-32" E
E5	900'	20°-35'-22"	163.47'	323.42'	321.68'	S 70°-24'-08" E



REVISIONS

DESIGNED BY: GTL
DRAWN BY: DL
TRACED BY: JHH
CHECKED BY: JHH
DATE: 3-7-88
FIELD BOOK: 263 & 266

LORIEN WOODS - PHASE NO. 4
Section 1, Lot 2 Of Section 2, Tract One
Auburn Township, Geauga County, Ohio

HOWELLS AND BAIRD, INC.
CIVIL ENGINEERS AND SURVEYORS
SALEM, OHIO
PH. 216-332-4834

