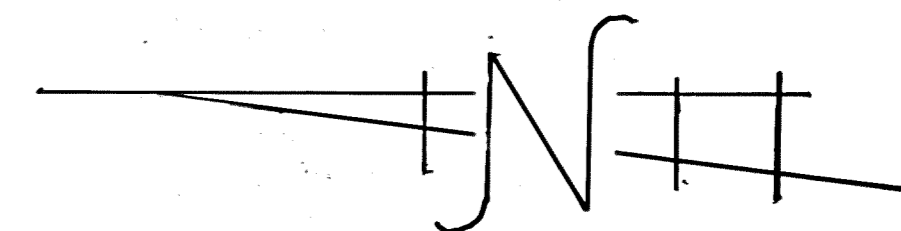
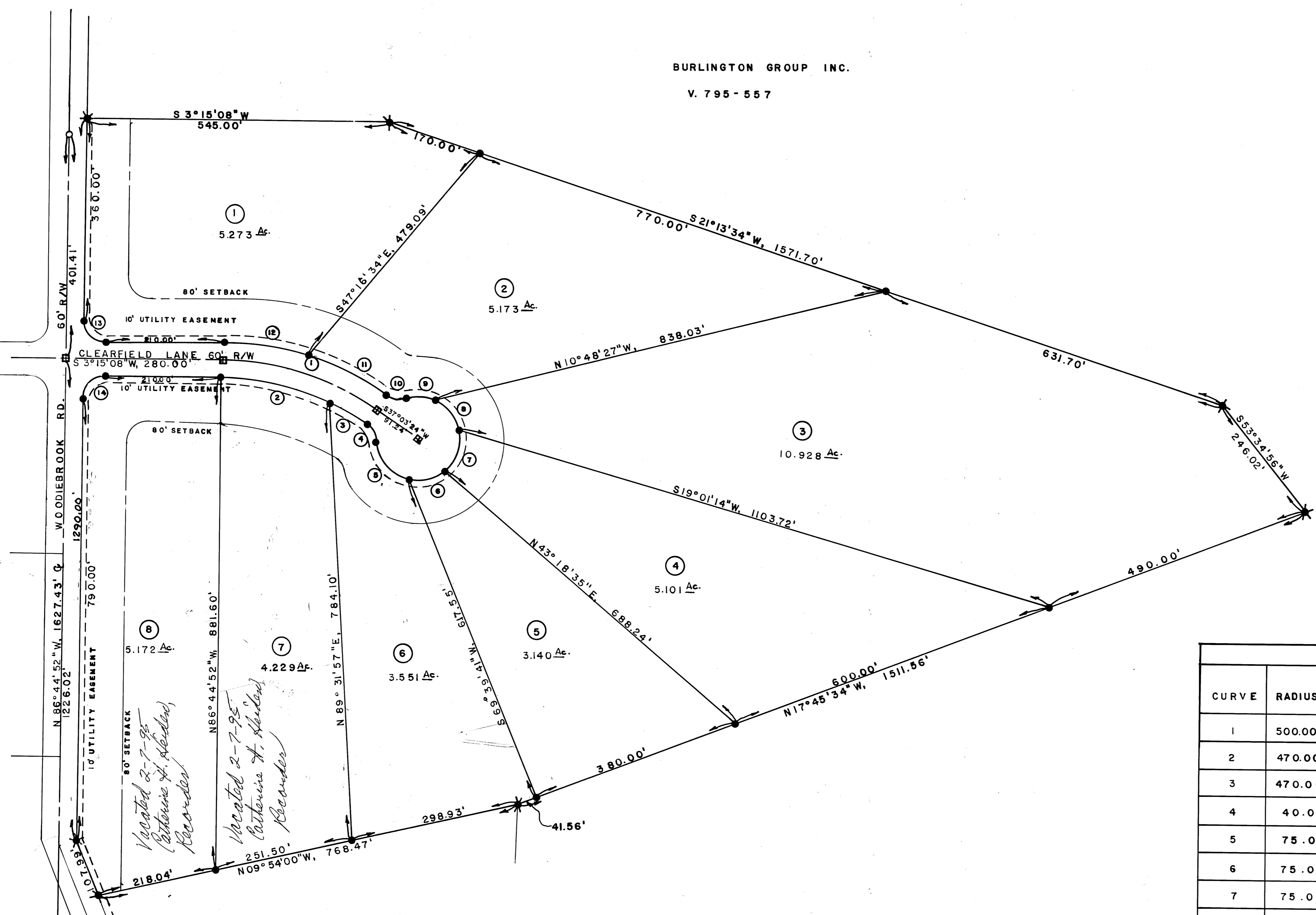


BURLINGTON GROUP INC.

V. 795 - 557



SCALE 1"=100'



*Created 2-7-95
Catherine H. Hardon
Recorder*

*Created 2-7-95
Catherine H. Hardon
Recorder*

BURLINGTON GROUP INC.

V. 795 - 557

LEGEND

- IRON PIN FOUND
- IRON PIN SET
- ⊞ MONUMENT SET
- ✱ IRON PIN SET IN CONCRETE
- ENCLOSES CURVE NUMBER - SEE 'CURVE DATA'

CURVE DATA						
CURVE	RADIUS	DELTA	TANGENT	ARC	CHORD	CHORD BEARING
1	500.00'	33°48'16"	151.93'	295.00'	290.74'	S 20°09'16"W
2	470.00'	24°22'57"	101.54'	200.01'	198.51'	S 15°26'36.5"W
3	470.00'	9°25'19"	38.73'	77.29'	77.20'	S 32°20'44.5"W
4	40.00'	52°30'17"	19.73'	36.66'	35.39'	S 63°18'32.5"W
5	75.00'	65°44'31"	48.47'	86.06'	81.41'	S 56°41'25.5"W
6	75.00'	61°06'56"	44.28'	80.00'	76.26'	S 6°44'18"E
7	75.00'	61°06'56"	44.28'	80.00'	76.26'	S 67°51'14"E
8	75.00'	61°06'56"	44.28'	80.00'	76.26'	N 51°01'50"E
9	75.00'	35°55'06"	24.32'	47.02'	46.25'	N 2°30'44.5"E
10	40.00'	52°30'17"	19.73'	36.66'	35.39'	N 10°48'15"E
11	530.00'	17°07'03"	79.77'	158.34'	157.76'	N 28°29'52.2"E
12	530.00'	16°41'13"	77.73'	154.36'	153.81'	N 11°35'42"E
13	40.00'	90°00'00"	40.00'	62.83'	56.57'	N 48°15'08"E
14	40.00'	90°00'00"	40.00'	62.83'	56.57'	N 41°44'52"W

BROOKMEADOW SUBDIVISION

21-77 PAGE 2 OF 2

PLAN HOLD CORPORATION • IRVINE, CALIFORNIA
 REGISTERED PROFESSIONAL LAND SURVEYOR
 LICENSE NO. 10000