

NELSON ALUMINUM FOUNDRY, INC.  
VOL. 775 PG. 1244  
3.552 AS-

PLAT VOL. 20, PG. 31  
BRIDGE CREEK COMMERCIAL CENTER CONDOMINIUM  
VOL. 876 PG. 1212

G. B. P. PROPERTIES  
V. 597 PG. 344  
V. 597 PG. 1163  
V. 682 PG. 797



NOTE:  
L.C.A. DENOTES "LIMITED COMMON AREA"  
ALL LAND NOT OCCUPIED BY THE BUILDING OR DESIGNATED AS "LIMITED COMMON AREA" IS "COMMON AREA"

**BRIDGE CREEK COMMERCIAL CENTER TWO CONDOMINIUM**

SITUATED IN THE TOWNSHIP OF AUBURN, COUNTY OF GEauga AND STATE OF OHIO AND KNOWN AS BEING PART OF ORIGINAL AUBURN TOWNSHIP LOT NO. 4 OF SECTION 3 IN TRACT ONE AND CONTAINING 1.506 ACRES OF LAND.

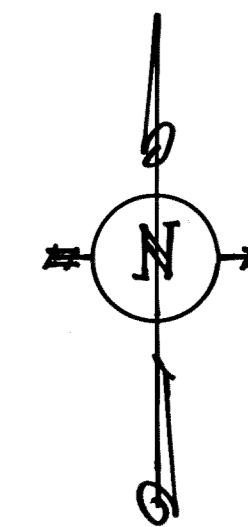
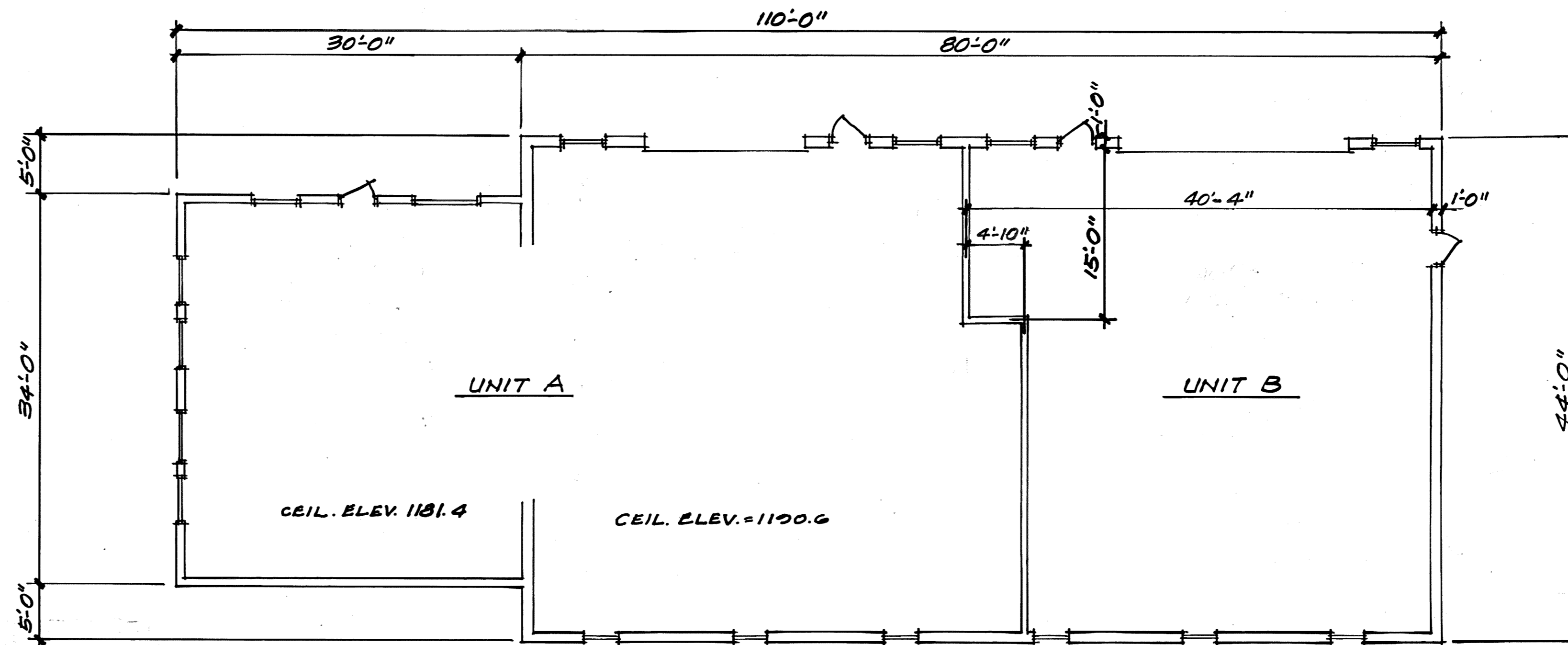
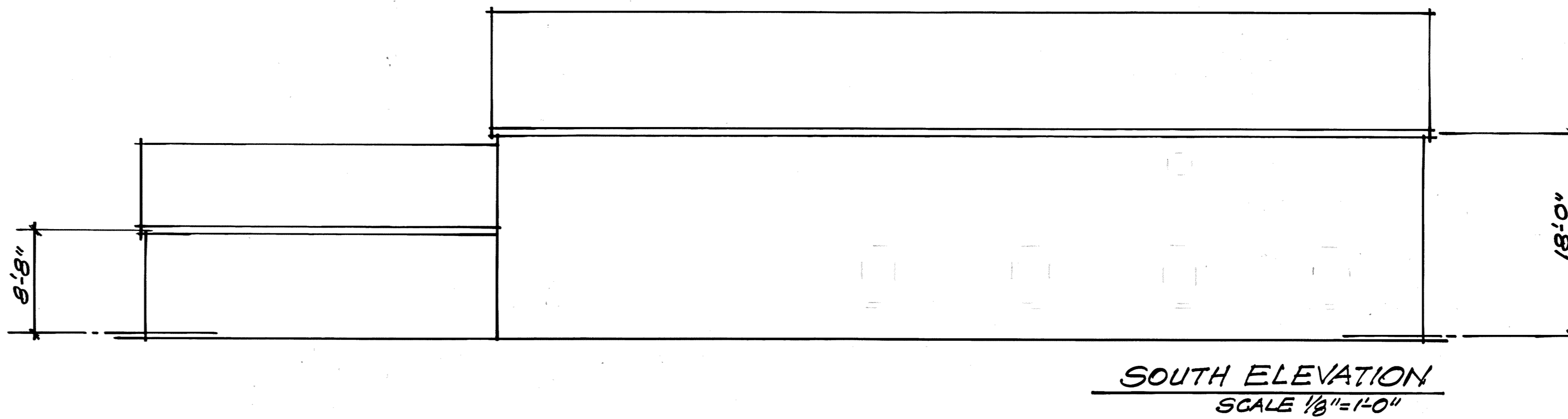
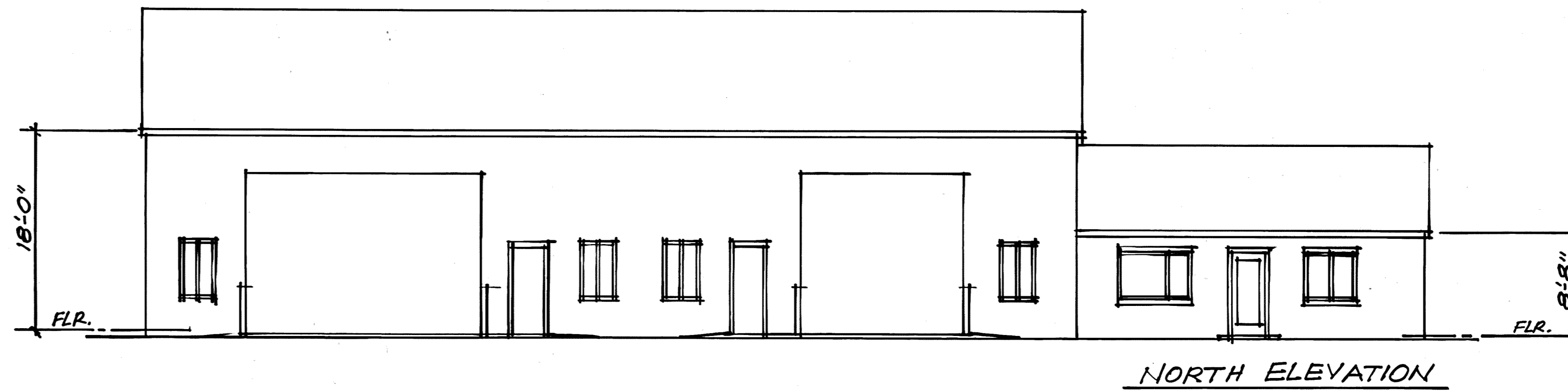
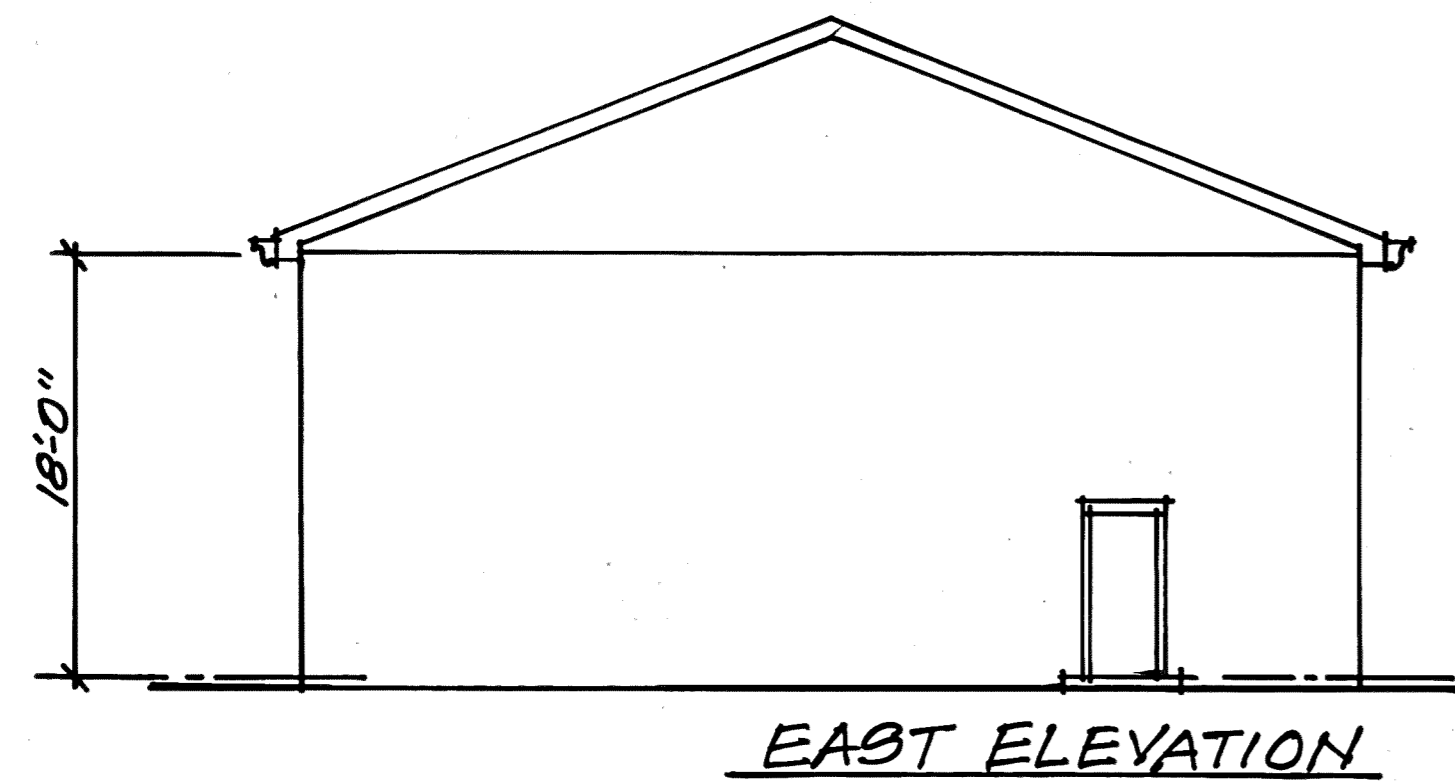
I HEREBY STATE THAT BUILDING ONE AND COMMON AREA OF BRIDGE CREEK COMMERCIAL CENTER TWO CONDOMINIUM ARE LOCATED AS SHOWN ON THIS DRAWING, SAID DRAWING ACCURATELY SHOWS THE BUILDING AS CONSTRUCTED TO THE BEST OF MY KNOWLEDGE AND BELIEF.

*Kevin S. Braun* 11-12-92  
KEVIN S. BRAUN REG. SURVEYOR # 7082



424125  
Received for Record this 31<sup>st</sup> day of December 1992  
Recorded this 31<sup>st</sup> day of December 1992 in Vol 21  
Page 17 of Geauga County Record of Plats.  
Catherine H. Heiden, Recorder

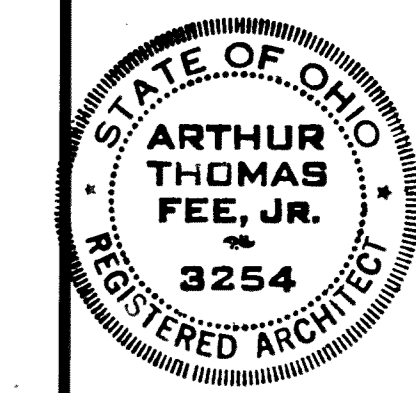
BRIDGE CREEK COMMERCIAL CENTER TWO CONDOMINIUM		
<b>BUILDING ONE LOCATION PLAT</b>		
SCALE: 1"=30'	NOV. 1992	SHEET 1 of 2
<b>BRAUN-PRENOSIL ASSOC. INC.</b> ENGINEERS-SURVEYORS CHAGRIN FALLS, O.		



UNIT	FLOOR ELEVATION	CEILING ELEVATION	SQ. FT.
A	1172.5	SEE PLAN ABOVE	2857
B	1172.5	1190.6	1683
TOTAL SQ. FT.			4540

**FLOOR PLAN**  
SCALE 1/8"=1'-0"

I DO HEREBY CERTIFY THIS DRAWING SHEET #2 OF 2 SHOWS GRAPHICALLY ALL PARTICULARS OF THIS BUILDING INCLUDING THE LAYOUT, LOCATION, DESIGNATION AND DIMENSIONS OF EACH UNIT AND BUILDING AS CONSTRUCTED.  
*Arthur Thomas Fee, Jr.*  
 ARTHUR THOMAS FEE JR. ARCHITECT



**FEE & ASSOCIATES ARCHITECTS**  
 4000 CRANE CENTRE DR.  
 STREETSBORO OH 44224  
 (616) 562-8066

BRIDGE CREEK COMMERCIAL CENTER TWO CONDOMINIUM  
**BUILDING ONE FLOOR PLAN**

SCALE 1/8"=1'-0"  
 DATE NOV. 1, 1992  
 SHEET #2 OF 2