

CENTER LINE SURVEY PLAT

U. S. ROUTE 422 SEC. (0.00)

GEAUGA COUNTY, OHIO

BAINBRIDGE TWP. R.9W, T.6N, O. L. 1 THRU 8

Received _____ 19____
 Recorded _____ 19____
 Book _____ Page _____
 County Recorder

FED. RD. DIVISION	STATE	PROJECT
2	OHIO	STATE

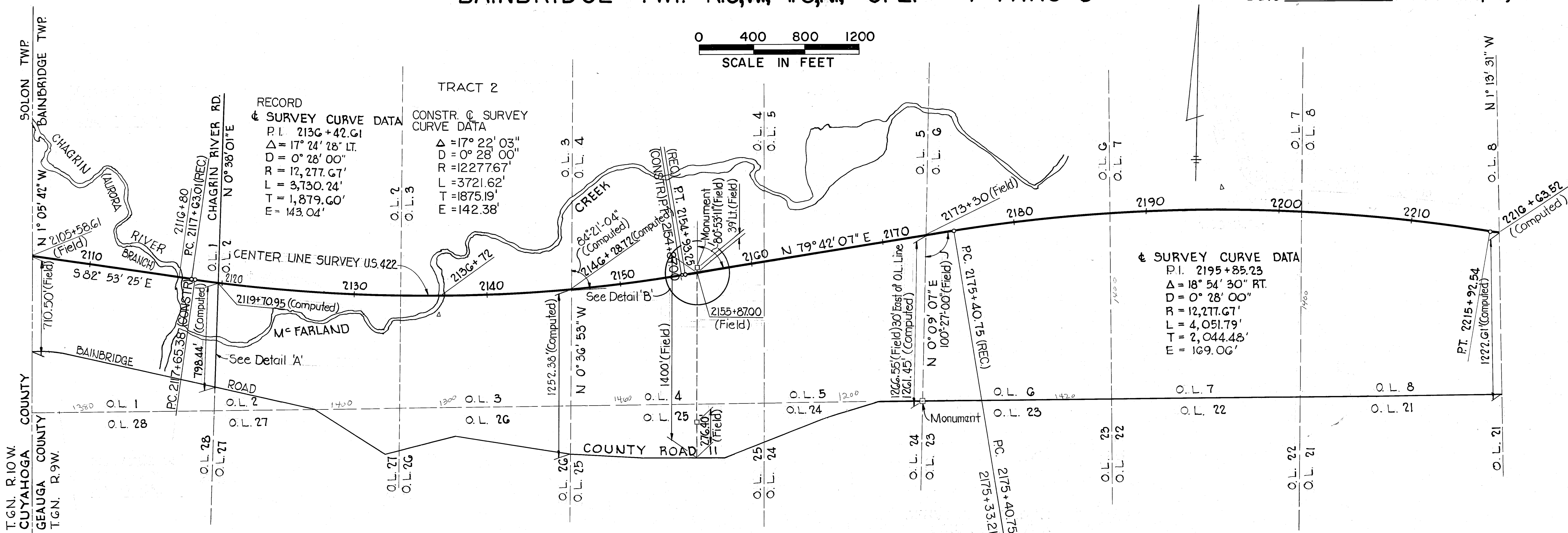
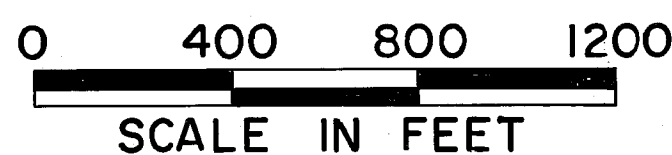
CUY. - 422 - (18.40)
 GEA. - 422 - (0.00)
 LIMITED ACCESS

287
321

2
36

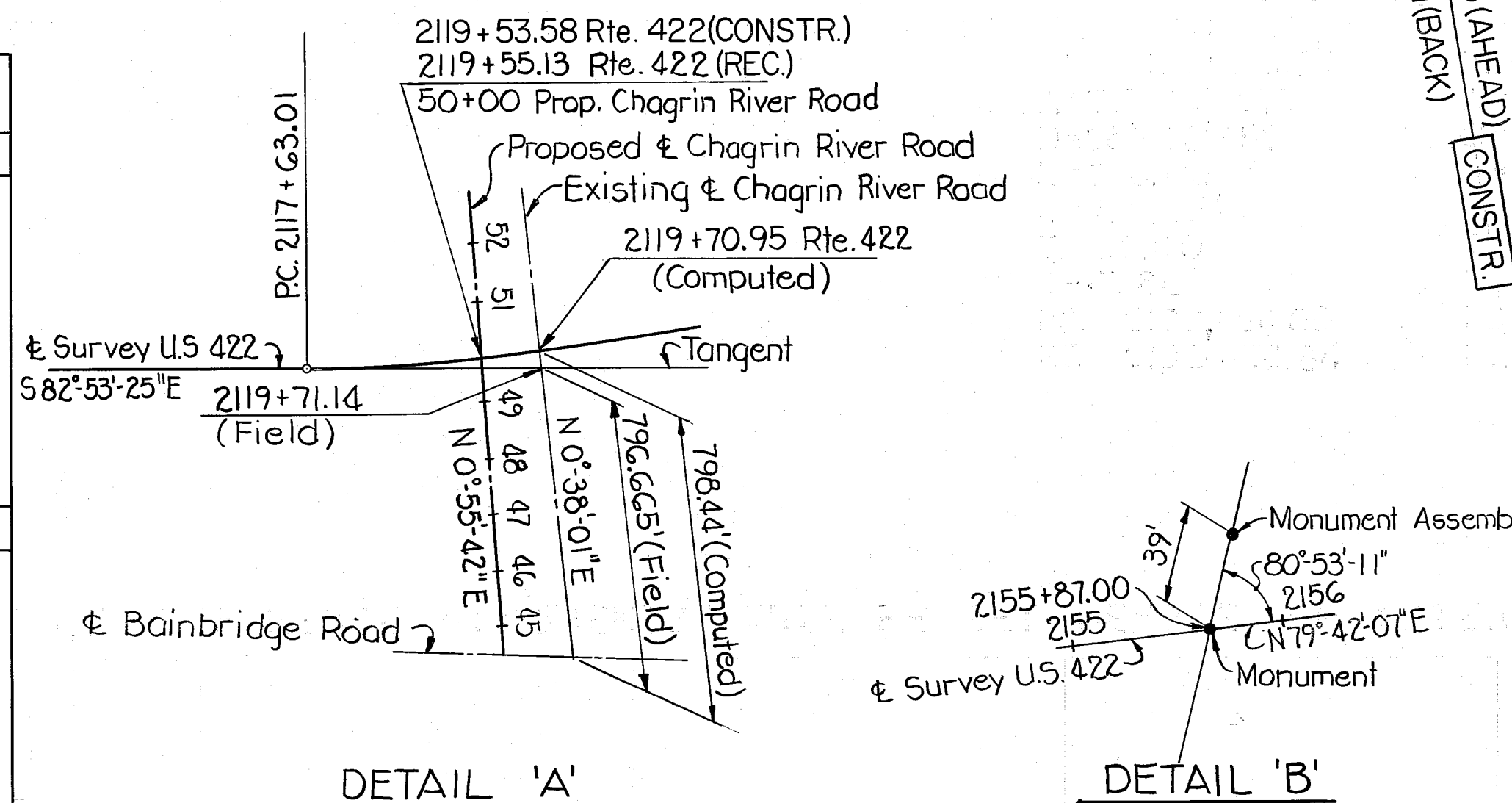
THIS IMPROVEMENT HAS BEEN DECLARED A LIMITED ACCESS HIGHWAY FROM STATION 2105+58.61 TO STATION 2216+63.52, BY ACTION OF THE DIRECTOR OF HIGHWAYS AND RECORDED IN VOLUME 47, PAGE 1269, OF THE DIRECTOR'S JOURNAL PURSUANT TO LAW.

Signed Joseph F. Powell
 Date 6-1-72 Division Deputy Director



Note: For Reference Monument & Monument Assembly Details see Center Line Plat 3 of 3

LOCATION OF MONUMENTS TO BE SET ON CENTERLINE DURING CONSTRUCTION			
U.S.R.# 422		S.R.# 306	SERVICE ROAD 'A'
2105+58.61	2192	PC. 143+01.60	PC. 7+24.50
2111+50	2198	149+97.27	PT. 13+24.50
PC. 2117+65.38	2204+15	154+59.27	PC. 15+74.50
2119	2210	PT. 158+10.89	PT. 22+74.50
2125	PT. 2215+92.54		23+24.50
	2222	BAINBRIDGE-CHAGRIN RELOCATION	
2131	2226+50		
2137	2229+46.20		
2143	2234+90		
2149	2241	WESTVIEW ROAD	
PT. 2154+87.00	2247		
2155+87.00	2250		
2161	2256		
2167	2262	SERVICE ROAD 'C'	
2171	2268		
PC. 2175+40.75	2274+18.29		
2180			
2186		CHAGRIN RIVER ROAD	



I HEREBY CERTIFY THAT THIS PLAT IS A TRUE DELINEATION OF A SURVEY MADE FOR THE OHIO DEPARTMENT OF HIGHWAYS IN 1966 BY John S. Haney DATE MARCH 5, 1966

SERVICE ROAD 'F' REMOVED BY DIVISION 12, STATE HIGHWAY DEPT., 5/31/72.

396279 Received for Record this 2nd day of April 1991 & Recorded in Vol. 26 Page 18 of Plats. Catherine H. Heiden, Geauga County Recorder

Note: Monuments to be set during or following construction and field checked for accuracy at the discretion of the Project Engineer. Centerline Reference Monuments to be placed on centerline U.S.R.# 422. Monument Assemblies to be placed on all other roads.

Page 1 Not received for record. Catherine H. Heiden, Recorder Center Line Plat 2 of 3

20-18

CENTER LINE SURVEY PLAT

U.S. ROUTE 422 SEC. (0.00)

GEAUGA COUNTY, OHIO

BAINBRIDGE TWP R.9,W, T.6,N, O.L. 9 THRU 12 & 19

Received	19
Recorded	19
Book	Page
County Recorder	

FED. RD. DIVISION	STATE	PROJECT
2	OHIO	STATE

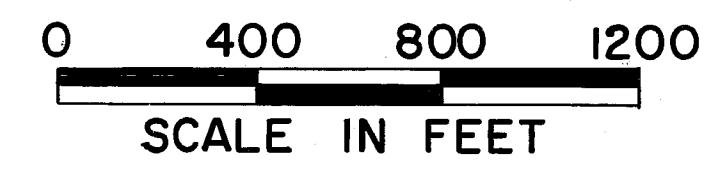
CUY. - 422-(18.40)
GEA. - 422-(0.00)
LIMITED ACCESS

188
321

3
36

THIS IMPROVEMENT HAS BEEN DECLARED A LIMITED ACCESS HIGHWAY FROM STATION 2216+63.52 TO STATION 2274+18.29, BY ACTION OF THE DIRECTOR OF HIGHWAYS AND RECORDED IN VOLUME 47, PAGE 1269, OF THE DIRECTOR'S JOURNAL PURSUANT TO LAW.

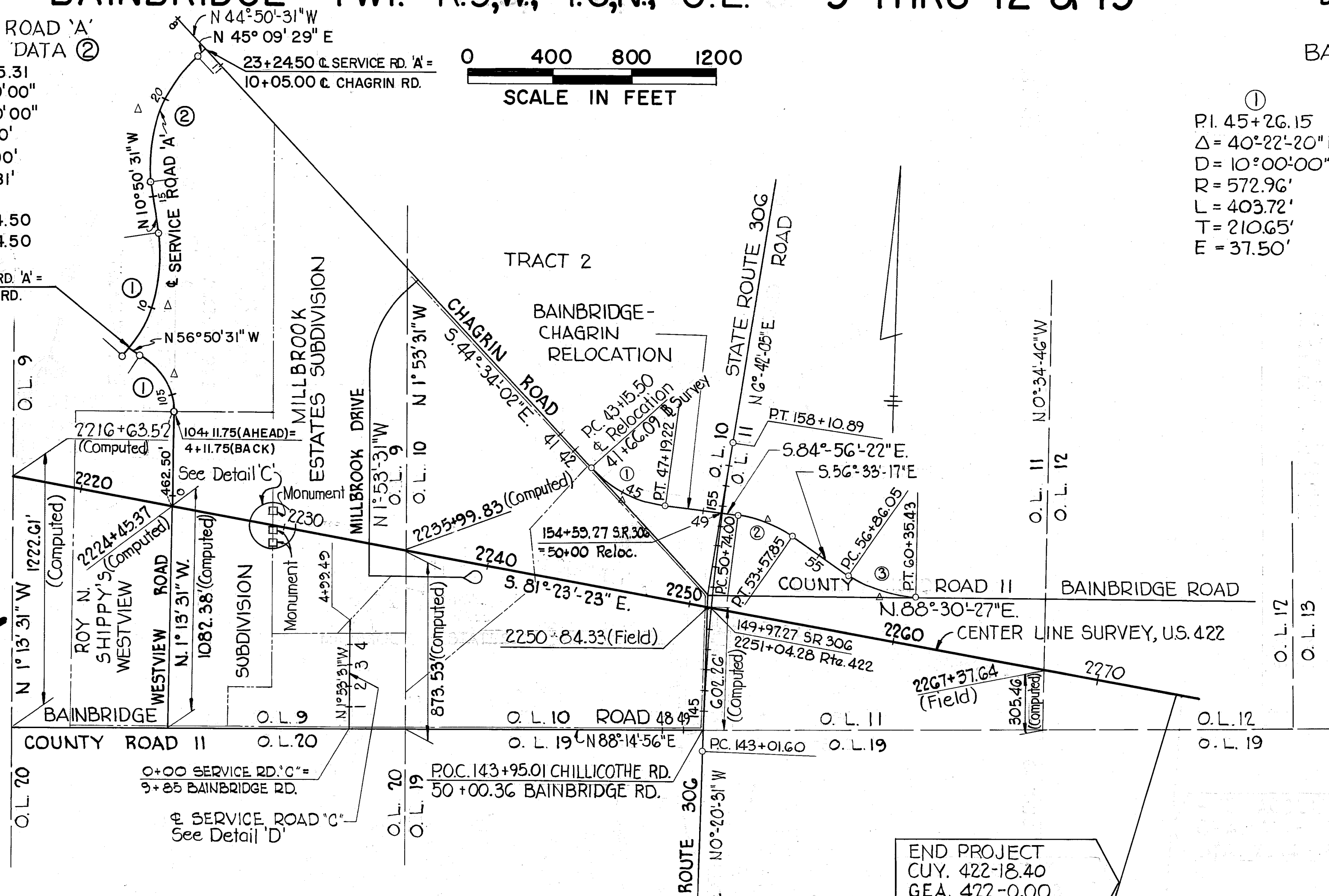
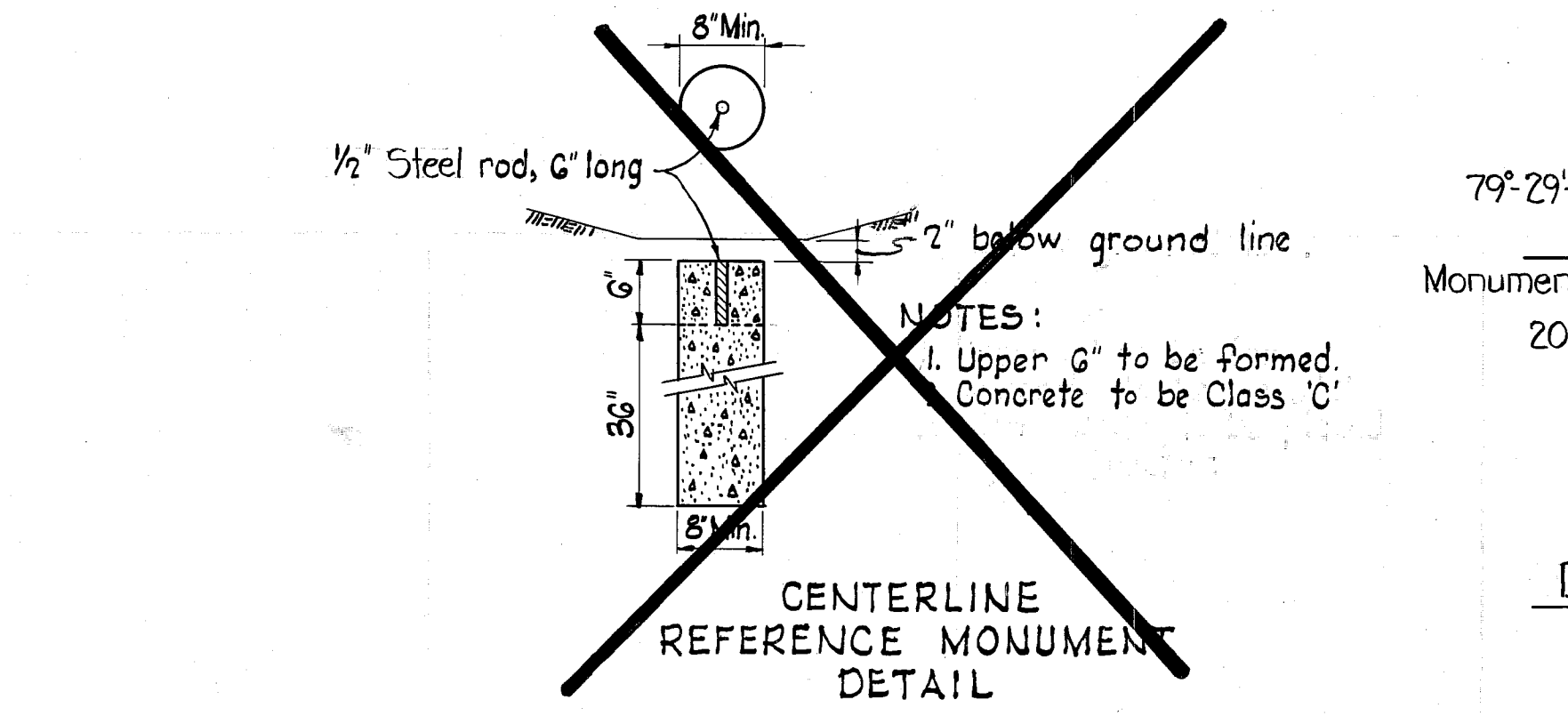
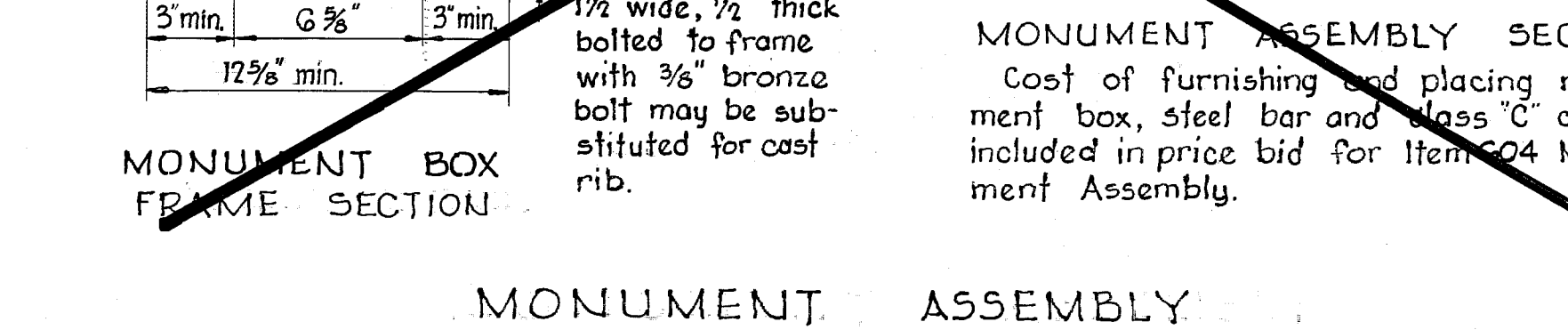
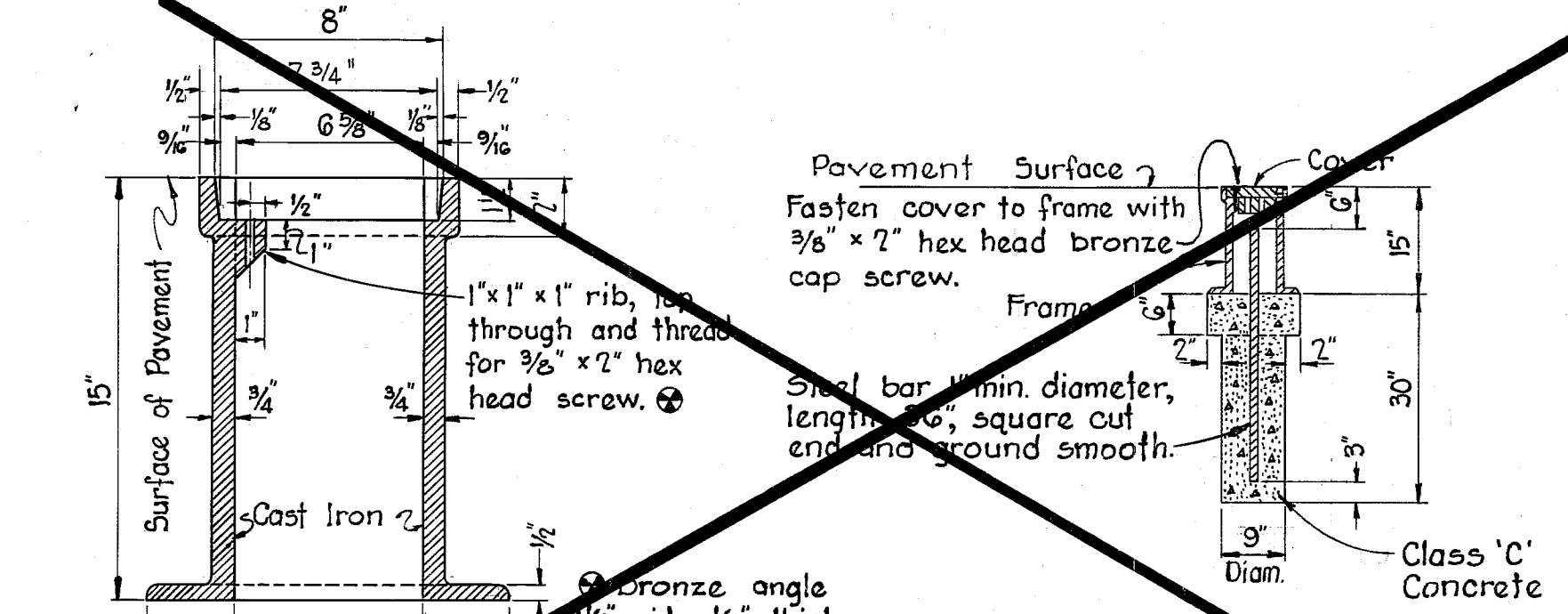
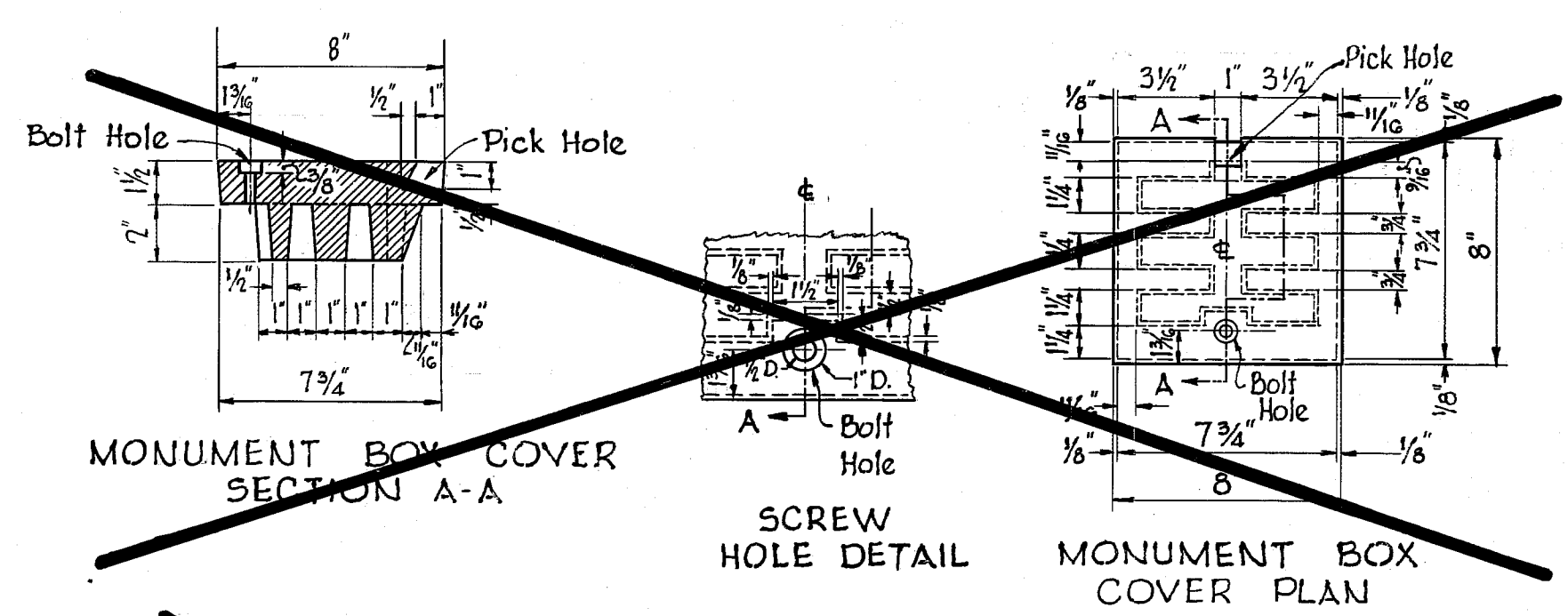
WESTVIEW ROAD & CURVE DATA ①	SERVICE ROAD 'A' & CURVE DATA ①	SERVICE ROAD 'A' & CURVE DATA ②
PI. 105+78.72 Δ = 55°37'00" D = 18°05'56" R = 316.57' L = 307.30' T = 166.97'	PI. 10+43.37 Δ = 48°00'00" D = 08°00'00" R = 716.20' L = 600.00' T = 318.87'	PI. 19+55.31 Δ = 56°00'00" D = 08°00'00" R = 716.20' L = 700.00' T = 380.81'
PC. 104+11.75 PT. 107+19.05	PC. 7+24.50 PT. 13+24.50	PC. 15+74.50 PT. 22+74.50



Signed Joseph F. Howell
Date 6-1-72 Division Deputy Director

BAINBRIDGE-CHAGRIN RELOCATION & SURVEY CURVE DATA

①	②	③
PI. 45+26.15 Δ = 40°22'20" Lt. D = 10°00'00" R = 572.96' L = 405.72' T = 210.65' E = 37.50'	PI. 52+18.90 Δ = 28°23'05" Rt. D = 10°00'00" R = 572.96' L = 283.85' T = 144.90' E = 18.04'	PI. 58+66.36 Δ = 34°56'16" Lt. D = 10°00'00" R = 572.96' L = 349.38' T = 180.31' E = 27.70'



CHILLICOTHE ROAD & CURVE DATA

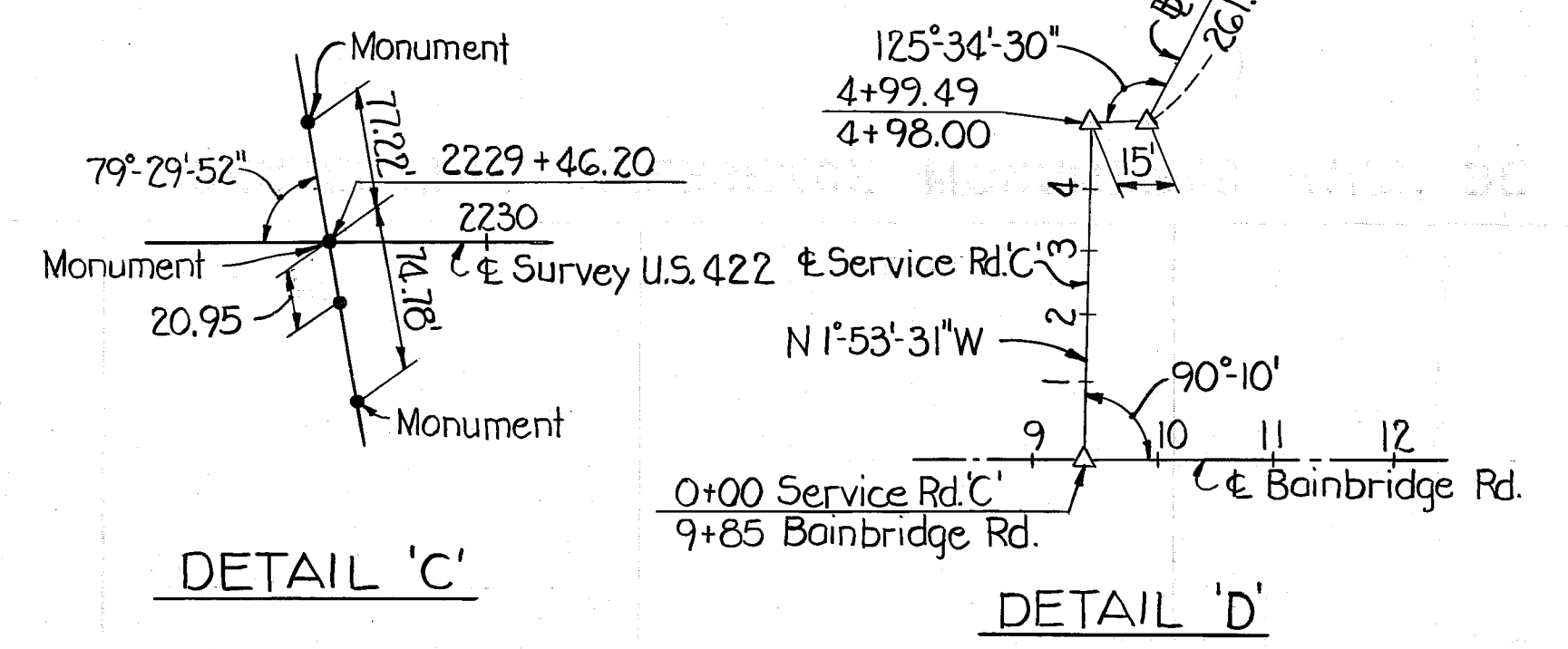
PI. 150+57.19 Δ = 07°02'36" Rt. D = 0°28'00" R = 12,277.67' L = 1509.79' T = 755.59' E = 23.23'

END PROJECT
CUY. 422-18.40
GEA. 422-0.00
STA. 2274+00.00

I HEREBY CERTIFY THAT THIS PLAT IS A TRUE DELINEATION OF A SURVEY MADE FOR THE OHIO DEPARTMENT OF HIGHWAYS IN 1966 BY

John S. Haney DATE MARCH 5, 1966

SERVICE ROAD 'F' REMOVED, SERVICE ROAD 'A' AND WESTVIEW ROAD REVISED BY DIVISION 12, STATE HIGHWAY DEPT., 5/31/72.



Not received for record
Catherine H. Kleidon, Recorder
Center Line Plat 3 of 3
20-19